

Manchester Area Cross Country League Match at Woodbank Park, Saturday 7th December 2024

Preliminary traffic and parking management proposals – to be finalised nearer the date.

It is anticipated that there is likely to be in excess of 1,000 runners at Woodbank Park during the day of 7th December, although not all at the same time. The race programme, while not confirmed yet, will probably follow the same pattern as previous years, as follows:

12:00 Under 11 girls and Under 11 boys

12:15 Under 13 girls and Under 13 boys

12:30 Under 15 girls and Under 15 boys

12:50 Under 17 girls and Under 17 boys

13:30 Under 20, Senior and Vet Women

14:30 Under 20, Senior and Vet Men

Competitors will be arriving from across the Greater Manchester and Cheshire areas. Many junior runners will come with family who will also be competing in the senior races, so could be there for the duration of the races. A majority of senior runners will arrive later, when the junior races have finished.

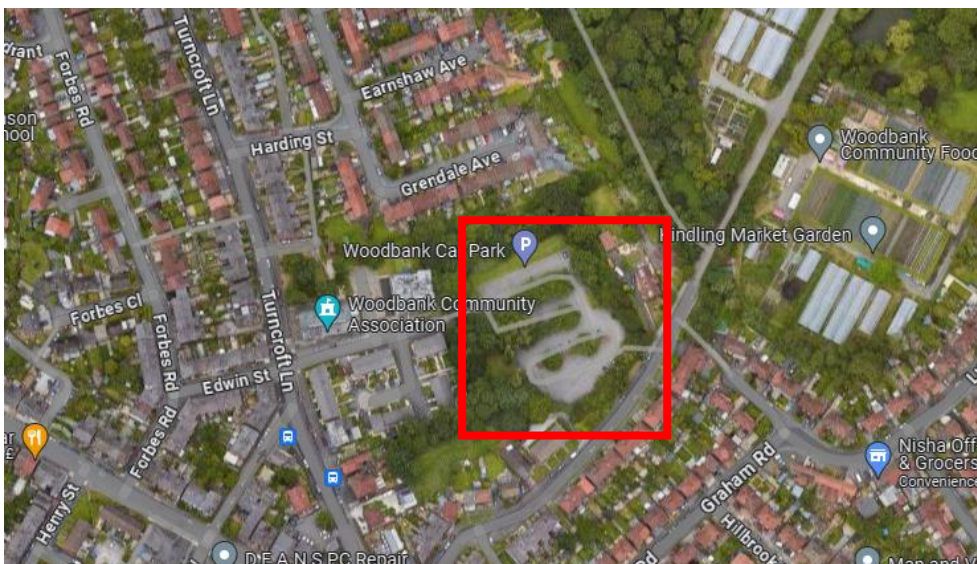
It is likely that there will be competitors arriving and leaving at the same time at certain points in the day.

Car Parking Areas

Four primary car parking areas have been identified and these will explicitly prioritised in pre-race information in preference to on-street parking, so as to reduce the impact on local residential streets. Car sharing will, of course, be encouraged, to minimise the numbers of vehicles needing to park.

The parking areas are as follows:

Woodbank Car Park



There is residential parking immediately outside the carpark entrance, and also parking for the Woodbank community centre. These will be strictly out of bounds for competitors and pre-race information on the MACCL website and social media will highlight this.

Area at the end of Curzon Road



Area off Fairway



In a conversation with Matthew Grant from the Estates and Asset Management Team, the areas off Curzon Road and off Fairway have been identified as council-owned land that can be made available

as car parking space on race day. Access to Woodbank Park from these two sites would be via Woodlands Park, along Fred Perry Way, a maximum walking distance of around 1km to race HQ

Vernon Park Car Park



It is believed that between these four sites there will be at least 300 parking spaces within a suitable walking distance for athletes.

Proposed parking plan

Woodbank Carpark is obviously the most convenient site and for those bringing club gazebos and tents before the event, Woodbank offers the only fully tarmac route to race HQ. With the exception of race organisers, timers and 1st Aid, there will be no traffic access into Woodbank Park.

Competitors arriving earlier in the day will be directed to Woodbank Car Park. There will be marshals in the carpark ensuring that drivers park tightly and sensibly and to direct the flow of traffic at the squeeze-point at the entrance. At the point the carpark is full, a marshal will be positioned at the corner of Little Moor Lane and Turncroft Lane, advising drivers that the carpark is full and to seek one of the alternative parking options which will have been made clear before the event.

Prior to the event, athletes will be advised that the main car park is likely to fill up and that they should familiarise themselves with how to get to the alternative parking sites before they set off on their journey.

There will be marshals at the sites off Curzon Road and off Fairway to direct cars and also give directions to athletes. Stockport Harriers propose to put out signs / tape where necessary to direct walkers to race HQ. All signage will be removed at the end of the day.