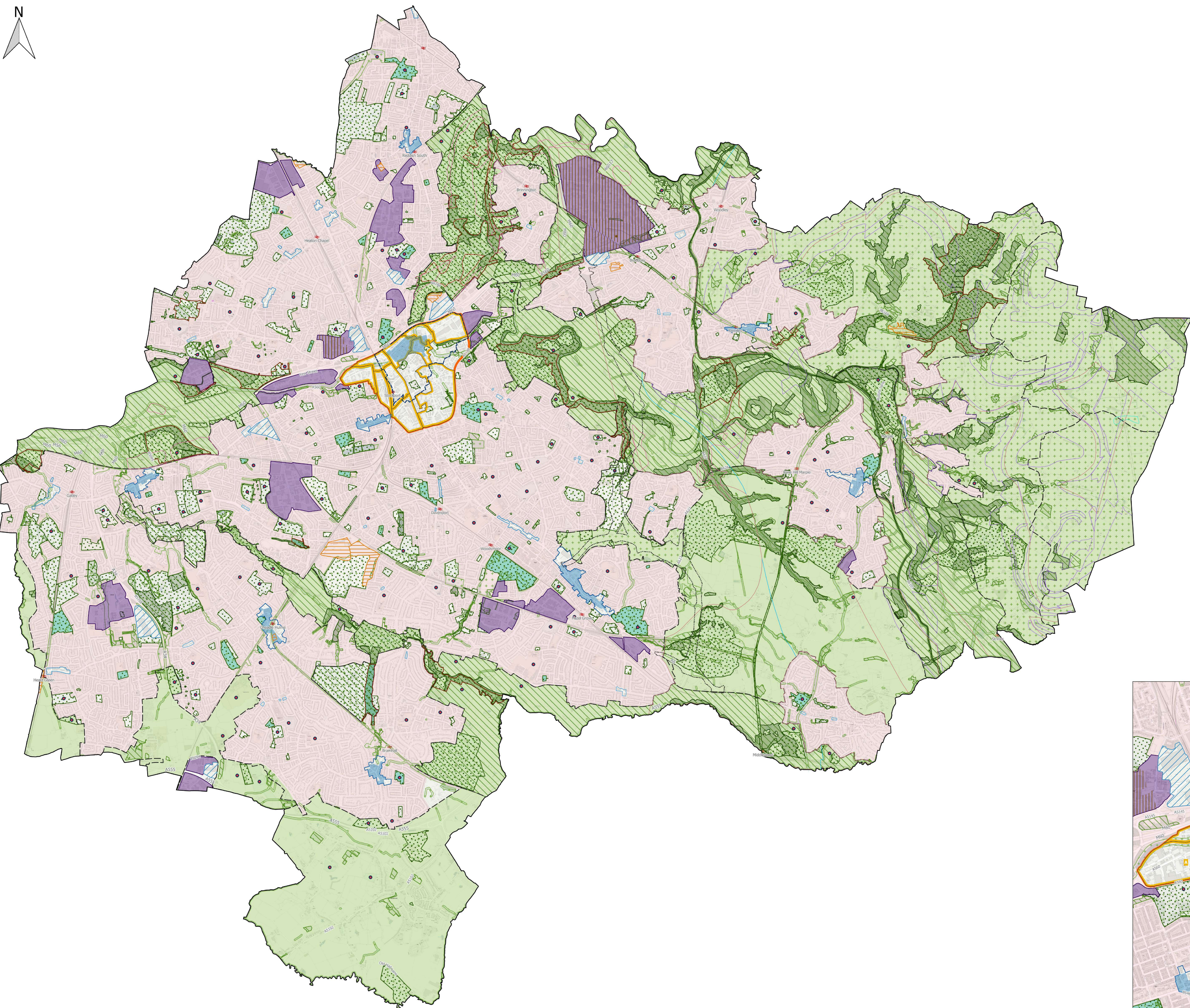


Draft updated policies map

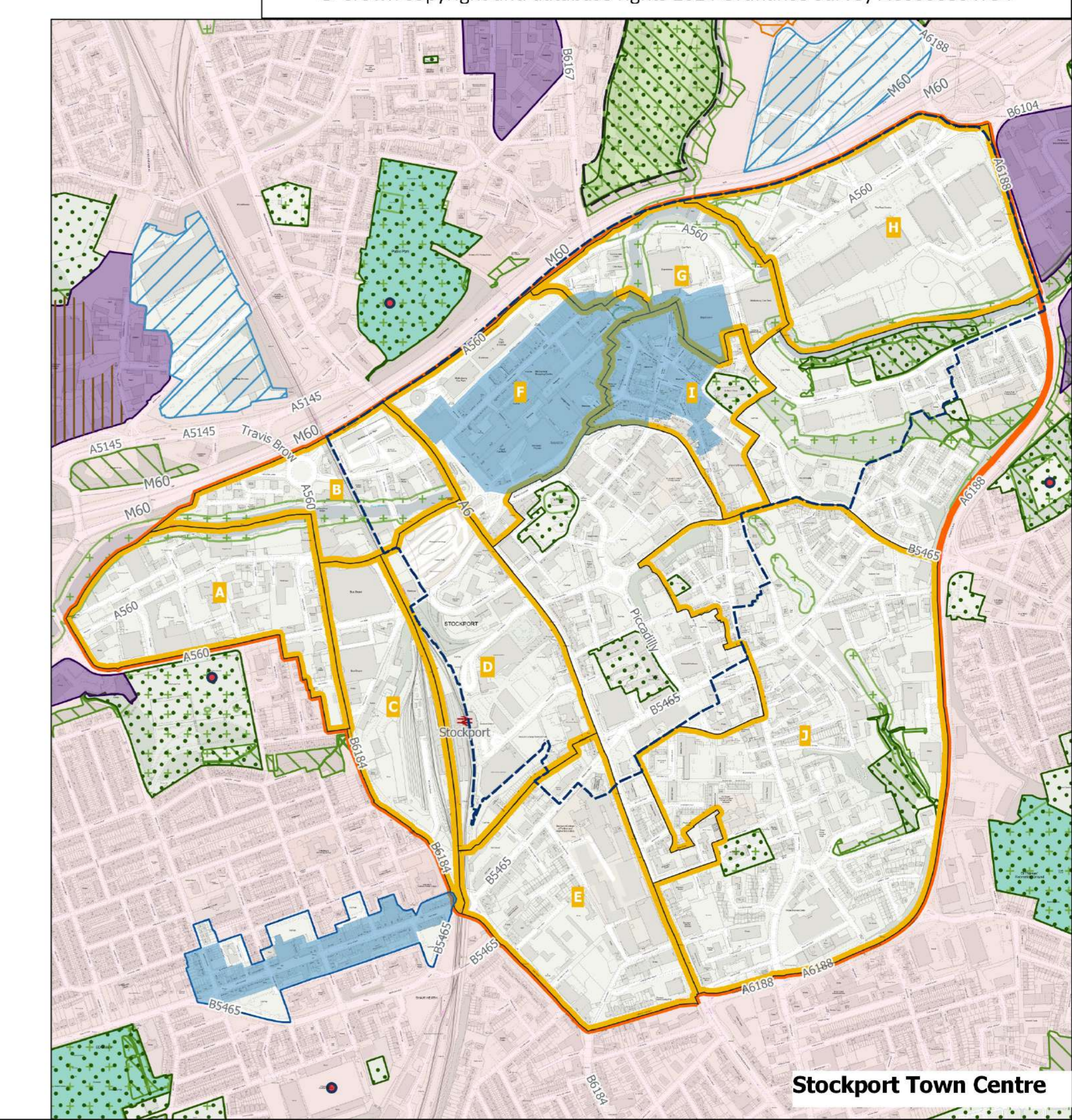


- Landscape Character Area (ENV 6)
 - A6 to M60 Protected Corridor (INF 16)
 - Primary Shopping Area (STC 5, STC 8, CEN 1, CEN 2, CEN 4)
 - Main Town Centre Use Area (STC 8, CEN 2, CEN 4)
 - District Centre (CEN 1 - CEN 7)
 - Large Local Centre (CEN 1, CEN 2, CEN 4 - CEN 7)
 - Other Local Centre (CEN 1, CEN 2, CEN 4 - CEN 7)
 - Out of Centre Locations for Retail (CEN 8)
 - Town Centre Policy Area (STC 2)
 - Town Centre Living Area (ENV 19, HOM 5, STC 5)
 - Housing Allocation (HOM 2)
 - Employment Area (BUS 1, BUS 2, BUS 3)
 - Site of Special Scientific Interest (ENV 3)
 - Site of Biological Importance/Regionally Important Geological Site (ENV 3)
 - Ecological Networks - Linear Corridor (ENV 1, ENV 2, ENV 3)
 - Ecological Networks - Core Area (ENV 1, ENV 2, ENV 3)
 - Local Nature Reserve (ENV 3)
 - Open Space (COM 4)
 - Local Green Space (COM 5)
 - Playing Pitch identified in Playing Pitch Strategy (COM 6)
 - Green Belt (Strategic Policy 1, HOM 14, HOM 15)
 - Predominantly Residential Area (HOM 1)
- Greater Manchester Joint Waste Development Plan**
- Area
 - Site
- Greater Manchester Joint Minerals Development Plan**
- Sand - Area of Search
 - Sandstone - Area of Search
 - Brickclay - Minerals Safeguarding Area
 - Coal - Minerals Safeguarding Area
 - Sand and Gravel - Minerals Safeguarding Area
 - Sandstone - Minerals Safeguarding Area

Map produced by Business Intelligence

Task Ref: BID1-838-Reg18 Scale: 1:17500 Date: 09/07/2024

© Crown copyright and database rights 2024 Ordnance Survey AC0000804794



Stockport Town Centre