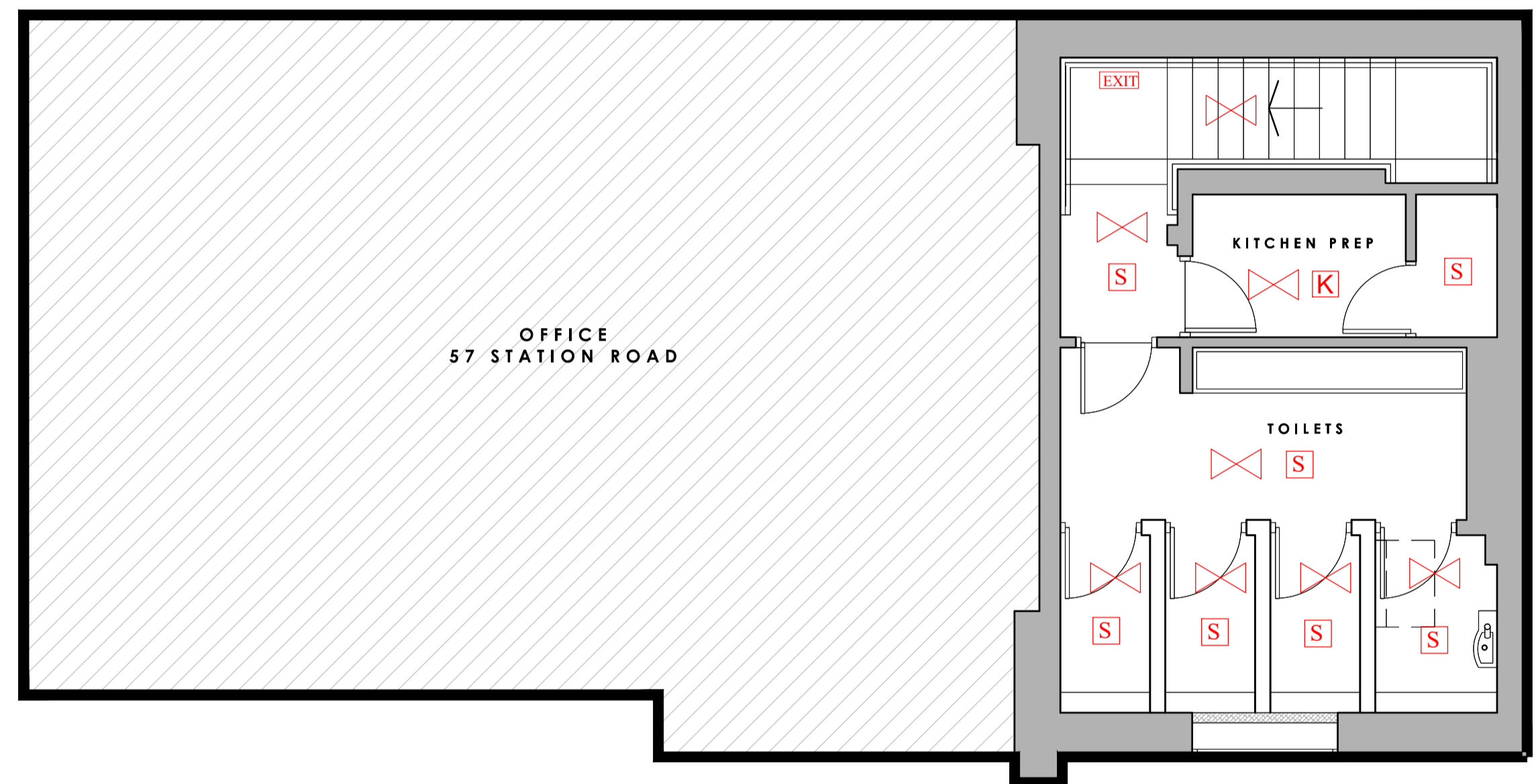
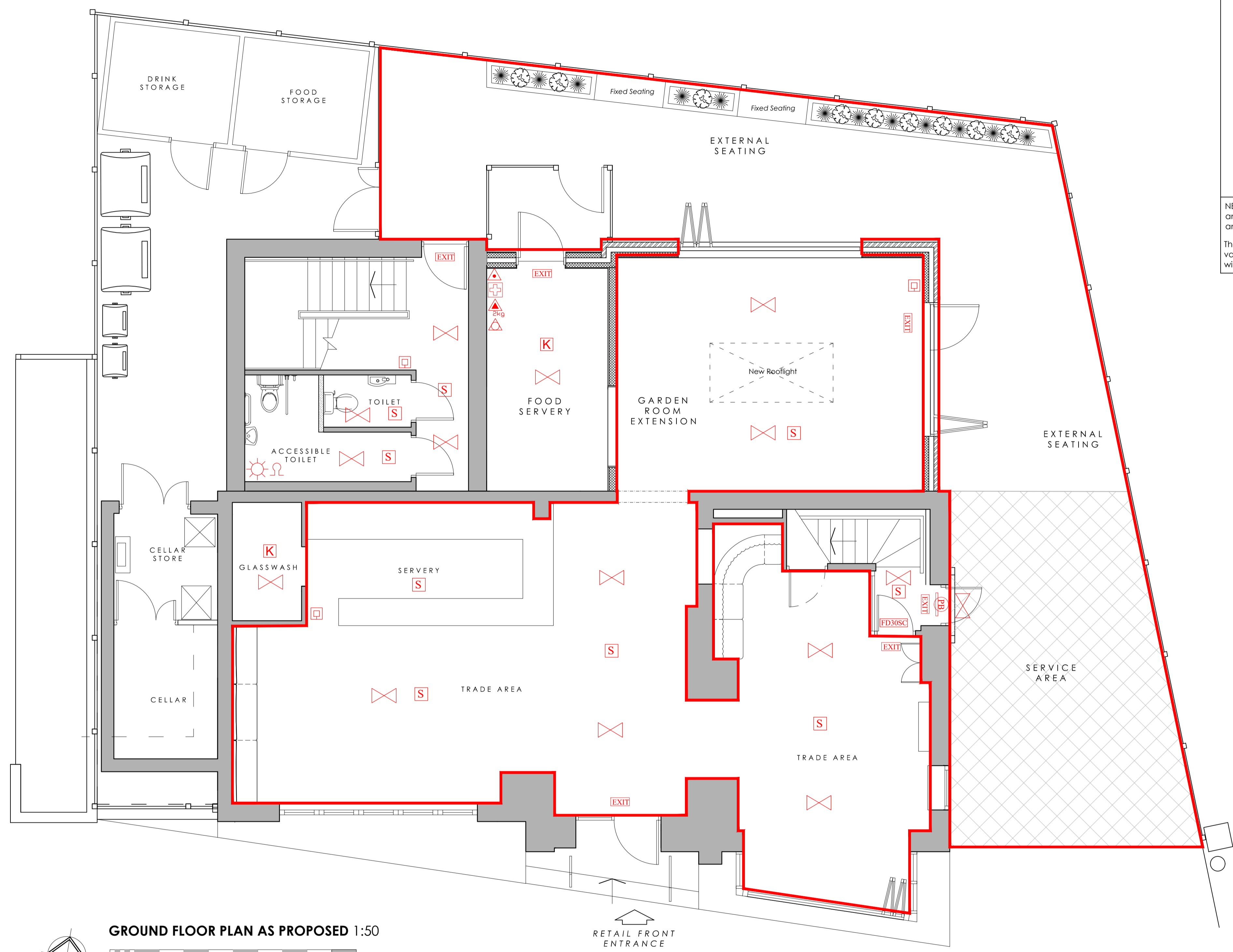


KEY:-

Licensed area	Red - NEW equipment (where shown as altered)	Fire alarm panel	Foam Fire Extinguisher
Illuminated Exit Sign	Half hr Fire res s/c door with s/ seal	Water Fire Extinguisher	Fire Blanket
Emergency Lighting Luminaire	Fire door keep shut	Dry Powder Fire Extinguisher	Carbon Dioxide Fire Extinguisher
Fire Alarm Sounder	Fire door keep locked	Wet Chemical (Fat Fighter) Fire Extinguisher	
Combined Smoke Detector / Sounder	Fire Escape Keep clear		
Smoke Detector	Push Bar opening device		
Heat Detector			
Break Glass Call Point			

NB. All signs and notices are to be provided and fixed by the General Contractor. All emergency exit signs and emergency luminaires are to be provided and fixed by the Electrical Contractor, wired to the Fire Alarm and controls as appropriate: this includes controls, battery packs, etc.

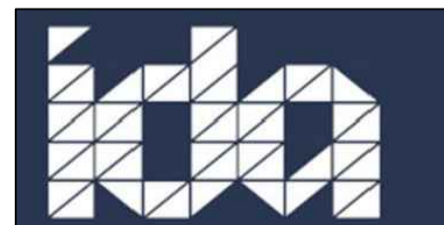
The current location of fire safety equipment and other equipment is shown, these may be subject to variation / movement in the future as necessary and where applicable change will be done in consultation with the fire officer.



GROUND FLOOR PLAN AS PROPOSED 1:50



FIRST FLOOR PLAN AS PROPOSED 1:50



Rev	Description	By	Date
A	Drawing updated.	MBG	28-3-24

INVENTIVE DESIGN ASSOCIATES
ARCHITECTURE & INTERIOR DESIGN

57 Station Road, Cheadle Hulme
Stockport, Greater Manchester SK8 7AA
Company Reg No: 9251414

INVENTORY
59-61 Station Road
Cheadle Hulme, Stockport, SK8 7AA
LICENSING PLAN AS PROPOSED

0161 428 0310
office@inventiveda.com
www.inventiveda.com
@inventiveda

DRAWN	MBG	DATE	19-3-24	DRAWING NO.	
SCALE	1:50@A1	REV.	A		2355-501