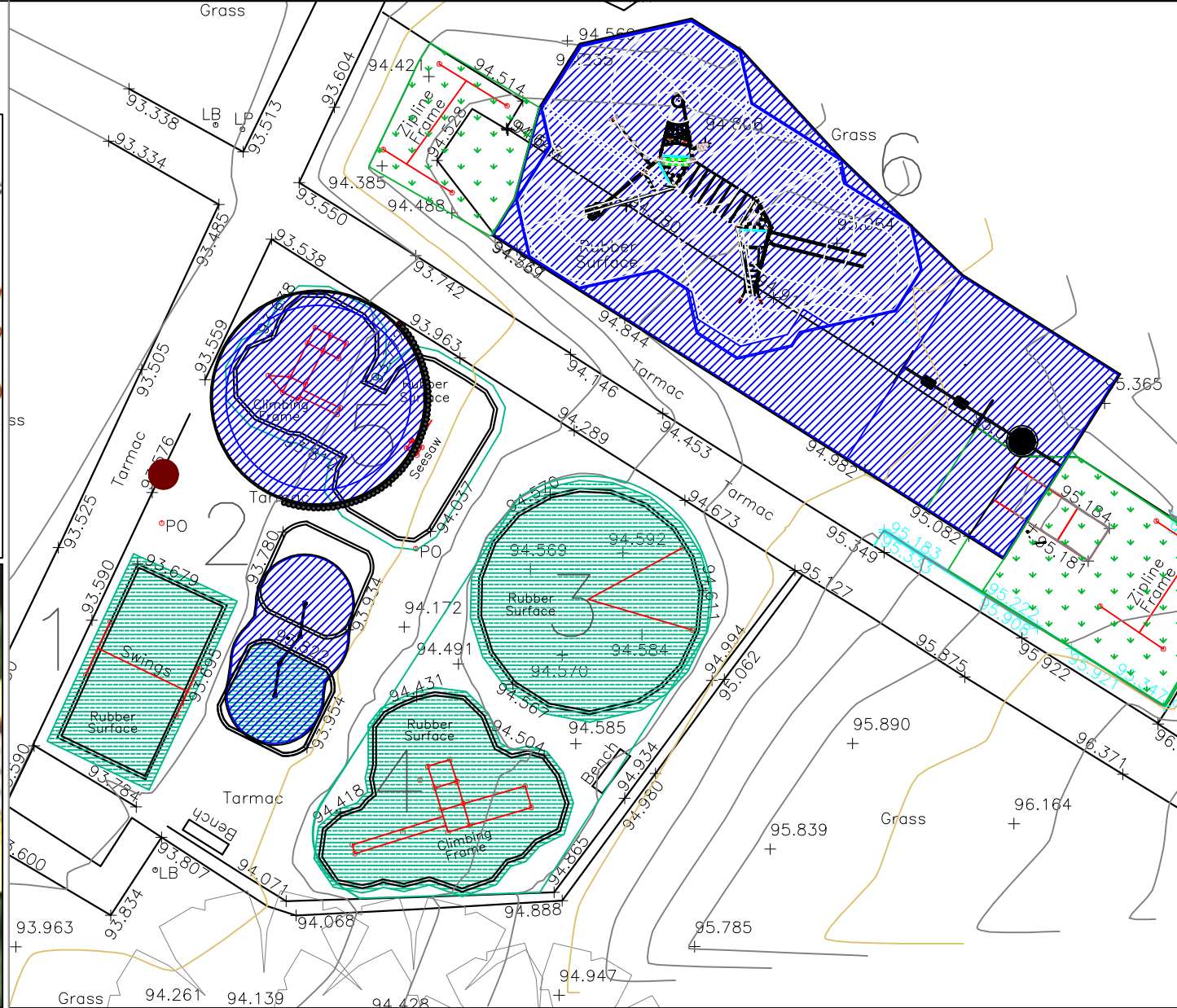
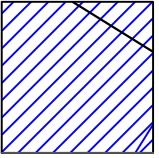


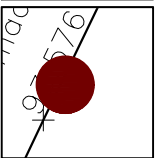



This map is reproduced from Ordnance Survey material with the permission of Ordnance Survey on behalf of the Controller of Her Majesty's Stationery Office © Crown copyright. Unauthorised reproduction infringes Crown copyright and may lead to prosecution or civil proceedings. Stockport Metropolitan Borough Council 100019571 2023



-  Rubber Safer Surface
-  Synthetic Carpet Overlay (by others)
-  Return to grass
-  Relocated entrance

- 1 Toddler swings retain with safer surface improvements
- 2 New somersault bars
- 3 Cantilever swing retain with safer surface improvements
- 4 Climbing frame refurbish and safer surface improvements
- 5 New accessible roundabout
- 6 Redundant cable way replaced with new challenging climbing frame and with option for a double bay seat with inclusive nest seat and mirage seat.



STOCKPORT
METROPOLITAN BOROUGH COUNCIL
HIGHWAYS AND TRANSPORTATION
STOPFORD HOUSE
STOCKPORT SK1 3XE

MARK GLYNN
DIRECTOR OF PLACE MANAGEMENT

AMENDMENTS				
DRAWN	CHECKED	DATE	No	AMENDMENT

JOB TITLE
GOYT VALLEY ROAD, PLAY AREA

DRAWING TITLE
FINAL_LAYOUT

Drawn JB	Engineer	Checked TW	Approved TW
Date 04/01/2024	Date	Date 04/01/2024	Date 04/01/2024
Scale 1:200 @ A3			
Drawing No. S1934_GV			Revision