

MANUFACTURER  
**CC Grass**  
 Head Office  
 Alltime Sport & Leisure GmbH  
 Hugo-Eckener-Ring  
 60549 Frankfurt am Main

CONTRACTOR  
**PST SPORT**  
 Head Office  
 Monvalley Business Park  
 Tralee  
 Co Kerry

**GENERAL NOTES:**  
 1 - Do not scale, except for planning purposes.

**LEGEND**

- LAND AREA UNDER LEASEHOLD OWNERSHIP OF THE SCHOOL
- 3G FOOTBALL TURF PITCH (3G FTP)

REV	DESCRIPTION	BY	CHK	DATE
05	AMENDMENTS		LF	04.08.23
04	AMENDMENTS		LF	18.07.23
03	COMMENTS FROM 02/03/23		LF	05.05.23
02	PITCH AND CARPARK LAYOUT		LF	30.03.23
01	PITCH AND CARPARK LAYOUT		LF	13.03.23

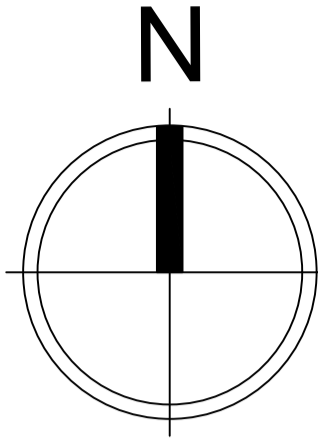


AUTHOR  
**Livia Ferraz**

TITLE  
**Stockport School  
 Location Plan**

PROJECT CCG/23/011/03	SCALE 1:1250	SIZE <b>A3</b>
--------------------------	-----------------	-------------------

DRAWING No <b>03</b>	REVISION <b>05</b>
-------------------------	-----------------------



MANUFACTURER	CONTRACTOR
CC Grass Head Office Alltime Sport & Leisure GmbH Hugo-Eckener-Ring 60549 Frankfurt am Main	PST SPORT Head Office Monvalley Business Park Tralee Co Kerry

**GENERAL NOTES:**

1 - Do not scale, except for planning purposes.

**LEGEND**

	PROPOSED RETAINING WALL
	RAIL FENCE
	4.5M HIGH REBOUND FENCE
	4.5M HIGH FENCE
	1.2M HIGH SPECTATOR FENCE
	SYNTHETIC GRASS
	PROPOSED TARMAC
	PROPOSED POROUS GRASSCRETE
	PROPOSED STORAGE CONTAINER
	PROPOSED NEW POROUS MACADAM CAR PARKING

11	GATES ACCESS	LF	10.11.23
10	PROPOSED TREES	LF	01.11.23
09	COMMENTS FROM 09.10.23	LF	11.10.23
08	SCALE BAR	LF	08.09.23
07	AMENDMENTS	LF	18.07.23
06	EXISTING LINE MARKINGS	LF	23.06.23
05	NOTES OF TARMAC AREA	LF	02.06.23
04	COMMENTS FROM 02.03.23	LF	05.05.23
03	CARPARK LAYOUT	LF	24.04.23
02	PITCH AND CARPARK LAYOUT	LF	30.03.23
01	PITCH AND CARPARK LAYOUT	LF	13.03.23
REV	DESCRIPTION	BY	CHK DATE



AUTHOR  
**Livia Ferraz**

TITLE  
**Stockport School  
Proposed Site Plan**

PROJECT CCG/23/011/02	SCALE 1:500	SIZE <b>A1</b>
--------------------------	----------------	-------------------

DRAWING No <b>02</b>	REVISION <b>11</b>
-------------------------	-----------------------

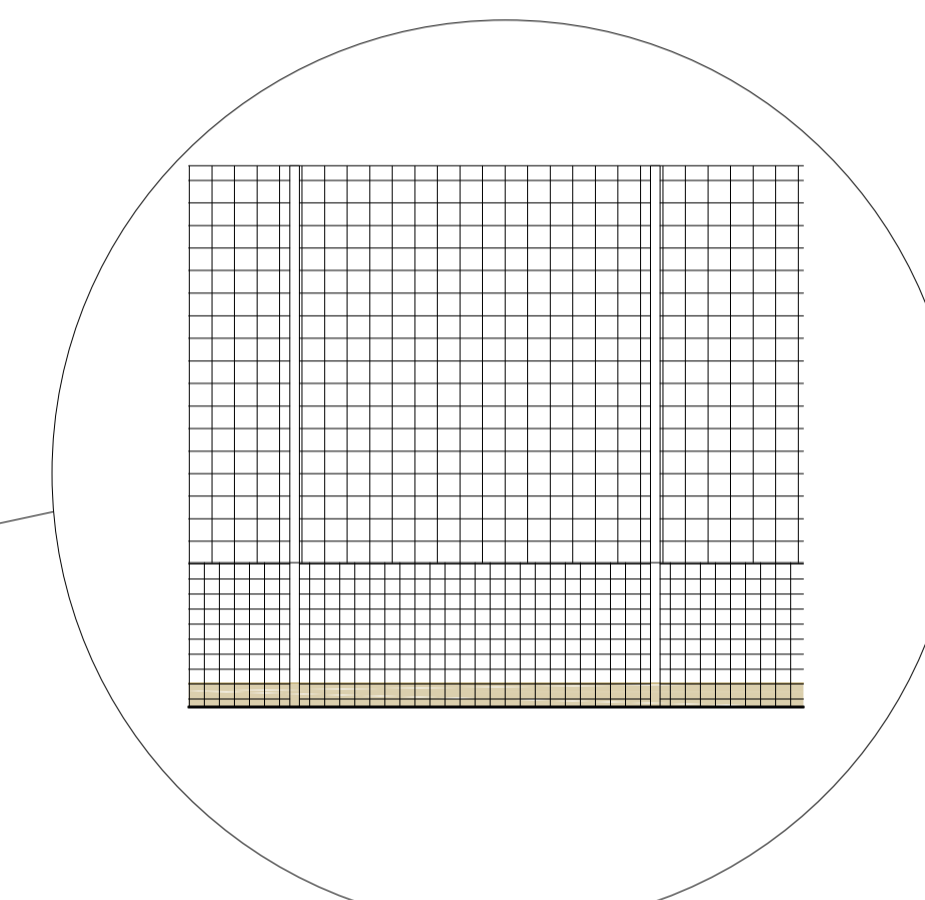
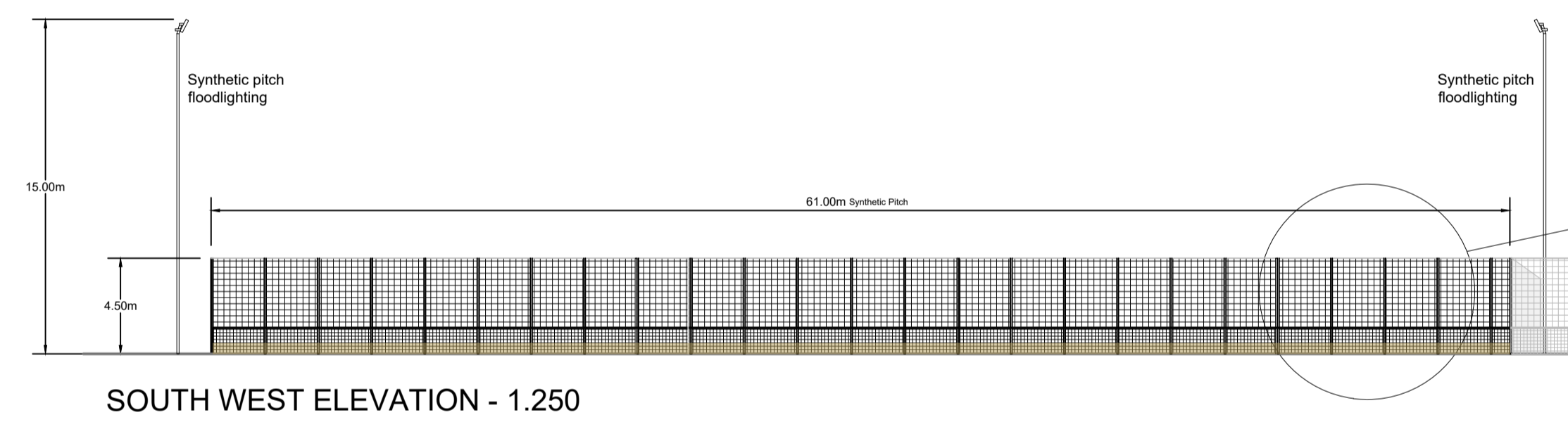
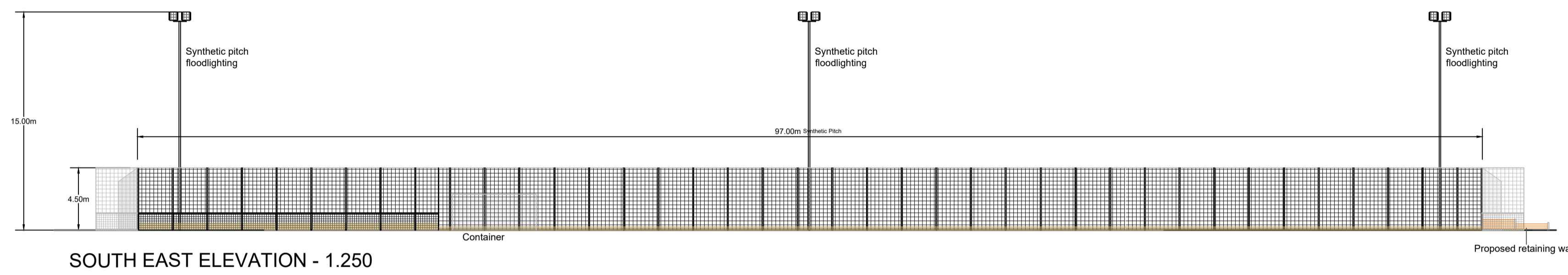
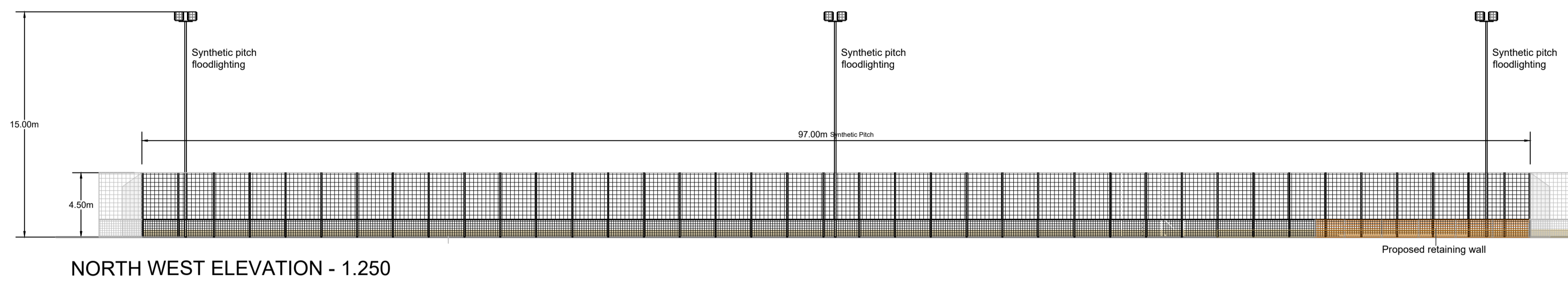


# Stockport School Artificial Turf Pitch

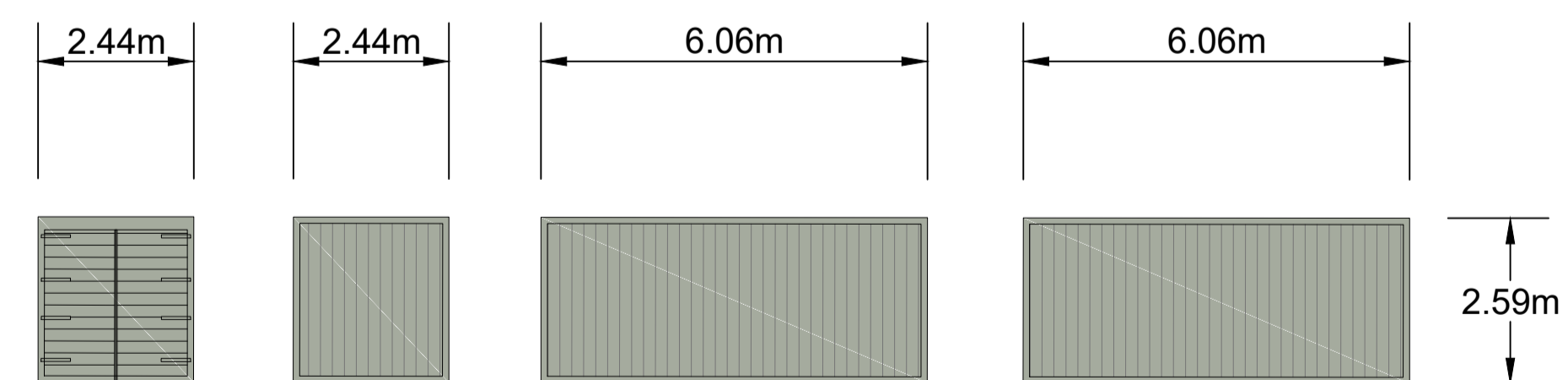
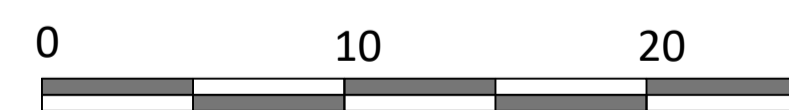
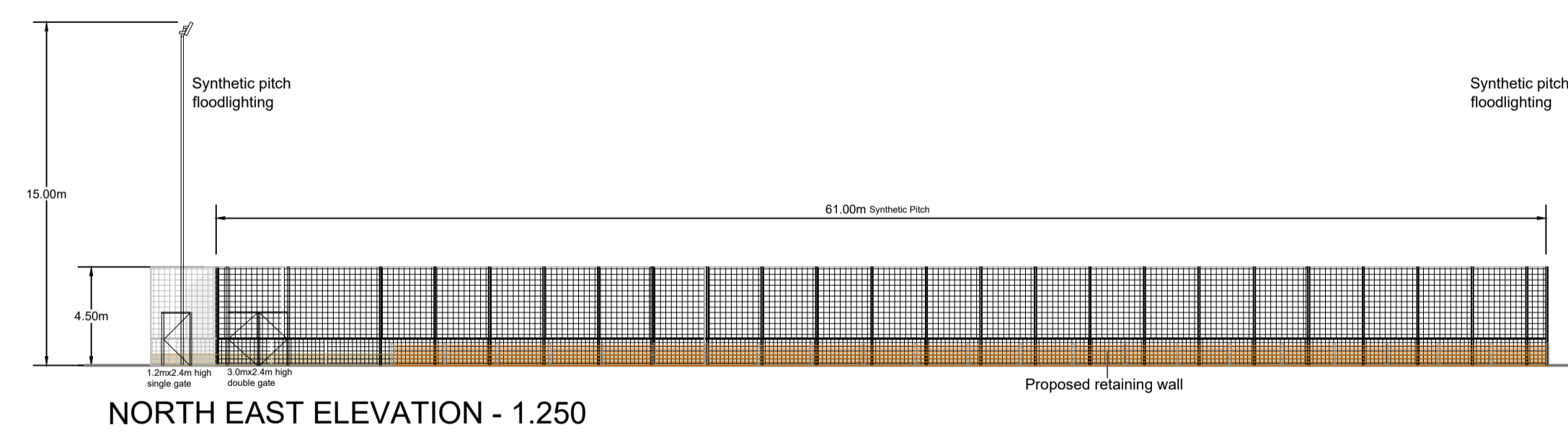
MANUFACTURER  
**CC Grass**  
 Head Office  
 Alltime Sport & Leisure GmbH  
 Hugo-Eckener-Ring  
 60549 Frankfurt am Main

CONTRACTOR  
**PST SPORT**  
 Head Office  
 Monvalley Business Park  
 Tralee  
 Co Kerry

GENERAL NOTES:  
 1 - Do not scale, except for planning purposes.



Detail of infill Mitigation Boarding  
NTS



STORAGE CONTAINER - 1.100  
 0 5 10m

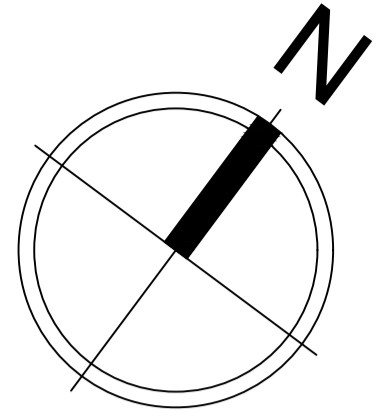
REV	DESCRIPTION	BY	CHK	DATE
03	AMENDMENTS			18.07.23
02	PITCH AND CARPARK LAYOUT			30.03.23
01	PITCH AND CARPARK LAYOUT			13.03.23



AUTHOR  
**Livia Ferraz**

TITLE  
**Stockport School  
 Elevations**

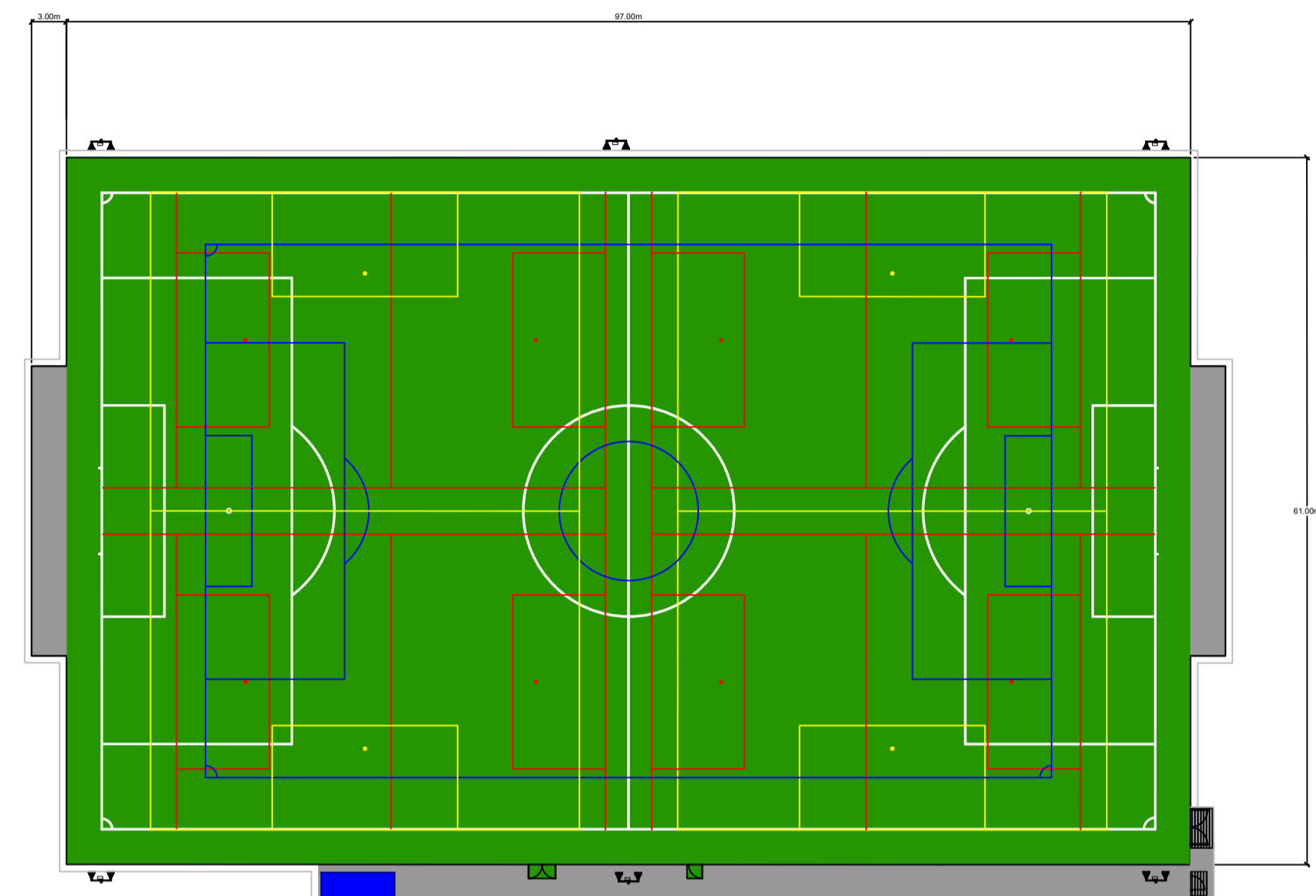
PROJECT	SCALE	SIZE
CCG/23/011/08	1:250	<b>A1</b>
DRAWING No	REVISION	
<b>08</b>	<b>03</b>	



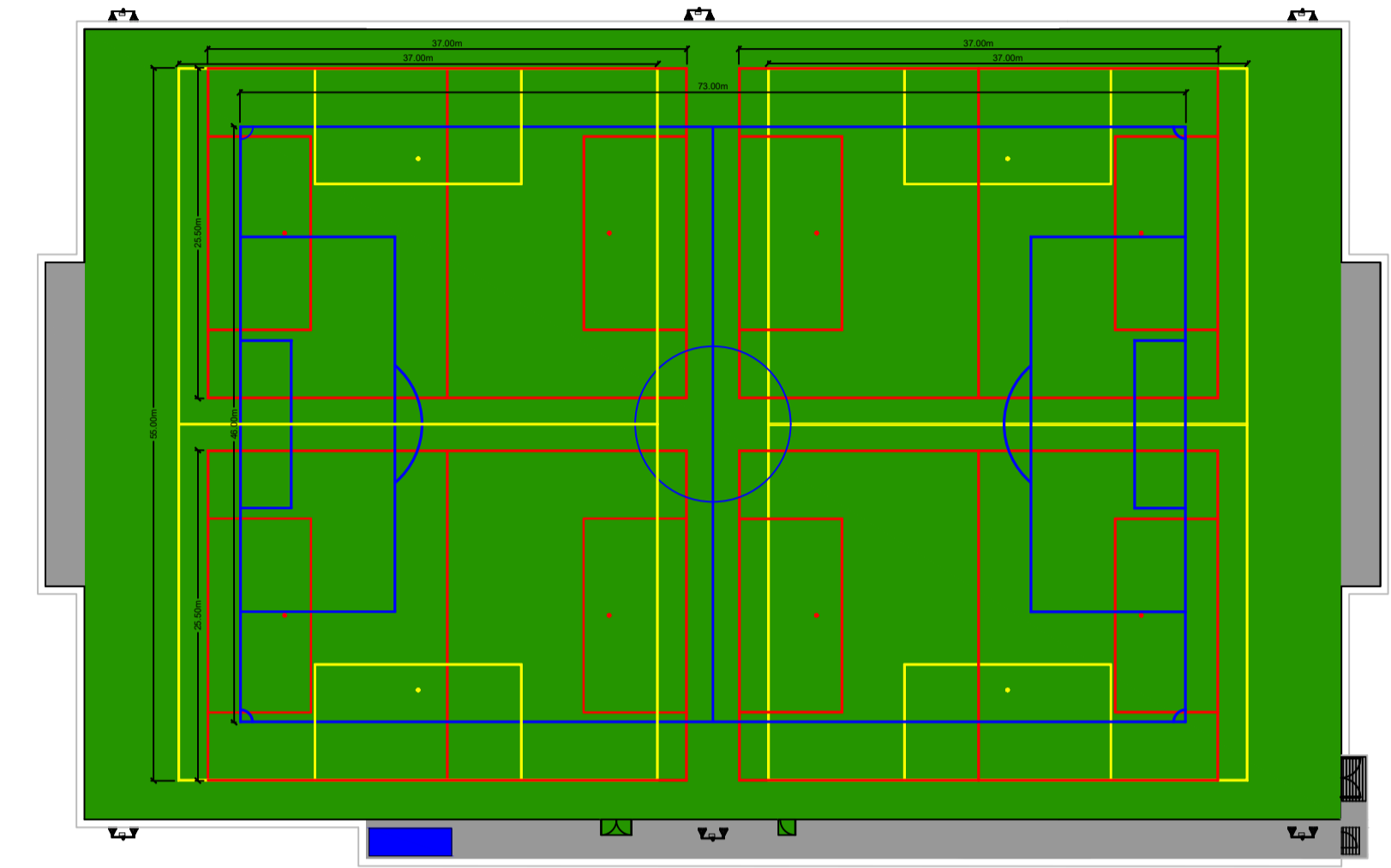
MANUFACTURER  
**CC Grass**  
 Head Office  
 Alltime Sport & Leisure GmbH  
 Hugo-Eckener-Ring  
 60549 Frankfurt am Main

CONTRACTOR  
**PST SPORT**  
 Head Office  
 Monvalley Business Park  
 Tralee  
 Co Kerry

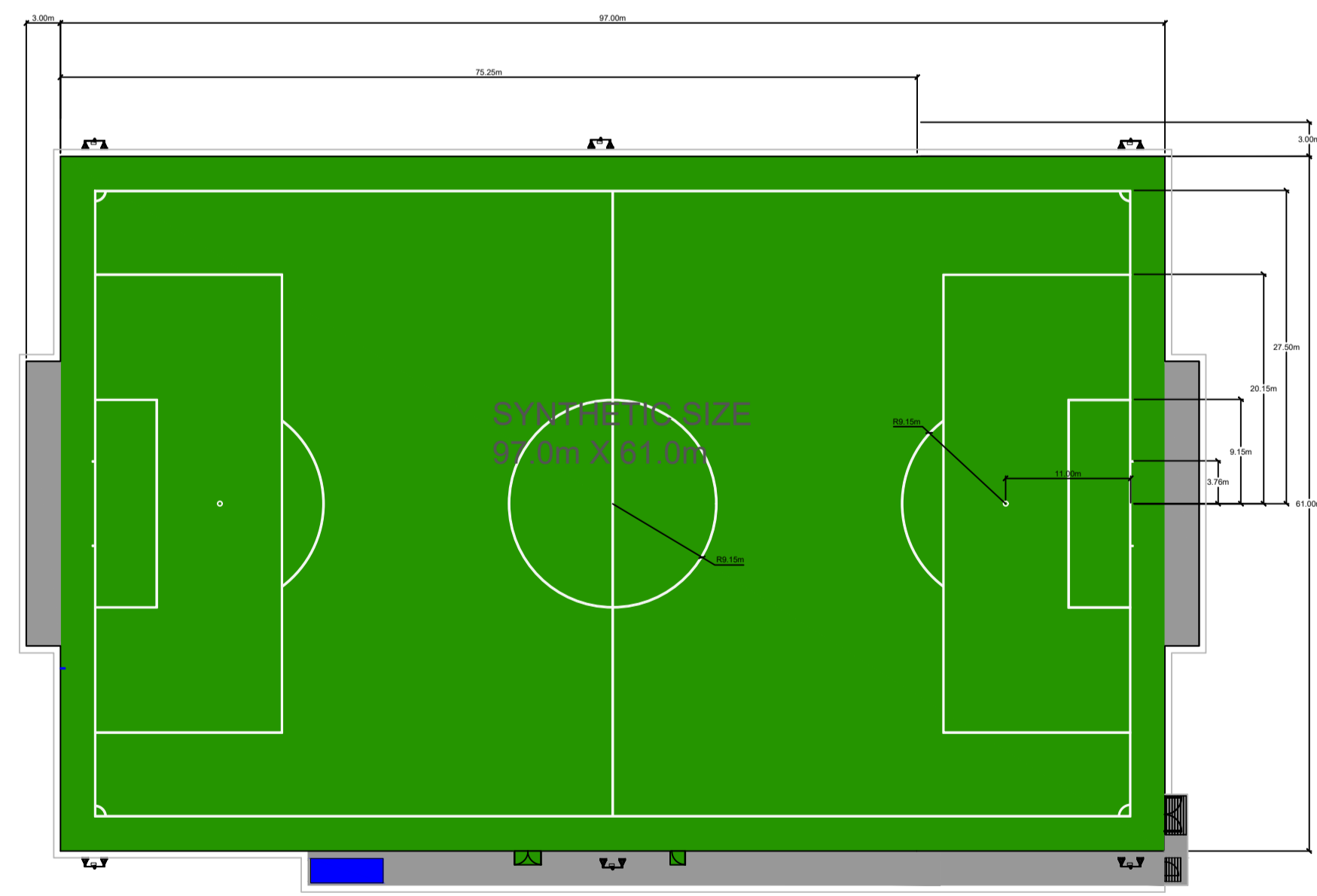
GENERAL NOTES:  
 1 - Do not scale, except for planning purposes.



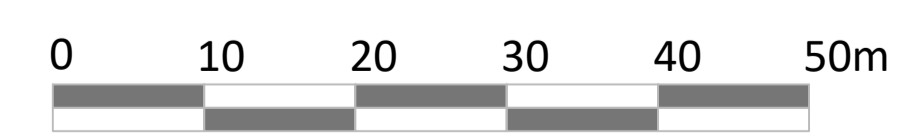
ALL LINE MARKINGS



PAINTED LINE MARKINGS



TUFTED LINE MARKINGS



PREDOMINANCE OF MARKINGS

- FOOTBALL 100MM    WHITE    TUFTED/CUT IN
- 9-A-SIDE 80MM    BLUE    LINES PAINTED
- 7-A-SIDE 80MM    YELLOW    LINES PAINTED
- 5-A-SIDE 80MM    RED    LINES PAINTED

- DIMENSIONS:
- 1No. 11 v 11    97.0m x 61.0m
  - 1No. 9 v 9    73.0m x 46.0m
  - 2No. 7 v 7    55.0m x 37.0m
  - 4No. 5 v 5    37.0m x 25.5m

REV	DESCRIPTION	BY	CHK	DATE
03	AMENDMENTS			18.07.23
02	PITCH AND CARPARK LAYOUT			30.03.23
01	PITCH AND CARPARK LAYOUT			13.03.23



AUTHOR  
**Livia Ferraz**

TITLE  
**Stockport School  
 Proposed Line Markings**

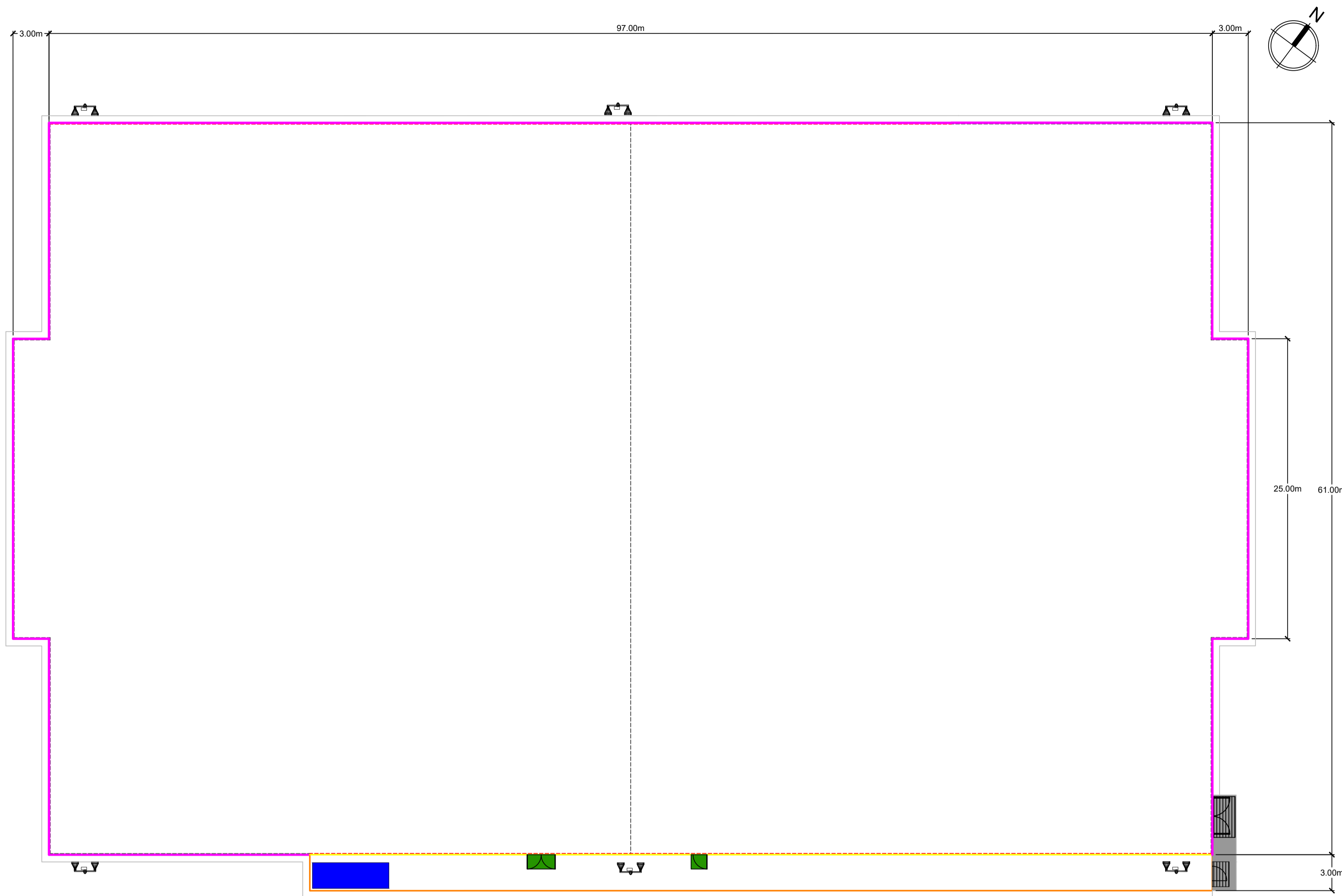
PROJECT  
 CCG/23/011/07

SCALE  
 1:500

SIZE  
**A1**

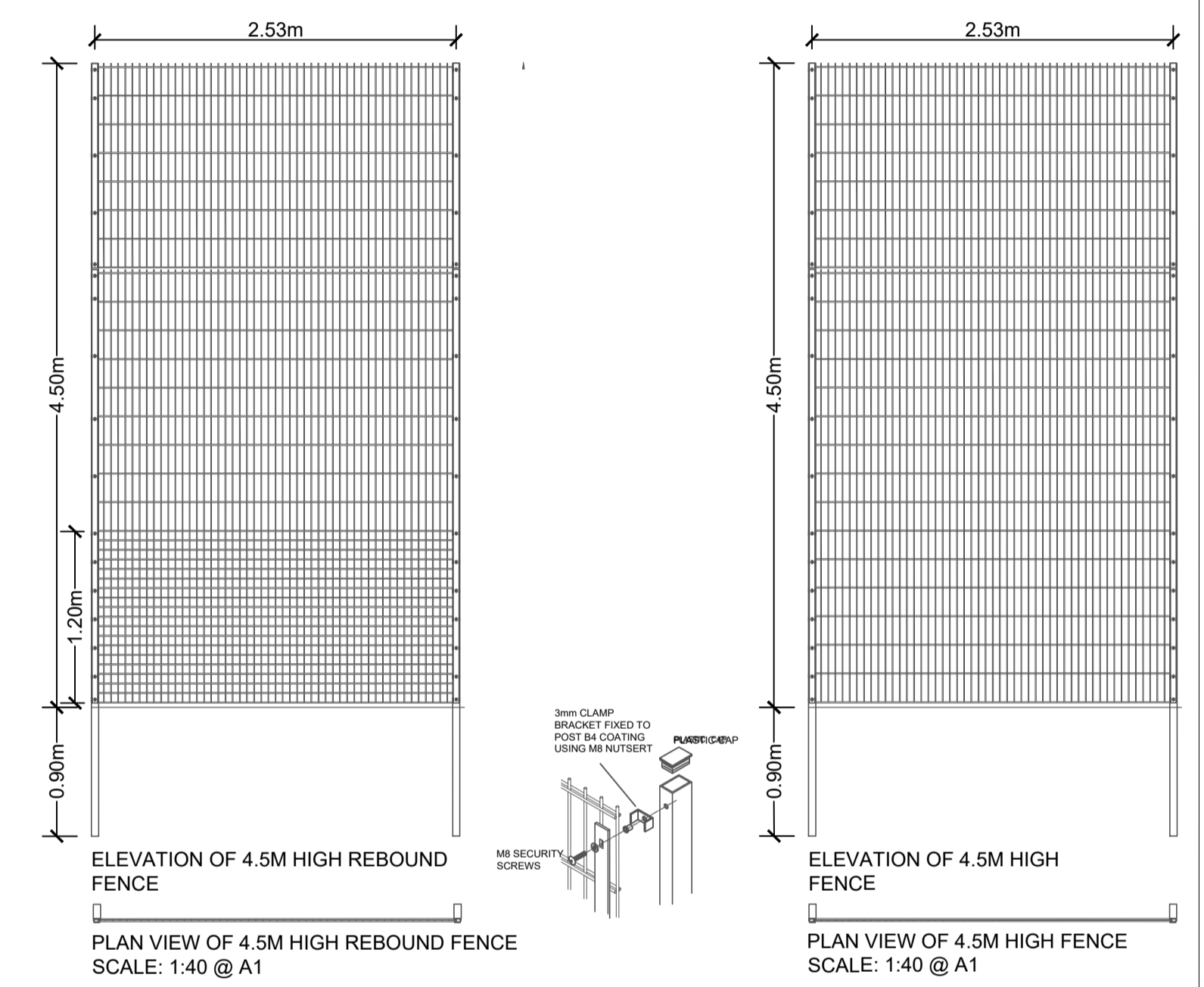
DRAWING No  
**07**

REVISION  
**03**

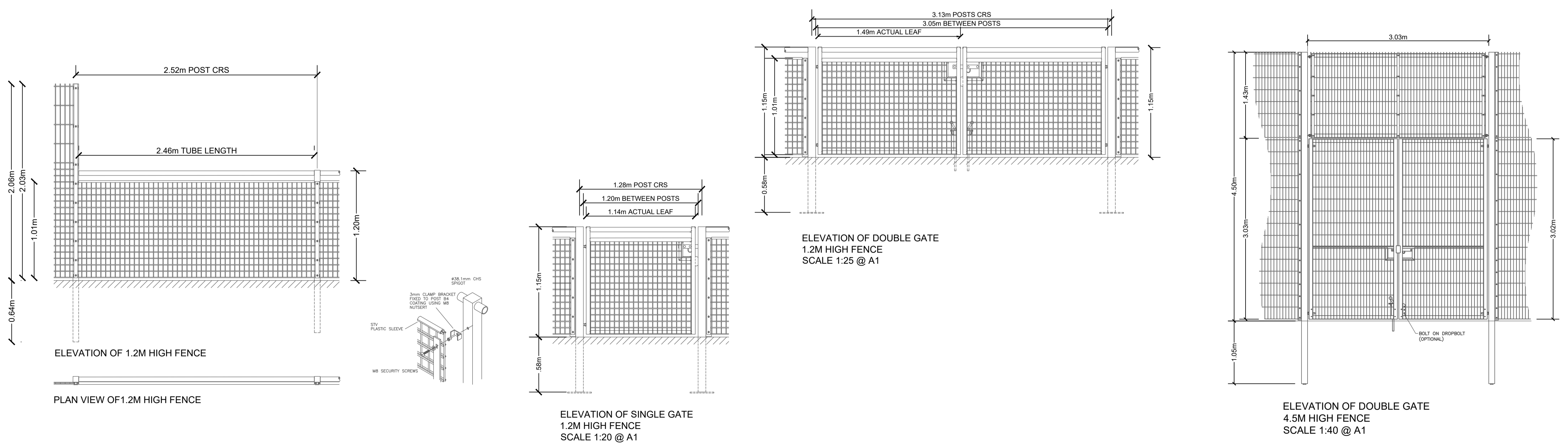


**LEGEND**

- 4.5m high Twin bar panel system with 1.2m high rebound panel incorporated in lower section
- 4.5m high Twin bar panel system
- 1.2m high rebound Twin bar panel system
- 500mm high board to bottom section of fencing (infill mitigation)
- 250mm high board to bottom section of fencing (infill mitigation)



**GENERAL LAYOUT**



MANUFACTURER <b>CC Grass</b> Head Office Alltime Sport & Leisure GmbH Hugo-Eckener-Ring 60549 Frankfurt am Main	CONTRACTOR <b>PST SPORT</b> Head Office Monvalley Business Park Tralee Co Kerry
--------------------------------------------------------------------------------------------------------------------------------	------------------------------------------------------------------------------------------------

**GENERAL NOTES:**  
1 - Do not scale, except for planning purposes.

**NOTES:**  
Twin Bar Specifications:  
"Standard" panels comprise of 6mm vertical wires sandwiched by twin 8mm horizontals (8/6/8 spec) to form a 200x50mm mesh to spectator panels are supplied with plastic cover strips to prevent hand injuries from sharps along the top of the panels.

Twin bar steelwork - RHS 1.20m high: 2.00m high: 3.00m high: 4.00m high: 4.50m high: 5.00m high.  
External corners: 80x80x3mm 60x60x2mm 80x80x2.5mm 80x80x3mm 100x100x3mm  
Internal corners 80x80x3mm 60x60x2mm 80x40x2.5mm 80x80x3mm 100x50x3mm 120x60x3mm  
Intermediate / Ends 60x60x3mm 60x60x2mm 80x40x2.5mm 100x50x3mm 100x50x3mm 120x60x3mm

S/L Gate Posts 80x80x3mm 80x80x4mm 80x80x4mm 80x80x4mm 80x80x4mm  
Note: The above gate post specifications are based on standard stock 1.20m wide single leaf gates and 3.0m wide double leaf gates.  
D/L gate posts 80x80x3mm 80x80x4mm 100x100x4mm 100x100x4mm 100x100x4mm 100x100x4mm

Powder coated finishes are based on a standard architectural grade. "Full Height Super Rebound" panels are 1030mm, 2030mm or 3030mm high and comprise of 6mm vertical wires sandwiched by twin 8mm horizontals (8/6/8 spec) to form a 66x50mm mesh to the complete height of the panel. "Super Rebound" panels are 3030mm high and comprise of 6mm vertical wires sandwiched by twin 8mm horizontals (8/6/8 spec) to form a 66x50mm mesh to the lower 1.20m of the panel and a 200x50mm mesh to the top 1.80m. Intermediate posts are to be concreted into the ground or bolted down to bases at 2.525m maximum centres.

Green standard RAL colours to BS EN 13438 2005 applies.

REV	DESCRIPTION	BY	CHK	DATE
03	AMENDMENTS			18.07.23
02	PITCH AND CARPARK LAYOUT			30.03.23
01	PITCH AND CARPARK LAYOUT			13.03.23



AUTHOR  
**Livia Ferraz**

TITLE  
**Stockport School Fence Layout**

PROJECT CCG/23/011/06	SCALE As noted	SIZE <b>A1</b>
--------------------------	-------------------	-------------------

DRAWING No <b>06</b>	REVISION <b>03</b>
-------------------------	-----------------------