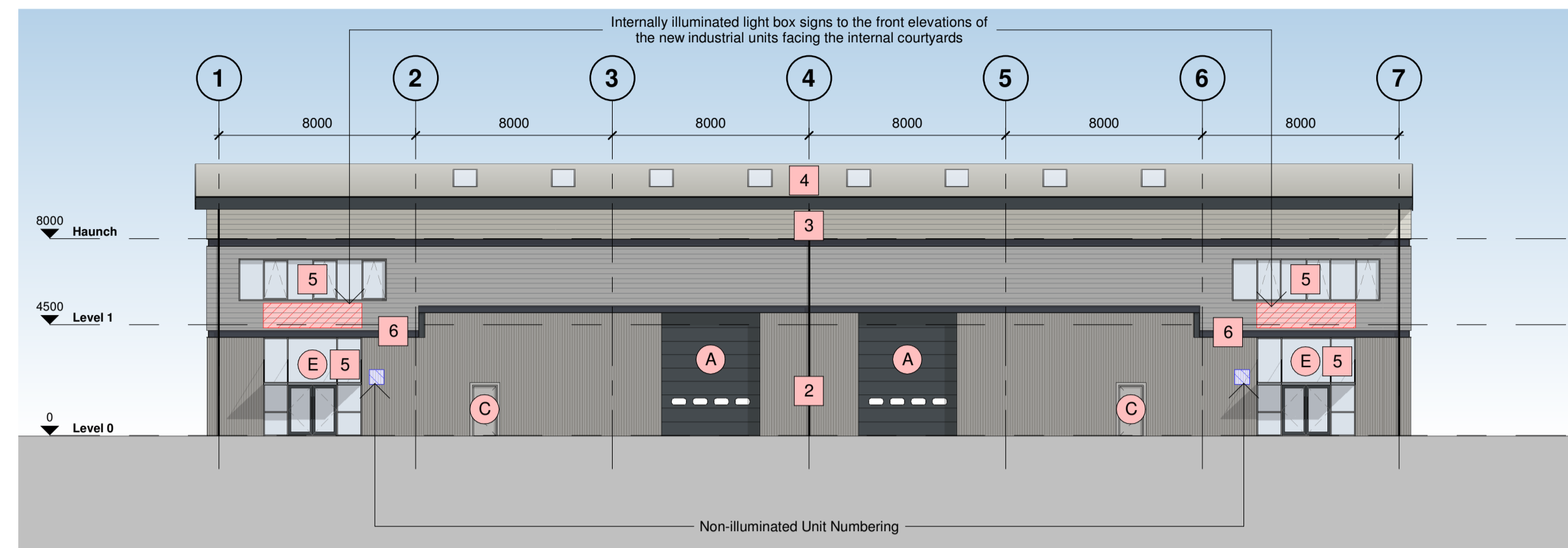


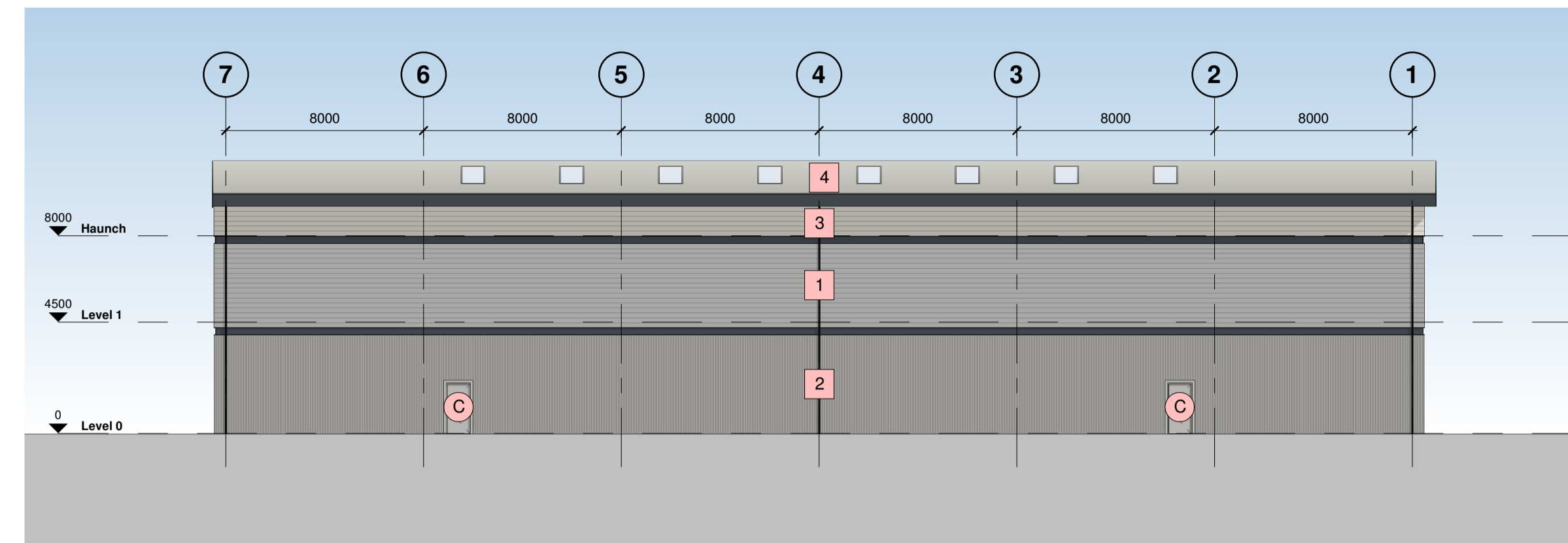
This drawing is © C4 Projects and is not to be copied, reproduced or re-distributed either in whole or in part without the prior written permission of the originator.  
The originator shall have no responsibility for any liability, loss, cost, damage or expense arising from or relating to any use of this document other than for its intended purpose on this project.  
This drawing shall be read in conjunction with all other relevant drawings, specifications and associated documentation. Any discrepancies, errors or omissions are to be reported to the originator before proceeding with work.  
All dimensions are to be checked on site by the contractor prior to proceeding with any work. This drawing shall not be scaled to ascertain any dimensions, work to figured dimensions only.

**DISCLAIMER**  
When this drawing is issued in CAD, it is an uncontrolled version issued for information only, to enable the recipient to prepare their own documents/drawings for which they are solely responsible.  
**SOFTWARE INTEROPERABILITY**  
C4 Projects prepared this drawing using Autodesk REVIT Architecture.  
C4 Projects does not accept liability for any loss or degradation of any information held in the drawing resulting from the translation from the original file format to any other file format or from the recipient's reading of it in any other programme.

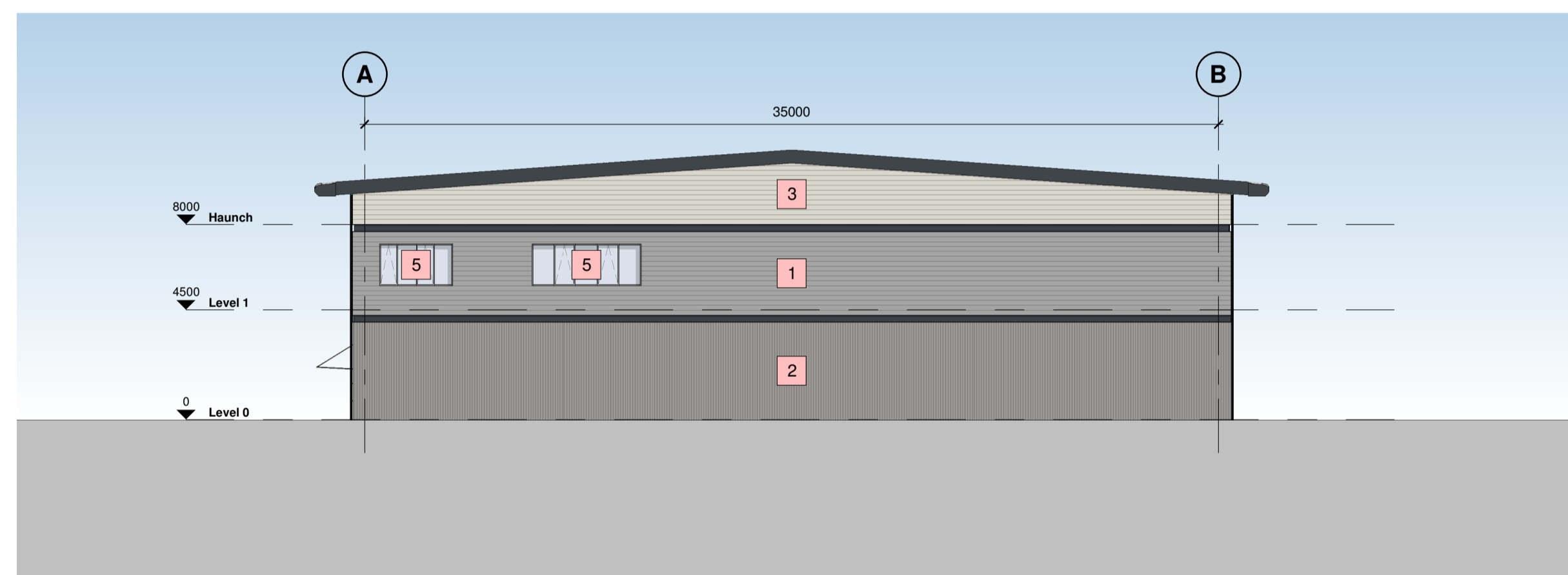
Hazard Identification		
ref	hazard	date



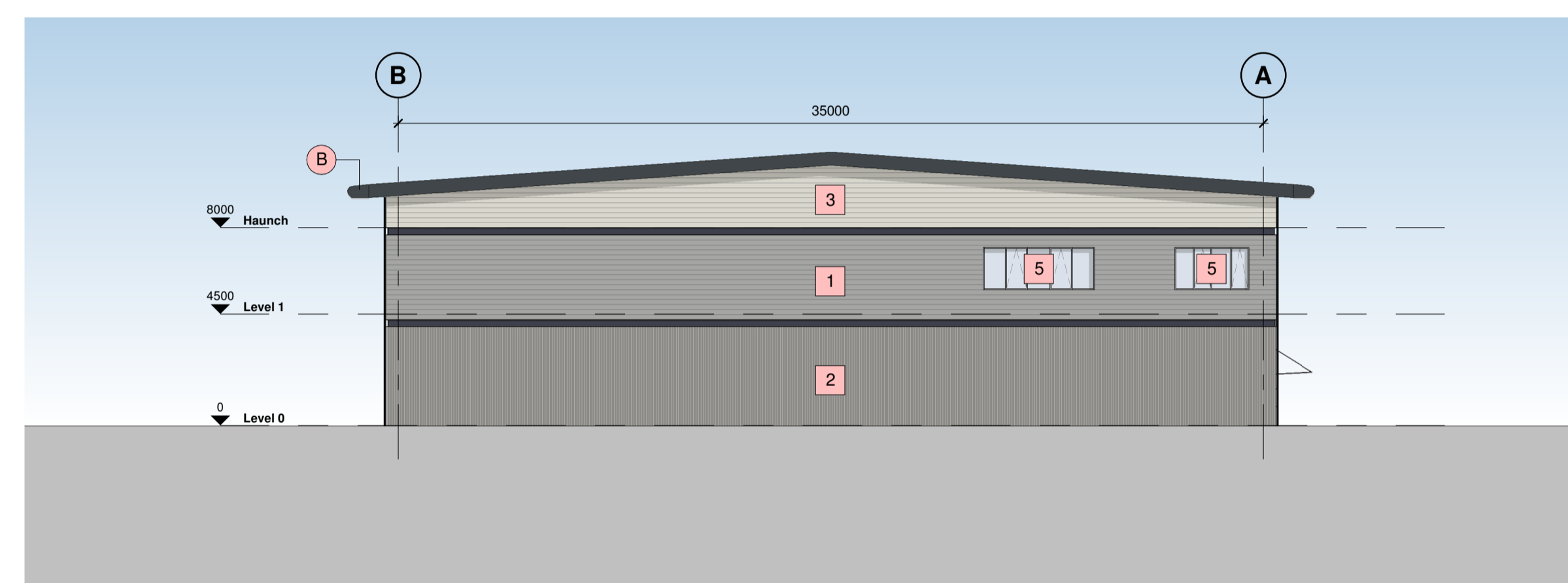
**1 North West Elevation**  
1 : 200



**2 South East Elevation**  
1 : 200



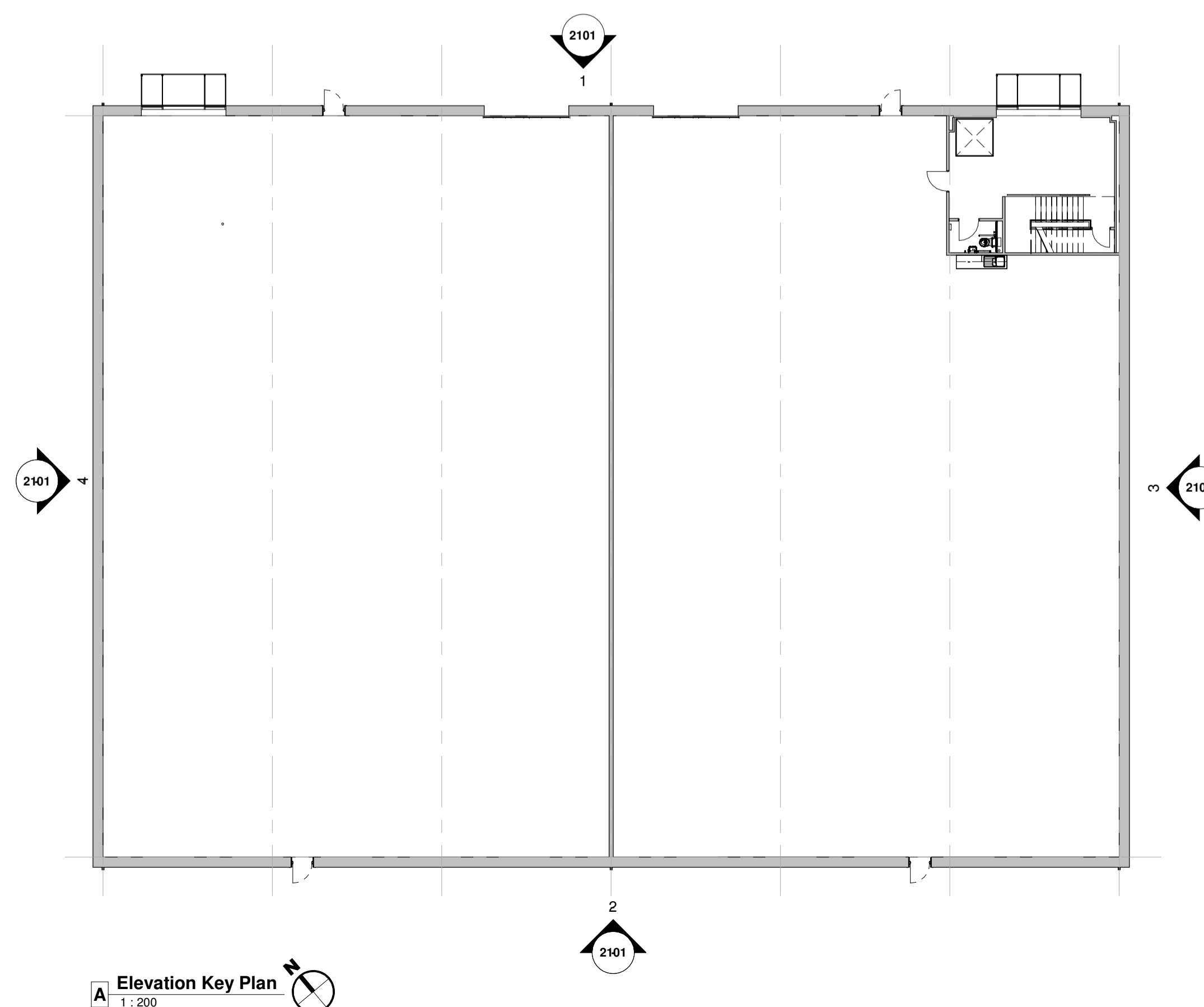
**4 South West Elevation**  
1 : 200



**3 North East Elevation**  
1 : 200

**Building Fabric Materials Schedule**

- 1** Wall Type 1 - Built-up metal cladding (twin skinned, insulated)  
Horizontally Laid Mini Sinusoidal Profile - White Aluminium (RAL 9006)
- 2** Wall Type 2 - Built-up metal cladding (twin skinned, insulated)  
Vertically Laid Trapezoidal Profile - Grey Aluminium (RAL 9007)
- 3** Wall Type 3 - Built-up metal cladding (twin skinned, insulated)  
Horizontally Laid Mini Sinusoidal Profile - Hamlet (RAL 9002)
- 4** Roof type 1, Built up metal cladding - Trapezoidal Profile -  
Goosewing Grey (RAL 7038) with 10% integrated GRP rooflights
- 5** Wall Type 4 - Aluminium Curtain Wall stick frame system  
PPC Anthracite (RAL 7016) framing, double glazed infills (solar control)
- A** Operational Door - Level Access  
Sectional insulated shutter, plastisol coated finish, Anthracite (RAL 7016)
- B** Eaves & Verge bullnoses  
Aluminium profiles, PPC finish Anthracite (RAL 7016)
- C** Personnel Access / Escape doorset - Warehouse  
Galvanised steel, PPC finish matched to cladding, thermally insulated core
- D** Rainwater Goods  
Gravity fed rain water system with Aluminium rainwater downpipes  
Colour to match cladding as required.
- E** Glazed Canopy  
Proprietary glazed canopy over doors



**A Elevation Key Plan**  
1 : 200

C06	Update Issue	BC	15.11.23	BC
C05	Annotations Added	BC	25.09.23	BC
C04	Entrance Door/Curtain Walling amended/Future Light Box and Unit number locations added. PFC colour updated	JTJ	21.06.23	BC
C03	Construction Issue	JTJ	01.02.23	BC
C02	Contract Update Issue	BC	15.12.22	BC
C01	Contract Issue	JN	22.11.22	BC
Rev	Revision Details	Drawn	Date	Checked



Project Management • Architecture • Building Surveying • Cost Consultancy

Client  
**WUKPG**

Project  
**Vauxhall Industrial Estate  
Stockport**

Drawing Title  
**Unit 1 - Proposed Elevations**

Status Purpose of Issue  
**A APPROVED**

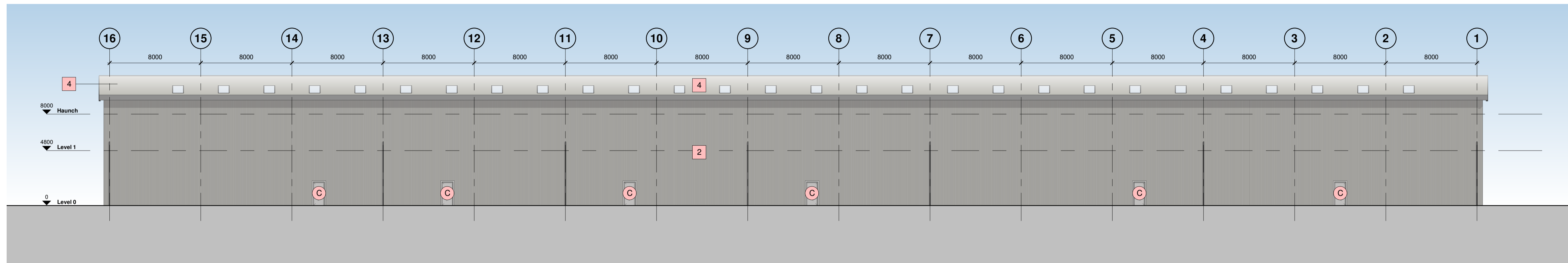
Drawn by BC Created July 21  
C4 Job no. **21093** Scale As indicated @ A1

Dwg no. **21093-C4P-V1-ZZ-DR-A-2101** Rev **C06**

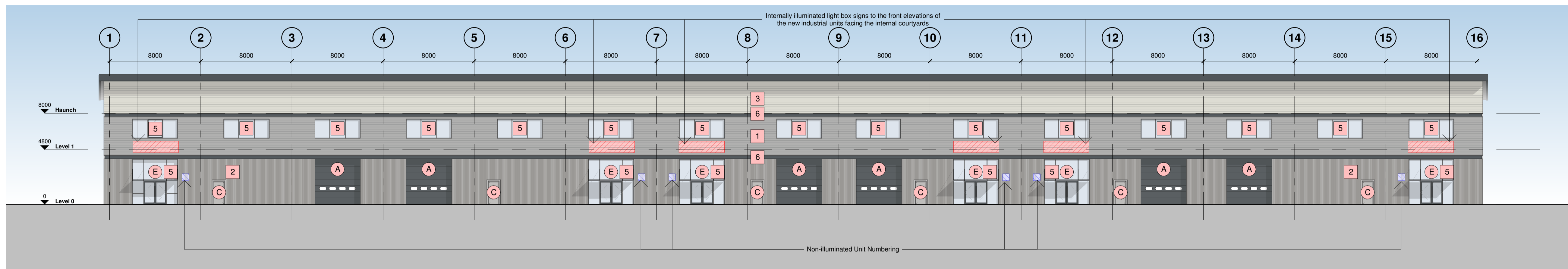
This drawing is © C4 Projects and is not to be copied, reproduced or re-distributed either in whole or in part without the prior written permission of the originator.  
The originator shall have no responsibility for any liability, loss, cost, damage or expense arising from or relating to any use of this document other than for its intended purpose on this project.  
This drawing shall be read in conjunction with all other relevant drawings, specifications and associated documentation. Any discrepancies, errors or omissions are to be reported to the originator before proceeding with work.  
All dimensions are to be checked on site by the contractor prior to proceeding with any work. This drawing shall not be scaled to ascertain any dimensions, work to figured dimensions only.

**DISCLAIMER**  
When this drawing is issued in CAD, it is an uncontrolled version issued for information only, to enable the recipient to prepare their own documents/ drawings for which they are solely responsible.  
**SOFTWARE INTEROPERABILITY**  
C4 Projects prepared this drawing using Autodesk REVIT Architecture.  
C4 Projects does not accept liability for any loss or degradation of any information held in the drawing resulting from the translation from the original file format to any other file format or from the recipient's reading of it in any other programme.

Hazard Identification		
ref	hazard	date



**1 North West Elevation**  
1 : 200



**2 South East Elevation**  
1 : 200

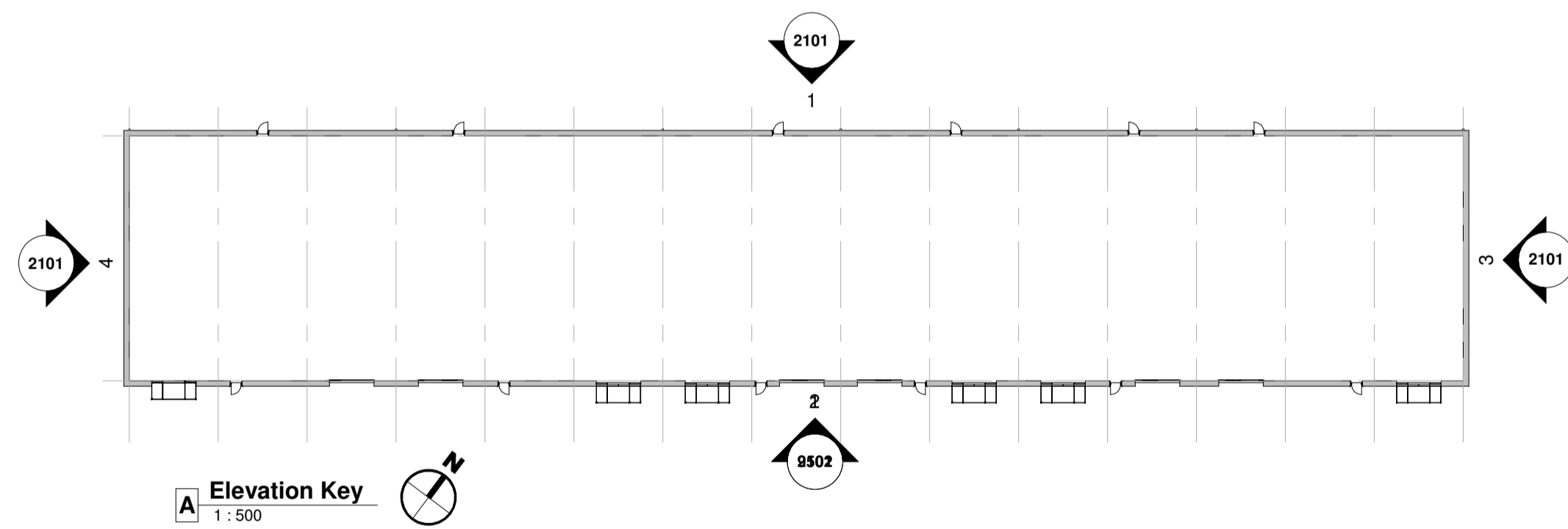
**REFERENCE DRAWINGS**

- Architectural 21093-C4P-:
- AV-XX-DR-A-0102 - Site Plan as Existing
  - AV-ZZ-DR-A-0501 - Site Plan as Proposed
  - AV-ZZ-DR-A-0512 - Proposed Surface & Boundary Treatments
  - AV-ZZ-DR-A-0521 - Unit 1 - Site Context Plan as Proposed
  - AV-ZZ-DR-A-0522 - Unit 2 - Site Context Plan as Proposed
  - AV-ZZ-DR-A-0523 - Unit 3 - Site Context Plan as Proposed
  - AV-ZZ-DR-A-0524 - Unit 4 - Site Context Plan as Proposed
  - AV-ZZ-DR-A-0525 - Unit 5 - Site Context Plan as Proposed
  - AV-ZZ-DR-A-0526 - Unit 6 - Site Context Plan as Proposed

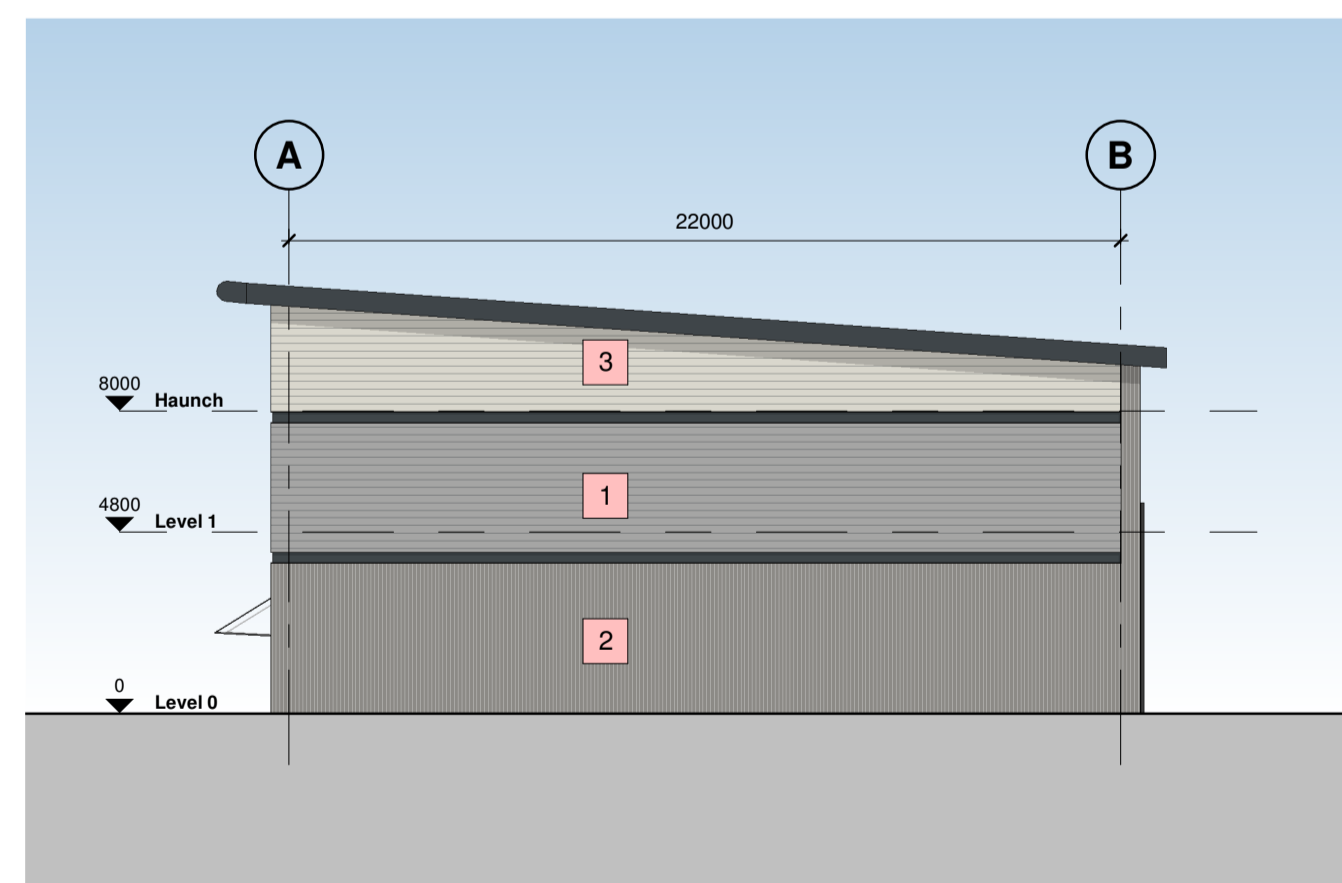
- Refer to 20 Series For Building GA Plans
- Refer to 21 Series For Building GA Elevations
- Refer to 22 Series For Building GA Sections
- Refer to 25/26 Series For Detailed Sections and Plans
- Refer to 40 to 45 Series For Schedules

**DRAWING NOTES:**

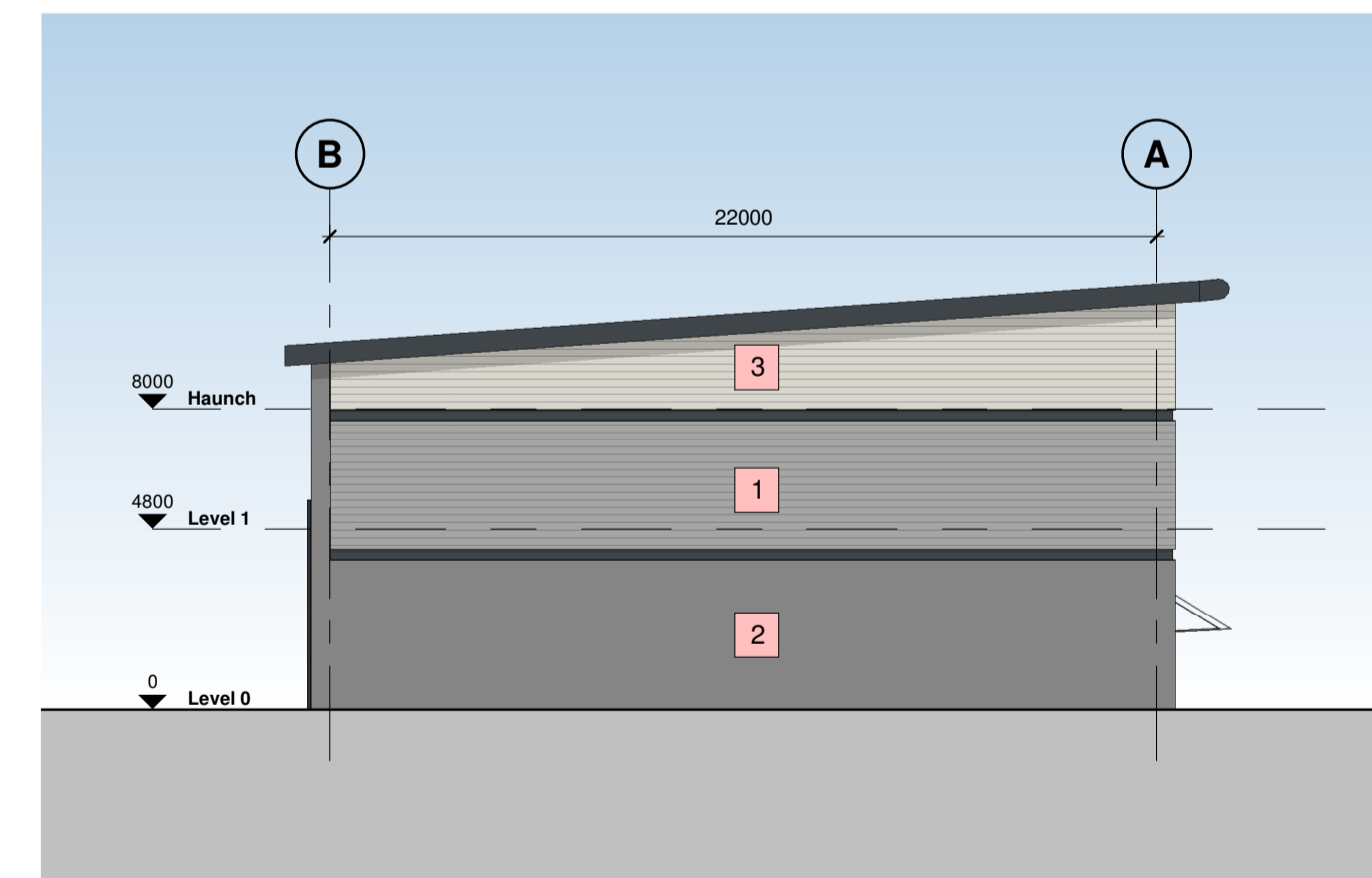
- Refer to Structural Engineer's (SE) drawings for structure details and specification.
- Drainage point positions in warehouse subject to change to suit client requirements.



**A Elevation Key**  
1 : 500



**3 North East Elevation**  
1 : 200



**4 South West Elevation**  
1 : 200

**Building Fabric Materials Schedule**

- 1** Wall Type 1 - Built-up metal cladding (twin skinned, insulated) Horizontally Laid Mini Sinusoidal Profile - White Aluminium (RAL 9006)
- 2** Wall Type 2 - Built-up metal cladding (twin skinned, insulated) Vertically Laid Trapezoidal Profile - Grey Aluminium (RAL 9007)
- 3** Wall Type 3 - Built-up metal cladding (twin skinned, insulated) Horizontally Laid Mini Sinusoidal Profile - Hamlet (RAL 9002)
- 4** Roof type 1, Built up metal cladding - Trapezoidal Profile - Goosewing Grey (RAL 7038) with 10% intergrated GRP rooflights
- 5** Wall Type 4 - Aluminium Curtain Wall stick frame system PPC Anthracite (RAL 7016) framing, double glazed infills (solar control)
  
- A** Operational Door - Level Access Sectional insulated shutter, plastisol coated finish, Anthracite (RAL 7016)
- B** Eaves & Verges bullnoses Aluminium profiles, PPC finish Anthracite (RAL 7016)
- C** Personnel Access / Escape doorset - Warehouse Galvanised steel, PPC finish matched to cladding, thermally insulated core
- D** Rainwater Goods Gravity fed rain water system with Aluminium rainwater downpipes Colour to match cladding as required.
- E** Glazed Canopy Proprietary glazed canopy over doors

C08	Update Issue	BC	15.11.23	BC
C07	Window Added	BC	29.09.23	BC
C06	Annotations Added	BC	25.09.23	BC
C05	Future Light Box and Unit number locations added, PFC colour updated	BC	21.06.23	BC
C04	Rear Elevation Amended	BC	06.03.23	BC
C03	Level Access Door added back	BC	14.02.23	BC
C02	Construction Issue	JTJ	01.02.23	BC
C01	Contract Issue	JN	22.11.22	BC
Rev	Revision Details	Drawn	Date	Checked

**C4 Projects**  
Quayside, Widespool Business Park, Stockton Heath, W44 6HL, t: 01925 751 852 e: info@c4projects.co.uk www.c4projects.co.uk  
Project Management • Architecture • Building Surveying • Cost Consultancy

Client  
**WUKPG**

Project  
**Vauxhall Industrial Estate Stockport**

Drawing Title  
**Unit 2 - Proposed Elevations**

Status Purpose of Issue  
**A APPROVED**

Drawn by	BC	Created	July 21
C4 Job no.	<b>21093</b>	Scale	As indicated @ A1

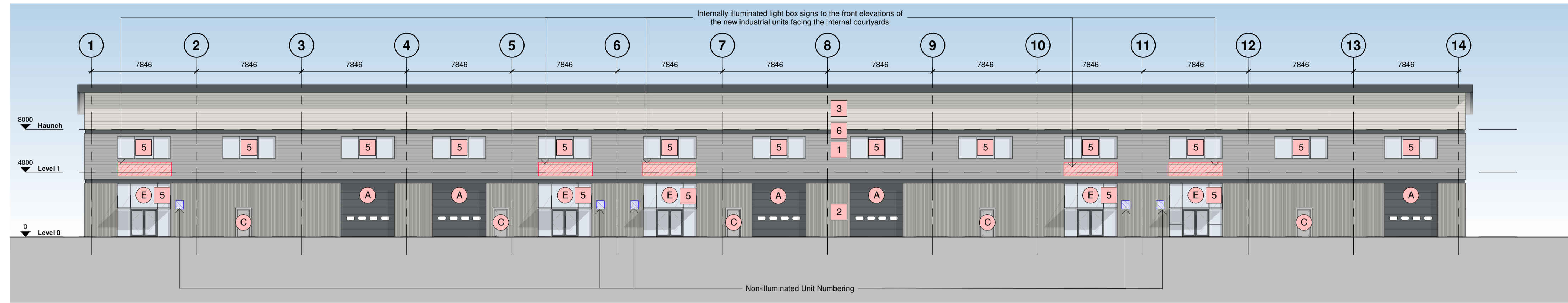
Dwg no.	<b>21093-C4P-V2-ZZ-DR-A-2101</b>	Rev	<b>C08</b>
---------	----------------------------------	-----	------------

This drawing is © C4 Projects and is not to be copied, reproduced or re-distributed either in whole or in part without the prior written permission of the originator.  
The originator shall have no responsibility for any liability, loss, cost, damage or expense arising from or relating to any use of this document other than for its intended purpose on this project.  
This drawing shall be read in conjunction with all other relevant drawings, specifications and associated documentation. Any discrepancies, errors or omissions are to be reported to the originator before proceeding with work.  
All dimensions are to be checked on site by the contractor prior to proceeding with any work. This drawing shall not be scaled to ascertain any dimensions, work to figured dimensions only.

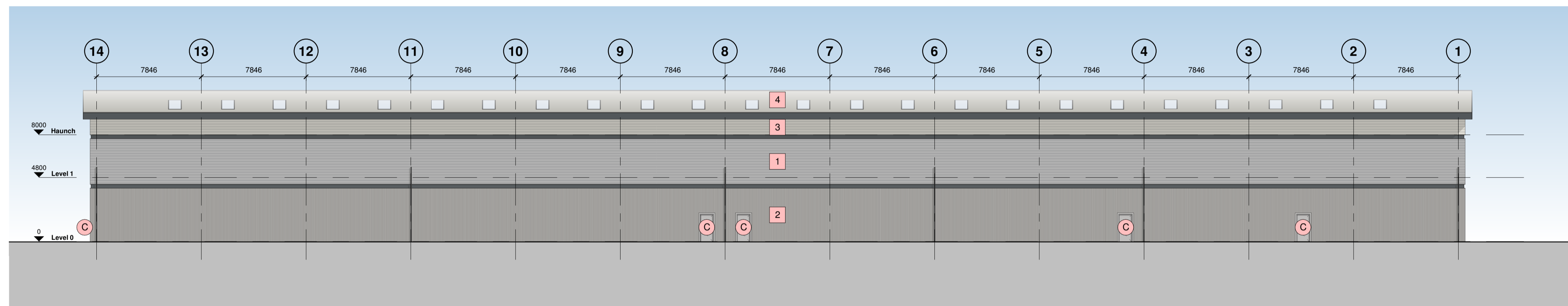
**DISCLAIMER**  
When this drawing is issued in CAD, it is an uncontrolled version issued for information only. To enable the recipient to prepare their own documents/drawings for which they are solely responsible.

**SOFTWARE INTEROPERABILITY**  
C4 Projects prepared this drawing using Autodesk REVIT Architecture.  
C4 Projects does not accept liability for any loss or degradation of any information held in the drawing resulting from the translation from the original file format to any other file format or from the recipient's reading of it in any other program.

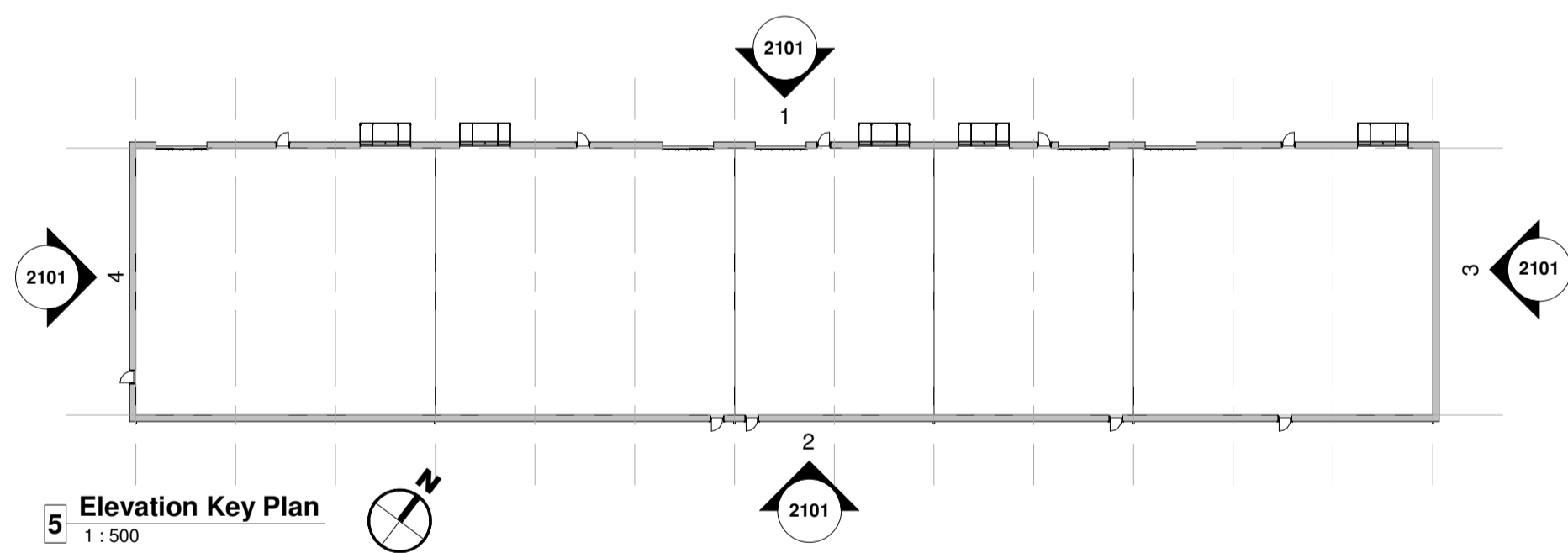
Hazard Identification		
ref	hazard	date



**1 North West Elevation**  
1:200



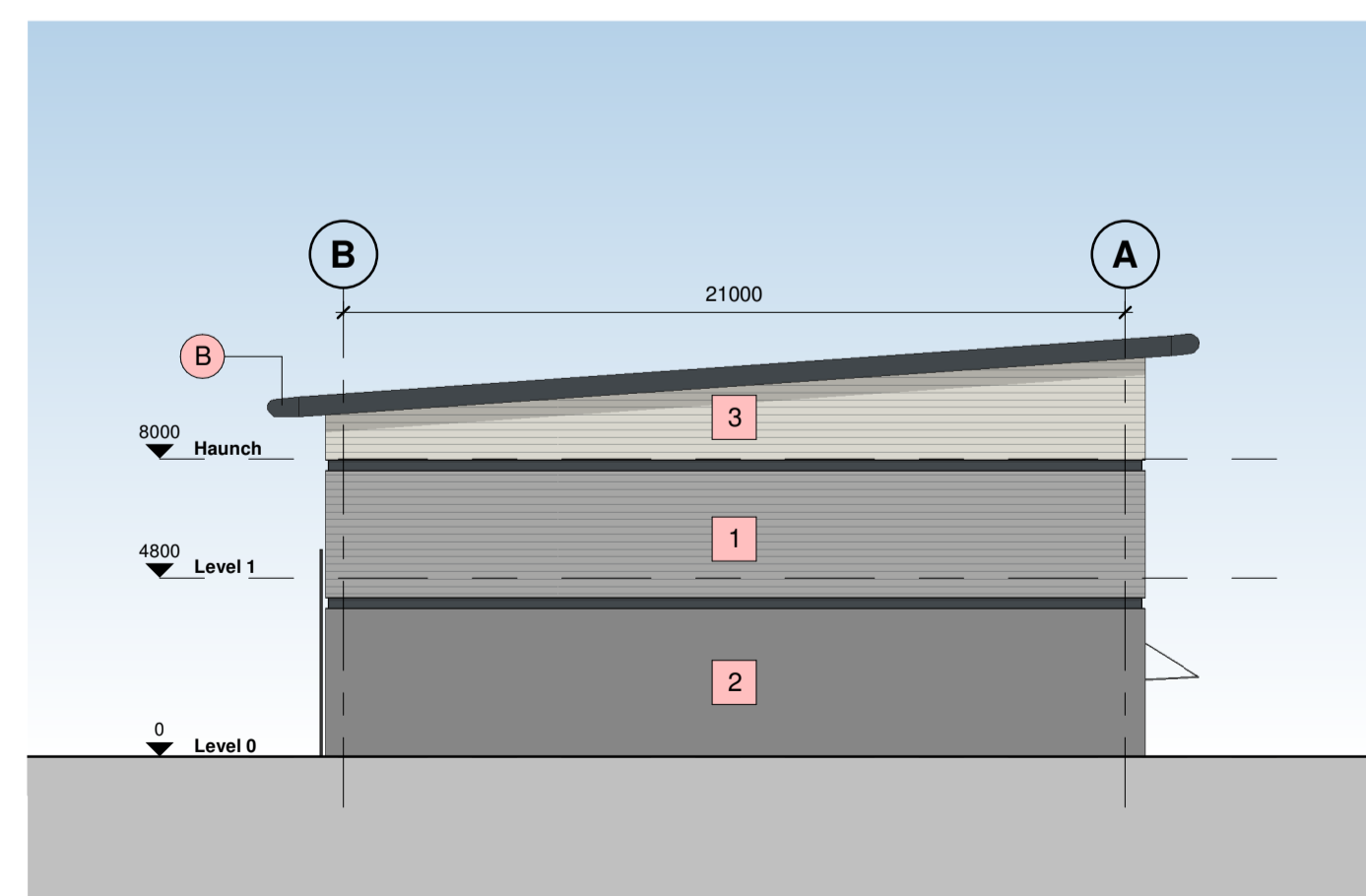
**2 South East Elevation**  
1:200



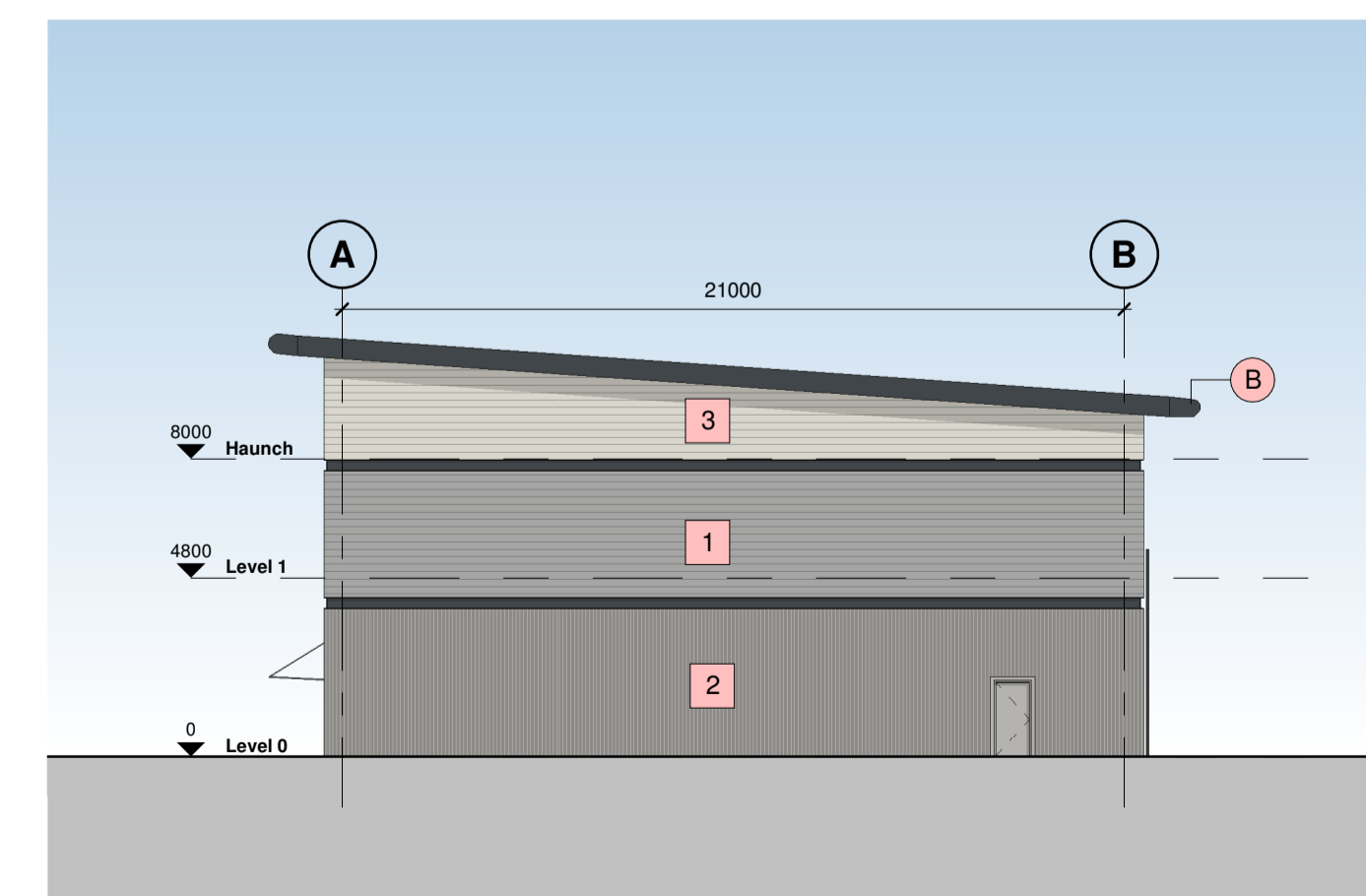
**5 Elevation Key Plan**  
1:500

**Building Fabric Materials Schedule**

- 1** Wall Type 1 - Built-up metal cladding (twin skinned, insulated)  
Horizontally Laid Mini Sinusoidal Profile - White Aluminium (RAL 9006)
- 2** Wall Type 2 - Built-up metal cladding (twin skinned, insulated)  
Vertically Laid Trapezoidal Profile - Grey Aluminium (RAL 9007)
- 3** Wall Type 3 - Built-up metal cladding (twin skinned, insulated)  
Horizontally Laid Mini Sinusoidal Profile - Hamlet (RAL 9002)
- 4** Roof type 1, Built up metal cladding - Trapezoidal Profile -  
Goosewing Grey (RAL 7038) with 10% integrated GRP rooflights
- 5** Wall Type 4 - Aluminium Curtain Wall stick frame system  
PPC Anthracite (RAL 7016) framing, double glazed infills (solar control)
  
- A** Operational Door - Level Access  
Sectional insulated shutter, plastisol coated finish, Anthracite (RAL 7016)
- B** Eaves & Verges bullnoses  
Aluminium profiles, PPC finish Anthracite (RAL 7016)
- C** Personnel Access / Escape doorset - Warehouse  
Galvanised steel, PPC finish matched to cladding, thermally insulated core
- D** Rainwater Goods  
Gravity fed rain water system with Aluminium rainwater downpipes  
Colour to match cladding as required.
- E** Glazed Canopy  
Proprietary glazed canopy over doors



**3 North East Elevation**  
1:200



**4 South West Elevation**  
1:200

<b>C05</b> Update Issue	BC	15.11.23	BC	
<b>C04</b> Annotations Added	BC	25.09.23	BC	
<b>C03</b> Future Light Box and Unit number locations added. PFC colour updated	BC	21.06.23	BC	
<b>C02</b> Construction Issue	JTJ	01.02.23	BC	
<b>C01</b> Contract Issue	JN	22.11.22	BC	
Rev	Revision Details	Drawn	Date	Checked

**C4 Projects**  
Quayside, Walspool Business Park, Stockton Heath, W44 6HL, t: 01925 751 852 e: info@c4projects.co.uk www.c4projects.co.uk  
Project Management • Architecture • Building Surveying • Cost Consultancy

**Client**  
WUKPG

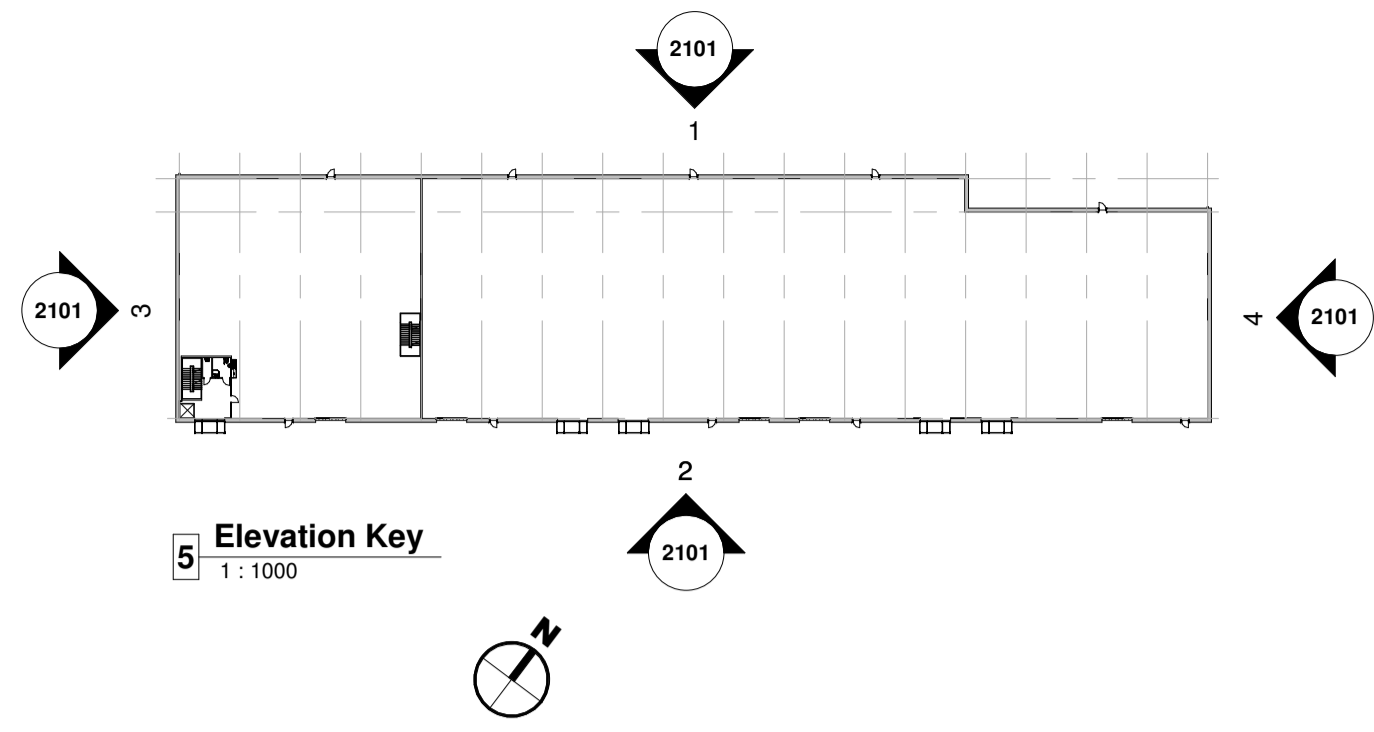
**Project**  
Vauxhall Industrial Estate Stockport

**Drawing Title**  
Unit 3 - Proposed Elevations

**Status Purpose of Issue**  
**A APPROVED**

**Drawn by** BE **Created** May 21  
**C4 Job no.** 21093 **Scale** As indicated @ A1

**Dwg no.** 21093-C4P-V3-ZZ-DR-A-2101 **Rev** C05

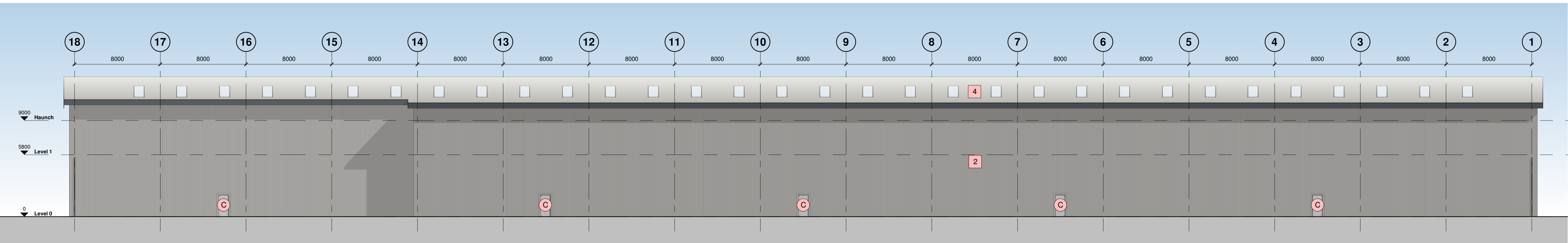


0m 4m 8m 12m 16m  
VISUAL SCALE 1:200 @ A1

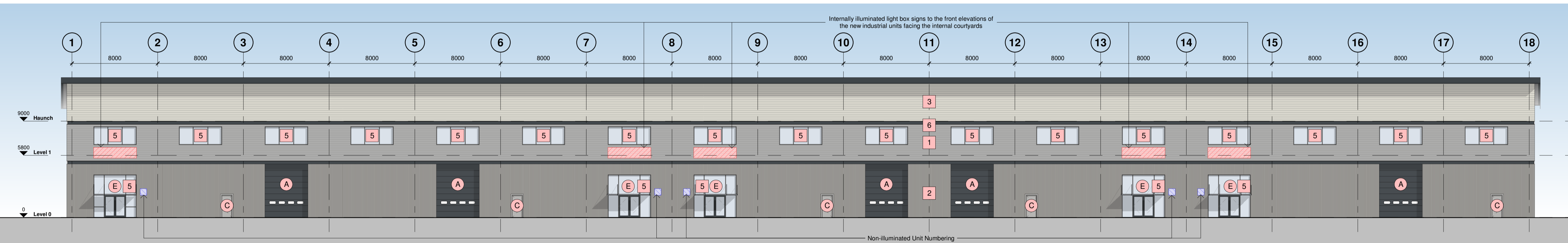
**CONSTRUCTION**

This drawing is © C4 Projects and is not to be copied, reproduced or re-distributed either in whole or in part without the prior written permission of the originator.  
The originator shall have no responsibility for any liability, loss, cost, damage or expense arising from or relating to any use of this document other than for its intended purpose on this project.  
This drawing shall be read in conjunction with all other relevant drawings, specifications and associated documentation. Any discrepancies, errors or omissions are to be reported to the originator before proceeding with work.  
All dimensions are to be checked on site by the contractor prior to proceeding with any work. This drawing shall not be scaled to ascertain any dimensions, work to figured dimensions only.  
**DISCLAIMER**  
When this drawing is issued in CAD, it is an uncontrolled version issued for information only, to enable the recipient to prepare their own documents/drawings for which they are solely responsible.  
**SOFTWARE INTEROPERABILITY**  
C4 Projects prepared this drawing using Autodesk REVIT Architecture.  
C4 Projects does not accept liability for any loss or degradation of any information held in the drawing resulting from the translation from the original file format to any other file format or from the recipient's reading of it in any other programme.

Hazard Identification		
ref	hazard	date



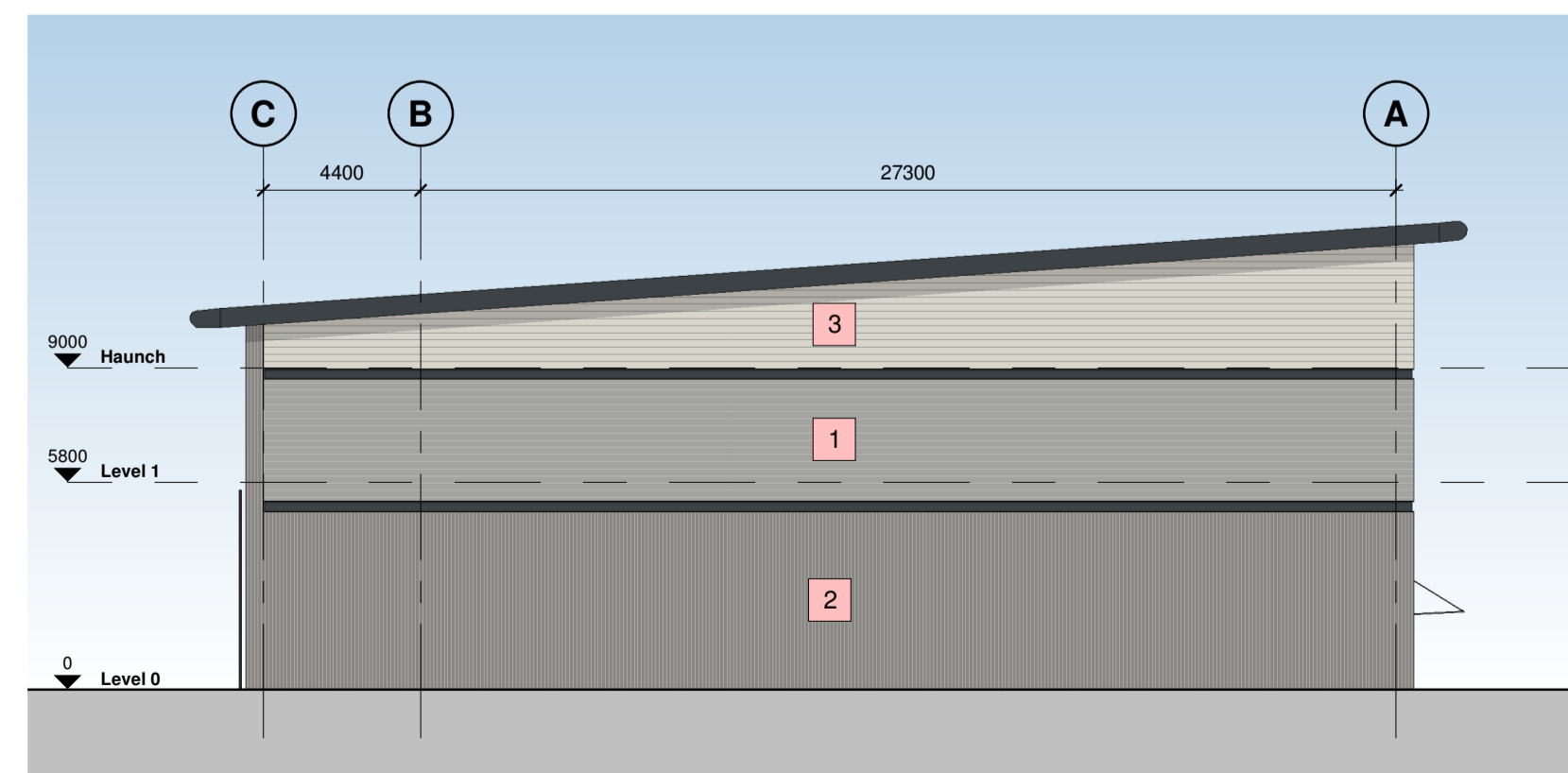
**1 North West Elevation**  
1:200



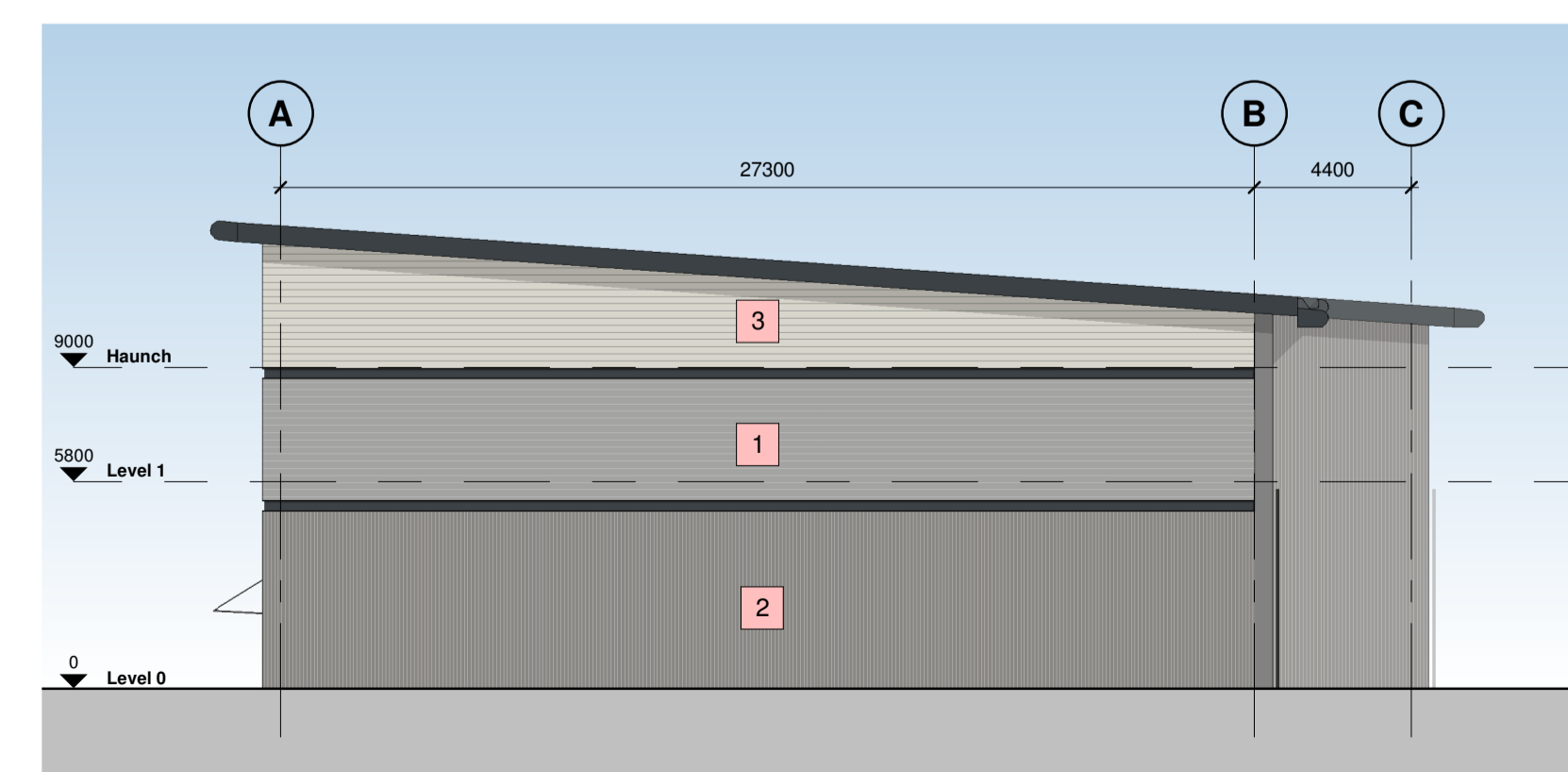
**2 South East Elevation**  
1:200

**Building Fabric Materials Schedule**

- 1** Wall Type 1 - Built-up metal cladding (twin skinned, insulated) Horizontally Laid Mini Sinusoidal Profile - White Aluminium (RAL 9006)
- 2** Wall Type 2 - Built-up metal cladding (twin skinned, insulated) Vertically Laid Trapezoidal Profile - Grey Aluminium (RAL 9007)
- 3** Wall Type 3 - Built-up metal cladding (twin skinned, insulated) Horizontally Laid Mini Sinusoidal Profile - Hamlet (RAL 9002)
- 4** Roof type 1, Built up metal cladding - Trapezoidal Profile - Goosewing Grey (RAL 7038) with 10% intergrated GRP rooflights
- 5** Wall Type 4 - Aluminium Curtain Wall stick frame system PPC Anthracite (RAL 7016) framing, double glazed infills (solar control)
- A** Operational Door - Level Access Sectional insulated shutter, plastisol coated finish, Anthracite (RAL 7016)
- B** Eaves & Verge bullnoses Aluminium profiles, PPC finish Anthracite (RAL 7016)
- C** Personnel Access / Escape doorset - Warehouse Galvanised steel, PPC finish matched to cladding, thermally insulated core
- D** Rainwater Goods Gravity fed rain water system with Aluminium rainwater downpipes Colour to match cladding as required.
- E** Glazed Canopy Proprietary glazed canopy over doors



**3 South West Elevation**  
1:200



**4 North East Elevation**  
1:200

C06	Update Issue	BC	15.11.23	BC
C05	Annotations Added	BC	25.09.23	BC
C04	Future Light Box and Unit number locations added, PFC colour updated	BC	21.06.23	BC
C03	Rear Elevation Amended	BC	06.03.23	BC
C02	Construction Issue	JTJ	01.02.23	BC
C01	Contract Issue	JN	23.11.22	BC
Rev	Revision Details	Drawn	Date	Checked

**C4 Projects**  
Quayside, Wildespool Business Park, Stockton Heath, W44 6HL, T: 01925 751 852, E: info@c4projects.co.uk, www.c4projects.co.uk  
Project Management • Architecture • Building Surveying • Cost Consultancy

**Client**  
WUKPG

**Project**  
Vauxhall Industrial Estate Stockport

**Drawing Title**  
Unit 4 - Proposed Elevations

**Status Purpose of Issue**  
**A APPROVED**

**Drawn by** BC **Created** July 21  
**C4 Job no.** 21093 **Scale** As indicated @ A1

**Dwg no.** 21093-C4P-V4-ZZ-DR-A-2101 **Rev** C06

This drawing is © C4 Projects and is not to be copied, reproduced or re-distributed either in whole or in part without the prior written permission of the originator.

The originator shall have no responsibility for any liability, loss, cost, damage or expense arising from or relating to any use of this document other than for its intended purpose on this project.

This drawing shall be read in conjunction with all other relevant drawings, specifications and associated documentation. Any discrepancies, errors or omissions are to be reported to the originator before proceeding with work.

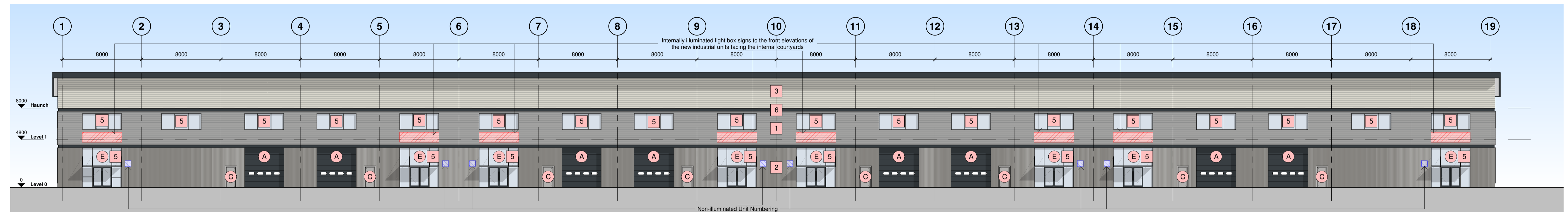
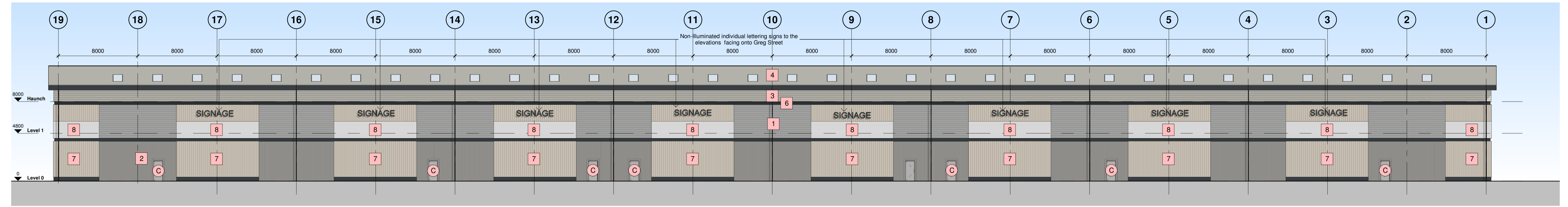
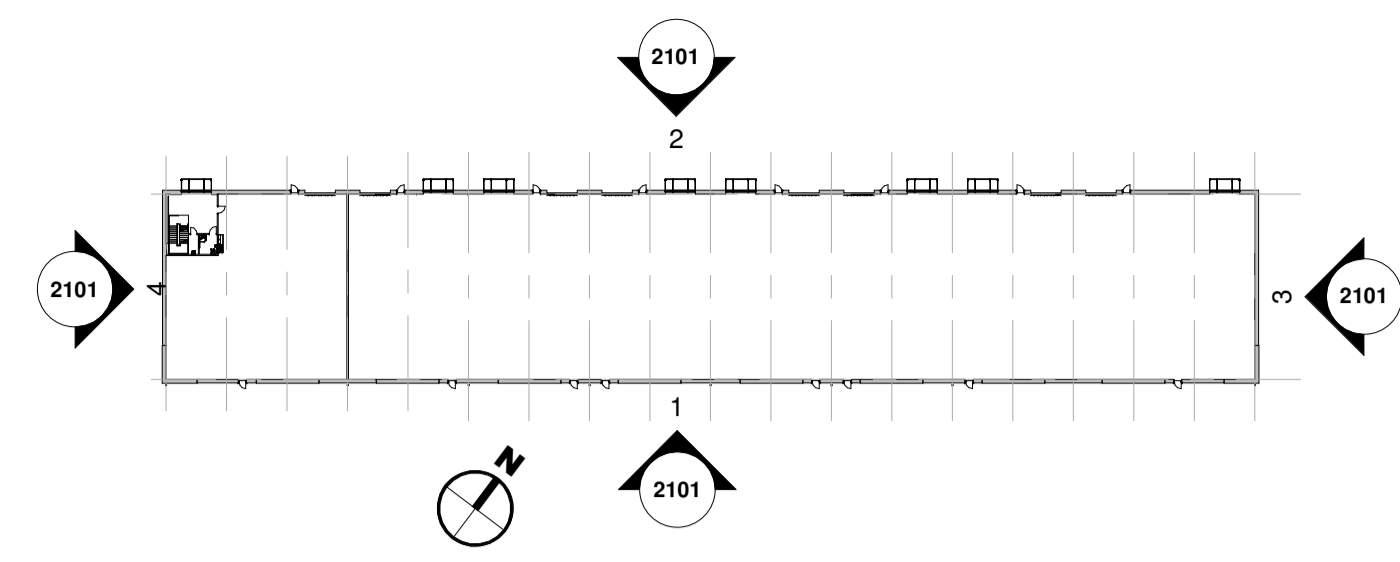
All dimensions are to be checked on site by the contractor prior to proceeding with any work. This drawing shall not be scaled to ascertain any dimensions, work to figured dimensions only.

**DISCLAIMER**  
When this drawing is issued in CAD, it is an uncontrolled version issued for information only, to enable the recipient to prepare their own documents/drawings for which they are solely responsible.

**SOFTWARE INTEROPERABILITY**  
C4 Projects prepared this drawing using Autodesk REVIT Architecture.

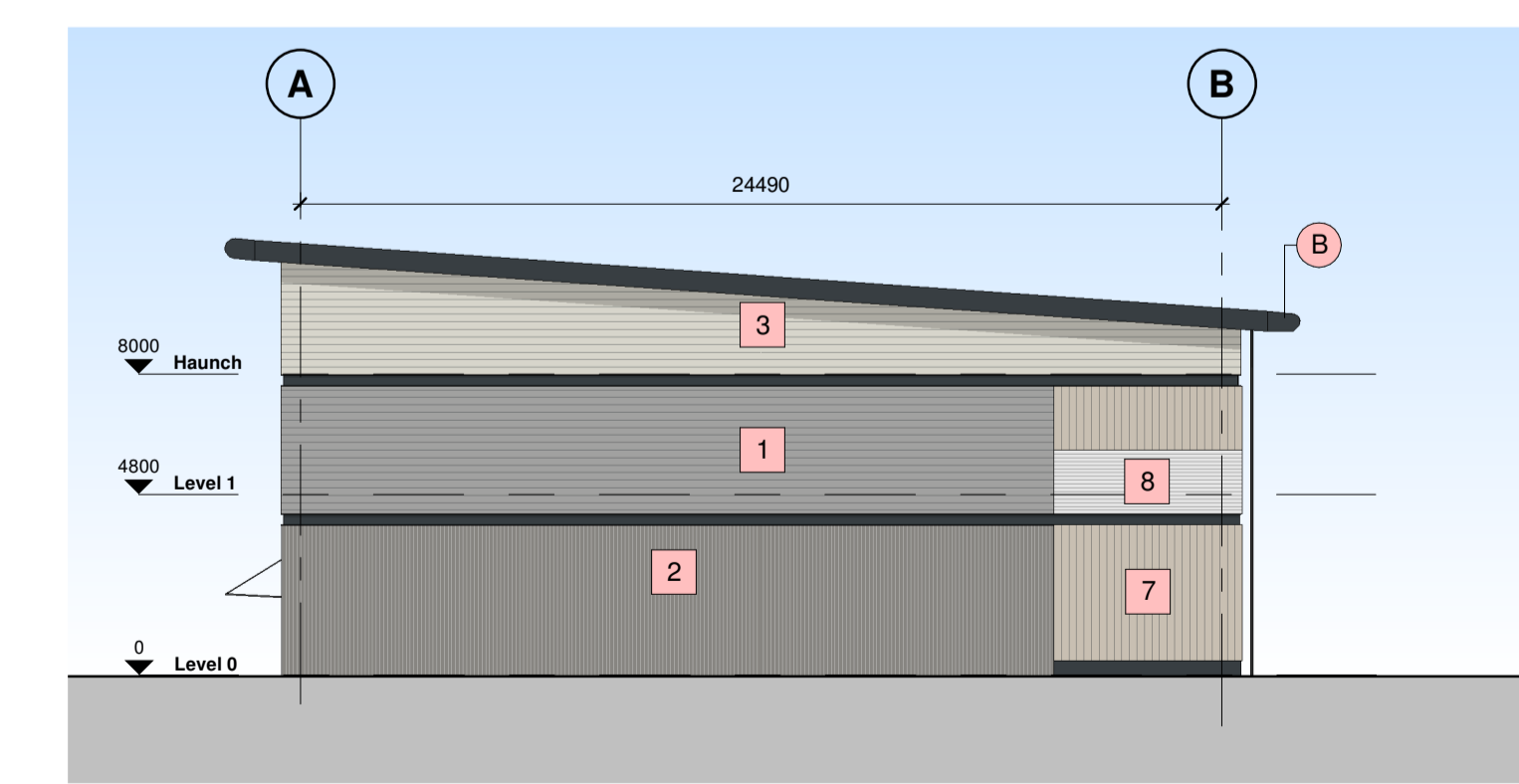
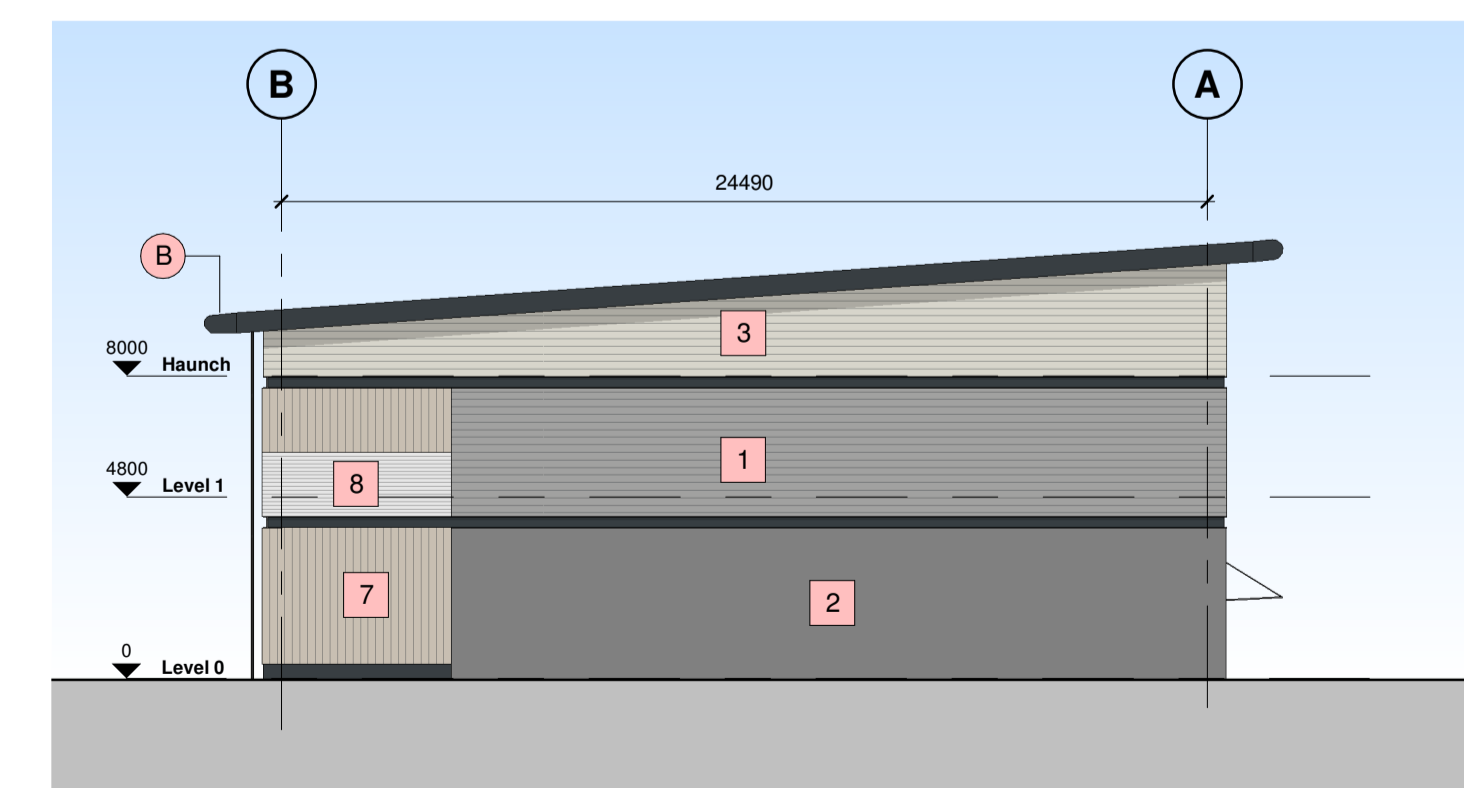
C4 Projects does not accept liability for any loss or degradation of any information held in the drawing resulting from the translation from the original file format to any other file format or from the recipient's reading of it in any other programme.

Hazard Identification		
ref	hazard	date



**Building Fabric Materials Schedule**

- 1 Wall Type 1 - Built-up metal cladding (twin skinned, insulated) Horizontally Laid Mini Sinusoidal Profile - White Aluminium (RAL 9006)
- 2 Wall Type 2 - Built-up metal cladding (twin skinned, insulated) Vertically Laid Trapezoidal Profile - Grey Aluminium (RAL 9007)
- 3 Wall Type 3 - Built-up metal cladding (twin skinned, insulated) Horizontally Laid Mini Sinusoidal Profile - Hamlet (RAL 9002)
- 4 Roof type 1, Built up metal cladding - Trapezoidal Profile - Goosewing Grey (RAL 7038) with 10% integrated GRP rooflights
- 5 Wall Type 4 - Aluminium Curtain Wall stick frame system PPC Anthracite (RAL 7016) framing, double glazed infills (solar control)
- 7 Wall Type 5 - Fibre Cement Cladding Hardie VL Plank - Light Mist
- 8 Wall Type 6 - Translucent Structural Sandwich Panel. Visible light - 20%
- A Operational Door - Level Access Sectional insulated shutter, plastisol coated finish, Anthracite (RAL 7016)
- B Eaves & Verge bullnoses Aluminium profiles, PPC finish Anthracite (RAL 7016)
- C Personnel Access / Escape doorset - Warehouse Galvanised steel, PPC finish matched to cladding, thermally insulated core
- D Rainwater Goods Gravity fed rain water system with Aluminium rainwater downpipes Colour to match cladding as required.
- E Glazed Canopy Proprietary glazed canopy over doors



C06	Update Issue	BC	15.11.23	BC
C05	Annotations Added	BC	25.09.23	BC
C04	Signage to Rear of Units amended	BC	05.07.23	BC
C03	Future Light Box and Unit number locations added. PFC colour updated	BC	21.06.23	BC
C02	Construction Issue	JTJ	01.02.23	BC
C01	Contract Issue	JN	23.11.22	BC
Rev	Revision Details	Drawn	Date	Checked

**C4 Projects**  
Quayside, Widnespool Business Park, Stockton Heath, W44 6HE, t: 01925 751 852 e: info@c4projects.co.uk www.c4projects.co.uk  
Project Management • Architecture • Building Surveying • Cost Consultancy

Client  
**WUKPG**

Project  
Vauxhall Industrial Estate  
Stockport

Drawing Title  
Unit 5 - Proposed Elevations

Status	Purpose of Issue
<b>A</b>	<b>APPROVED</b>
Drawn by	BC Created July 21
C4 Job no.	21093 Scale As indicated @ A1
Dwg no.	21093-C4P-V5-ZZ-DR-A-2101
Rev	C06

This drawing is © C4 Projects and is not to be copied, reproduced or re-distributed either in whole or in part without the prior written permission of the originator.

The originator shall have no responsibility for any liability, loss, cost, damage or expense arising from or relating to any use of this document other than for its intended purpose on this project.

This drawing shall be read in conjunction with all other relevant drawings, specifications and associated documentation. Any discrepancies, errors or omissions are to be reported to the originator before proceeding with work.

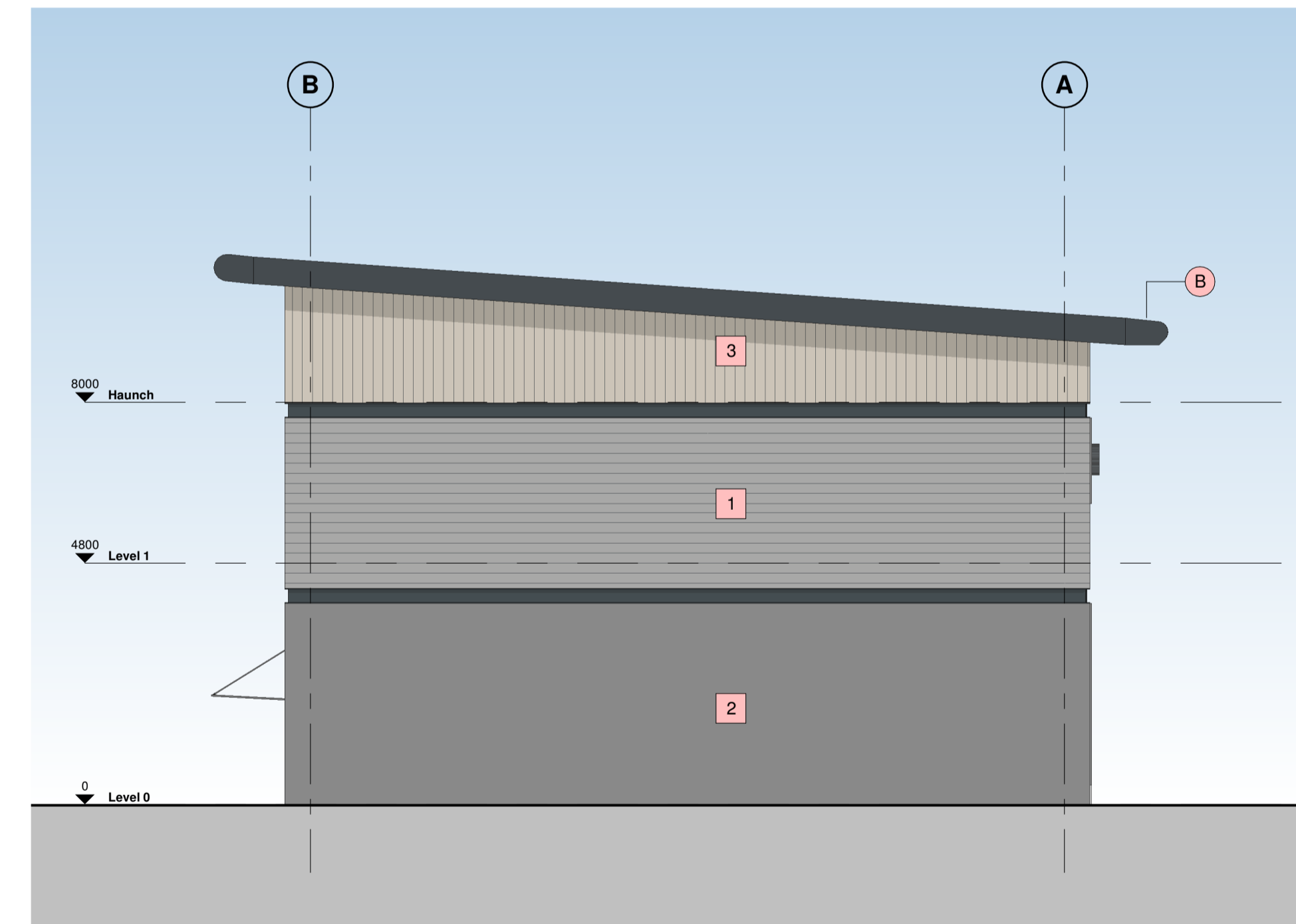
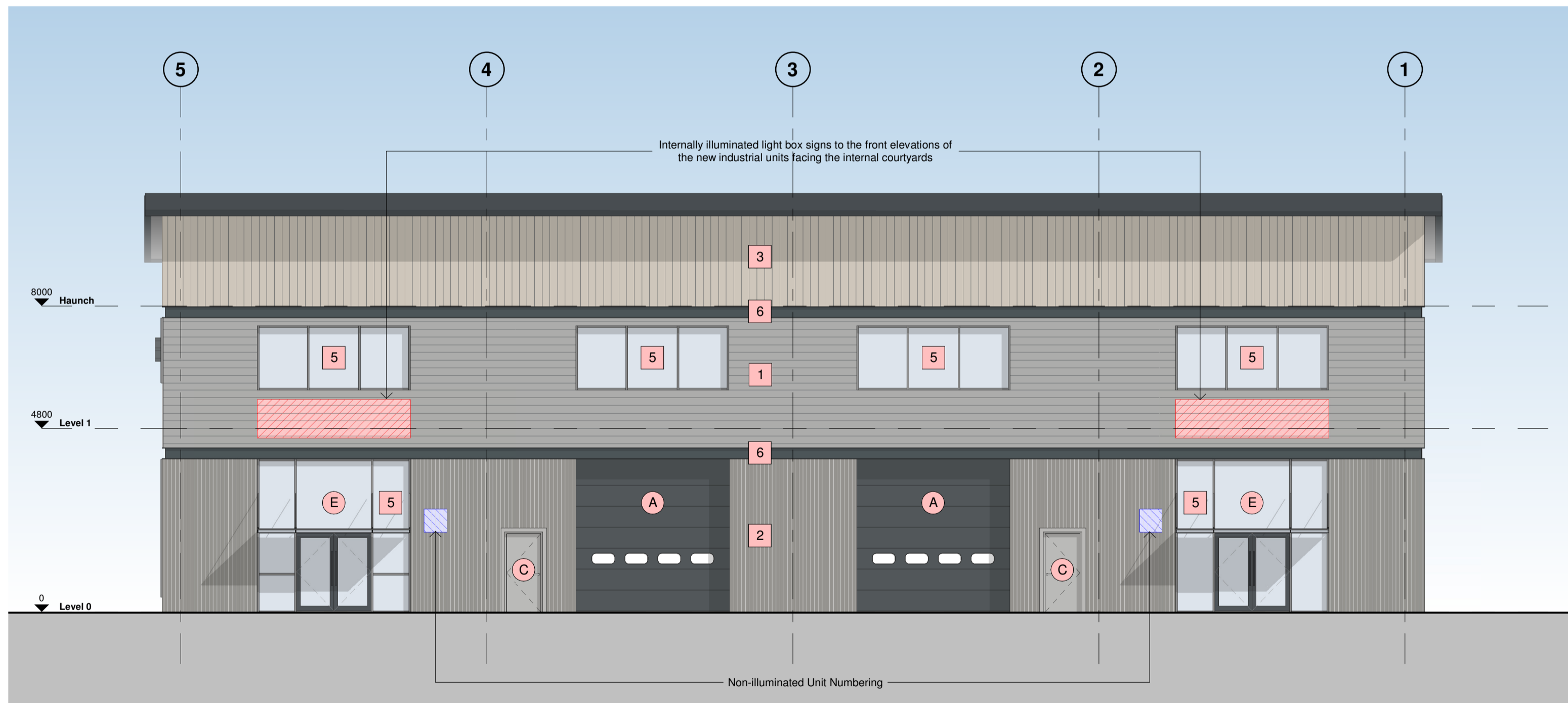
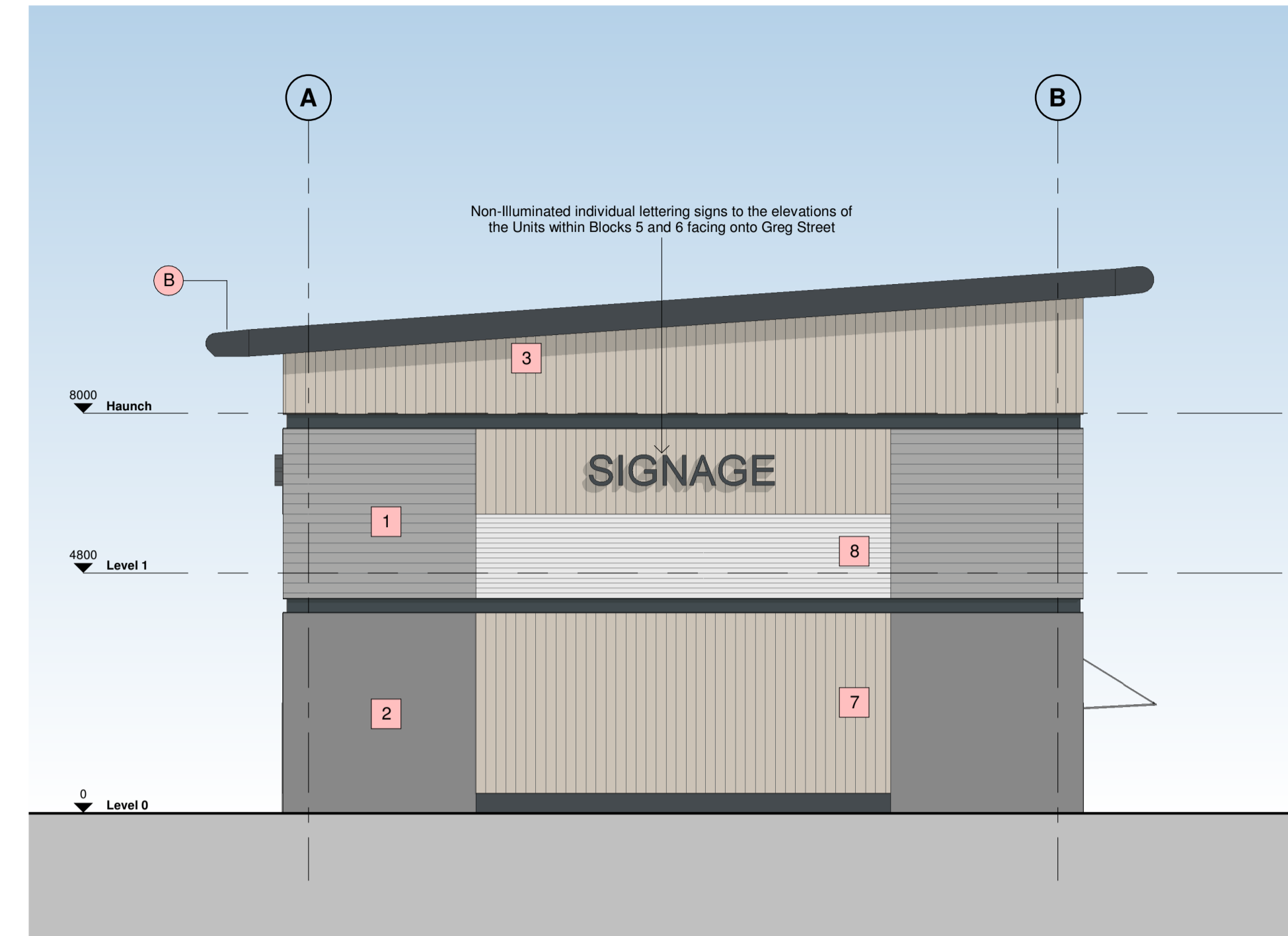
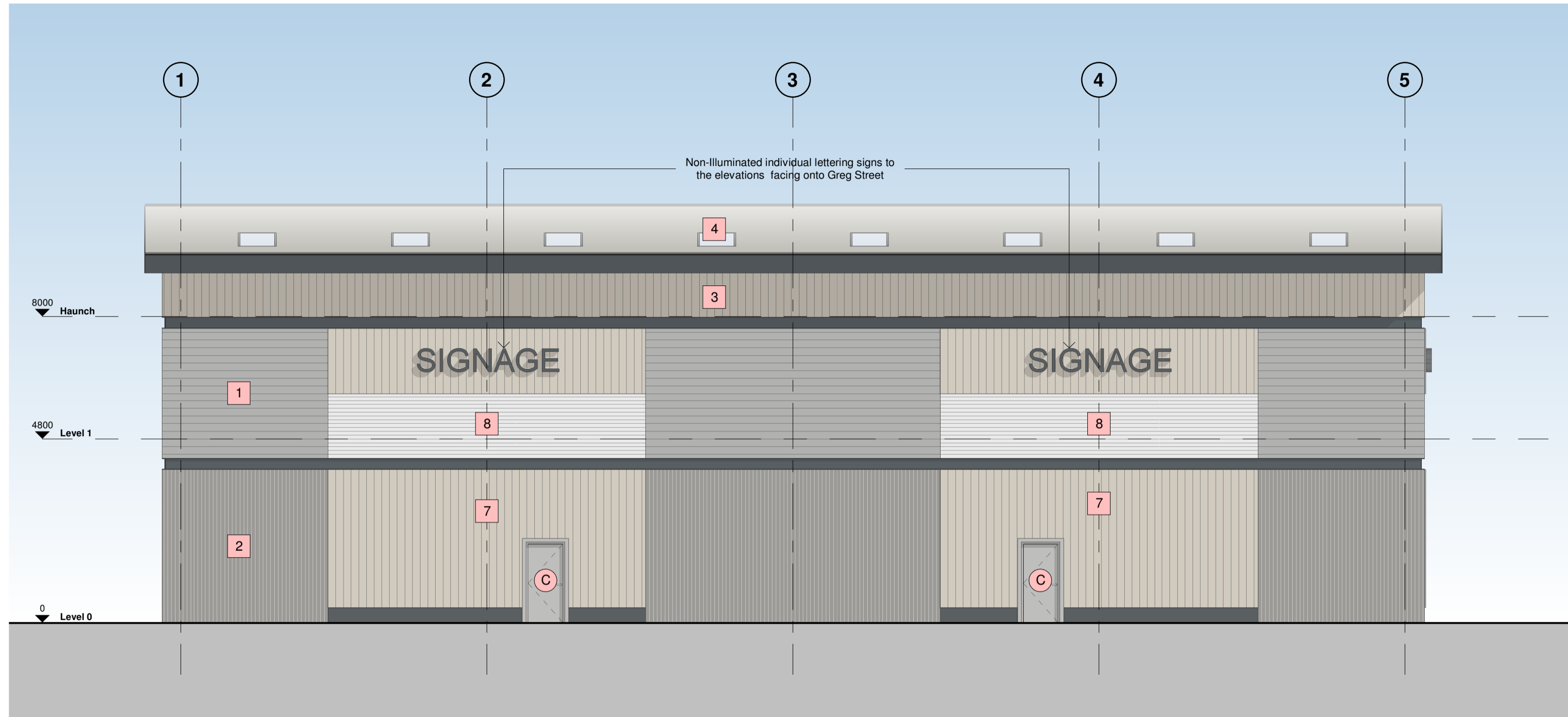
All dimensions are to be checked on site by the contractor prior to proceeding with any work. This drawing shall not be scaled to ascertain any dimensions, work to figured dimensions only.

**DISCLAIMER**  
When this drawing is issued in CAD, it is an uncontrolled version issued for information only, to enable the recipient to prepare their own documents/drawings for which they are solely responsible.

**SOFTWARE INTEROPERABILITY**  
C4 Projects prepared this drawing using Autodesk REVIT Architecture.

C4 Projects does not accept liability for any loss or degradation of any information held in the drawing resulting from the translation from the original file format to any other file format or from the recipient's reading of it in any other programme.

Hazard Identification		
ref	hazard	date



C07	Update Issue	BC	15.11.23	BC
C06	Annotation added	BC	25.09.23	BC
C05	Feature PFC band RAL colour updated	BC	07.07.23	BC
C04	Signage to Rear and side of Units amended	BC	05.07.23	BC
C03	Future Light Box and Unit number locations added, PFC colour updated	BC	21.06.23	BC
C02	Construction Issue	JTJ	01.02.23	BC
C01	Contract Issue	JN	23.11.22	BC
Rev	Revision Details	Drawn	Date	Checked

**C4 Projects**  
Quayside, Walspool Business Park, Stockton Heath, W44 6HL, t: 01925 751 852 e: info@c4projects.co.uk www.c4projects.co.uk

Project Management • Architecture • Building Surveying • Cost Consultancy

Client  
**WUKPG**

Project  
**Vauxhall Industrial Estate Stockport**

Drawing Title  
**Unit 6 - Proposed Elevations**

Status Purpose of Issue  
**A APPROVED**

Drawn by AC Created September 21  
C4 Job no. 21093 Scale As indicated @ A1

Dwg no. 21093-C4P-V6-ZZ-DR-A-2101 Rev C07

**Building Fabric Materials Schedule**

- |  |  |
|--|--|
| 1 Wall Type 1 - Built-up metal cladding (twin skinned, insulated) Horizontally Laid Mini Sinusoidal Profile - White Aluminium (RAL 9006) | A Operational Door - Level Access Sectional insulated shutter, plastisol coated finish, Anthracite (RAL 7016)              |
| 2 Wall Type 2 - Built-up metal cladding (twin skinned, insulated) Vertically Laid Trapezoidal Profile - Grey Aluminium (RAL 9007)        | B Eaves & Verge bullnoses Aluminium profiles, PPC finish Anthracite (RAL 7016)   |
| 3 Wall Type 3 - Built-up metal cladding (twin skinned, insulated) Horizontally Laid Mini Sinusoidal Profile - Hamlet (RAL 9002)          | C Personnel Access / Escape doorset - Warehouse Galvanised steel, PPC finish matched to cladding, thermally insulated core |
| 4 Roof type 1, Built up metal cladding - Trapezoidal Profile - Goosewing Grey (RAL 7038) with 10% intergrated GRP rooflights             | D Rainwater Goods Gravity fed rain water system with Aluminium rainwater downpipes Colour to match cladding as required.   |
| 5 Wall Type 4 - Aluminium Curtain Wall stick frame system PPC Anthracite (RAL 7016) framing, double glazed infills (solar control)       | E Glazed Canopy Proprietary glazed canopy over doors   |
| 7 Wall Type 5 - Fibre Cement Cladding Hardie VL Plank - Light Mist   |  |
| 8 Wall Type 6 - Translucent Structural Sandwich Panel. Visible light - 20%   |  |

