



STOCKPORT
METROPOLITAN BOROUGH COUNCIL

Children and Families Scrutiny Committee

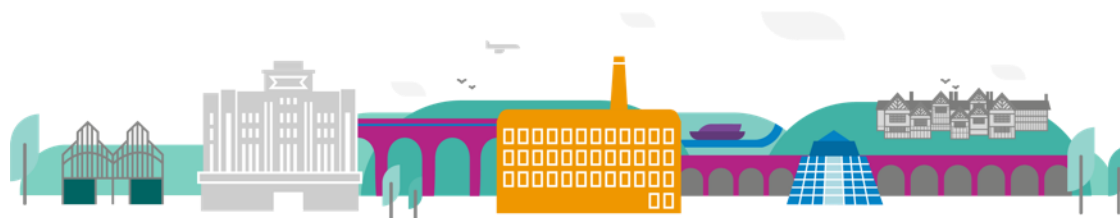
Services for Young People Scrutiny Review

17th October 2023



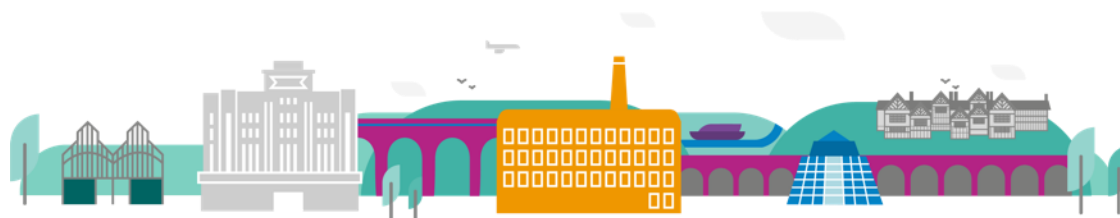
Aim

To understand the youth provision provided without charge and breadth of opportunities for adolescent young people in Stockport



Objectives

1. To understand the demographics of the adolescent population across the borough.
2. To scope and map the provision available delivered via the VCFSE sector and the LA.
3. To understand the infrastructure and connections across the provision.
4. To understand how provision is funded.
5. To identify any areas that would benefit from being strengthened.



Helpful Definitions

- **Targeted Youth Support** - working with specific groups of young people to combat specific issues. Engagement is to educate, inform and divert children & young people from behaviours that could place them at risk. This includes school-based services and a wide range of community projects, including sports activities.
- **Outreach Youth Work** - aims to engage with young people in the local community. Youth workers will inform young people of services that exist in their area and encourage them to use the services and engage in centre-based activities.
- **Detached Youth Work** - engagement with young people who do not access building-based youth provision. Engagement takes place in young people's own environment which is generally on the street or other public spaces. The aim is to **empower** young people to have positive voices in their communities and informally **educate** them through young person led activities.



Demographics of the adolescent population in Stockport



Population - Age

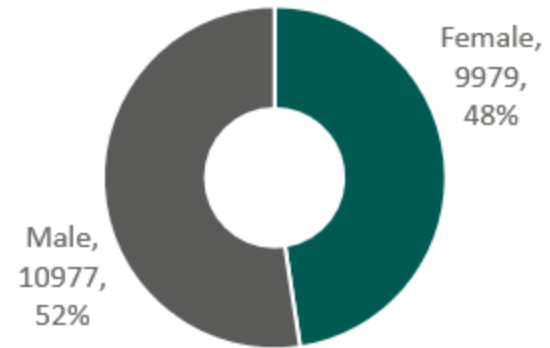
Stockport Population (Census 2021)		294776
Age Groups	Value	Percent Total Population
0-64 yrs.	235501	79.9%
65 + yrs.	59275	20.1%
0-18 yrs.	65165	22.1%
11-16 yrs.	20956	7.1%
11-16 yrs. Percent of 0-18 yrs.		32.2%

Population - Gender

Stockport Population



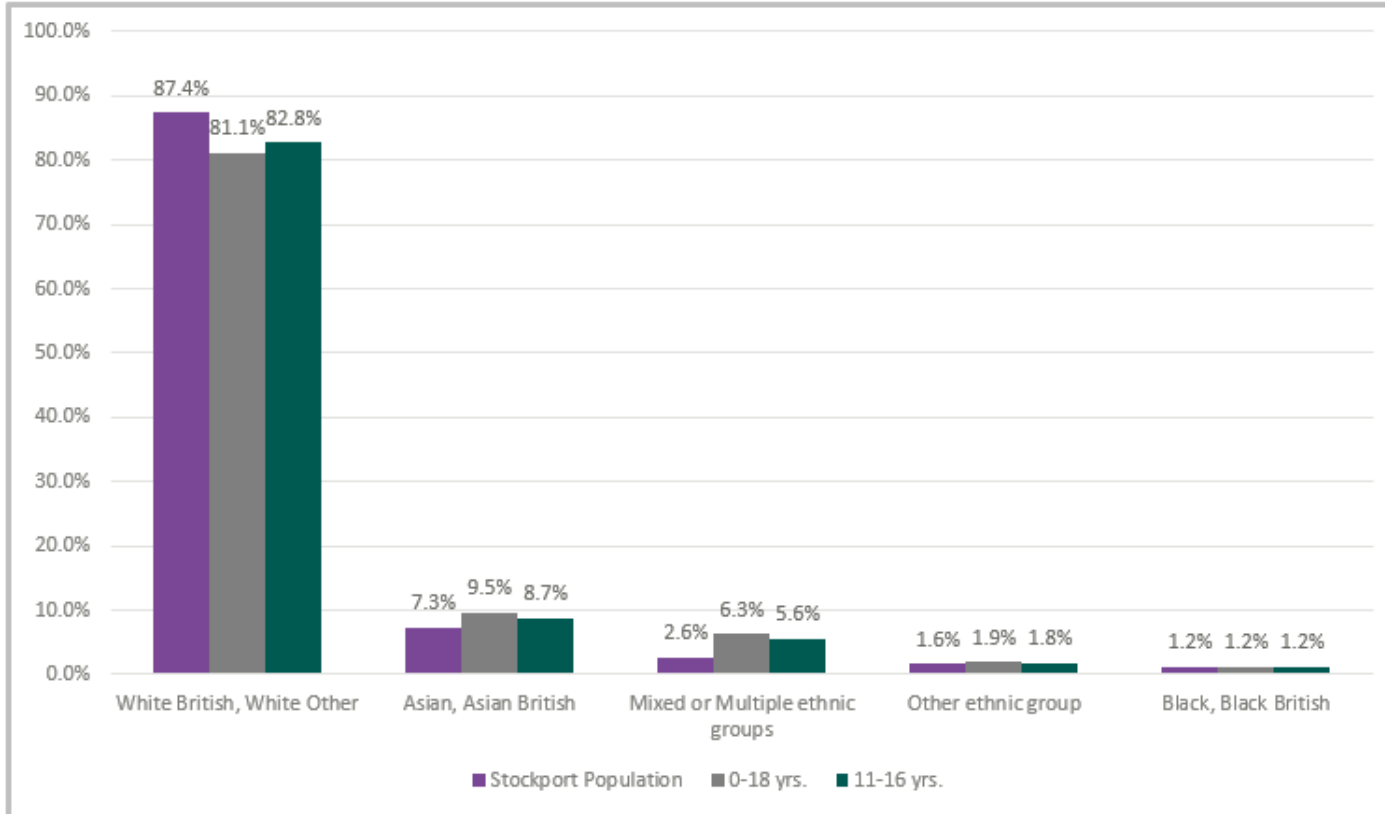
Gender 11-16 yrs.



Gender 0-18 yrs.



Population – Ethnicity

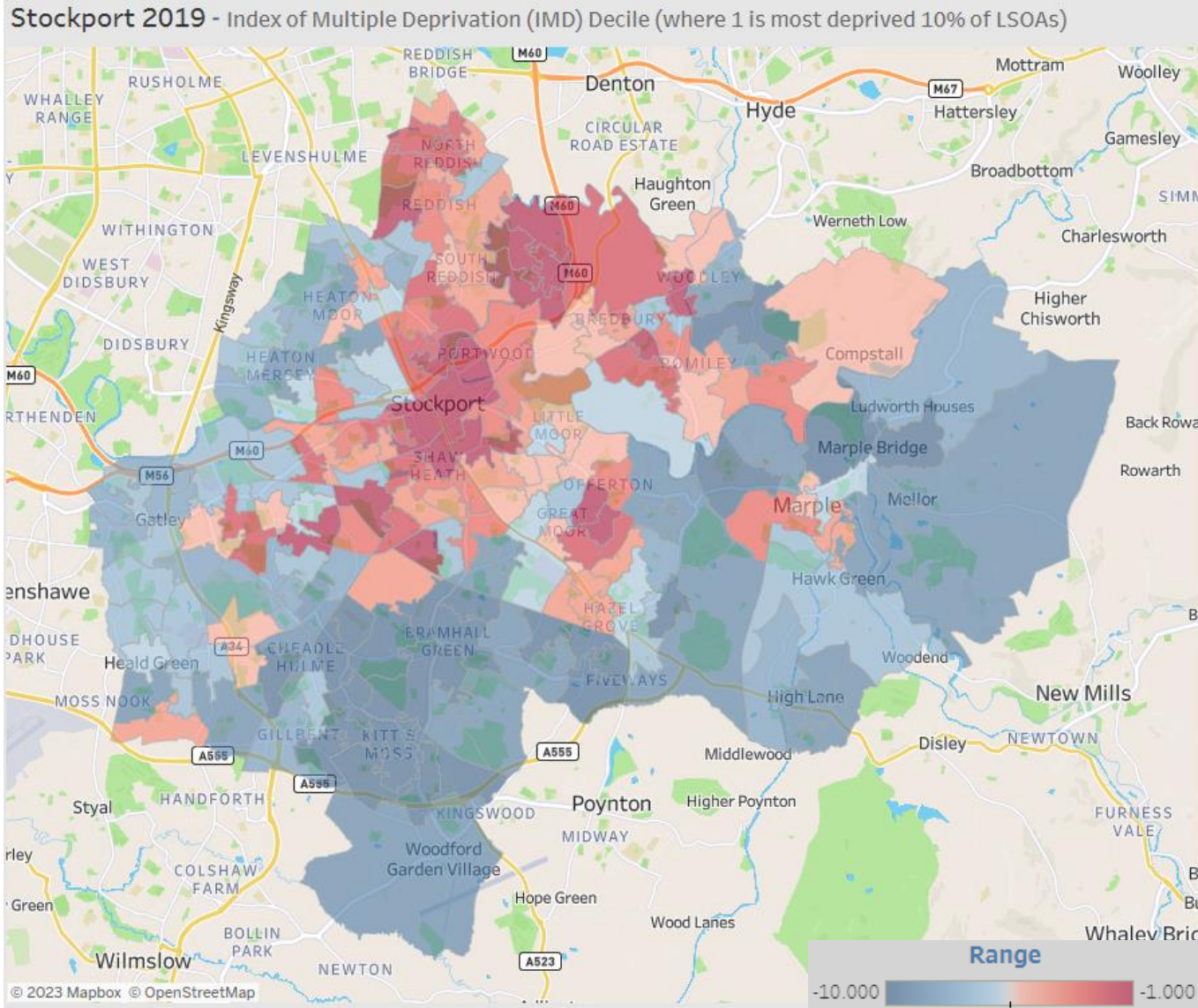


Ethnicity	Stockport Population	0-18 yrs.	11-16 yrs.
White British, White Other	87.4%	81.1%	82.8%
Asian, Asian British	7.3%	9.5%	8.7%
Mixed or Multiple ethnic groups	2.6%	6.3%	5.6%
Other ethnic group	1.6%	1.9%	1.8%
Black, Black British	1.2%	1.2%	1.2%

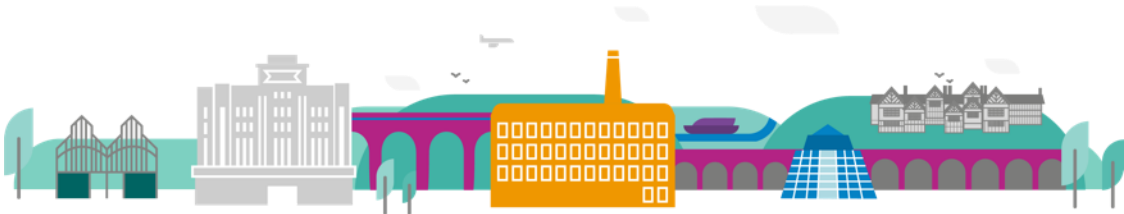
Population – Disability Status

Disability Status	Age	Count	Percentage of 0-19 cohort
Non-disabled	Under 1	3,150	4.7%
Disabled; limited a lot	Under 1	15	0.0%
Disabled; limited a little	Under 1	15	0.0%
Non-disabled	1 to 4	12,965	19.3%
Disabled; limited a lot	1 to 4	180	0.3%
Disabled; limited a little	1 to 4	245	0.4%
Non-disabled	5 to 9	16,895	25.1%
Disabled; limited a lot	5 to 9	465	0.7%
Disabled; limited a little	5 to 9	700	1.0%
Non-disabled	10 to 14	16,280	24.2%
Disabled; limited a lot	10 to 14	615	0.9%
Disabled; limited a little	10 to 14	1,030	1.5%
Non-disabled	15 to 19	12,870	19.1%
Disabled; limited a lot	15 to 19	680	1.0%
Disabled; limited a little	15 to 19	1,215	1.8%
Non-disabled	0 to 19	62,160	92.3%
Disabled; limited a lot	0 to 19	1,955	2.9%
Disabled; limited a little	0 to 19	3,205	4.8%

Indices of Multiple Deprivation

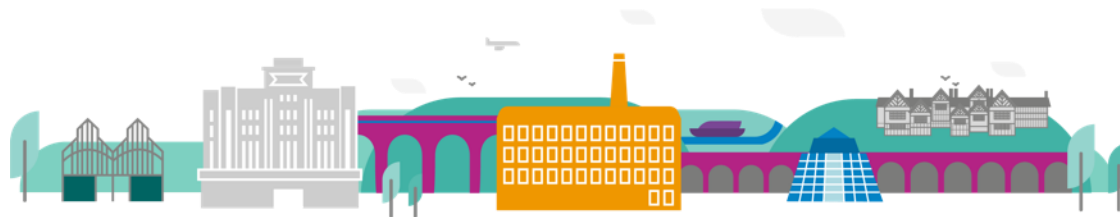


Provision



VCSFE Provision

- We have sent out a form to gather data on the VCSFE free offer for adolescents.
- Currently we have had 12 responses and will continue to seek more. The information provided looks at where the provision takes place, who is accessing it, and when it is available.
- Information has been provided on the Health Activities Fund (HAF) offer accessible to adolescents.
- Some reduced response could indicate that some of the provisions available to young people have a cost attached (e.g. scouts, football).



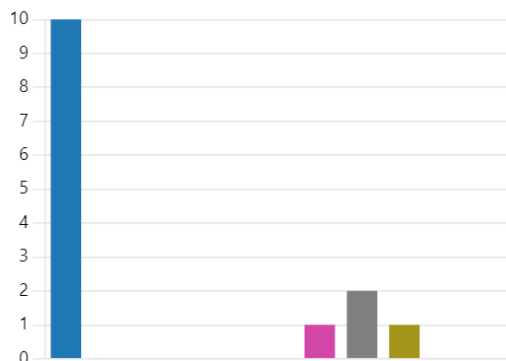
VCSFE Provision – Uptake

- With the limited response this is currently the uptake of the free provisions:

6. Where do the young people live who attend your service? (check all that apply)

[More Details](#)

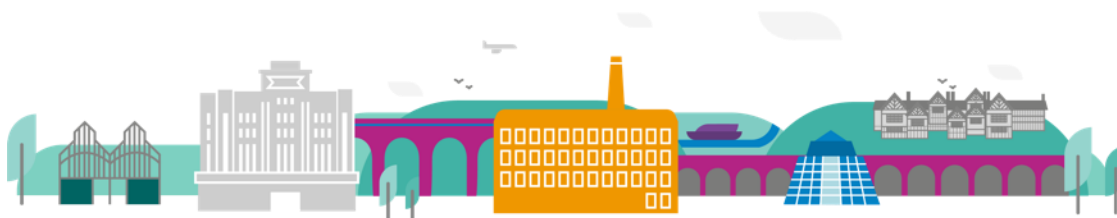
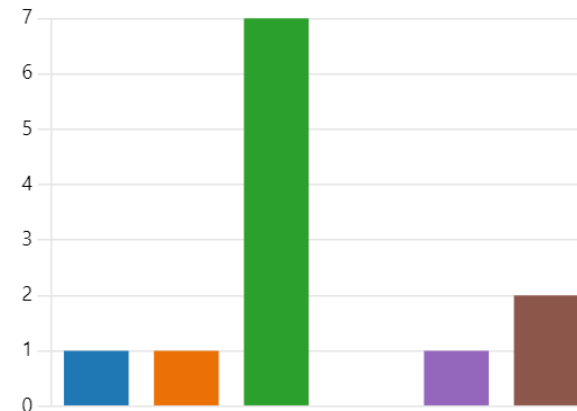
● All over Stockport	10
● Adswood	0
● Bramhall	0
● Bridgehall	0
● Brinnington & Werenth	0
● Cheadle	0
● Edgeley	1
● Heatons & Reddish	2
● Lancashire Hill	1
● Marple	0
● Offerton, Great Moor, Hazel Gro...	0



9. On average, how many young people attend each session?

[More Details](#)

● 1-5	1
● 6-10	1
● 11-15	7
● 16-20	0
● 21-25	1
● 25+	2



Secondary Schools – Provision

There is a fabulous range of opportunities offered within our secondary schools throughout the borough. Each school has a unique offer and here are examples of a wide scope of this offer.



Sporting activities; football, rugby, cross country, tennis, table tennis, badminton and netball alongside dodgeball, cheerleading, skittles, Zumba, futsal, chess and boccia.



Wide ranging dance, drama and musical opportunities with lessons in classical instruments, popular music, DJ club and a ukulele club.



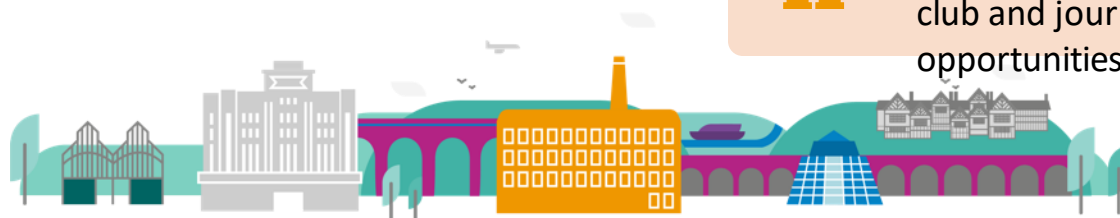
A vast array of additional academic classes such as French, Spanish, Japanese, science, maths or homework clubs.



Community and fundraising projects alongside school councils, an eco-council and upcycling club.



There are reading clubs, a Bake -Off club, craft club and a Dungeons and Dragons club! Debating societies, young reporters club and journalism club are just a few more of the plethora of opportunities within our schools for our young people.



Other Public Sector Provision

- Stockport Homes – under their foundation arm they have one member of staff who provides some targeted work in schools.
- Stockport Youth Justice Service - Targeted Youth Support Service provides diversionary holiday activities for young people open to the service and a very full school programme delivering such sessions as knife crime, ASB, ESafety.
- Stockport Council fund:
 - Care Leavers Forum, supported by Pure Insight
 - Autism Ambassadors
 - Stockport Action Youth Speakers (SAYS, forum for young people with additional needs and disabilities)
 - Youth Council
 - SK Inc, Stockport's Children in Care Council
 - L!sten, delivered by PIE and Autisk



Infrastructure and Connections Across the Provisions

- Equity Networks are established (they are beyond adolescent provisions) and provide a link to many organisations across the borough. There has been a request made for their structure, reach and membership.



How is Provision Funded

- **Funding models** :

- There are no set funding models
- The majority of the VCFSE is short term based on bids to various funding bodies.
- Many funding sources require a 'new and innovative' service which means continuation of current provisions can be at risk
- HAF – DfE fund for activities during school holidays. Grant funding due to end March 2024

- **Funding sources:**

- The DfE funds the HAF provision £873,280 per academic year
- The Household Support Fund (HSF) also provides £175,000 per academic year to offer similar support during half term holidays and food parcels at Christmas
- Greater Manchester funding - e.g. Standing Together
- Various national opportunities such as the National Lottery

- **Potential risks** :

- Current risks identified by providers includes the lack of long-term funding, so they are constantly having to apply for more
- DfE providing no further funding to the HAF programme after March 2025
- Household Support Fund providing no further funding after March 2024
- Current providers unable to source other funding to continue to run following departure of HAF/ HSF funding
- Unable to source SEND specific providers (eg, Autisk are currently our only consistent provider of SEND specific clubs in Stockport. Trials are being held with other clubs and provisions
- Current funding through HAF in comparison to the number of children on income-based FSM is not equitable. The breakdown of budget equates to £3 per child per day which is not enough to offer every child on FSM a place.



Areas of Strength

- Networks are growing, being utilised as a place to share information and identify joint funding opportunities.
- Relationships across the sector and public services are developing and growing.
- Young people who attend groups report feeling safe and able to be themselves.
- There are provisions which are inclusive to young people with additional needs and specific protected characteristics.
- Listen, Stockport's Youth Alliance is developing and provides a space for young people to share their experiences and understand their needs.





STOCKPORT
METROPOLITAN BOROUGH COUNCIL



APPENDICES 1 – List of Known Youth Providers

- RTime
- PIE
- Make a Difference
- Autisk
- Cherry Tree Project
- BYouth
- Groundwork Trust
- Re:dish
- Proud Trust
- Marple Youth Club
- CeraCycloan
- Startpoint
- Stockport County Foundation Trust
- Stockport County Community
- Skylight
- EAICO
- Ebony and Ivory



APPENDICES 2 – Interactive Map

RTime are attempting to develop an interactive map of youth services in Stockport:

<https://www.google.com/maps/d/u/2/edit?mid=1H00N9BxSc0ISFXtNE5PA4ZZR67kY9XI&usp=sharing>

APPENDICES 3 – School website addresses

Bramhall High School	https://www.bhsweb.co.uk/
Castle Hill High School	https://www.castlehill.stockport.sch.uk/
Cheadle Hulme High School	https://www.chhs.org.uk/
Harrytown Catholic High School	https://www.harrytownschool.org/
Hazel Grove High School	https://www.hazelgrovehigh.co.uk/
Heaton School	https://www.heaton.stockport.sch.uk/
Highfields College	https://www.highfieldscollege.org.uk/
Laurus Cheadle Hulme	https://www.laurusheadleulme.org.uk/
Marple Hall School	https://www.marplehall.stockport.sch.uk/
Moat House School	https://www.moathouse.stockport.sch.uk/

APPENDICES 4 – School website addresses

Pendlebury Centre	https://pendlebury.stockport.sch.uk/
Priestnall School	https://www.priestnallschool.org.uk/
St. Anne's RC Voluntary Academy	https://www.stannes.academy/
St. James' Catholic High School	https://www.stjamesheadle.co.uk/
Stockport Academy	https://www.stockport-academy.org/
Stockport School	https://stockportschool.net/
The Kingsway School	https://thekingswayschool.com/
Werneth School	https://wernethschool.com/
Windlehurst School	https://www.windlehurst.stockport.sch.uk/home