

HIGH PEAK ARCHITECTS

13-15 Market Street, Whaley Bridge, High Peak, Derbyshire SK23 7AA
 Tel: 01663 719717 Fax: 01663 719212 Email: hpa@highpeakarch.com

Werneth Hall Hay Barn
Cowlishaw Road, Romiley

Location Plan

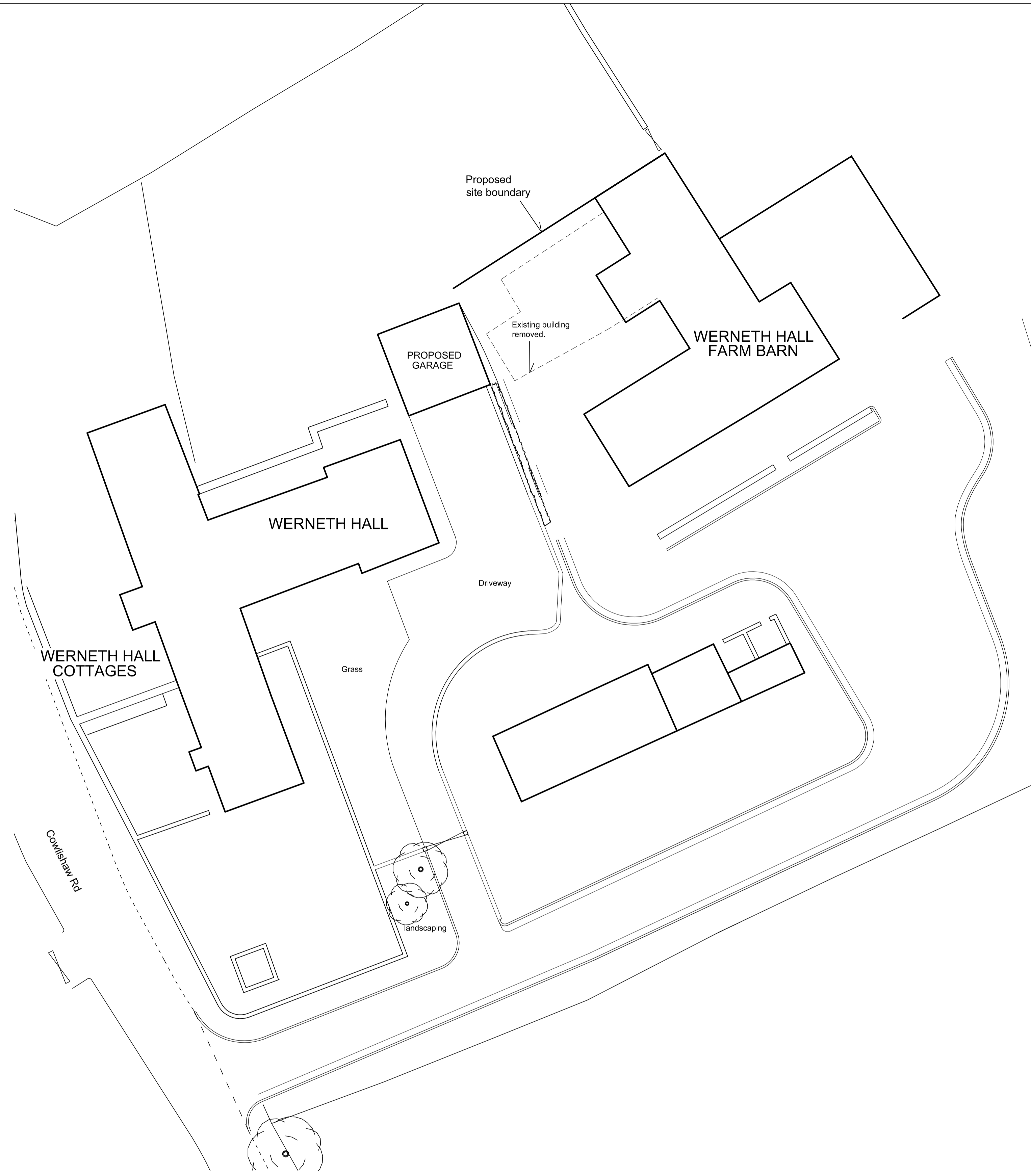
1008.01

Scale: 1:2500

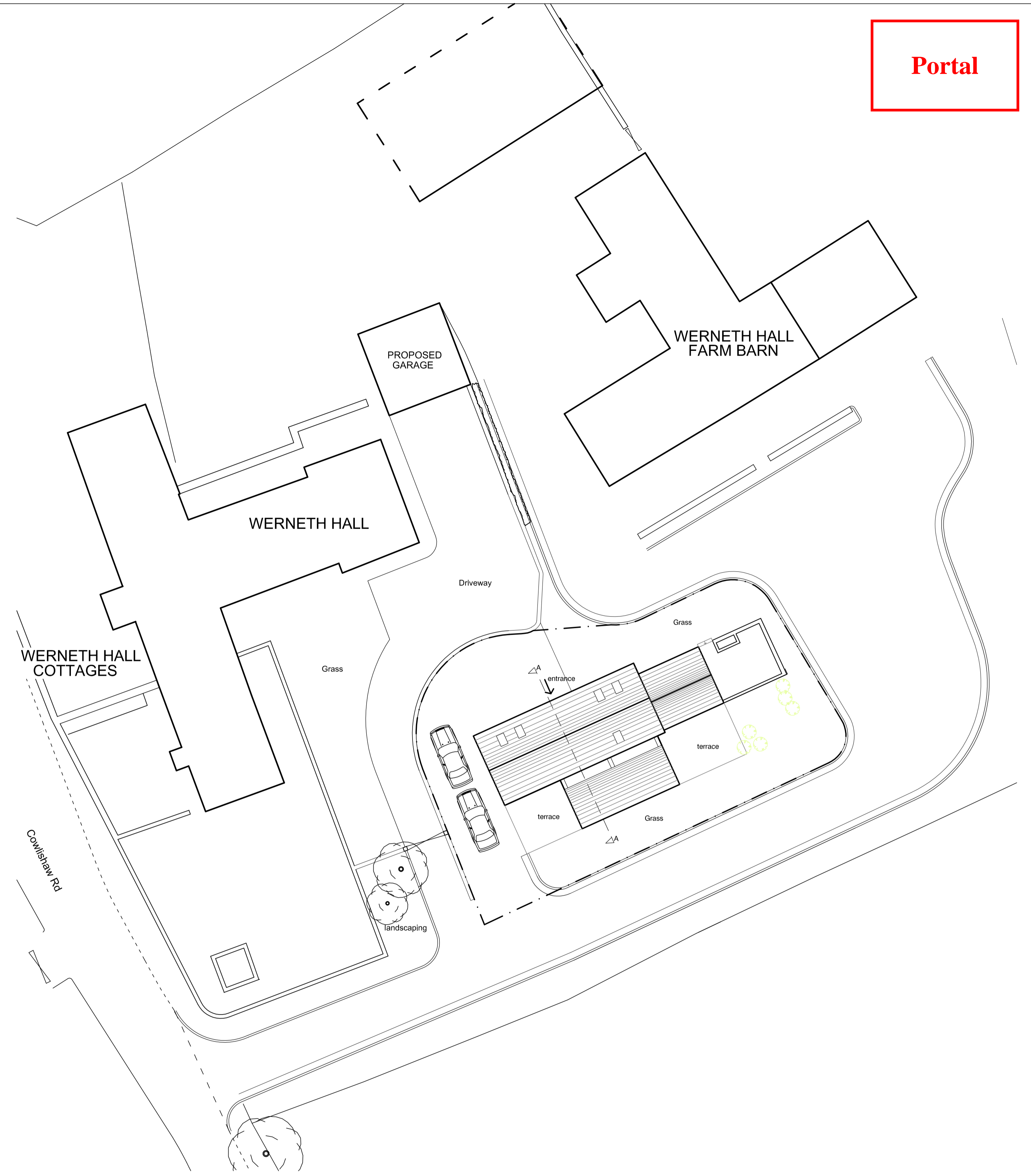
Date: December 2010

DO NOT SCALE OFF THIS DRAWING

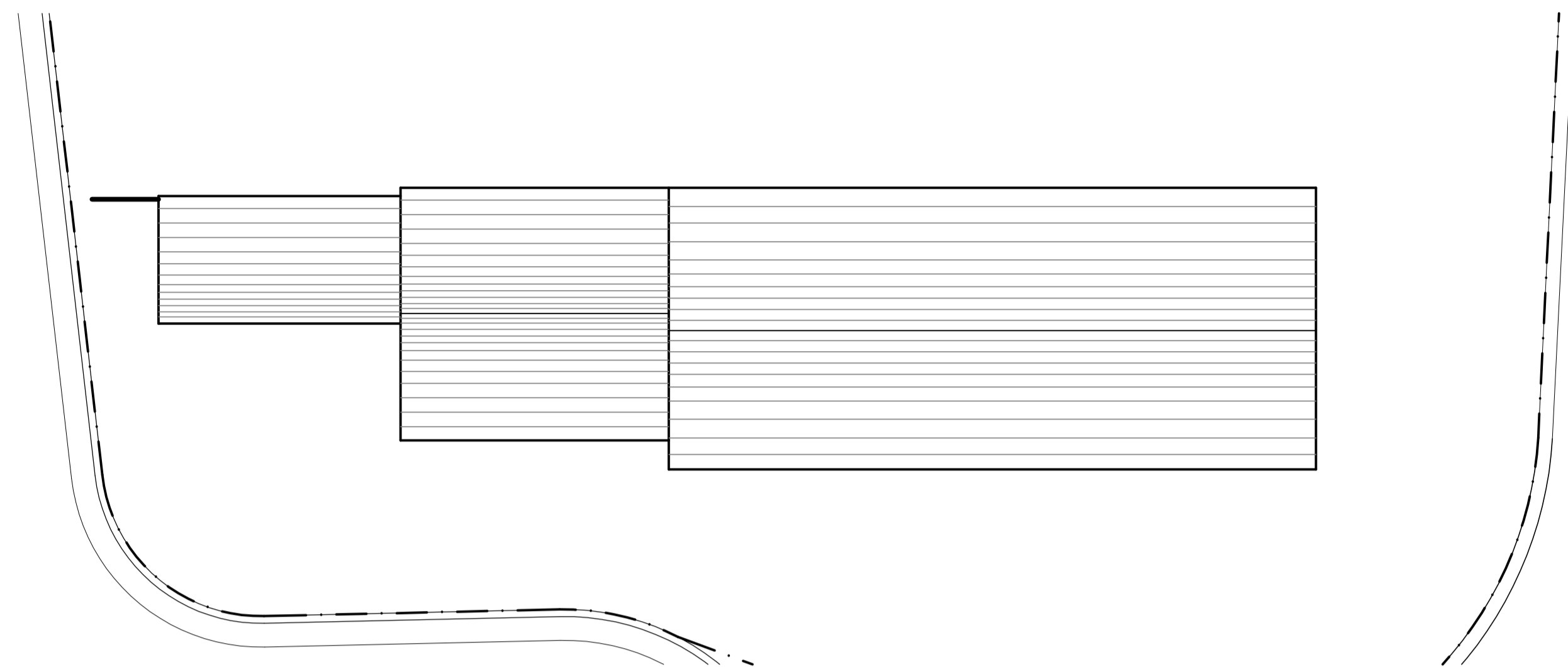
Rev:



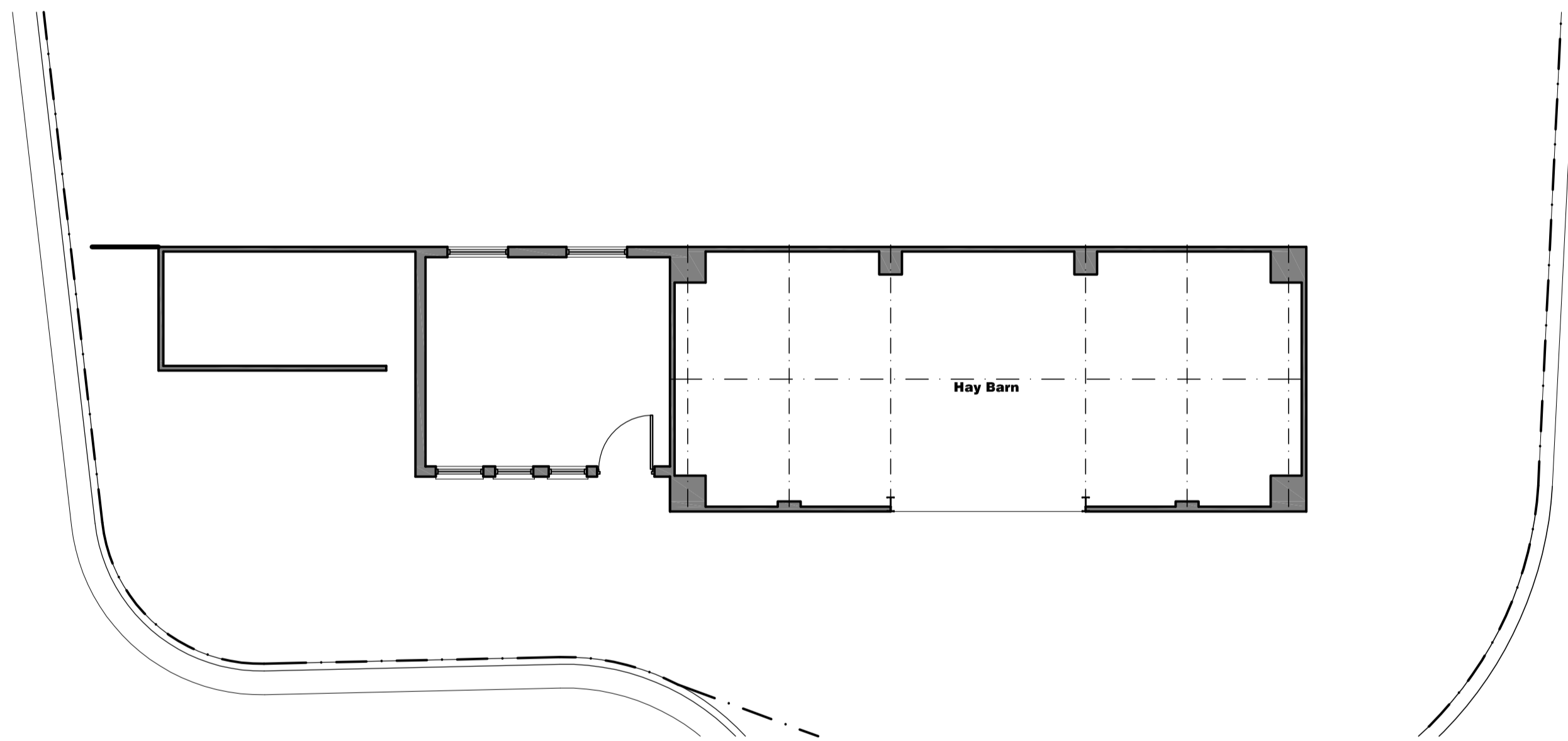
Existing Site Plan



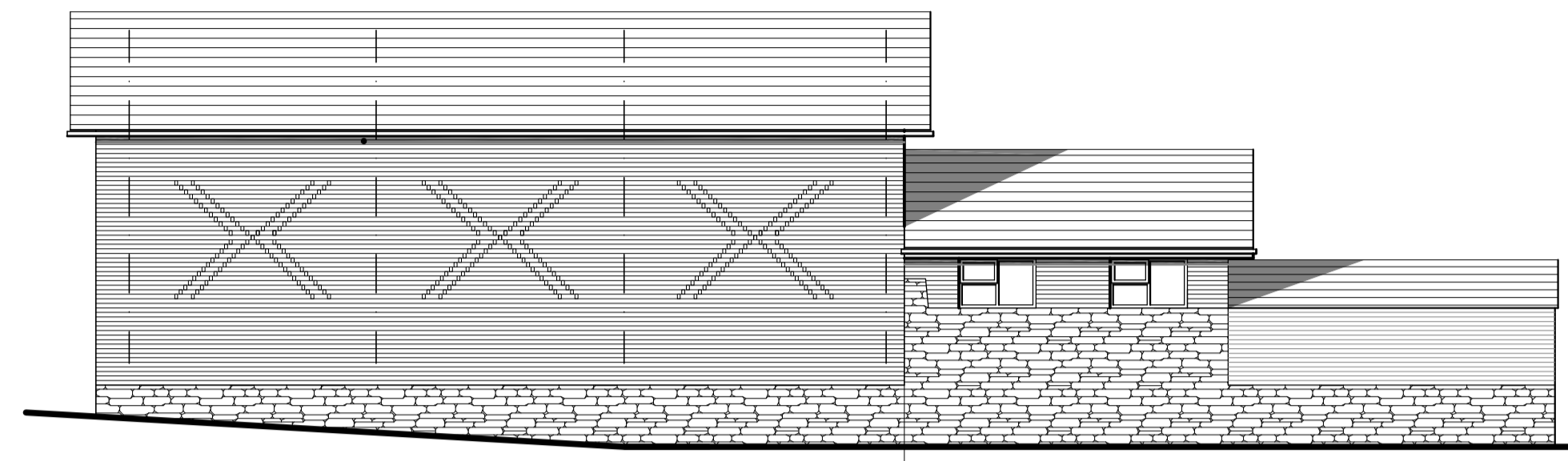
Proposed Site Plan



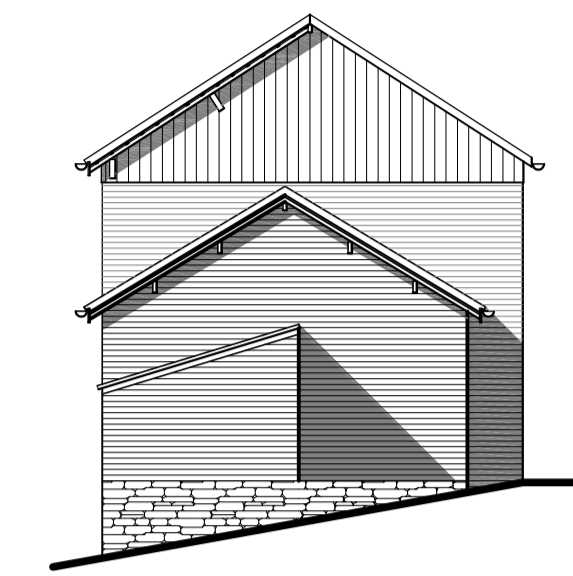
Roof Plan



Ground Floor Plan



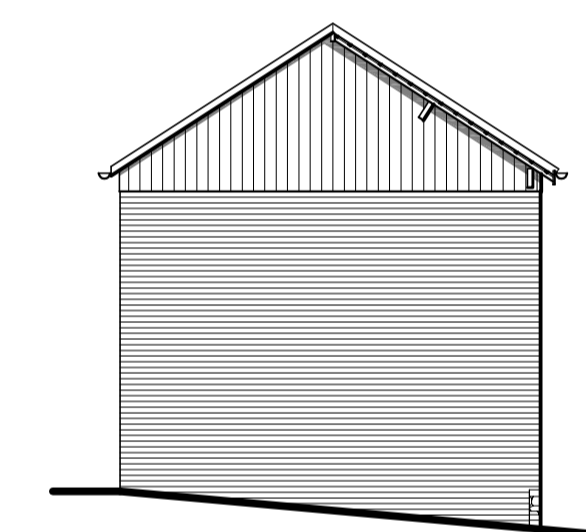
South facing Elevation



West facing Elevation



North facing Elevation



East facing Elevation



HIGH PEAK ARCHITECTS

13-15 Market Street, Whaley Bridge, High Peak, Derbyshire SK23 7AA
Tel: 01663 719717 Fax: 01663 719212 Email: hpa@highpeakarch.com

Werneth Hall Hay Barn
Cowlshaw Road, Romiley

Existing plans and elevations

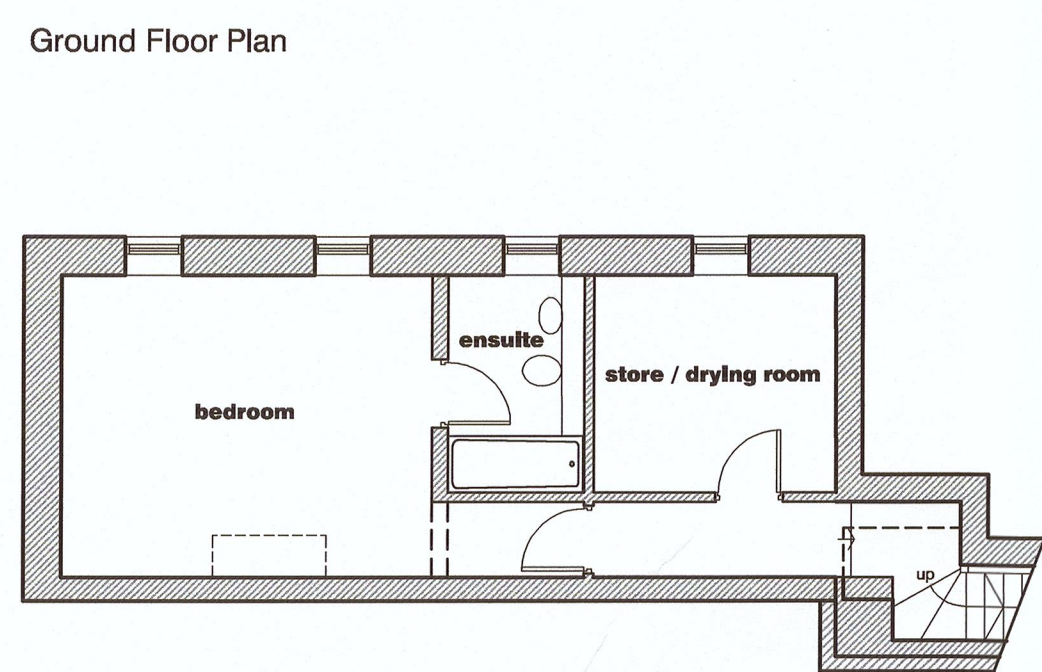
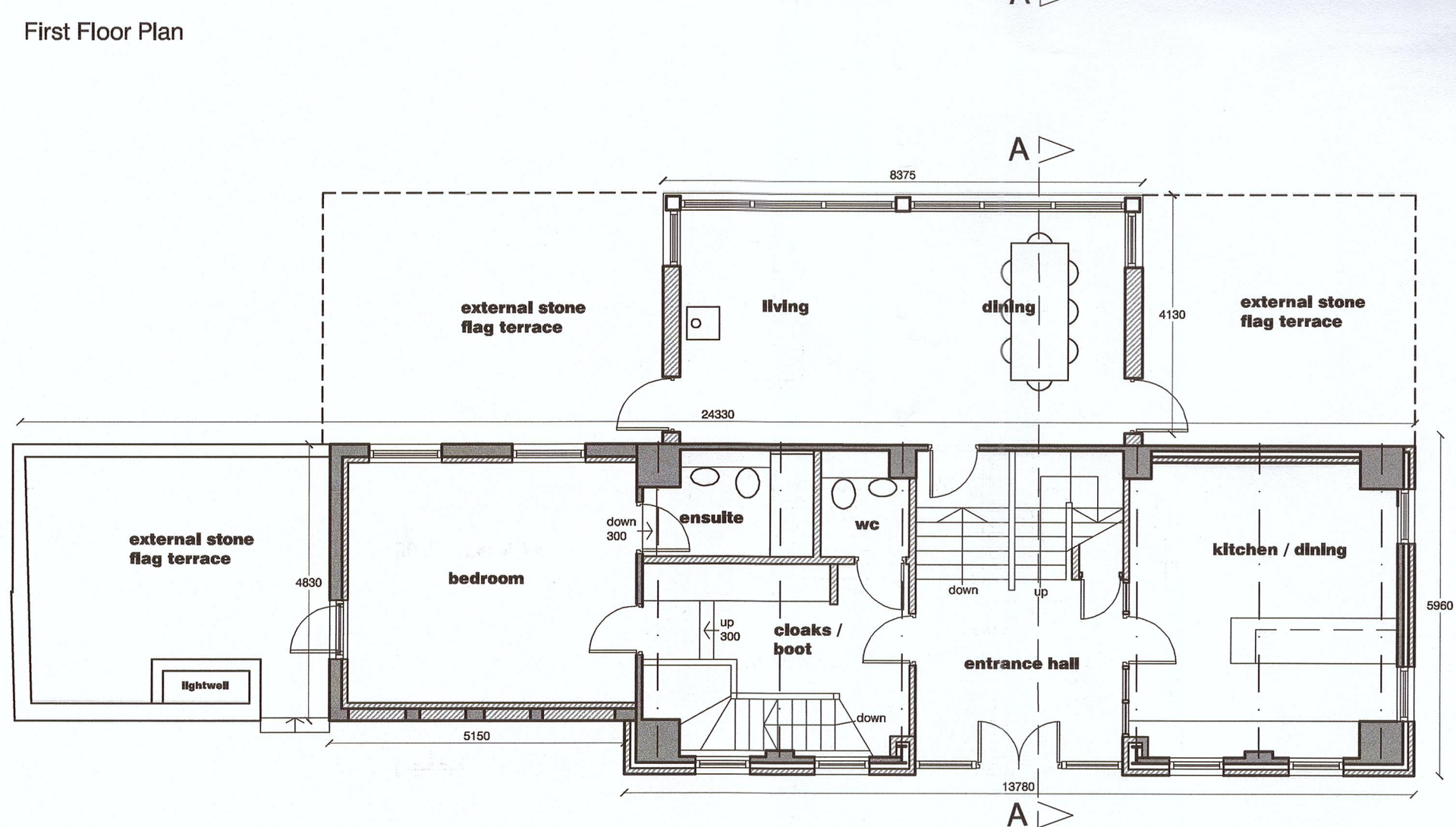
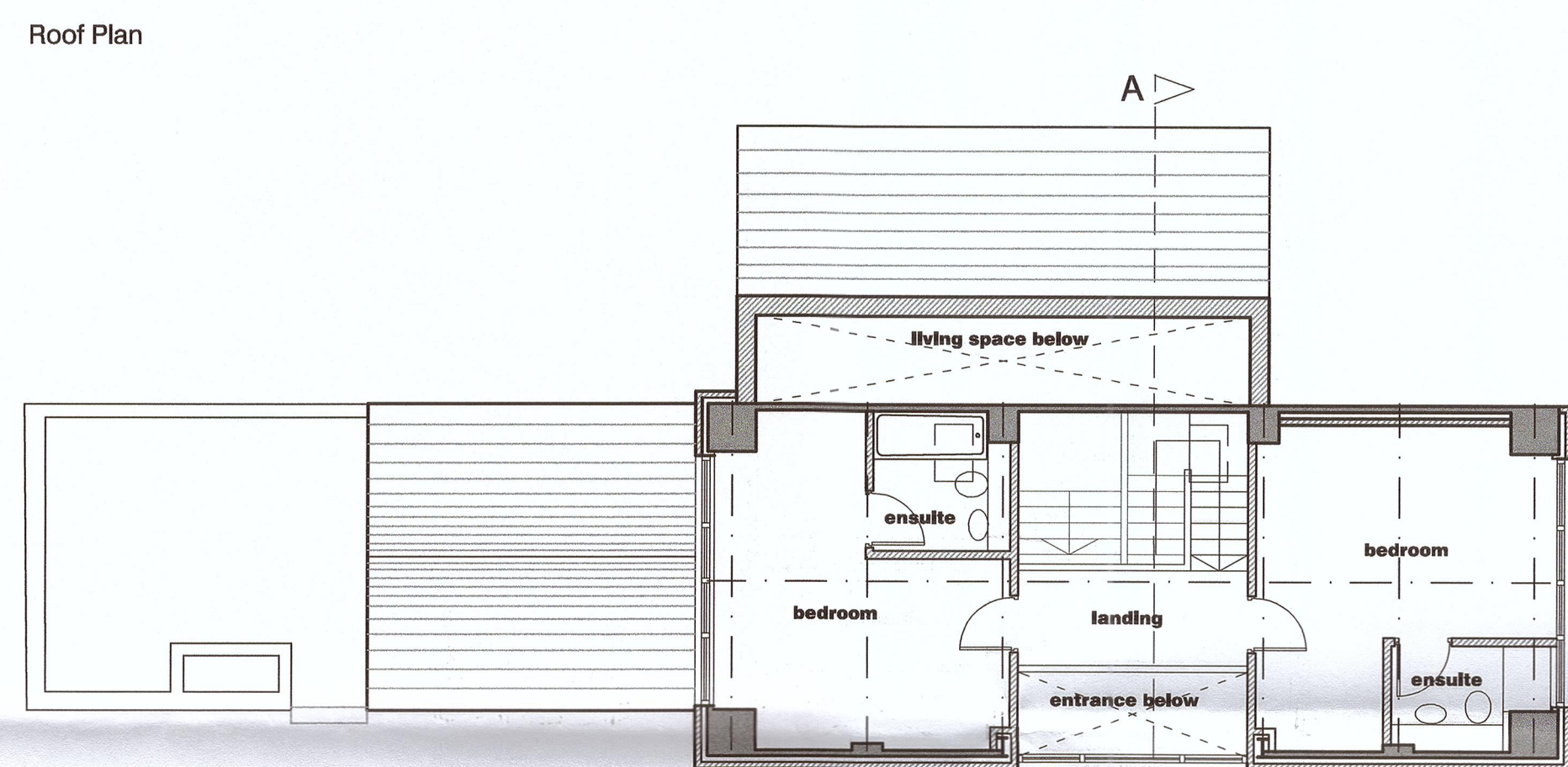
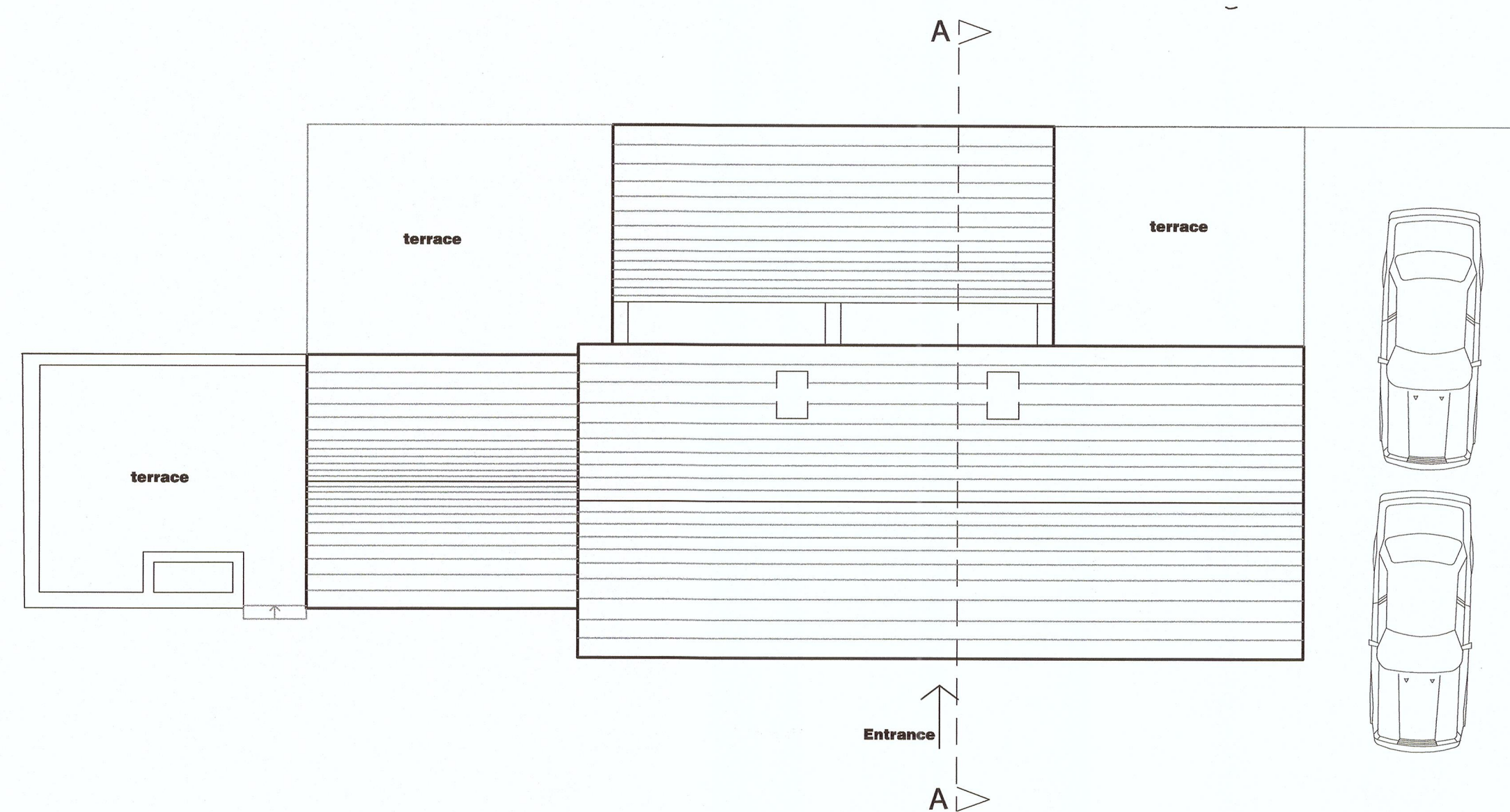
1008.03

Scale: 1:100@A1

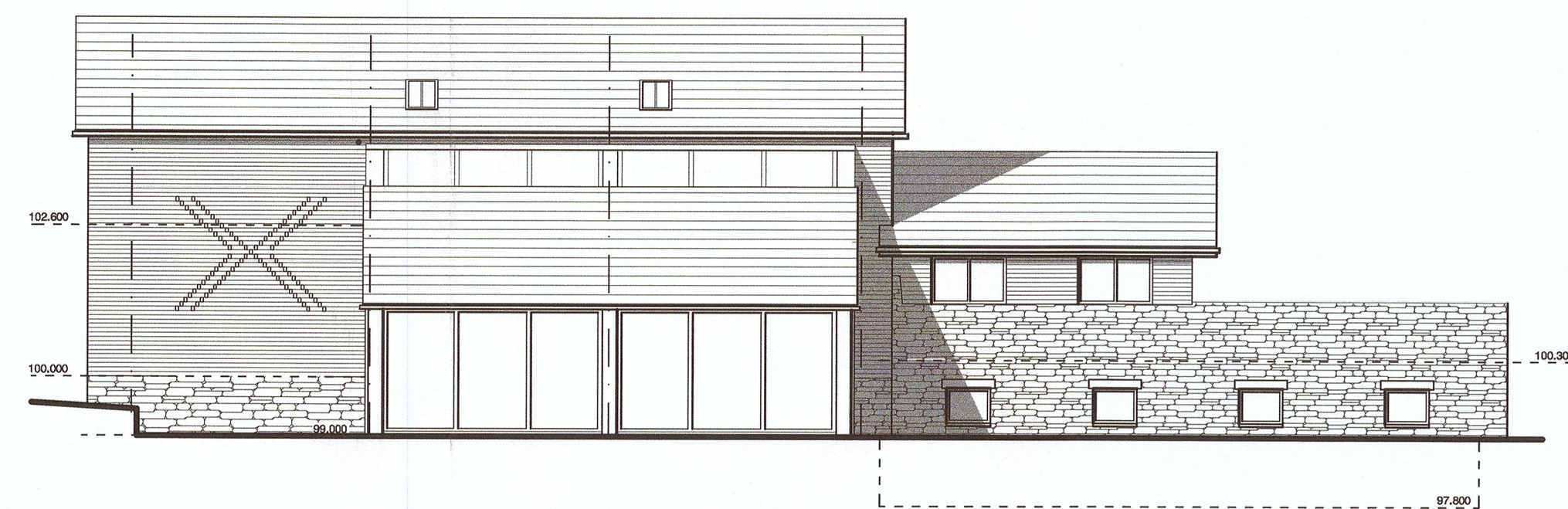
Date: November 2010

DO NOT SCALE OFF THIS DRAWING

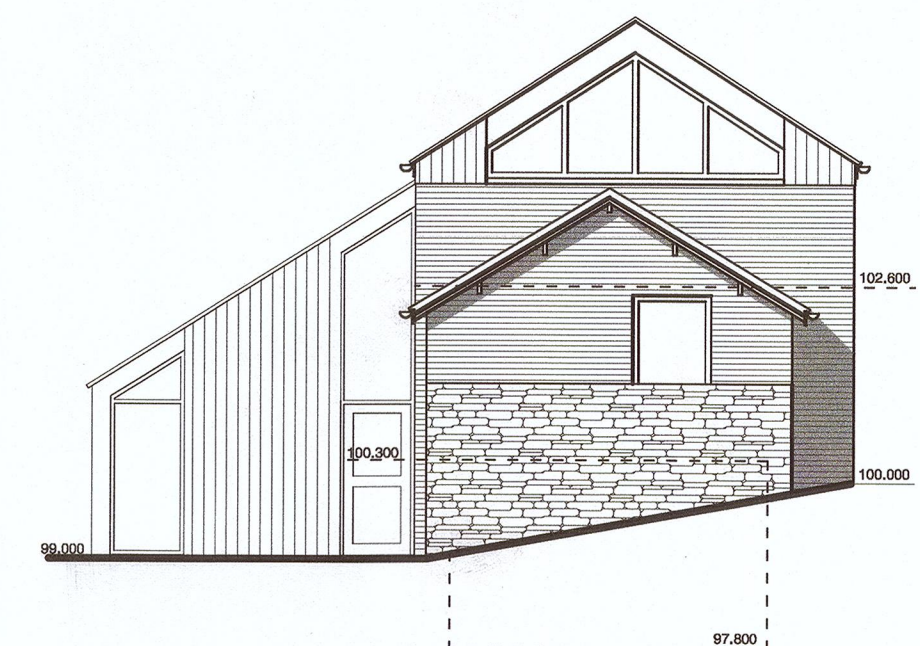
Rev:



Lower Ground Floor Plan



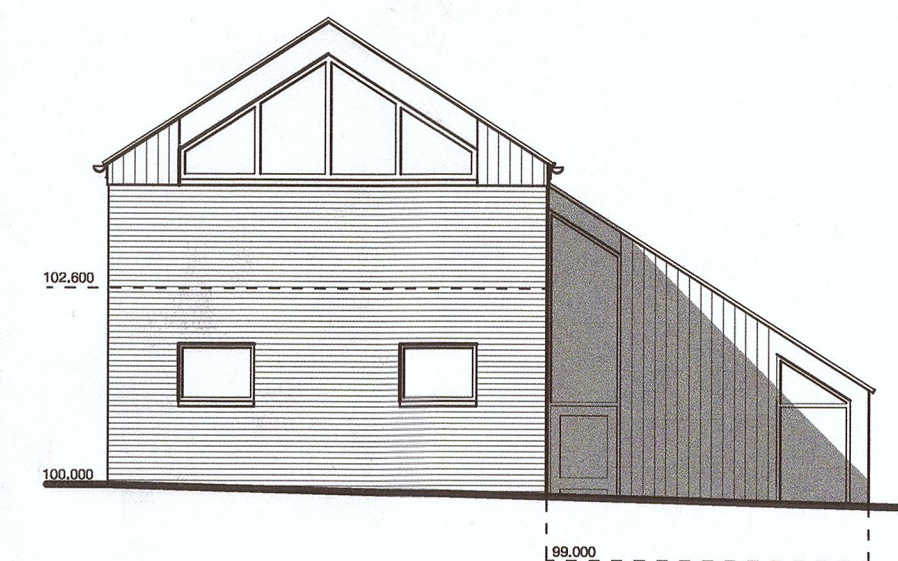
South Elevation



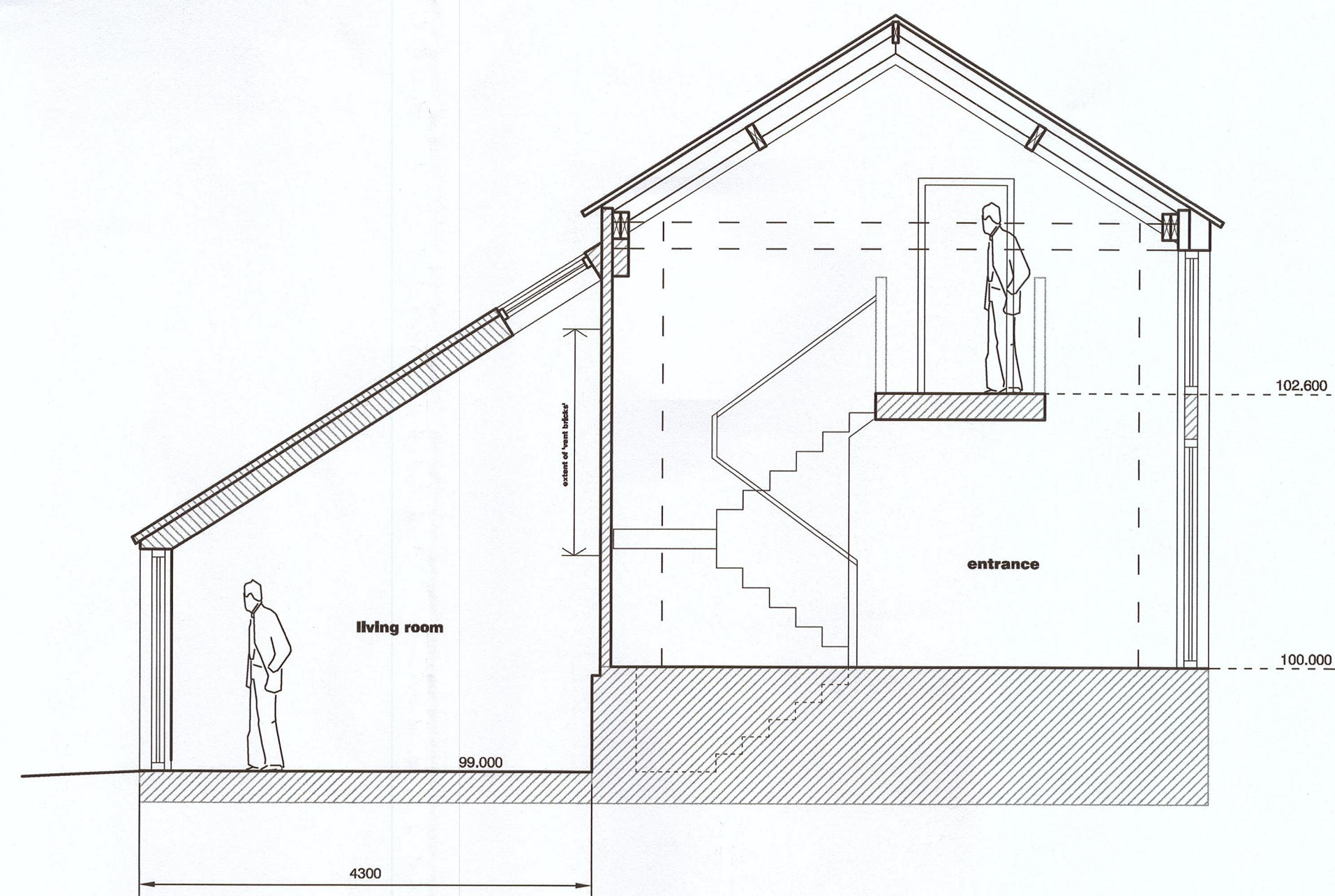
East Elevation



North Elevation



West Elevation



Section AA Scale 1:50

DC046188
 AMENDED
 PLAN
 DATE 04/05/11
 RECEIVED-

Revision C 04.05.11 Minor amendments to suit conservation officer's comments.
 Revision B 25.03.11 Amended to suit conservation officer's comments.
 Revision A 14.03.11 Rooflights amended.



HIGH PEAK ARCHITECTS

13-15 Market Street, Whaley Bridge, High Peak, Derbyshire SK23 7AA.
 Tel: 01663 719717 Fax: 01663 719212 Email: hpa@highpeakarch.com

Werneth Hall Hay Barn
 Cowlshaw Road, Romiley

Proposed plans and elevations

1008.04