

A word cloud in the background of the slide, featuring various locations in Stockport in a light purple, cursive font. The locations include High Hazel, LANE, Grove, BRAMHALL, Great Cheshire, Moor Hulme, MARPLE, Davenport, Marple, Cheshire, Bridge, GATLEY, Romiley, HEATH, and others.

ONE STOCKPORT

ONE STOCKPORT HEALTH AND CARE
AN OVERVIEW

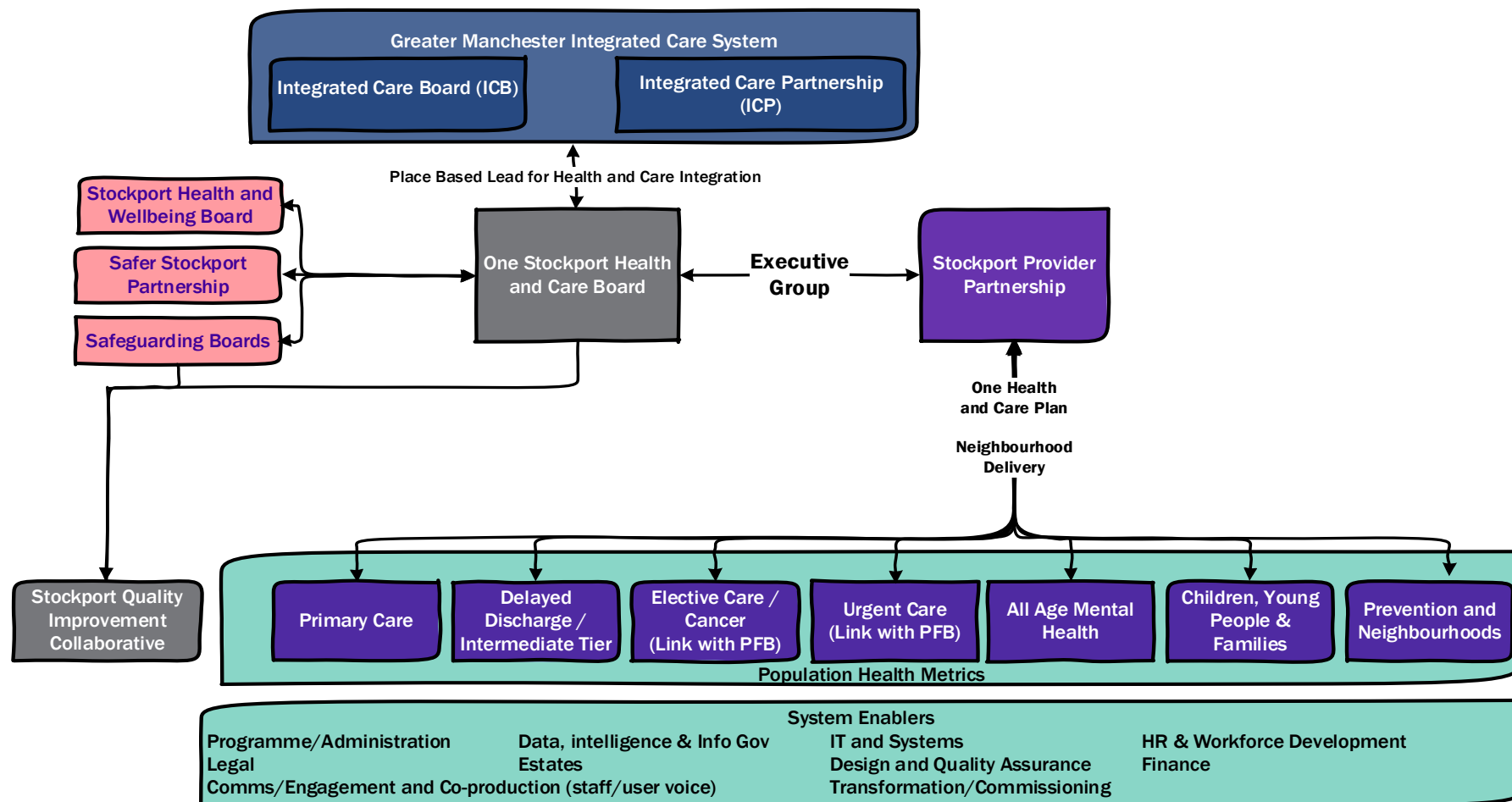
THE FRAMEWORK FOR THE ICS MODEL

- The Health and Care Act 2022 introduced Integrated Care Systems from 1st July, 2022. Integrated Care Systems (ICSs) are partnerships of health and care organisations that bring together NHS, local authority and third sector bodies to take the responsibility and resources of health and care in an area or 'system'. Their aim is to deliver better, more integrated care for people.
- As part of this transition on 1 July 2022, the statutory functions held by Stockport Clinical Commissioning Group transferred to the Greater Manchester Integrated Care Board (GMICB).
- Also transferred were some commissioning responsibilities from NHS England, including the commissioning of Primary Care and some specialised services (with a plan for further delegation over time)
- The legislation has also changed procurement and competition requirements, removing the requirement for mandatory competitive retendering (supported by a new provider selection regime, due to be implemented by December 2022).
- A three tier system:

System	Setting strategic direction and delivering economies of scale
Place / Locality	Bringing together local services to build a comprehensive offer
Neighbourhood	Integrated health and care teams supporting their local communities

Our Integrated Care System		
Level	Population	Overview
System	2.822m in Greater Manchester	Integrated Care System in which the whole area's health and care partners in different sectors come together to set strategic direction and to develop economies of scale.
Structures	Greater Manchester Integrated Care Partnership (ICP) as the NHS body	bringing together the NHS, Local Authorities and wider partners including voluntary sector to address health, social care and public health needs across GM
	Greater Manchester Integrated Care Board	responsible for NHS planning & funding allocation, performance, accountability and functions transferred from CCGs; plus day to day management of the ICS
	Greater Manchester Provider Federation Board	responsible for delivery of NHS Constitution and standards of care across different provider organisations
Place	291,775 in Stockport	Our Borough, bringing together health and care teams to understand local needs and prioritise service delivery to improve health and wellbeing for everyone in Stockport
Structures	Stockport Health & Wellbeing Board	bringing together political, clinical, professional and community leaders across the health and care system to oversee local outcomes
	One Stockport Health and Care Partnership Locality Board	Board of health and care leaders and service providers responsible for co-ordinating the local contribution to health, social and economic development, jointly managing the place-based budget and providing assurance to the GM ICS
	Stockport Provider Partnership	bringing together local care providers to ensure seamless delivery of care, holding each other to account to transform, deliver, assure and sub-contract services to deliver the population health and wellbeing priorities of the Locality Board
Neighbourhood	circa 30,000 to 50,000 people	Local neighbourhoods served by integrated health and care teams to deliver more coordinated and proactive services that keep people happy, healthy & independent
Structures		multi-agency approach from GPs, community services, mental health teams, social care, voluntary sector and Healthwatch etc

GREATER MANCHESTER ICS GOVERNANCE MODEL



CLINICAL AND CARE PROFESSIONAL LEADERSHIP

Neighbourhood Level

- Understand the quality of services provided
- Share good practice and learn when things go wrong
- Engage with the public to understand the experience of care
- Provide support and leadership for the development of neighbourhoods linking across health and care
- Reduce variation and continue to drive up quality
- Consider Population Health approaches, prevention and wider determinants of health
- Collaborate at community level in terms of renewed and developed out of hospital pathways, population health, tackling inequalities and workforce development
- Report into locality quality, safety and performance structures

Locality Level

- Oversight of locality quality, safety and performance of health and care
- Review system quality, safety and performance information
- Celebrate good practice across locality and share across GM
- Assessment of system risks – review of information sources and mitigating actions
- Provide assurance to locality strategic Partnership Board and GM
- Responsible for development and implementation of a Locality Quality Strategy with a relationship to the GM Quality Strategy
- Design governance arrangements to review agreed quality measures, identify risks, implement mitigating actions and escalate accordingly
- Oversee development and monitoring of local quality indicators and share with GM as required
- Ensure CCPL are involved in all decision making

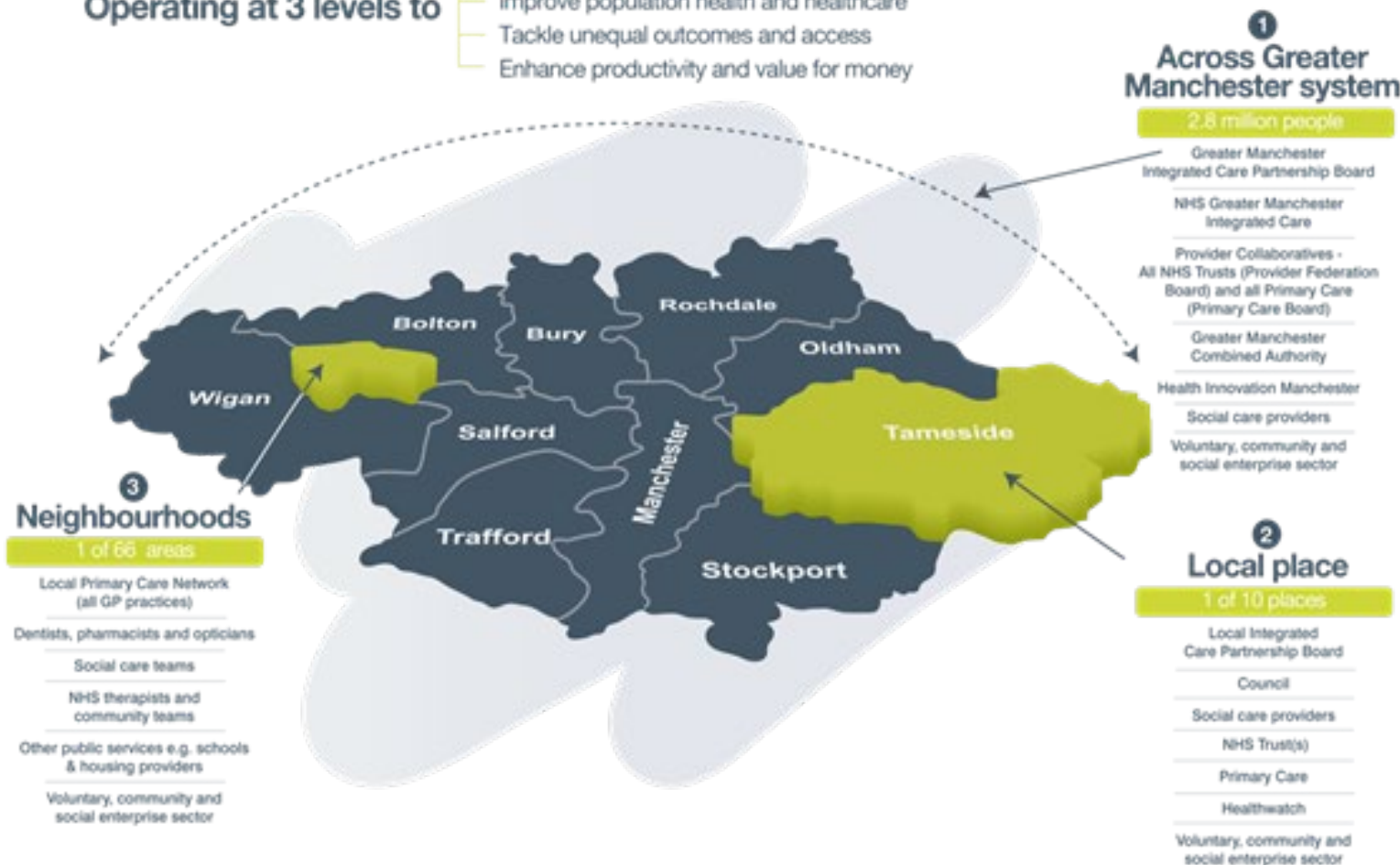
GM Level

- Responsible for development and implementation of a GM Quality Strategy
- Define system quality measures and set system wide standards
- Statutory accountability of Continuing Healthcare, Safeguarding, Special Educational Needs and Disabilities (SEND)
- Coordinate GM wide quality improvement
- Receive locality assurance of safety measures, escalation of risks and mitigating factors
- Share and spread good practice across GM system
- Address system level health inequalities
- Set strategy, standards and principles with GM wide outcome-based service specifications to enable consistent delivery
- National and regional assurance
- Involved in planning and prioritisation to target action and investment where it is most needed
- Oversight of locality quality, safety and performance of health and care services
- Review system quality, safety and performance information
- GM CCPL links to region and national CCPL bodies

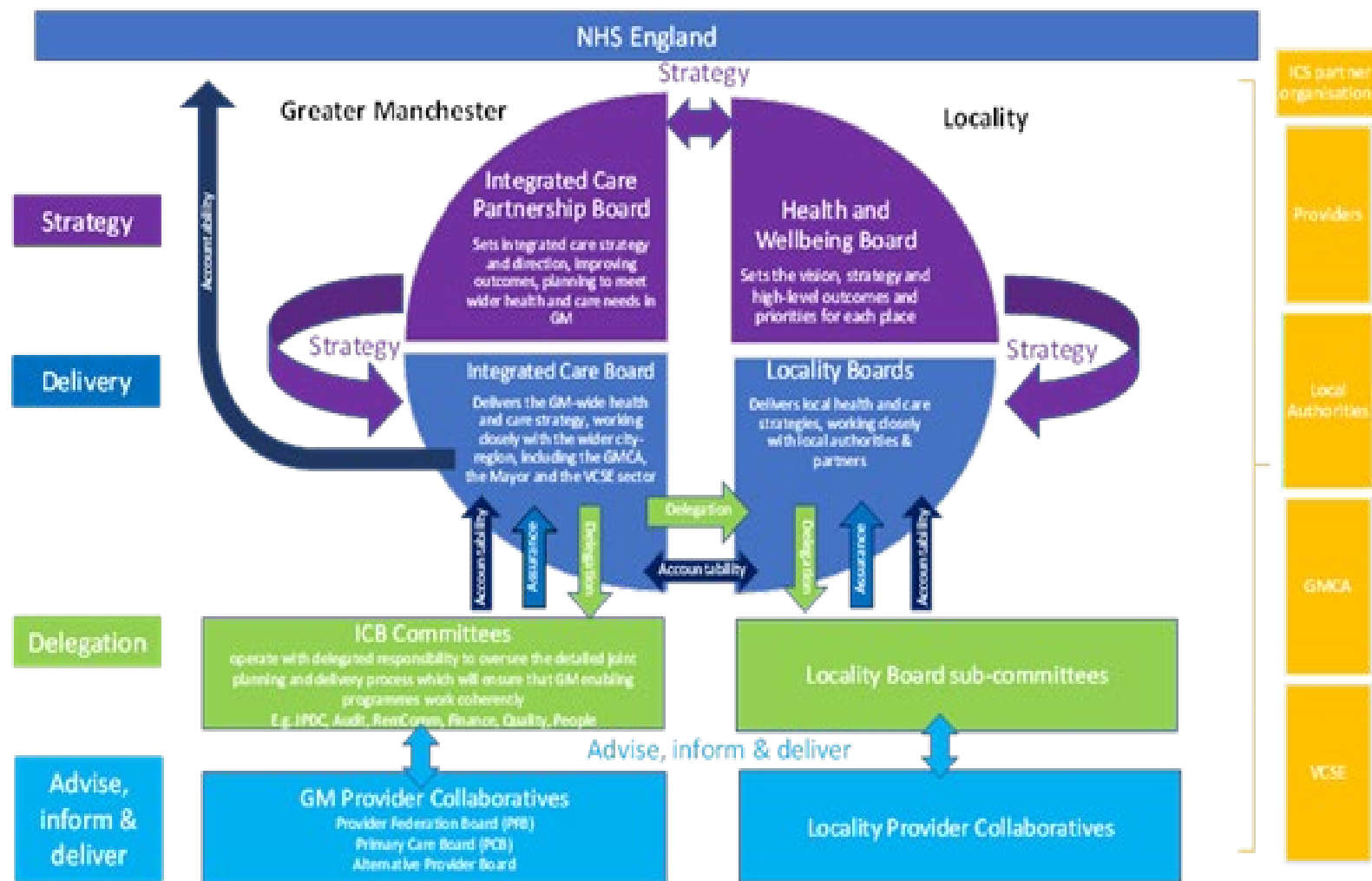
GREATER MANCHESTER ICS SYSTEM MAP

Operating at 3 levels to

- Help the NHS to support broader social and economic development
- Improve population health and healthcare
- Tackle unequal outcomes and access
- Enhance productivity and value for money



GREATER MANCHESTER ICS GOVERNANCE



BUILDING ON STRONG FOUNDATIONS

- We have a history of strong system working between partners in Stockport, strengthened even further during the pandemic.
- Health and wellbeing is already recognised as a priorities from extensive engagement with local people to help form the basis of One Stockport – our 10 year borough plan.
- This focus has been further ratified with the One Stockport Health and Care Plan
- Its vision to create a healthy and happy Stockport recognised the goal of working as one system, wrapping care around the needs of the individual.
- This innovative approach gave a head start on the preparations for the creation of the Stockport locality as an early identify of local priorities ahead of the transition legislation.

ONE STOCKPORT'S MANDATE - TOP OF THE ICS AGENDA

Strategic Outcomes	Measures of Success
 <p>Stockport residents will be healthier and happier</p>	<ul style="list-style-type: none"> • Increase in life expectancy • Increased happiness & emotional wellbeing • More children and young people who are thriving • Reduction in loneliness and social isolation.
 <p>Health and wellbeing inequalities will be significantly reduced</p>	<ul style="list-style-type: none"> • Increase in health life expectancy • Improved access to screening • Earlier diagnosis of cancer, heart disease, and respiratory disease • Reductions in smoking and obesity • Reductions in premature mortality among those with the worst health outcomes
 <p>Safe, high quality health and care services will work together for you</p>	<ul style="list-style-type: none"> • Positive CQC ratings for all services • Consistently high staff and service user satisfaction levels • Delivery of national standards • Improved Access to services • Reduction in Waiting times
 <p>Stockport residents will be more independent and empowered to live their best lives</p>	<ul style="list-style-type: none"> • More people are physically active • More people eating the recommended 5-a-day • Reduced rates of unhealthy drinking • Fewer avoidable emergency hospital admissions • Fewer permanent admissions to care homes

What Action We Will Take

1. Continue to provide **safe, high quality health and care services** through new system leadership arrangements and a joint improvement plan
2. Radical focus on **early help and prevention** through codesigning a new model, recommissioning key services for 2022 and making the most of digital technology. Including the network of support from friends, family members and the many local community groups and organisations that provide vital care and support within the home
3. Improve **mental health and wellbeing** through development of a joint all age mental health and wellbeing strategy working with communities, schools and businesses
4. Work together to undertake **targeted action on inequalities** through a new population health plan and **neighbourhood model** that recognises wider factors such as housing, employment and social connectedness
5. Build and retain a **resilient, valued and inclusive health and care workforce** that promotes homegrown talent to create training and employment opportunities for local people and carers through a joint workforce plan
6. Continue our work to be an **Age-Friendly Borough** through our aging well strategy that proactively supports people to age well and remain healthy, active and enjoy a good quality of life
7. Develop the way we deliver Adult Social Care and Health to help the people of Stockport to live their best lives possible. We will continue to embed and develop our operating models which promote **prevention, reablement and a Home First ethos.**

How We Will Measure Success

- Maintain and increase healthy life expectancy across the Borough, whilst also reducing the widening gap between our communities
- Early intervention and prevention keep people independent for as long as possible and reduces admission and re-admission to hospital, residential or nursing care
- Improvement in the levels of happiness, mental health and emotional wellbeing and increase the number of active people across the Borough
- Better access to mental health treatment and support (via CAMHS and Community Mental Health Services) for children and young people
- Improvement in the quality and timeliness of care and support needed
- Financially sustainable and resilient health and care provision.



ONESTOCKPORT

Health and Care

PLANS FOR A SHARED VISION

WHAT ARE THE AIMS OF THIS NEW WAY OF WORKING FOR LOCAL HEALTH AND CARE SERVICES?

- To help people get the care they need, where they need it, and when they need it.
- Help people stay well, for longer in their own home and in their local community.
- Treat people as individuals and not as a one size fits all.
- Staff retention and recruitment to our local health and care workforce.

WHAT ARE THE BENEFITS FOR THE PEOPLE OF STOCKPORT AND OUR PATIENTS?

- Easier access to local health and care services as teams work closer together.
- Cuts out duplication so no need to keep explaining the same story to difference health and care professionals.
- Your health and care delivered by a team of people all working together for you.
- Help to keep you well before you become so ill you need to go to hospital.
- Advice and support about keeping well covering from where you live, work and play.

HOW WILL NEW HEALTH AND CARE SERVICES BE RUN AT A GREATER MANCHESTER LEVEL?

Covering the whole of Greater Manchester is an Integrated Care System (ICS)
and there are 42 across the country.

Our local ICS is called
Greater Manchester Integrated Care Partnership

It is overseen by the
Greater Manchester Integrated Care Partnership Board

Role:

It is responsible ensuring that we have safe, high quality, health and care services

HOW WILL NEW HEALTH AND CARE SERVICES BE RUN AT A STOCKPORT LEVEL?

- Our local system is called the One Stockport Health and Care Partnership
- It is overseen by the One Stockport Health and Care Partnership Board
This is Chaired by Councillor Mark Hunter, Leader of Stockport Council and Caroline Simpson, the Chief Executive of Stockport Council, runs the Board and she is also known as the Place Lead at the Board.
- It has members representing:
 - Adult Social Care
 - Children's Services
 - Greater Manchester Police
 - Healthwatch Stockport
 - NHS GM
 - Pennine Care Foundation Trust
 - Primary Care (including GP practices) representation
 - Public Health
 - Sector 3 – representing our local VCSO
 - Stockport Homes
 - Stockport NHS Foundation Trust

HOW WILL PARTNERS IN STOCKPORT BE PART OF THE NEW WAY OF WORKING?

The Stockport Provider Partnership – what is it?

This is local health and care partners, who provide health and care services, now coming together in a new group called The Stockport Provider Partnership

The members include:

- **Adult Social Care & Children's Services**
- **GM Deputy Place Lead**
- **Healthwatch & Public voice**
- **Hospice**
- **Pennine Care NHS FT**
- **Primary Care Board Chair**
- **Population Health**
- **Stockport NHS FT**
- **VCFSE**

WHAT IS THE STOCKPORT PRIMARY CARE BOARD (PCB)?

- The Primary Care Board brings together the primary care provider network to create a strong primary care leadership and voice.
- It is a non-decision making body to implement the aims of the One Stockport Health and Care Plan and to strategically consider the delivery of primary care
- It can make recommendations and representations to the committees and board governing the ICS, Place and Neighbourhood with mechanisms to effectively influence ICS policy.

Key objectives include:

- To facilitate clear communication between the Stockport Provider Board and Primary Care Providers on matters relating to System development
- To ensure at place and ICS are kept informed of the concerns, challenges and aspirations of Primary Care Providers
- Be the system voice of primary care providers to ensure equity of decision making of resources and to support early intervention and prevention across the place.

WHAT ARE THE RESPONSIBILITIES OF THE STOCKPORT PRIMARY CARE BOARD (PCB)?

It has a range of responsibilities including:

- To ensure the highest quality primary care and value for money is provided to the Stockport Place and people.
- To ensure clinical leadership is at the heart of primary care development
- Developing a sustainable primary care strategy, including a sustainable workforce strategy.
- Providing a framework for the integration of PCN's neighbourhoods and community services.
- To develop and design new primary care programmes aligned to new investments in the local place.
- Focussing on improving health population and reducing inequalities, early intervention and prevention as well as care closer to home.
- Enhancing partnership working between primary care providers to support closer working to help address the wider needs across the primary care sector in Stockport.

MEMBERSHIP OF THE PRIMARY CARE BOARD

Membership including representatives from:

- **A representative with a strategic role in Stockport Locality Board**
- **Primary Care Network Clinical Directors (CDs) nominated by the Clinical Directors for Stockport**
- **An Executive representative from the Stockport Local Medical Committee (LMC)**
- **Two representatives from Viaduct care the GP Federation ()**
- **Stockport Medical Director or Deputy from the Stockport Quality Collaborative**
- **A representative from Stockport Dental Committee**
- **A representative from Stockport Dental Provider Federation**
- **A representative from Stockport Pharmacy Committee**
- **A representative from Stockport Pharmacy Provider Federation**
- **A representative from Stockport Optometry Committee**
- **A representative from Stockport Optometry Provider Federation**
- **A representative from Stockport Out of hours provider – Mastercall**
- **A Stockport Practice Nurse representative**
- **A representative from PCN**

In attendance:

- **A representative from Sector 3**
- **A representative from Healthwatch**
- **GM Integrated Care Locality Team Lead for Primary Care**

STOCKPORT PRIMARY CARE BOARD GOVERNANCE?

Locality Board
Formal committee of the Locality

Provider Partnership Board
Bringing Stockport's Providers together

Stockport's Primary Care Board
Bringing together Stockport's Primary Care

PCN meeting and practice meetings
Understanding the views of
General Practice

WHAT IS THE STOCKPORT PROVIDER PARTNERSHIP?

- The aim of Stockport Provider Partnership is to strengthen integrated and collaborative partnership working with providers in Stockport from place level through to neighbourhoods.
- It aims to create an integrated health and care environment to support all members of our local community to achieve positive health outcomes at all stages of their life.

Key objectives include:

- Working to create a single view of health and care providers in Stockport operating under a 'One Stockport' model by working across organisational and cultural barriers, encouraging open collaboration.
- To facilitate clear communication between the Stockport Provider Board and Primary Care Providers on matters relating to System development.
- To ensure at place and ICS are kept informed of the concerns, challenges and aspirations of Primary Care Providers.
- Be the system voice of primary care providers to ensure equity of decision making of resources and to support early intervention and prevention across the place.

MEMBERSHIP OF THE STOCKPORT PROVIDER PARTNERSHIP

Membership including representatives from:

CEO of Healthwatch Stockport (independent – facilitating the involvement of local people, and inputting their views into service provision and commissioning) - Maria Kildunne

- Director of Public Health from Stockport MBC - Jennifer Connolly
- Director of Adult Social Care – Helen Coombes
- Chief Operating Officer SFT (Workstream SRO) – Jackie McShane
- Two senior clinical representatives (i.e. Medical Director, Chief Nurse) in attendance, to provide subject matter expertise - Anita Rolfe and Simon Woodworth
- Director of Finance Rep Stockport - Michael Cullen / John Graham
- Director of Transformation Stockport NHS Foundation Trust - Angela Brierley
- Director of Strategy & Partnerships Stockport NHS Foundation Trust - Jonathan O'Brien

The Chair will be the Chief Executive of Stockport NHS Foundation Trust

GOVERNANCE OF THE STOCKPORT PROVIDER PARTNERSHIP

- It is not a statutory body, but a voluntary partnership between Stockport health and care providers.
- The Provider Partnership works with the Stockport Locality Board to inform the health and care strategy and delivery on the aims and objectives of the One Stockport Health and Care Plan and the NHS Long Term Plan.
- It will help to create a unified view of system-wide provider performance working with the Stockport Locality Board.
- Where appropriate, it will also liaise with other groups and wider stakeholders such as the Greater Manchester Provider Federation and GM Alternative Provider Federation and will engage with groups to inform discussion and proposals including the Clinical and Professional Forum and the People and Community Voice Groups to ensure views of wider stakeholder are included in proposals.

WHAT IS THE STOCKPORT QUALITY IMPROVEMENT COLLABORATIVE (SQIC)?

What is a Neighbourhood?

- SQIC provides clinical leadership to influence and shape health and care objectives to ensure the best decisions are made for the population of Stockport. It meets monthly and reports to the Stockport Locality Board and GMICB System Quality Group.

Key objectives include:

- Put outcomes, quality and efficiency at the heart of local commissioning and service provision.
- Considering health inequalities, valuing diversity, and promoting equality.
- Preparing a Quality Strategy for the Stockport system.
- Preparing a Workforce Strategy for the Stockport system.
- Encouraging all health and social care staff to take care of each other's welfare to improve job satisfaction and support workforce development planning.

MEMBERSHIP OF THE STOCKPORT QUALITY IMPROVEMENT COLLABORATIVE (SQIC)?

- Membership brings together clinical and care leaders from Health and Social Care organisations across Stockport including representatives from:
- Stockport Locality ICB – Deputy Place Lead
- Stockport MBC – Director Adult Social Care and Director Children’s Services
- Stockport MBC – Director of Public Health
- Stockport NHS FT – Medical Director and Nursing Director
- Stockport PCNs – Clinical Director
- Viaduct Care - Medical Director and Nursing Director
- Mastercall – Medical Director and Nursing Director
- Pennine Care NHS FT – Nursing Director
- St Ann’s Hospice – Medical Director and Nursing Director

It is Chaired by Director Health, Quality Improvement, Deputy Place Lead (Stockport).

HOW WILL NEW HEALTH AND CARE SERVICES BE RUN AT A 'NEIGHBOURHOOD' LEVEL?

What is a Neighbourhood?

- They cover local groups of GP practices, who work together in groups called Primary Care Networks.
- Using their local knowledge and experience they can look at an issue at a real community level.
- Health and care professionals can work together on health issues in a very local area.
- Care and services can then be tailored to the particular needs of a local area.
- Neighbourhood working can help break down barriers and inequalities by using and building on links within local communities.

For more information on Integrated Care Systems go to:

<https://www.england.nhs.uk/integratedcare/what-is-integrated-care/>

<https://www.kingsfund.org.uk/publications/integrated-care-systems-explained>

If you have any questions or comments please e-mail:

Stockportccg.communications@nhs.net