

This drawing is © C4 Projects and is not to be copied, reproduced or re-distributed either in whole or in part without the prior written permission of the originator.

The originator shall have no responsibility for any liability, loss, cost, damage or expense arising from or relating to any use of this document other than for its intended purpose on this project.

This drawing shall be read in conjunction with all other relevant drawings, specifications and associated documentation. Any discrepancies, errors or omissions are to be reported to the originator before proceeding with work.

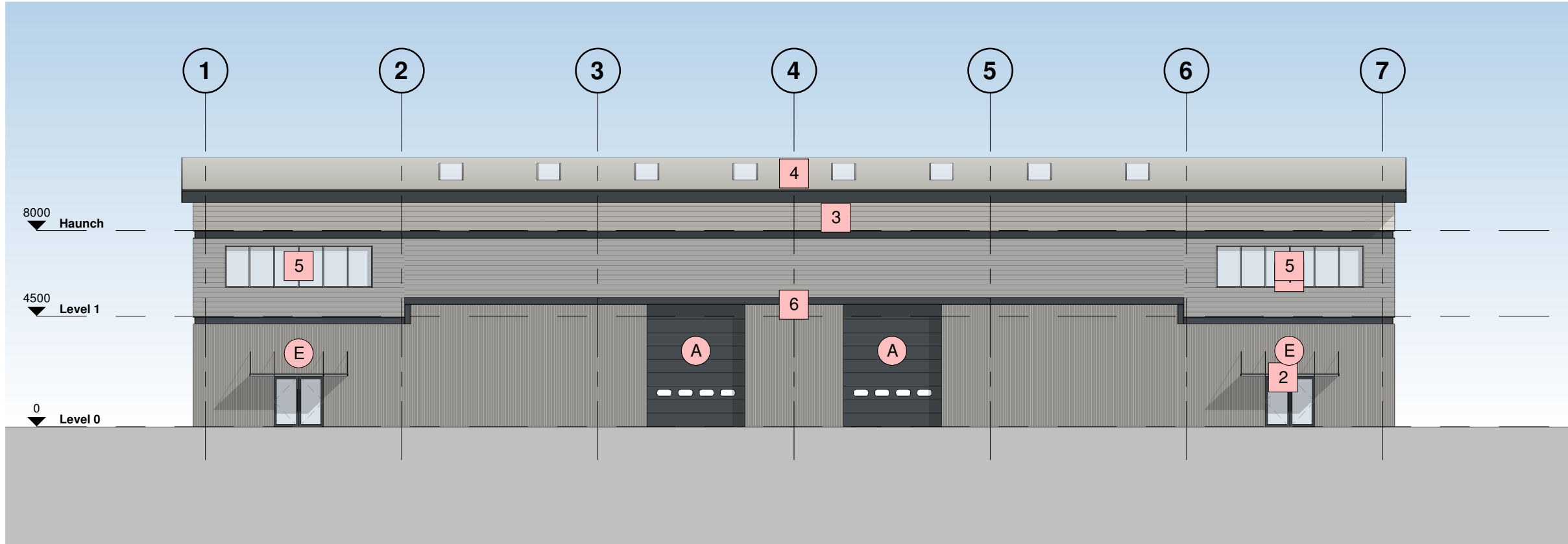
All dimensions are to be checked on site by the contractor prior to proceeding with any work. This drawing shall not be scaled to ascertain any dimensions, work to figured dimensions only.

**DISCLAIMER**  
When this drawing is issued in CAD, it is an uncontrolled version issued for information only, to enable the recipient to prepare their own documents/ drawings for which they are solely responsible.

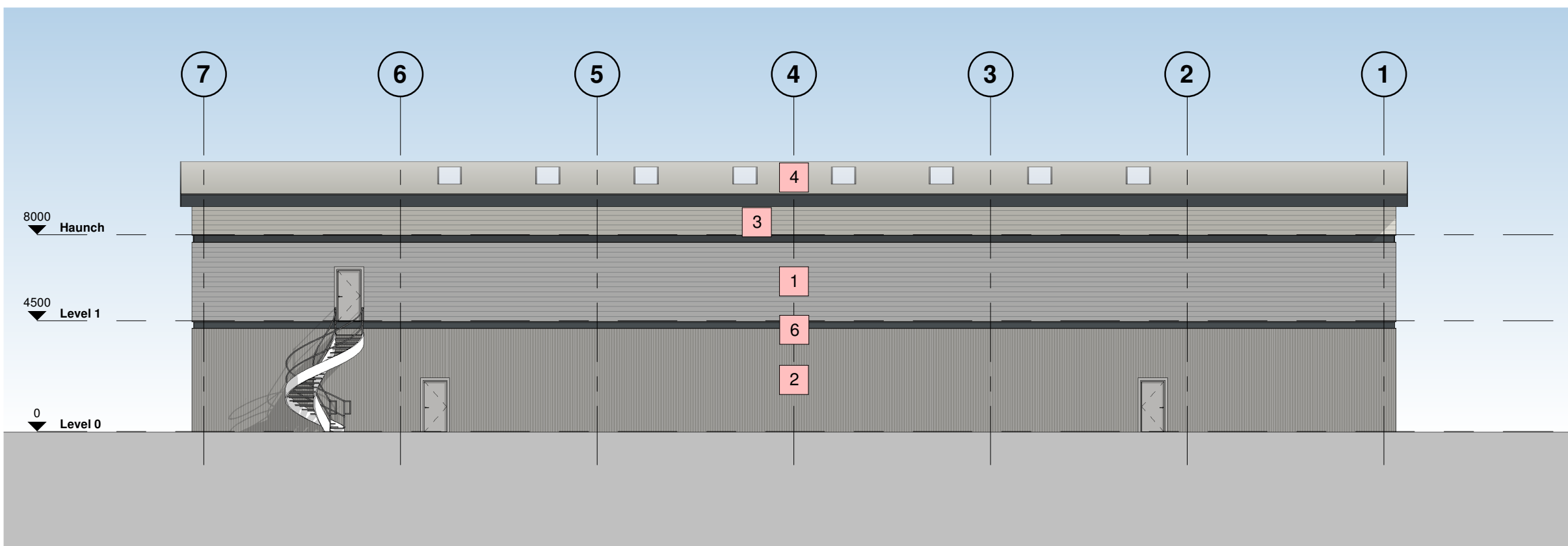
**SOFTWARE INTEROPERABILITY**  
C4 Projects prepared this drawing using Autodesk REVIT Architecture.

C4 Projects does not accept liability for any loss or degradation of any information held in the drawing resulting from the translation from the original file format to any other file format or from the recipients reading of it in any other programme.

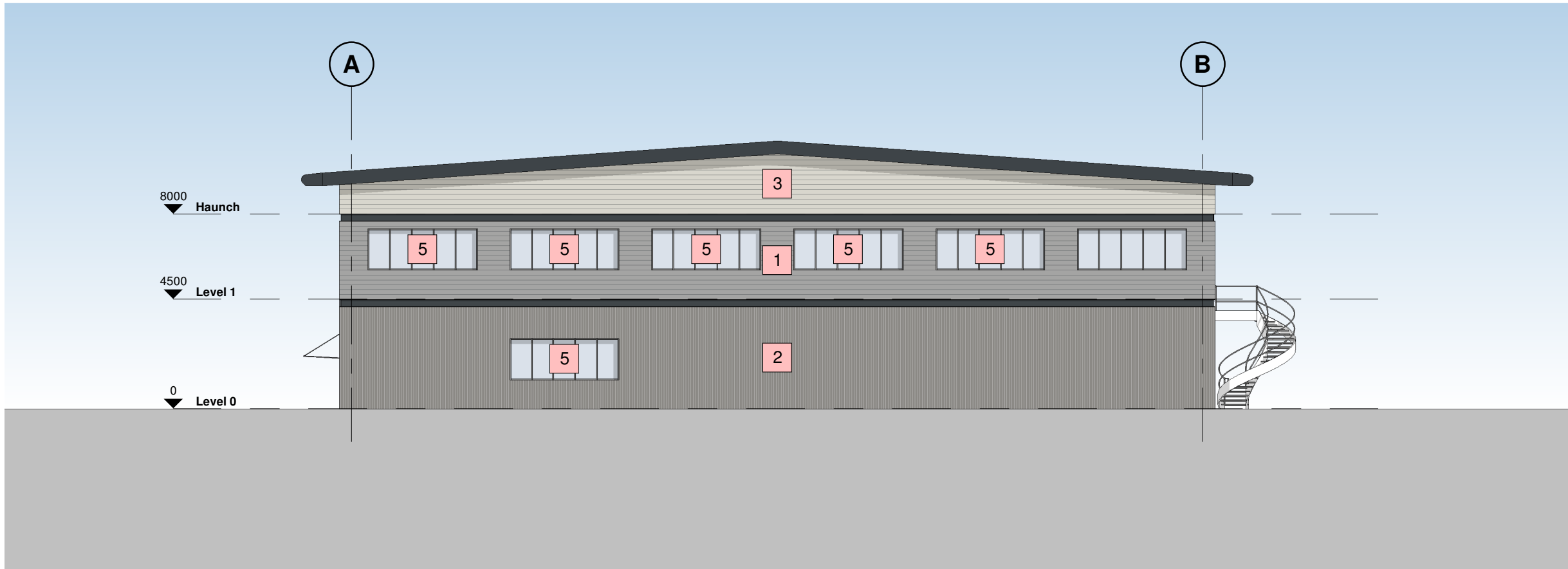
Hazard Identification		
ref	hazard	date



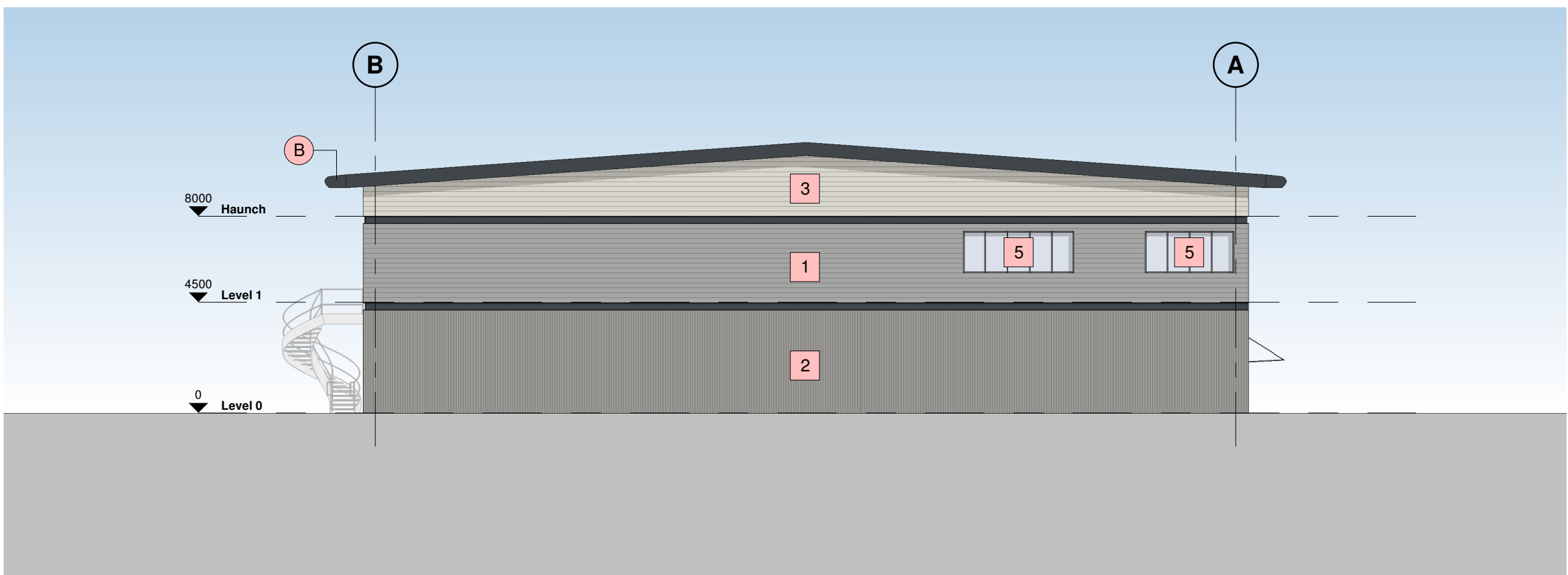
1 North West Elevation  
1 : 200



2 South East Elevation  
1 : 200



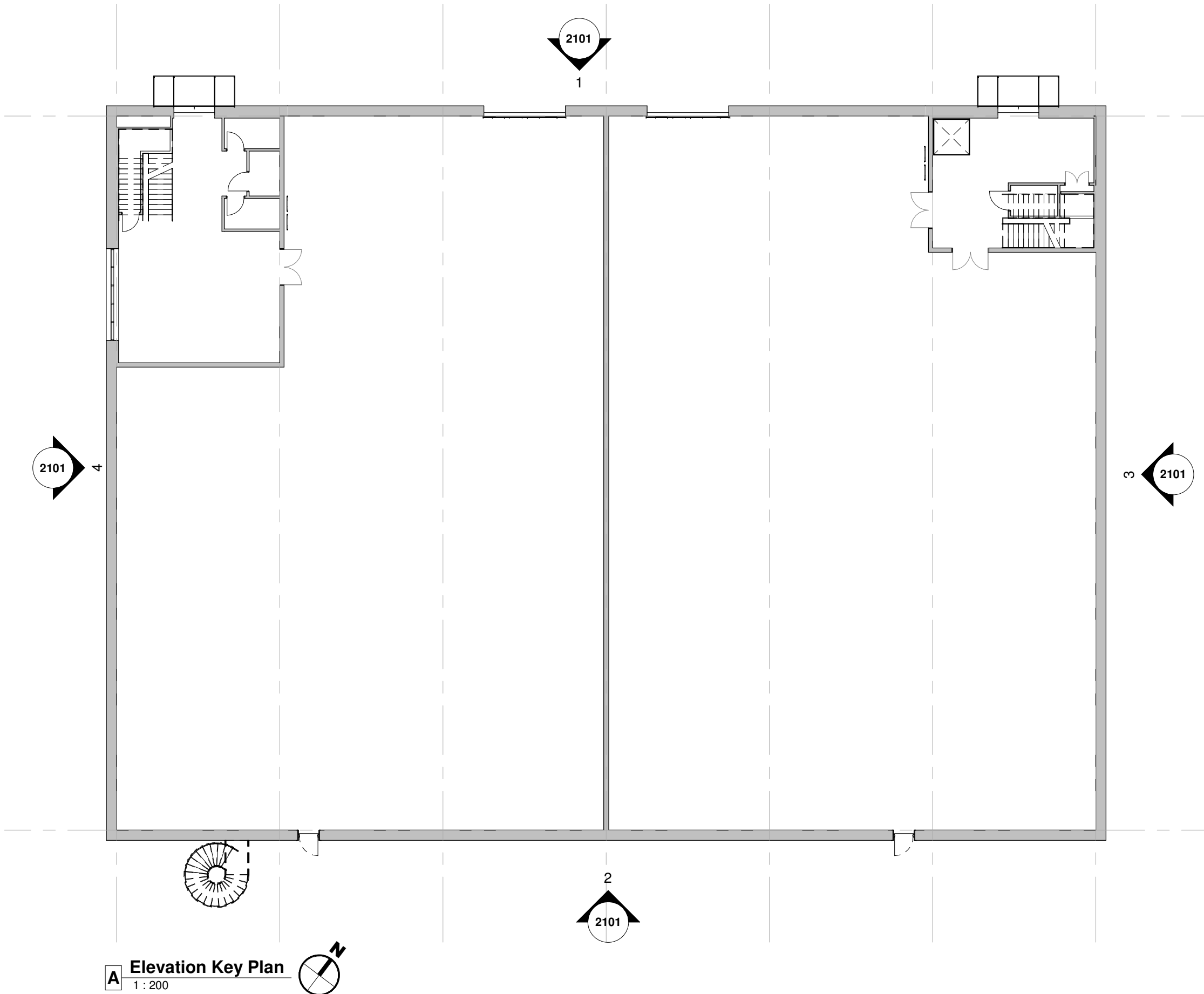
4 South West Elevation  
1 : 200



3 North East Elevation  
1 : 200

#### Building Fabric Materials Schedule

- 1 Wall Type 1 - Built-up metal cladding (twin skinned, insulated)  
Horizontally Laid Mini Sinusoidal Profile - White Aluminium (RAL 9006)
- 2 Wall Type 2 - Built-up metal cladding (twin skinned, insulated)  
Vertically Laid Trapezoidal Profile - Grey Aluminium (RAL 9007)
- 3 Wall Type 3 - Built-up metal cladding (twin skinned, insulated)  
Horizontally Laid Mini Sinusoidal Profile - Hamlet (RAL 9002)
- 4 Roof type 1, Built up metal cladding - Trapezoidal Profile -  
Goosewing Grey (RAL 7038) with 10% integrated GRP rooflights
- 5 Aluminium Curtain Wall stick frame system  
PPC Anthracite (RAL 7016) framing, double glazed infills (solar control)
- 6 Feature PFC Channel  
Anthracite (RAL 7016)
- A Operational Door - Level Access  
Sectional insulated shutter, plastisol coated finish, Anthracite (RAL 7016)
- B Eaves & Verge bullnoses  
Aluminium profiles, PPC finish Anthracite (RAL 7016)
- C Personnel Access / Escape doorset - Warehouse  
Galvanised steel, PPC finish matched to cladding, thermally insulated core
- D Rainwater Goods  
Gravity fed rain water system with Aluminium rainwater downpipes  
Colour to match cladding as required.
- E Glazed Canopy  
Proprietary glazed canopy over doors



A Elevation Key Plan  
1 : 200

P3	Layout Updated	BC	06.09.21	DC
P2	Update Issue	BC	19.08.21	DC
P1	First Issue	BC	29.07.21	DC
Rev	Revision Details	Drawn	Date	Checked

**C4 Projects**  
Quayside,  
Wildespool Business Park,  
Stockton Heath,  
W44 6HL,  
t: 01925 751 852  
e: info@c4projects.co.uk  
www.c4projects.co.uk

Project Management • Architecture • Building Surveying • Cost Consultancy

Client  
WUKPG

Project  
Vauxhall Industrail Estate  
Stockport

Drawing Title  
Unit 1 - Proposed Elevations

Status Purpose of Issue  
S2 SUITABLE FOR INFORMATION

Drawn by	BC	Created	July 21
C4 Job no.	21093	Scale	As indicated @ A1

Drg no.	21093-C4P-V1-ZZ-DR-A-2101	Rev	P3
---------	---------------------------	-----	----

This drawing is © C4 Projects and is not to be copied, reproduced or re-distributed either in whole or in part without the prior written permission of the originator.

The originator shall have no responsibility for any liability, loss, cost, damage or expense arising from or relating to any use of this document other than for its intended purpose on this project.

This drawing shall be read in conjunction with all other relevant drawings, specifications and associated documentation. Any discrepancies, errors or omissions are to be reported to the originator before proceeding with work.

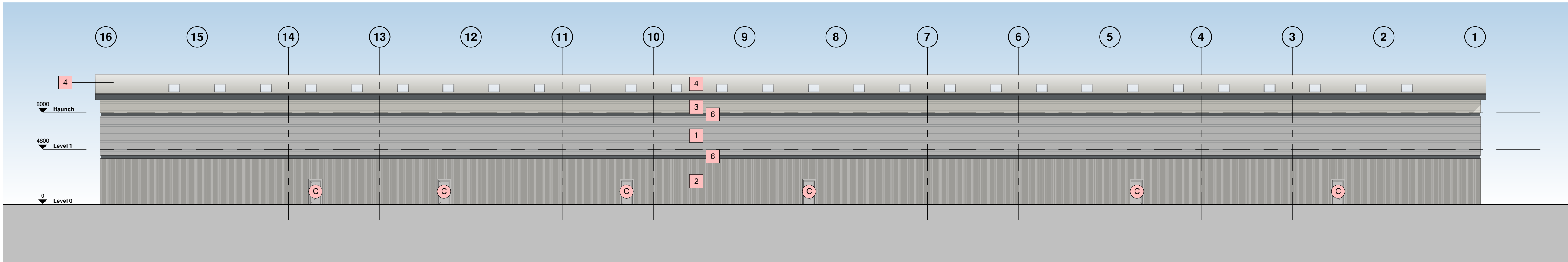
All dimensions are to be checked on site by the contractor prior to proceeding with any work. This drawing shall not be scaled to ascertain any dimensions, work to figured dimensions only.

**DISCLAIMER**  
When this drawing is issued in CAD, it is an uncontrolled version issued for information only, to enable the recipient to prepare their own documents/ drawings for which they are solely responsible.

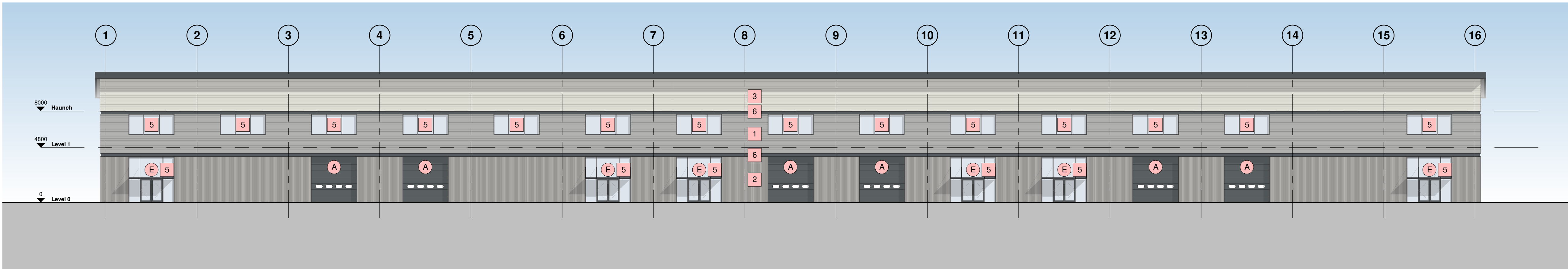
**SOFTWARE INTEROPERABILITY**  
C4 Projects prepared this drawing using Autodesk REVIT Architecture.

C4 Projects does not accept liability for any loss or degradation of any information held in the drawing resulting from the translation from the original file format to any other file format or from the recipients reading of it in any other programme.

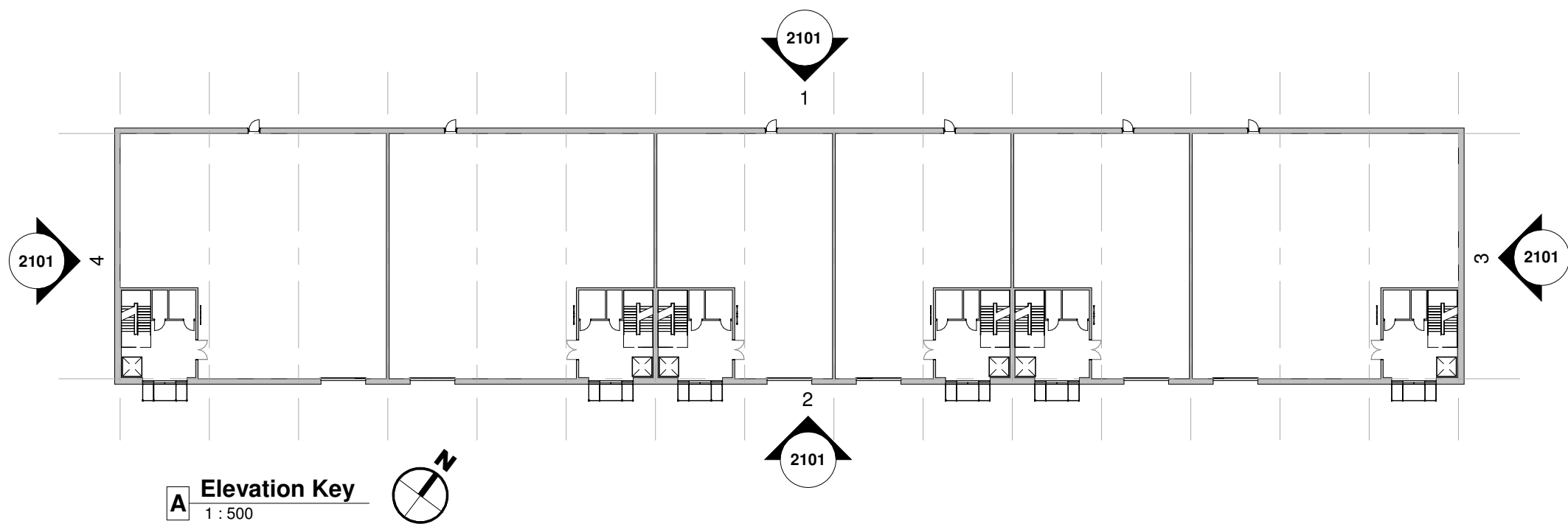
ref	hazard	date



1 North West Elevation  
1 : 200

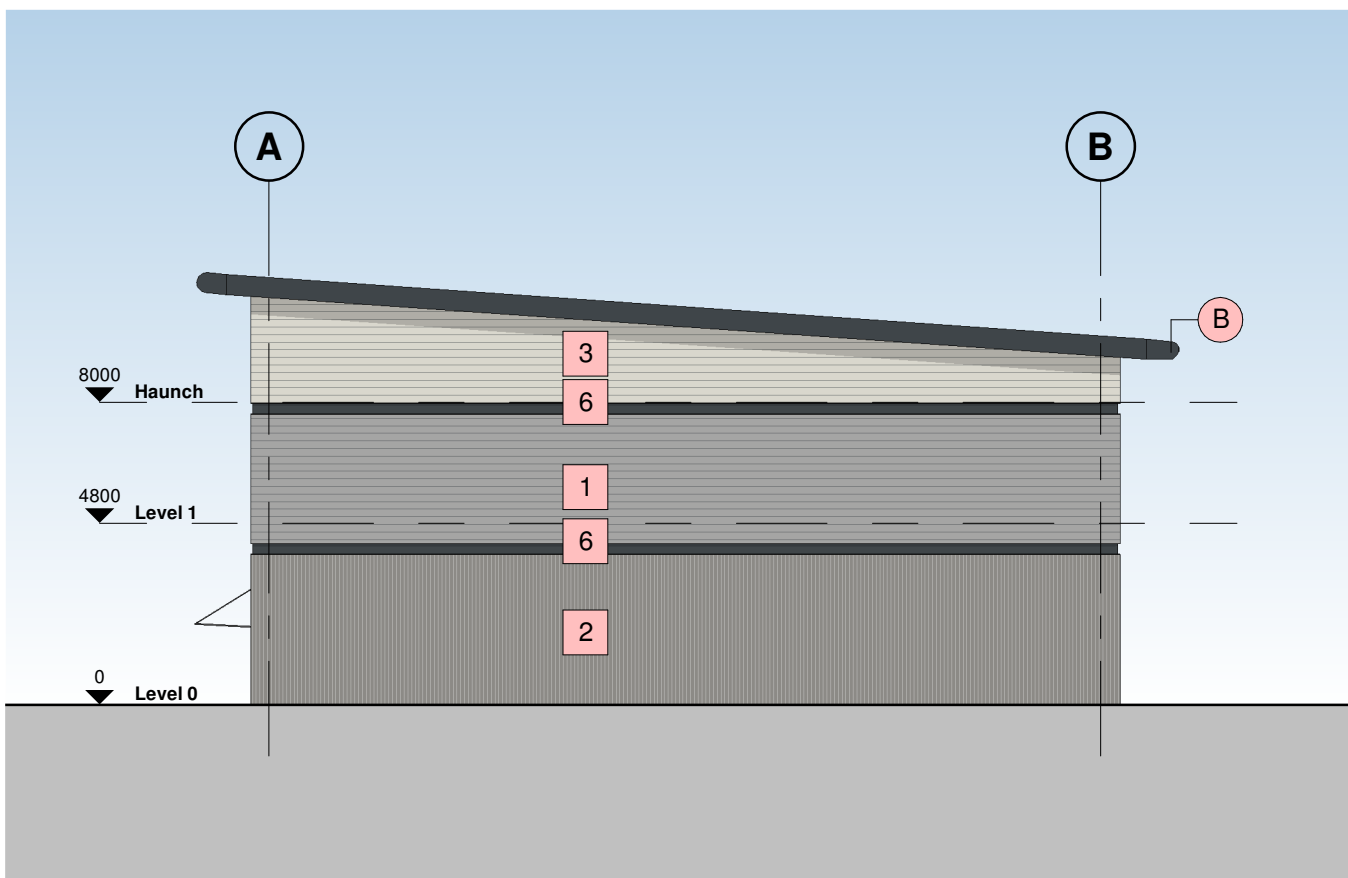


2 South East Elevation  
1 : 200

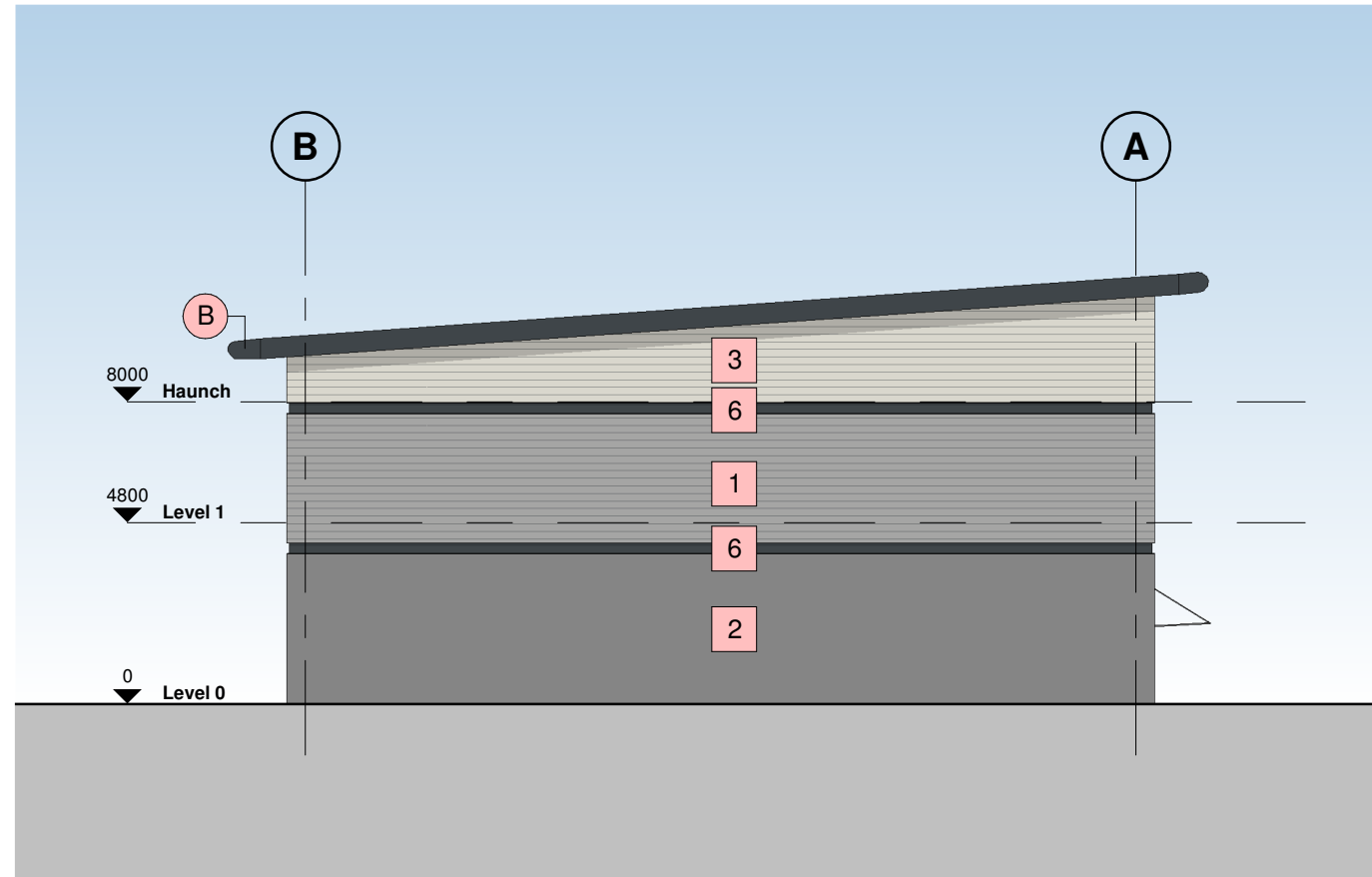


### Building Fabric Materials Schedule

- 1 Wall Type 1 - Built-up metal cladding (twin skinned, insulated)  
Horizontally Laid Mini Sinusoidal Profile - White Aluminium (RAL 9006)
- 2 Wall Type 2 - Built-up metal cladding (twin skinned, insulated)  
Vertically Laid Trapezoidal Profile - Grey Aluminium (RAL 9007)
- 3 Wall Type 3 - Built-up metal cladding (twin skinned, insulated)  
Horizontally Laid Mini Sinusoidal Profile - Hamlet (RAL 9002)
- 4 Roof type 1, Built up metal cladding - Trapezoidal Profile -  
Goosewing Grey (RAL 7038) with 10% intergrated GRP rooflights
- 5 Aluminium Curtain Wall stick frame system  
PPC Anthracite (RAL 7016) framing, double glazed infills (solar control)
- 6 Feature PFC Channel  
Anthracite (RAL 7016)
- A Operational Door - Level Access  
Sectional insulated shutter, plastisol coated finish, Anthracite (RAL 7016)
- B Eaves & Verge bullnoses  
Aluminium profiles, PPC finish Anthracite (RAL 7016)
- C Personnel Access / Escape doorset - Warehouse  
Galvanised steel, PPC finish matched to cladding, thermally insulated core
- D Rainwater Goods  
Gravity fed rain water system with Aluminium rainwater downpipes  
Colour to match cladding as required.
- E Glazed Canopy  
Proprietary glazed canopy over doors



3 North East Elevation  
1 : 200



4 South West Elevation  
1 : 200

P3	Layout Updated	BC	06.09.21	DC
P2	Update Issue	BC	19.08.21	DC
P1	First Issue	BC	29.07.21	DC
Rev	Revision Details	Drawn	Date	Checked

**C4 Projects**  
Quayside,  
Wildespool Business Park,  
Stockton Heath,  
W44 6HL,  
t: 01925 751 852  
e: info@c4projects.co.uk  
www.c4projects.co.uk

Project Management • Architecture • Building Surveying • Cost Consultancy

Client  
WUKPG

Project  
Vauxhall Industrail Estate  
Stockport

Drawing Title  
Unit 2 - Proposed Elevations

Status Purpose of Issue  
S2 SUITABLE FOR INFORMATION

Drawn by	BC	Created	July 21
C4 Job no.	21093	Scale	As indicated @ A1

Drg no.	Rev
21093-C4P-V2-ZZ-DR-A-2101	P3

This drawing is © C4 Projects and is not to be copied, reproduced or re-distributed either in whole or in part without the prior written permission of the originator.

The originator shall have no responsibility for any liability, loss, cost, damage or expense arising from or relating to any use of this document other than for its intended purpose on this project.

This drawing shall be read in conjunction with all other relevant drawings, specifications and associated documentation. Any discrepancies, errors or omissions are to be reported to the originator before proceeding with work.

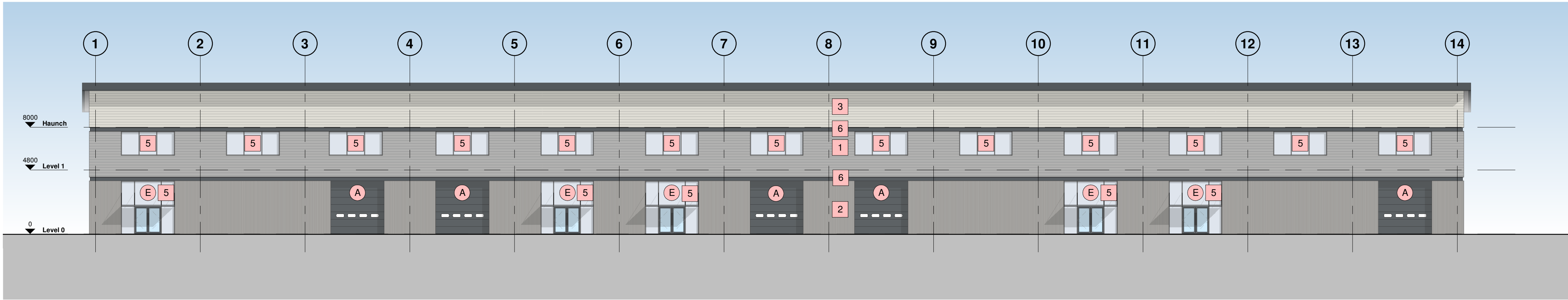
All dimensions are to be checked on site by the contractor prior to proceeding with any work. This drawing shall not be scaled to ascertain any dimensions, work to figured dimensions only.

**DISCLAIMER**  
When this drawing is issued in CAD, it is an uncontrolled version issued for information only, to enable the recipient to prepare their own documents/drawings for which they are solely responsible.

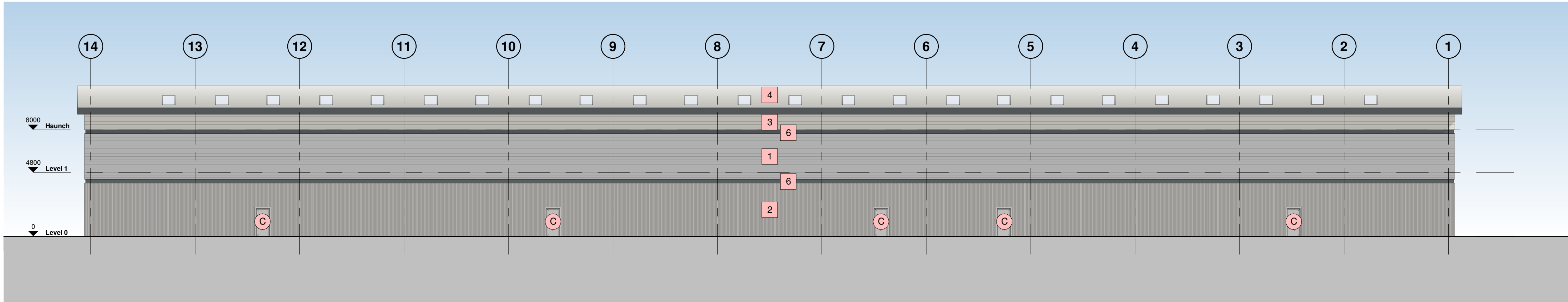
**SOFTWARE INTEROPERABILITY**  
C4 Projects prepared this drawing using Autodesk REVIT Architecture.

C4 Projects does not accept liability for any loss or degradation of any information held in the drawing resulting from the translation from the original file format to any other file format or from the recipients reading of it in any other programme.

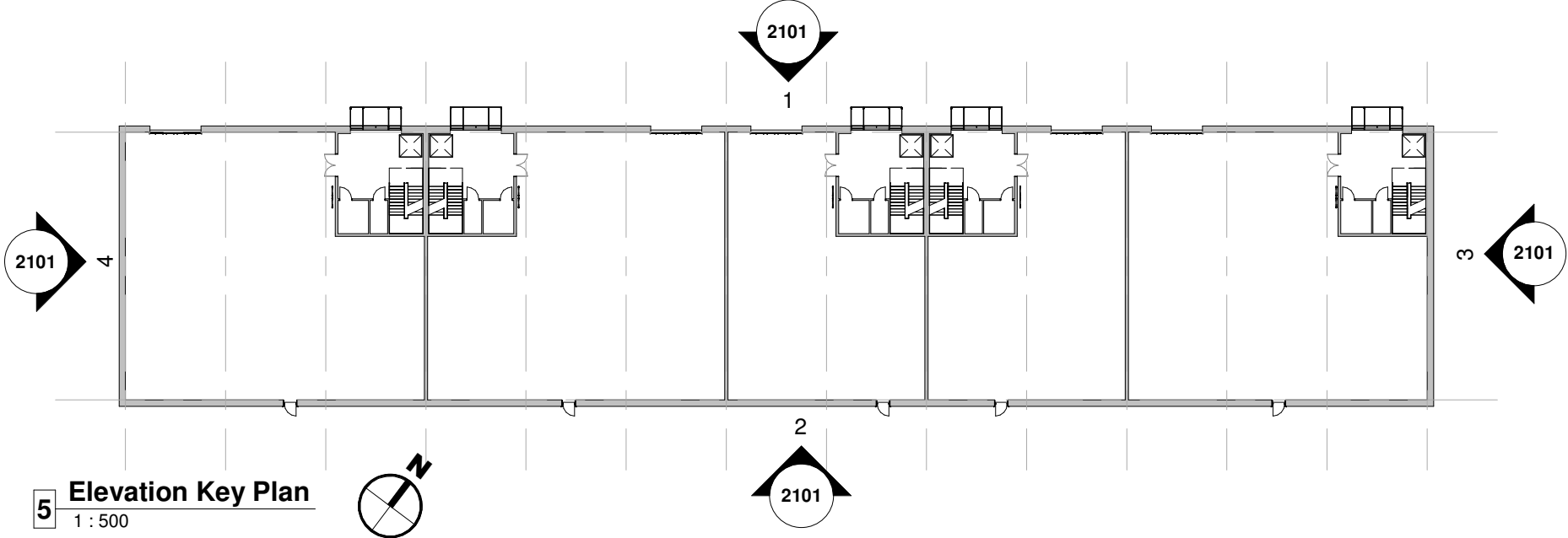
Hazard Identification		
ref	hazard	date



1 North West Elevation  
1 : 200



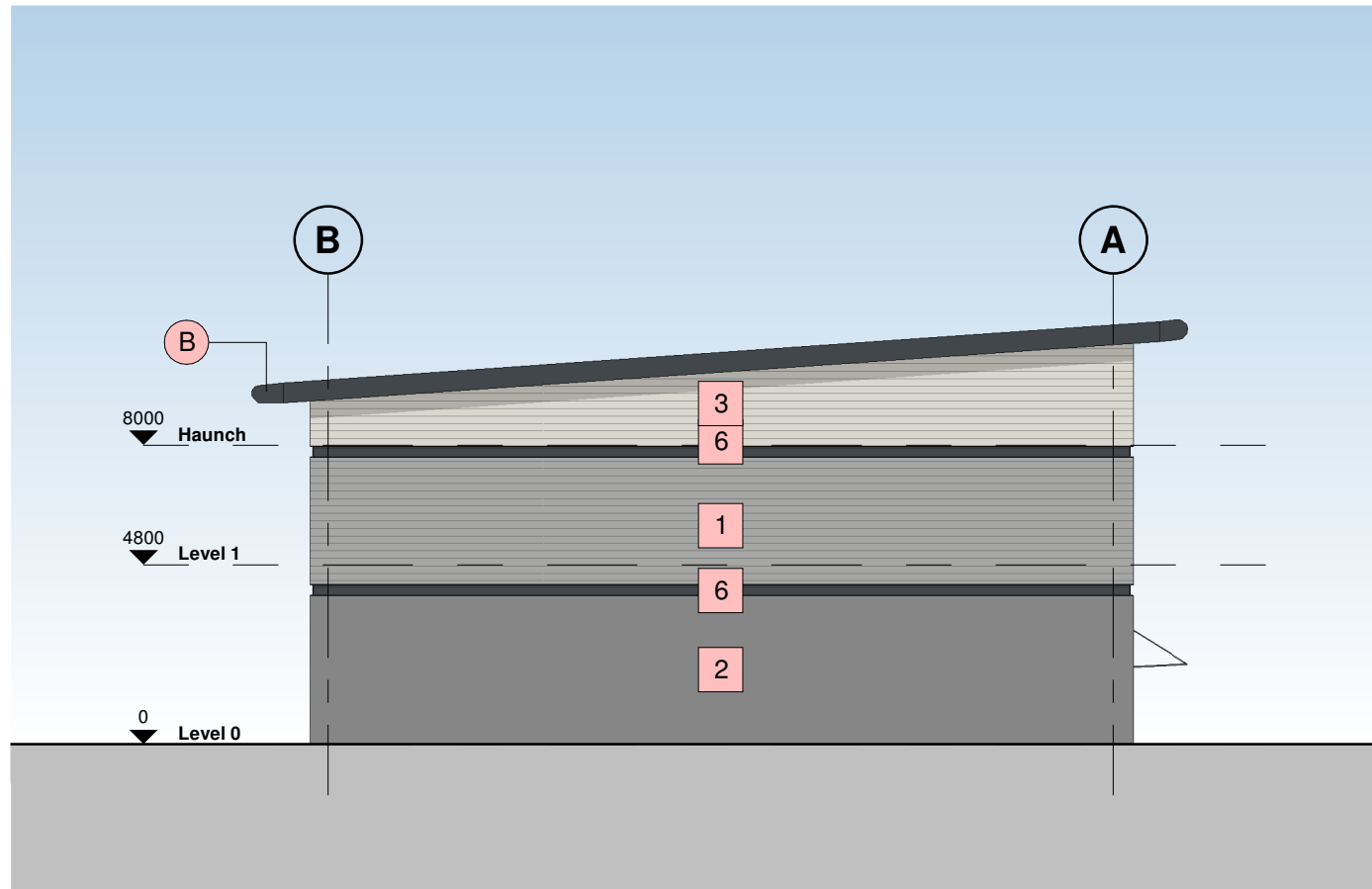
2 South East Elevation  
1 : 200



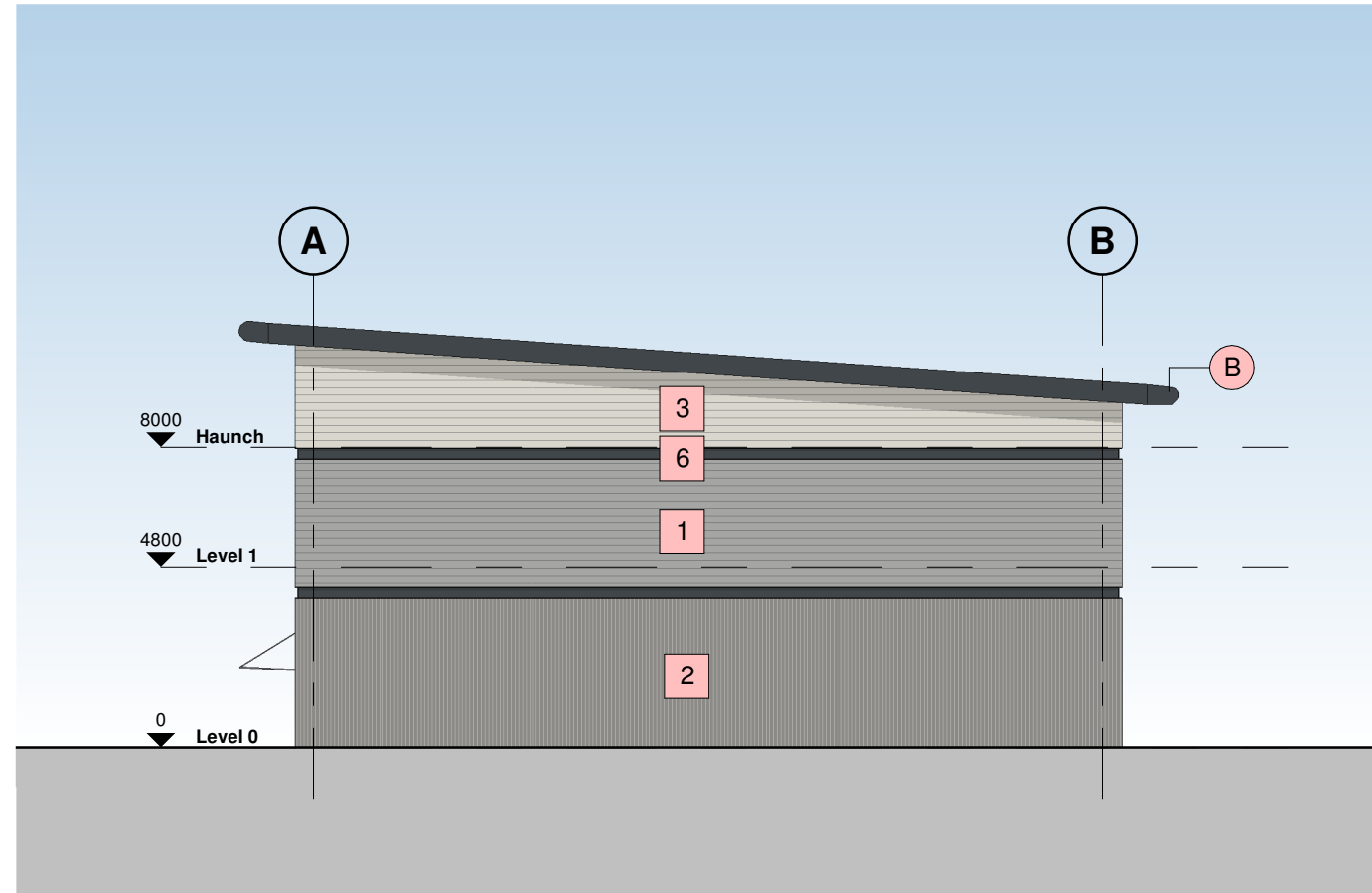
5 Elevation Key Plan  
1 : 500

### Building Fabric Materials Schedule

- 1 Wall Type 1 - Built-up metal cladding (twin skinned, insulated)  
Horizontally Laid Mini Sinusoidal Profile - White Aluminium (RAL 9006)
- 2 Wall Type 2 - Built-up metal cladding (twin skinned, insulated)  
Vertically Laid Trapezoidal Profile - Grey Aluminium (RAL 9007)
- 3 Wall Type 3 - Built-up metal cladding (twin skinned, insulated)  
Horizontally Laid Mini Sinusoidal Profile - Hamlet (RAL 9002)
- 4 Roof type 1, Built up metal cladding - Trapezoidal Profile -  
Goosewing Grey (RAL 7038) with 10% integrated GRP rooflights
- 5 Aluminium Curtain Wall stick frame system  
PPC Anthracite (RAL 7016) framing, double glazed infills (solar control)
- 6 Feature PFC Channel  
Anthracite (RAL 7016)
- A Operational Door - Level Access  
Sectional insulated shutter, plastisol coated finish, Anthracite (RAL 7016)
- B Eaves & Verge bullnoses  
Aluminium profiles, PPC finish Anthracite (RAL 7016)
- C Personnel Access / Escape doorset - Warehouse  
Galvanised steel, PPC finish matched to cladding, thermally insulated core
- D Rainwater Goods  
Gravity fed rain water system with Aluminium rainwater downpipes  
Colour to match cladding as required.
- E Glazed Canopy  
Proprietary glazed canopy over doors



3 North East Elevation  
1 : 200



4 South West Elevation  
1 : 200

P4	Layout Updated	BC	06.09.21	DC
P3	Update Issue	BC	19.08.21	DC
P2	First Issue	BC	29.07.21	DC
P1	First Issue of Drawing	BE	28.05.21	DC
Rev	Revision Details	Drawn	Date	Checked

**C4 Projects**  
Quayside,  
Wilderspool Business Park,  
Stockton Heath,  
W44 6HL  
t: 01925 751 852  
e: info@c4projects.co.uk  
www.c4projects.co.uk

Project Management • Architecture • Building Surveying • Cost Consultancy

Client  
WUKPG

Project  
Vauxhall Industrial Estate  
Stockport

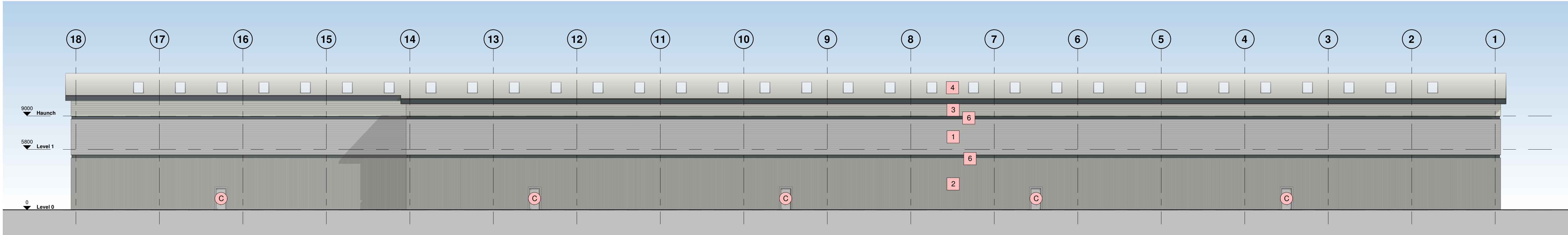
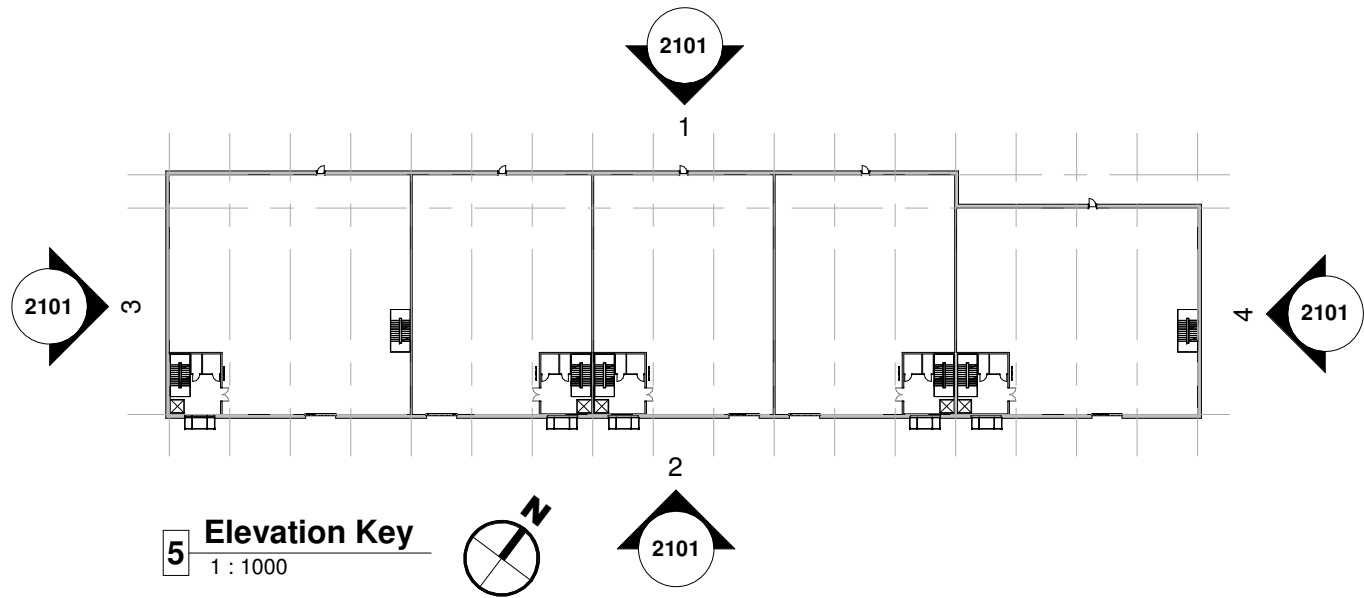
Drawing Title  
Unit 3 - Proposed Elevations

Status Purpose of Issue  
S2 SUITABLE FOR INFORMATION

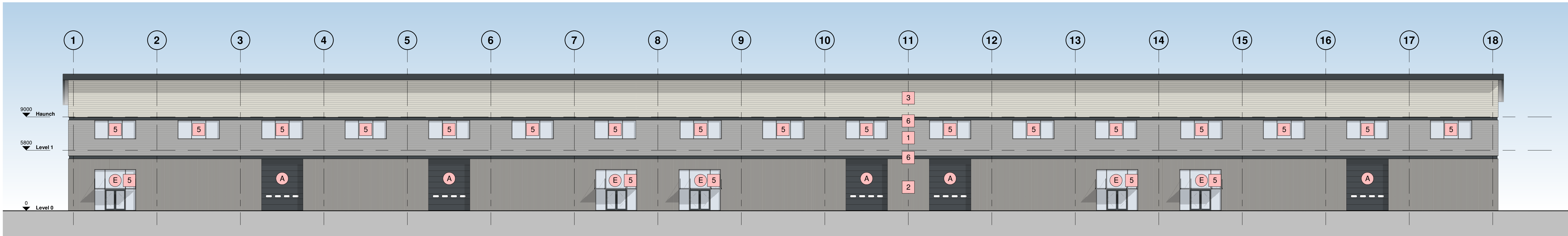
Drawn by BE Created May 21  
C4 Job no. 21093 Scale As indicated @ A1

Drg no. 21093-C4P-V3-ZZ-DR-A-2101 Rev P4





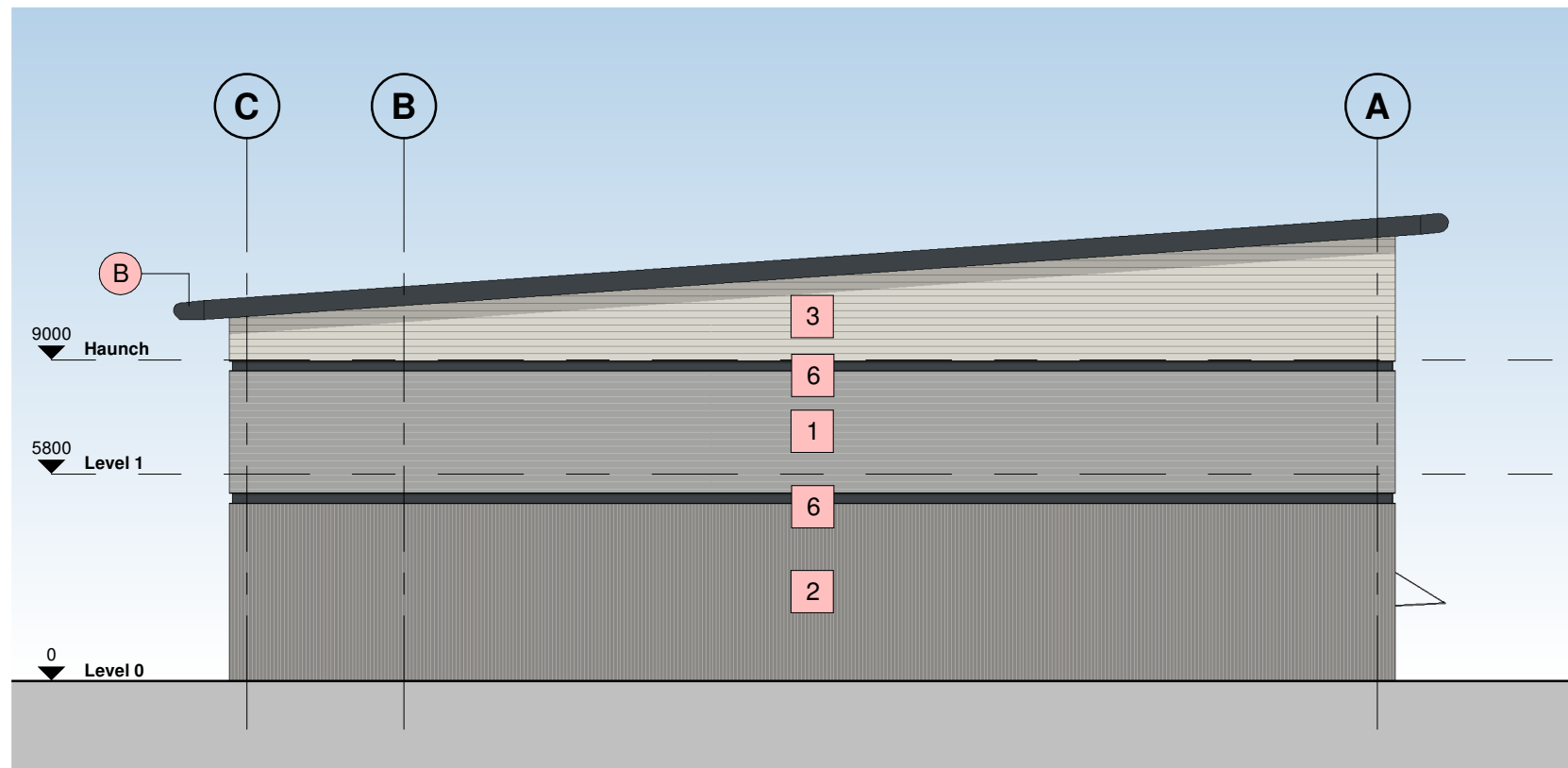
1 North West Elevation  
1 : 200



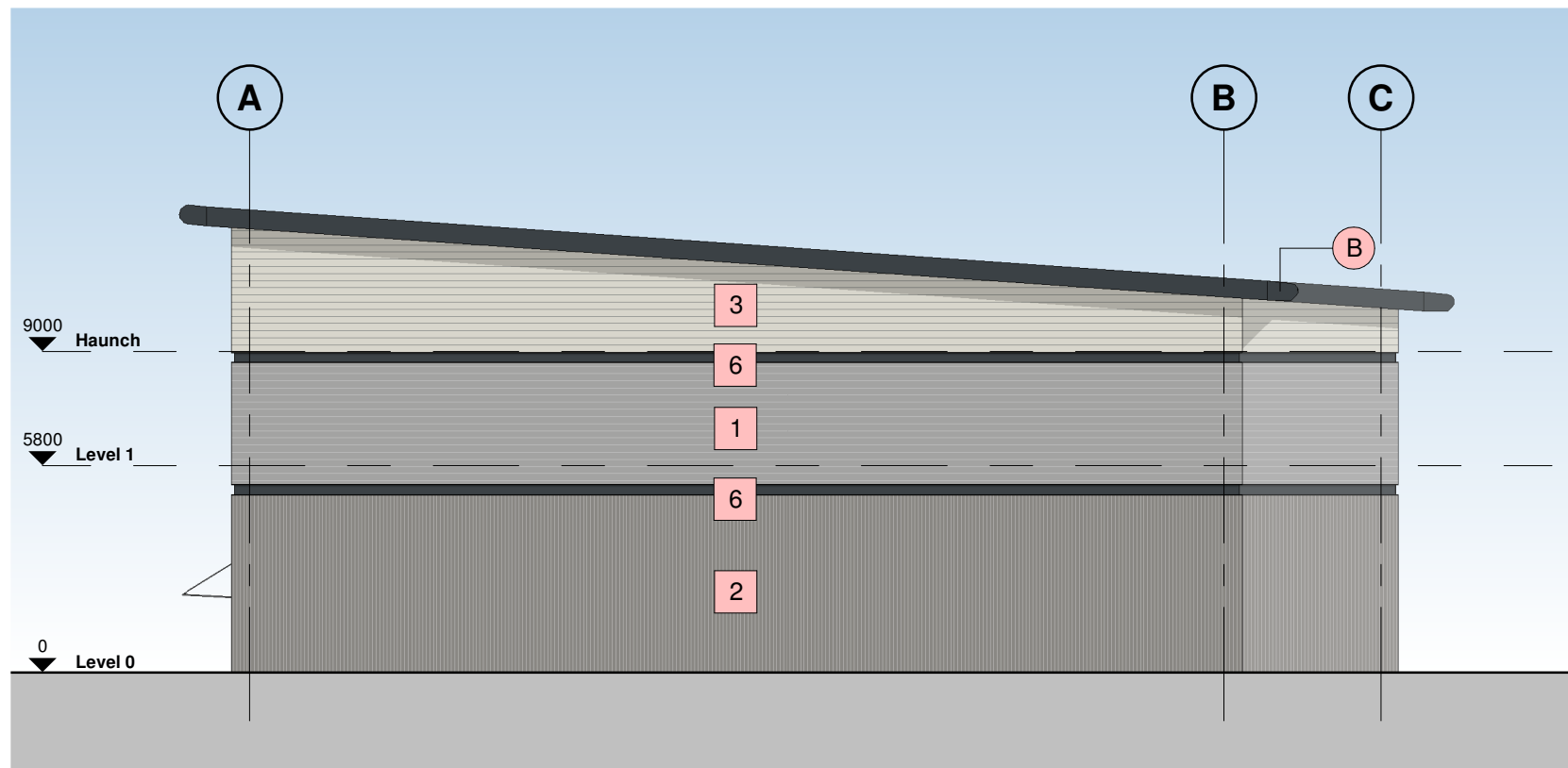
2 South East Elevation  
1 : 200

### Building Fabric Materials Schedule

- |   |   |
|---|---|
| 1 | Wall Type 1 - Built-up metal cladding (twin skinned, insulated)<br>Horizontally Laid Mini Sinusoidal Profile - White Aluminium (RAL 9006) |
| 2 | Wall Type 2 - Built-up metal cladding (twin skinned, insulated)<br>Vertically Laid Trapezoidal Profile - Grey Aluminium (RAL 9007)        |
| 3 | Wall Type 3 - Built-up metal cladding (twin skinned, insulated)<br>Horizontally Laid Mini Sinusoidal Profile - Hamlet (RAL 9002)          |
| 4 | Roof type 1, Built up metal cladding - Trapezoidal Profile -<br>Goosewing Grey (RAL 7038) with 10% integrated GRP rooflights              |
| 5 | Aluminium Curtain Wall stick frame system<br>PPC Anthracite (RAL 7016) framing, double glazed infills (solar control)                     |
| 6 | Feature PFC Channel<br>Anthracite (RAL 7016)  |
| A | Operational Door - Level Access<br>Sectional insulated shutter, plastisol coated finish, Anthracite (RAL 7016)                            |
| B | Eaves & Verge bullnoses<br>Aluminium profiles, PPC finish Anthracite (RAL 7016)   |
| C | Personnel Access / Escape doorset - Warehouse<br>Galvanised steel, PPC finish matched to cladding, thermally insulated core               |
| D | Rainwater Goods<br>Gravity fed rain water system with Aluminium rainwater downpipes<br>Colour to match cladding as required.              |
| E | Glazed Canopy<br>Proprietary glazed canopy over doors   |



3 South West Elevation  
1 : 200



4 North East Elevation  
1 : 200

P5	Layout Updated	BC	06.09.21	DC
P4	Update Issue	BC	19.08.21	DC
P3	First Issue	BC	29.07.21	DC
P2	Update Issue	BC	21.07.21	DC
P1	First Issue	BC	08.07.21	DC

Rev	Revision Details	Drawn	Date	Checked
-----	------------------	-------	------	---------

**C4 Projects**

Quayside,  
Wilderspool Business Park,  
Stockton Heath,  
W44 6HL,  
t: 01925 751 852  
e: info@c4projects.co.uk  
www.c4projects.co.uk

Project Management • Architecture • Building Surveying • Cost Consultancy

Client  
WUKPG

Project  
Vauxhall Industrial Estate  
Stockport

Drawing Title  
Unit 4 - Proposed Elevations

Status Purpose of Issue  
S2 SUITABLE FOR INFORMATION

Drawn by	BC	Created	July 21
C4 Job no.	21093	Scale	As indicated @ A1

Dwg no.	21093-C4P-V4-ZZ-DR-A-2101	Rev	P5
---------	---------------------------	-----	----

This drawing is © C4 Projects and is not to be copied, reproduced or re-distributed either in whole or in part without the prior written permission of the originator.

The originator shall have no responsibility for any liability, loss, cost, damage or expense arising from or relating to any use of this document other than for its intended purpose on this project.

This drawing shall be read in conjunction with all other relevant drawings, specifications and associated documentation. Any discrepancies, errors or omissions are to be reported to the originator before proceeding with work.

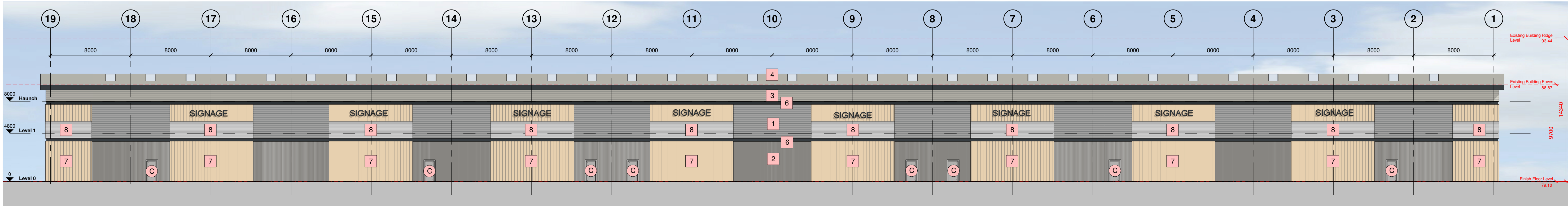
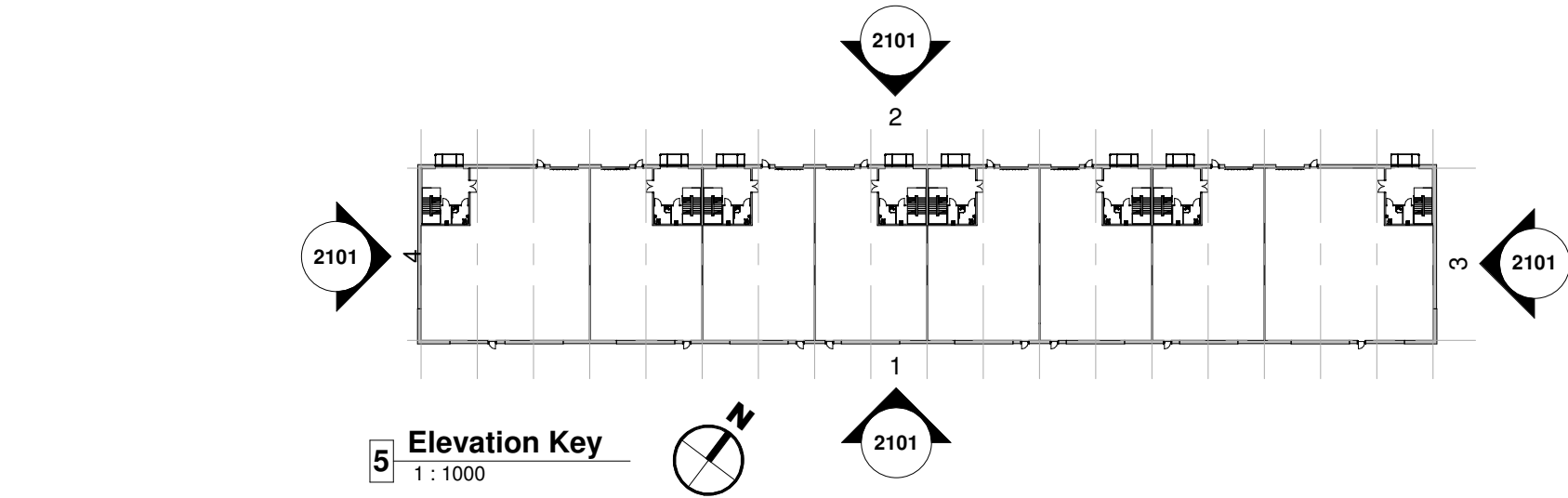
All dimensions are to be checked on site by the contractor prior to proceeding with any work. This drawing shall not be scaled to ascertain any dimensions, work to figured dimensions only.

**DISCLAIMER**  
When this drawing is issued in CAD, it is an uncontrolled version issued for information only, to enable the recipient to prepare their own documents/ drawings for which they are solely responsible.

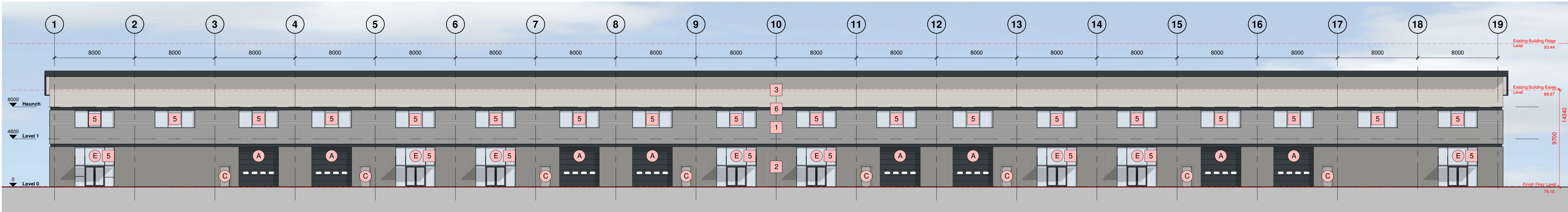
**SOFTWARE INTEROPERABILITY**  
C4 Projects prepared this drawing using Autodesk REVIT Architecture.

C4 Projects does not accept liability for any loss or degradation of any information held in the drawing resulting from the translation from the original file format to any other file format or from the recipients reading of it in any other programme.

Hazard Identification		
ref	hazard	date



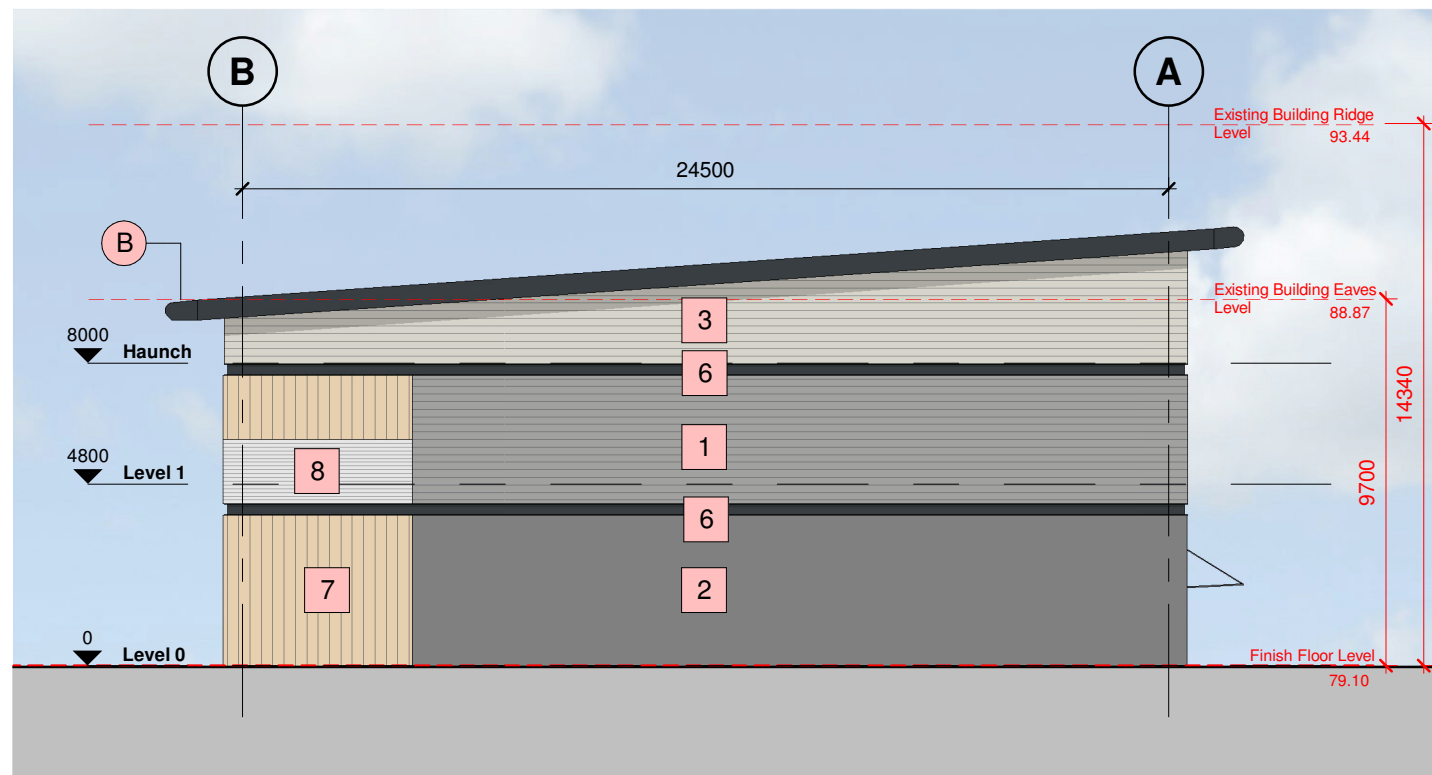
1 South East Elevation  
1 : 200



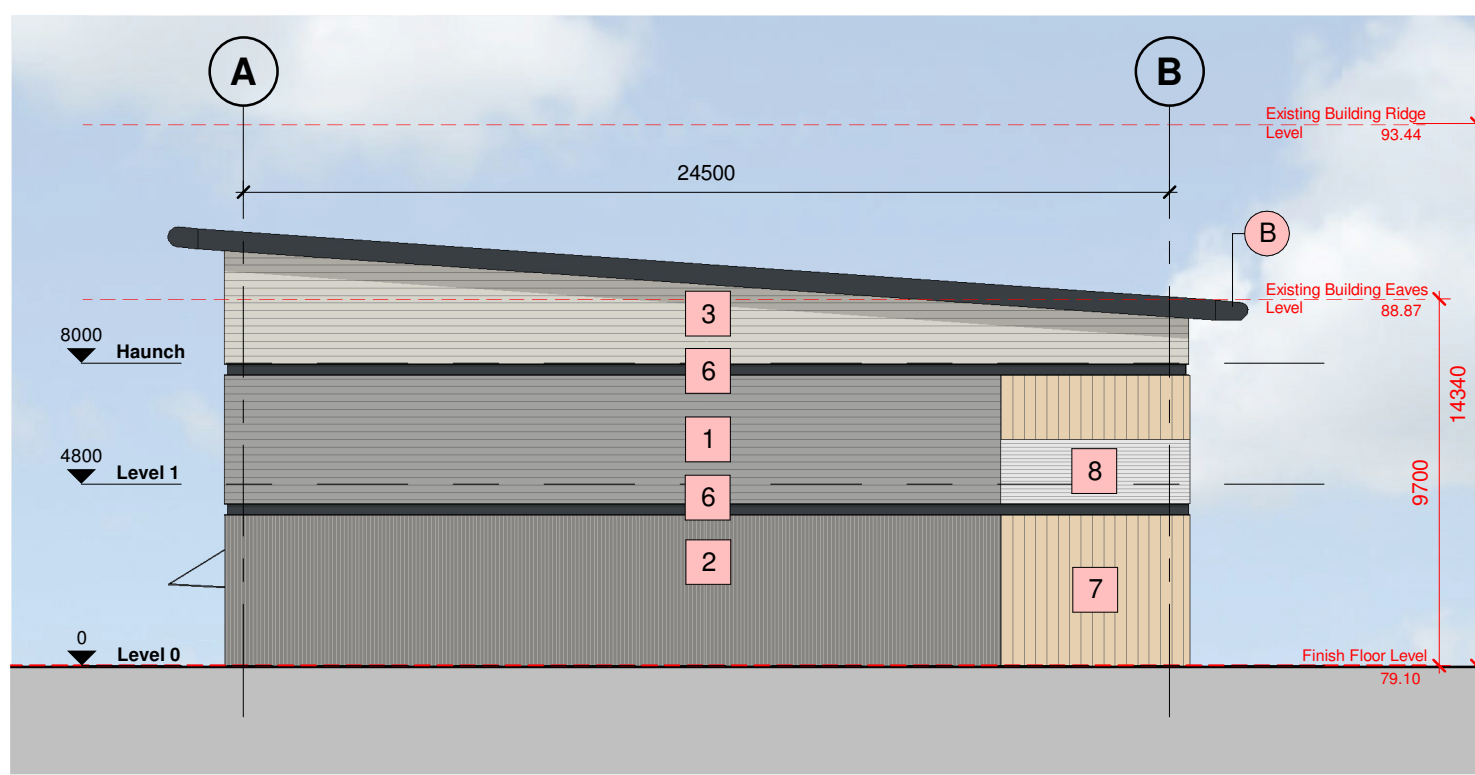
2 North West Elevation  
1 : 200

### Building Fabric Materials Schedule

- 1 Wall Type 1 - Built-up metal cladding (twin skinned, insulated)  
Horizontally Laid Mini Sinusoidal Profile - White Aluminium (RAL 9006)
- 2 Wall Type 2 - Built-up metal cladding (twin skinned, insulated)  
Vertically Laid Trapezoidal Profile - Grey Aluminium (RAL 9007)
- 3 Wall Type 3 - Built-up metal cladding (twin skinned, insulated)  
Horizontally Laid Mini Sinusoidal Profile - Hamlet (RAL 9002)
- 4 Roof type 1, Built up metal cladding - Trapezoidal Profile -  
Goosewing Grey (RAL 7038) with 10% intergrated GRP rooflights
- 5 Aluminium Curtain Wall stick frame system  
PPC Anthracite (RAL 7016) framing, double glazed infills (solar control)
- 6 Feature PFC Channel  
Anthracite (RAL 7016)
- 7 Built-up metal Cladding (twin skinned, insulated)  
Western Red Cedar Finish
- 8 Translucent Polycarb
- A Operational Door - Level Access  
Sectional insulated shutter, plastisol coated finish, Anthracite (RAL 7016)
- B Eaves & Verge bullnoses  
Aluminium profiles, PPC finish Anthracite (RAL 7016)
- C Personnel Access / Escape doorset - Warehouse  
Galvanised steel, PPC finish matched to cladding, thermally insulated core
- D Rainwater Goods  
Gravity fed rain water system with Aluminium rainwater downpipes  
Colour to match cladding as required.
- E Glazed Canopy  
Proprietary glazed canopy over doors



3 North East Elevation  
1 : 200



4 South West Elevation  
1 : 200

P8	Existing Ridge and Eaves shown	JN	22.02.22	BC
P7	Timber Cladding added	JN	09.02.22	DC
P6	Layout Updated	BC	06.09.21	DC
P5	Update Issue	BC	19.08.21	DC
P4	First Floor Added	BC	30.07.21	DC
P3	First Issue	BC	29.07.21	DC
P2	Update Issue	BC	21.07.21	DC
P1	First Issue	BC	08.07.21	DC
Rev	Revision Details	Drawn	Date	Checked

**C4 Projects**  
Quayside,  
Wilderspool Business Park,  
Stockton Heath,  
W44 6HL  
t: 01925 751 852  
e: info@c4projects.co.uk  
www.c4projects.co.uk

Project Management • Architecture • Building Surveying • Cost Consultancy

Client  
**WUKPG**

Project  
**Vauxhall Industrial Estate  
Stockport**

Drawing Title  
**Unit 5 - Proposed Elevations**

Status Purpose of Issue  
**S2 SUITABLE FOR INFORMATION**

Drawn by BC Created July 21  
C4 Job no. 21093 Scale As indicated @ A1

Drg no. 21093-C4P-V5-ZZ-DR-A-2101 Rev P8



This drawing is © C4 Projects and is not to be copied, reproduced or re-distributed either in whole or in part without the prior written permission of the originator.

The originator shall have no responsibility for any liability, loss, cost, damage or expense arising from or relating to any use of this document other than for its intended purpose on this project.

This drawing shall be read in conjunction with all other relevant drawings, specifications and associated documentation. Any discrepancies, errors or omissions are to be reported to the originator before proceeding with work.

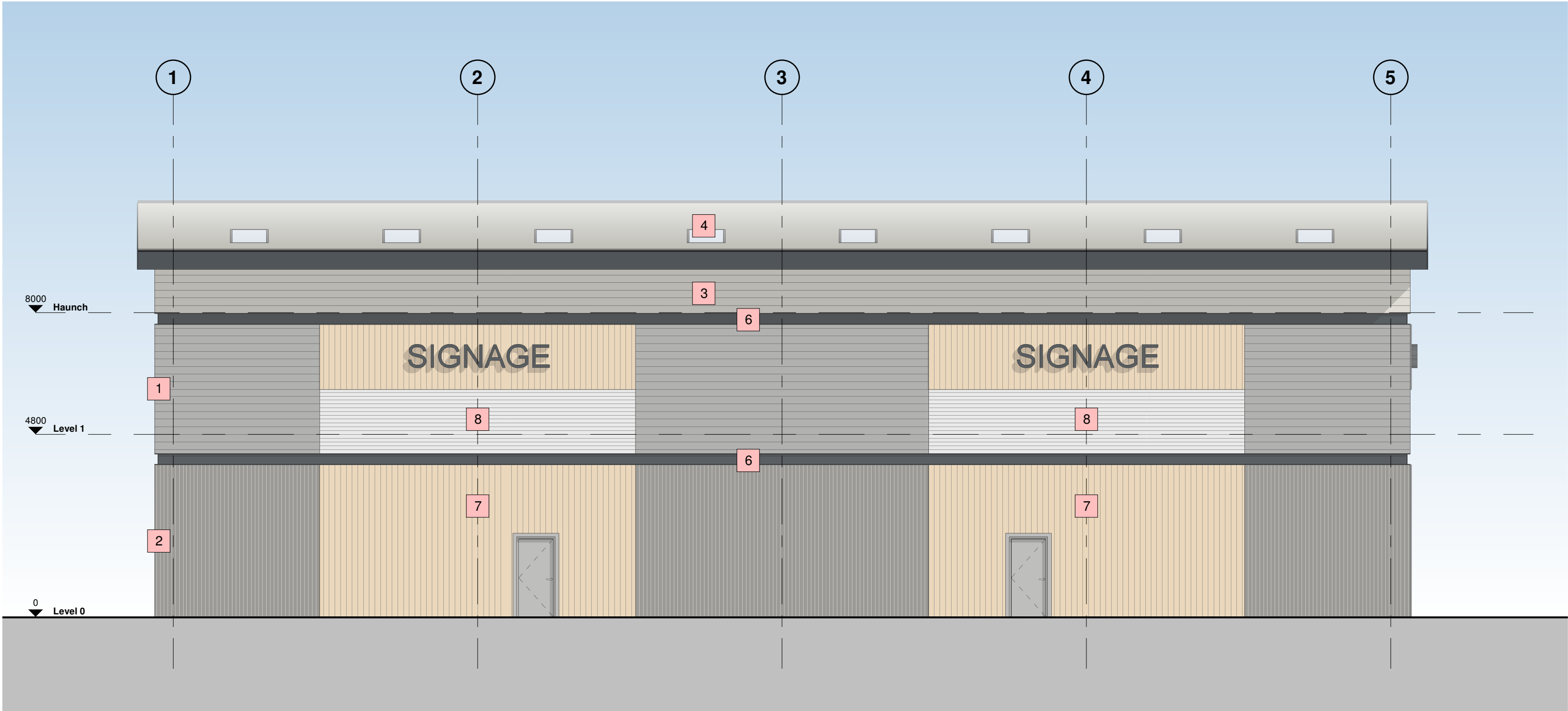
All dimensions are to be checked on site by the contractor prior to proceeding with any work. This drawing shall not be scaled to ascertain any dimensions, work to figured dimensions only.

**DISCLAIMER**  
When this drawing is issued in CAD, it is an uncontrolled version issued for information only, to enable the recipient to prepare their own documents/ drawings for which they are solely responsible.

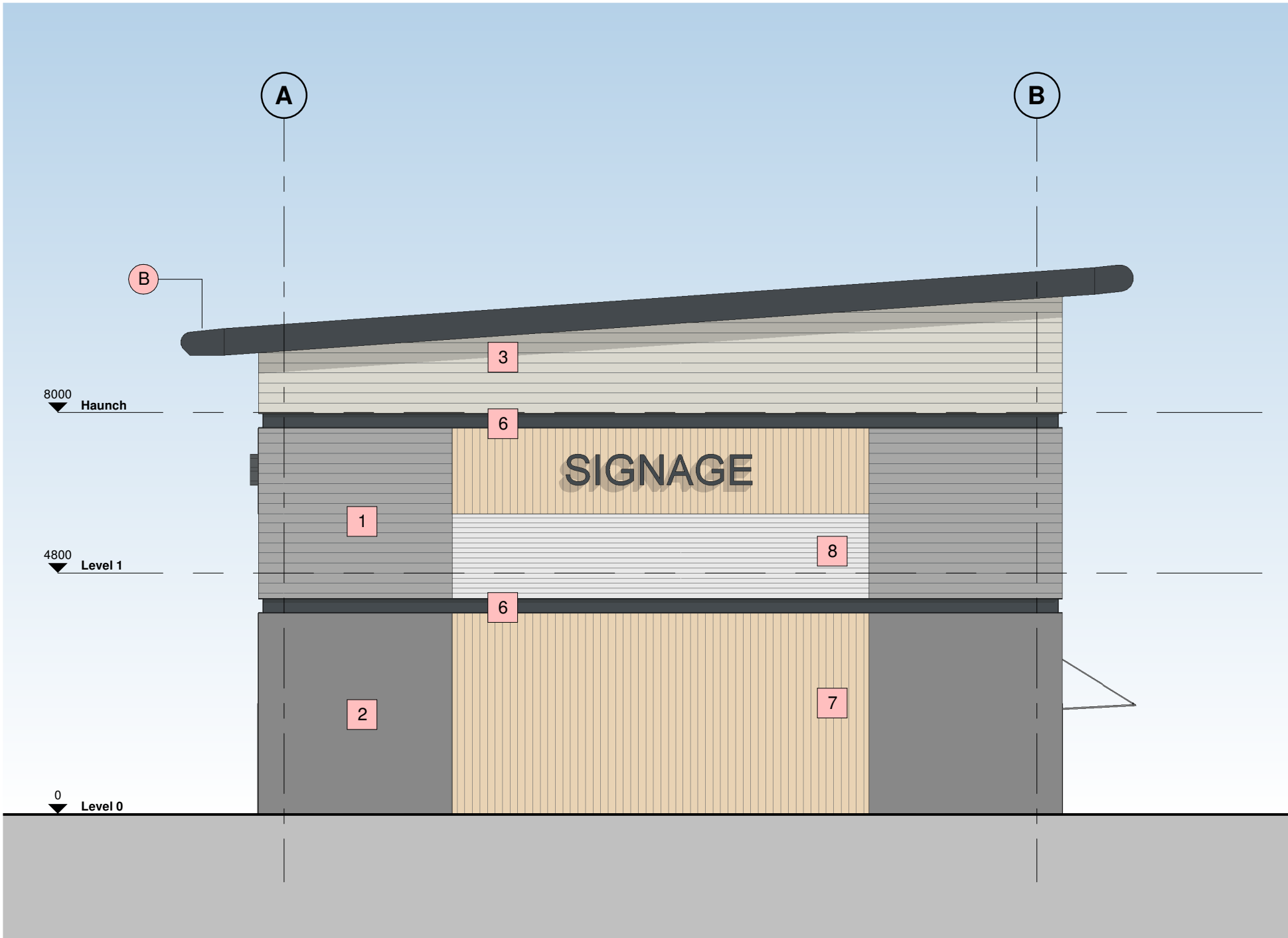
**SOFTWARE INTEROPERABILITY**  
C4 Projects prepared this drawing using Autodesk REVIT Architecture.

C4 Projects does not accept liability for any loss or degradation of any information held in the drawing resulting from the translation from the original file format to any other file format or from the recipient's reading of it in any other programme.

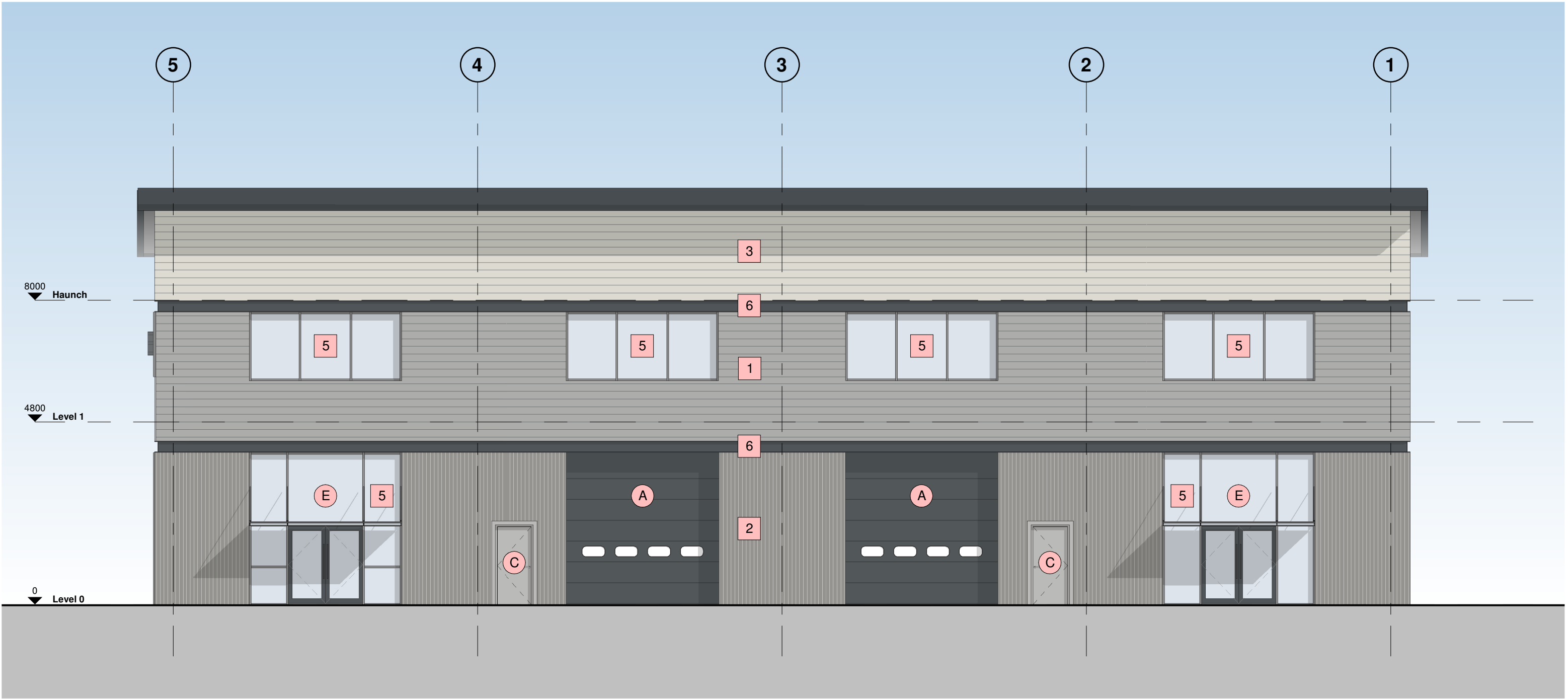
Hazard Identification		
ref	hazard	date



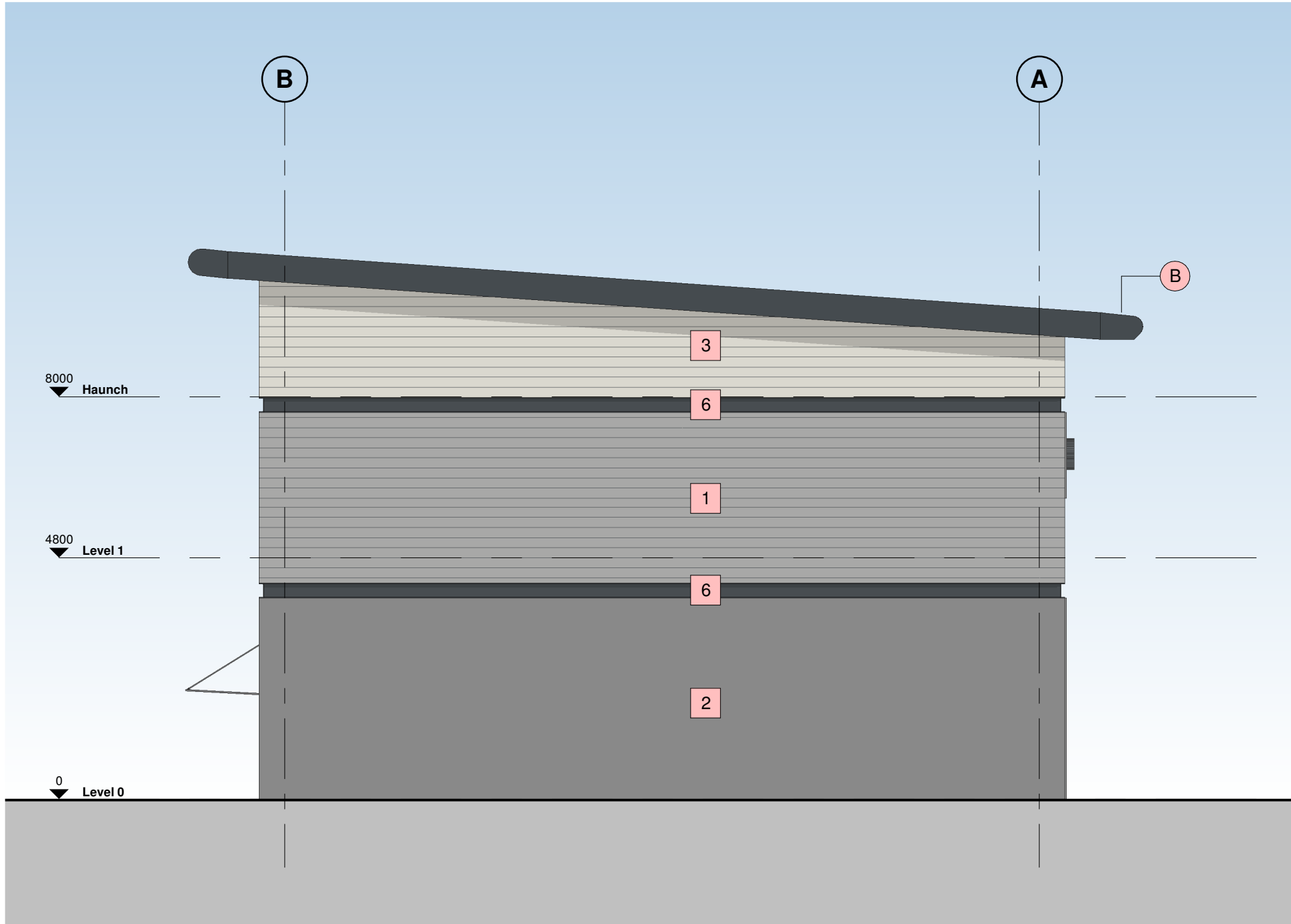
1 North West Elevation  
1 : 100



4 South West Elevation  
1 : 100



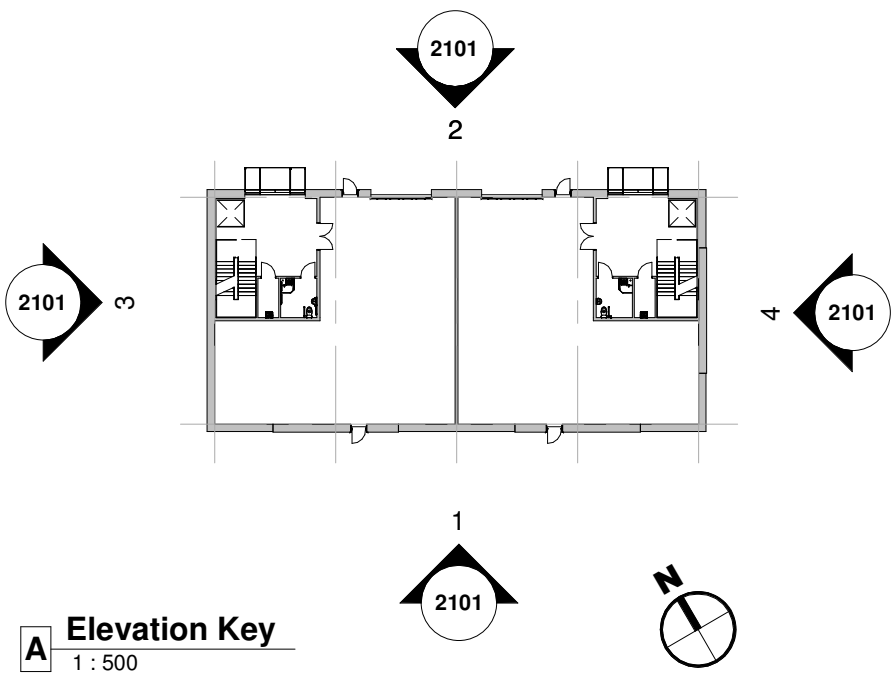
2 South East Elevation  
1 : 100



3 North East Elevation  
1 : 100

#### Building Fabric Materials Schedule

- |   |   |   |  |
|---|---|---|--|
| 1 | Wall Type 1 - Built-up metal cladding (twin skinned, insulated)<br>Horizontally Laid Mini Sinusoidal Profile - White Aluminium (RAL 9006) | A | Operational Door - Level Access<br>Sectional insulated shutter, plastisol coated finish, Anthracite (RAL 7016)               |
| 2 | Wall Type 2 - Built-up metal cladding (twin skinned, insulated)<br>Vertically Laid Trapezoidal Profile - Grey Aluminium (RAL 9007)        | B | Eaves & Verge bullnoses<br>Aluminium profiles, PPC finish Anthracite (RAL 7016)  |
| 3 | Wall Type 3 - Built-up metal cladding (twin skinned, insulated)<br>Horizontally Laid Mini Sinusoidal Profile - Hamlet (RAL 9002)          | C | Personnel Access / Escape doorset - Warehouse<br>Galvanised steel, PPC finish matched to cladding, thermally insulated core  |
| 4 | Roof type 1, Built up metal cladding - Trapezoidal Profile -<br>Goosewing Grey (RAL 7038) with 10% intergrated GRP rooflights             | D | Rainwater Goods<br>Gravity fed rain water system with Aluminium rainwater downpipes<br>Colour to match cladding as required. |
| 5 | Aluminium Curtain Wall stick frame system<br>PPC Anthracite (RAL 7016) framing, double glazed infills (solar control)                     | E | Glazed Canopy<br>Proprietary glazed canopy over doors  |
| 6 | Feature PFC Channel<br>Anthracite (RAL 7016)  |   |  |
| 7 | Built-up metal Cladding (twin skinned, insulated)<br>Western Red Cedar Finish   |   |  |
| 8 | Translucent Polycarb  |   |  |



P7	Planning issue	VV	22.02.22	BC
P6	Rooflights Updated	BC	27.09.21	DC
P5	Unit 6 Updated	AC	22.09.21	DC
P4	Layout and Elevations Updated	BC	07.09.21	DC
P3	Layout Updated	BC	06.09.21	DC
P2	Update Issue	BC	19.08.21	DC
P1	First Issue	BC	29.07.21	DC
Rev	Revision Details	Drawn	Date	Checked

**C4 Projects**  
Quayside,  
Wilderspool Business Park,  
Stockton Heath,  
W44 6HL,  
t: 01925 751 852  
e: info@c4projects.co.uk  
www.c4projects.co.uk

Project Management • Architecture • Building Surveying • Cost Consultancy

Client  
**WUKPG**

Project  
Vauxhall Industrail Estate  
Stockport

Drawing Title  
Unit 6 - Proposed Elevations

Status Purpose of Issue  
**S2 SUITABLE FOR INFORMATION**

Drawn by AC Created September 21  
C4 Job no. 21093 Scale As indicated @ A1

Drg no. 21093-C4P-V6-ZZ-DR-A-2101 Rev P7