



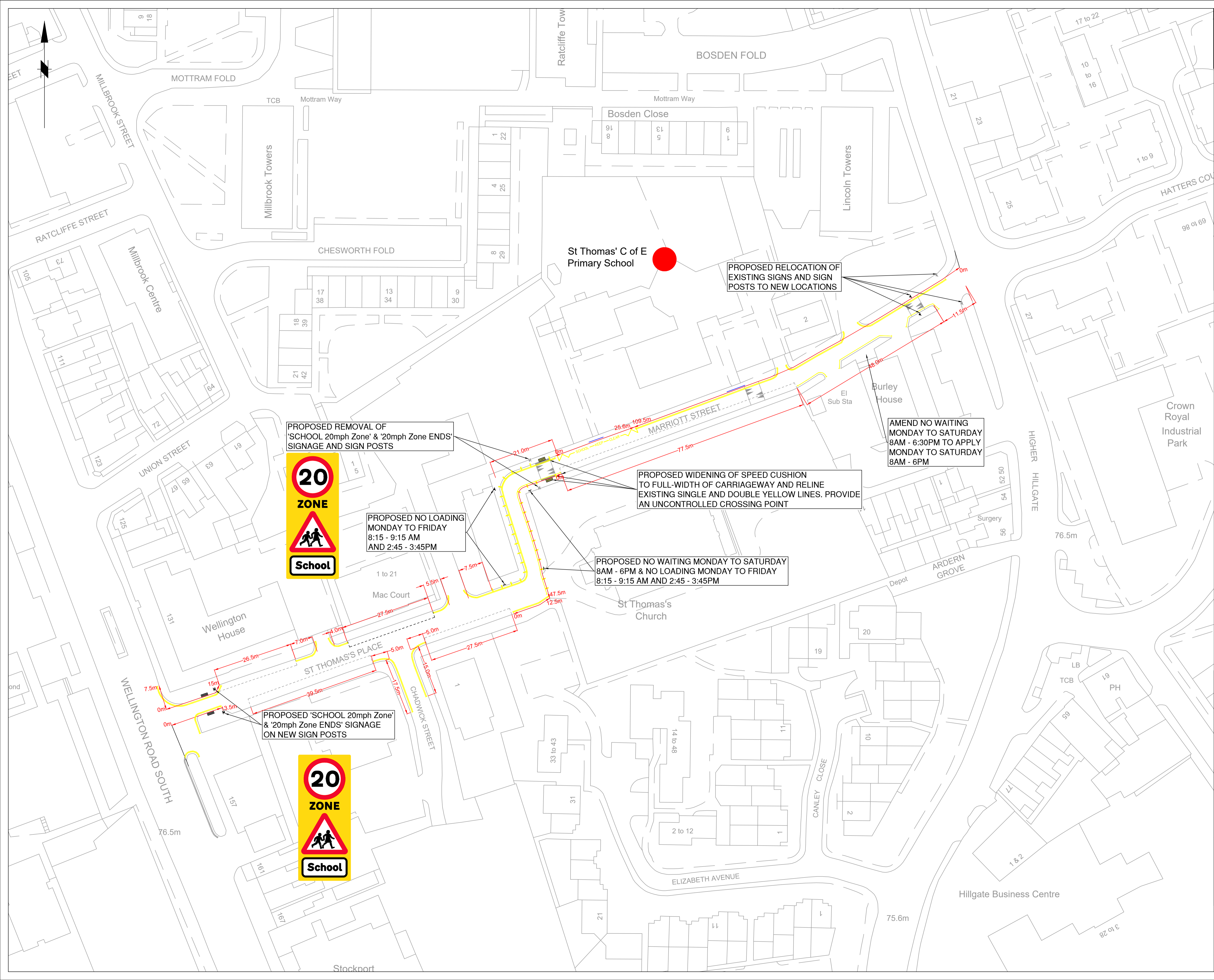


KEY:

	PROPOSED: UNCONTROLLED TACTILE PAVING
	CARRIAGEWAY
	SIGN & SIGN POST
	SIGN
EXISTING:	
	UNCONTROLLED TACTILE PAVING
	ROAD MARKINGS
	SIGN & SIGN POST
	GUARDRAIL



PROPOSED REMOVAL OF 'SCHOOL 20mph Zone' & '20mph Zone ENDS' SIGNAGE AND SIGN POSTS



PROPOSED NO LOADING MONDAY TO FRIDAY 8:15 - 9:15 AM AND 2:45 - 3:45PM

PROPOSED WIDENING OF SPEED CUSHION TO FULL-WIDTH OF CARRIAGEWAY AND RELINE EXISTING SINGLE AND DOUBLE YELLOW LINES. PROVIDE AN UNCONTROLLED CROSSING POINT

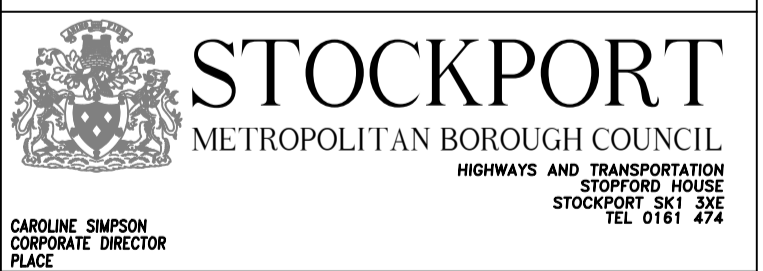
AMEND NO WAITING MONDAY TO SATURDAY 8AM - 6:30PM TO APPLY MONDAY TO SATURDAY 8AM - 6PM

PROPOSED NO WAITING MONDAY TO SATURDAY 8AM - 6PM & NO LOADING MONDAY TO FRIDAY 8:15 - 9:15 AM AND 2:45 - 3:45PM

PROPOSED 'SCHOOL 20mph Zone' & '20mph Zone ENDS' SIGNAGE ON NEW SIGN POSTS



Rev.	Drawn	Checked	Date	Revision Details
AMENDMENTS				



ROAD SAFETY AROUND SCHOOLS

ST THOMAS C OF E PRIMARY SCHOOL TRO PLAN

Drawn	Engineer	Checked	Approved
AD	AD	CAS	AM
Date	Date	Date	Date
04/22	04/22	06/22	06/22
Size	Scale		
A1	1:500		

Drawing No. F/0305/27/ST/002 Revision A