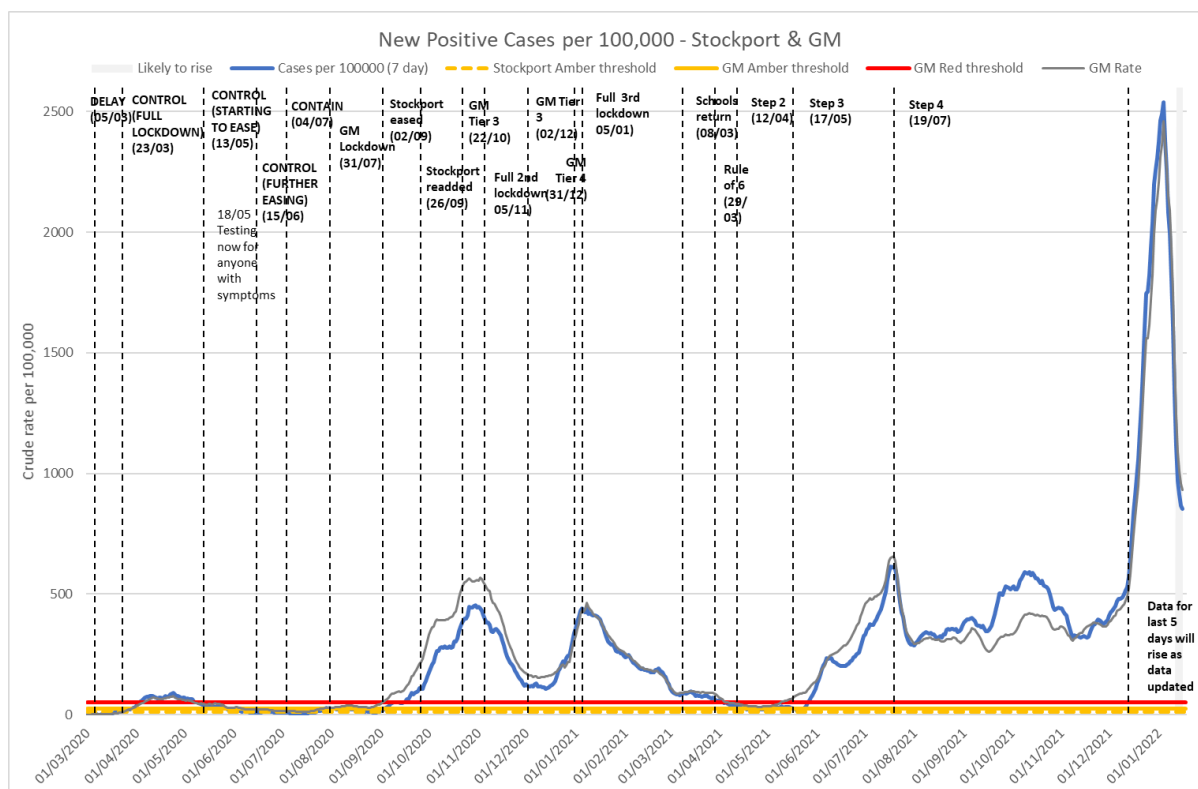


## COVID-19 Update for Adults Care and Health Scrutiny Committee 20/01/22

### 1. Assessment of current position

1.1 Latest data shows that in Stockport we have had an average of 331 new cases per day over the last week. This gives us a rate of 794.8 per 100,000 population. This is below the Greater Manchester average of 886.2 per 100,000 and the England average of 1,032 per 100,000.



1.2 Rates for all age groups apart from 0-9 are falling:

0-9 = 1,127.2

10-19 = 812.1

20-29 = 815.4

30-39 = 1,202.1

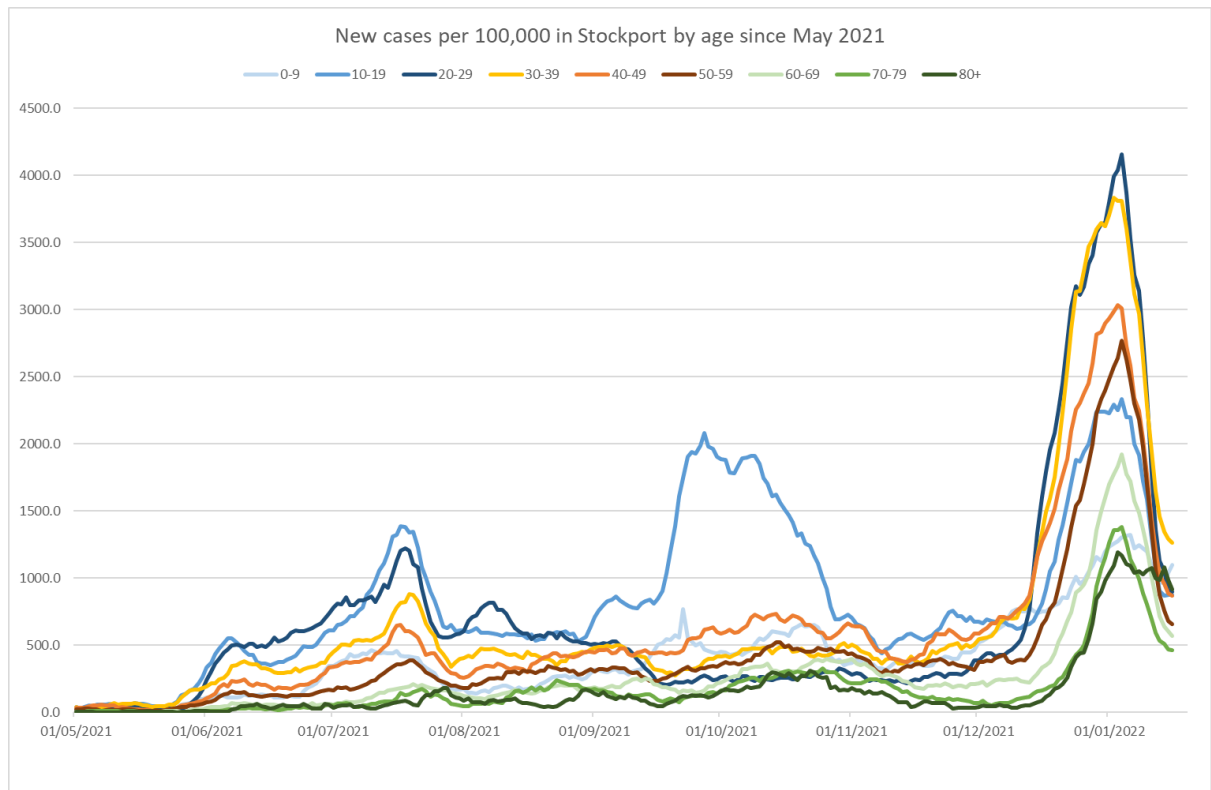
40-49 = 795.8

50-59 = 579.5

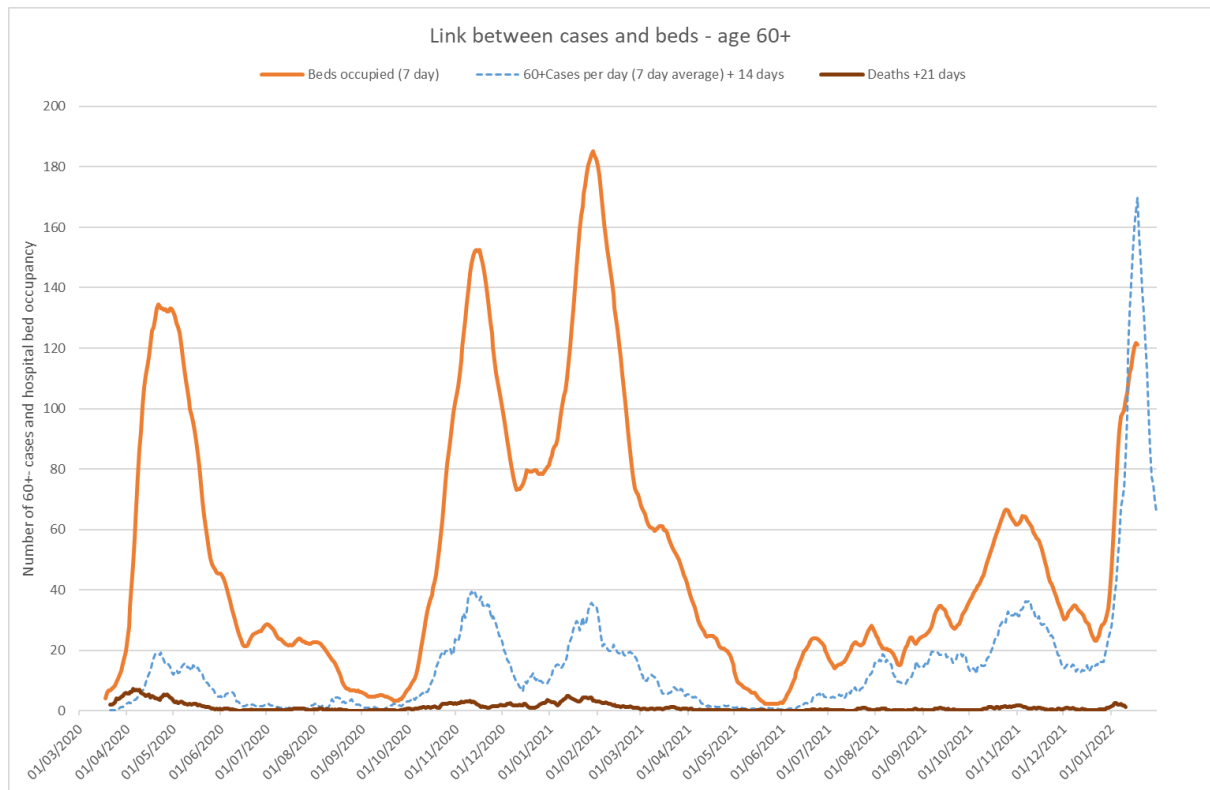
60-69 = 517.1

70-79 = 417.8

80+ = 753.4.



- 1.3 Geographically across Stockport, there continues to be regular movement in which MSOA area has highest rates, with no singular 'hotspot' or cluster on a geographical basis ([Interactive map of cases | Coronavirus in the UK \(data.gov.uk\)](#)).
- 1.4 Where type is known, 99.4% of all cases are the omicron variant.
- 1.5 The number of beds occupied due to COVID-19 at Stockport NHS Foundation Trust have varied between The number of beds occupied at SNHSFT have varied between 114 and 128 over the last week and levels are stabilising. As of 18<sup>th</sup> January 117 beds were occupied. The demand on ITU bed has been far lower in this wave than in previous waves, thanks in great part to vaccination. As of 18<sup>th</sup> January there is 1 ITU bed occupied due to COVID-19.
- 1.6 The chart below shows the link between diagnosed cases (all age / 60+) offset by 14 days and bed occupancy. This demonstrates the weakened link between cases and hospitalisations and deaths, also demonstrating that this link is not entirely broken.



## 2. Vaccine uptake

2.1 Stockport has the highest overall uptake of first doses for all over 12s, and is above the GM average for all age groups, with an uptake of 85.5% compared to 78.0% for Greater Manchester overall. Stockport also has the highest overall uptake of second doses for all over 16s, and is above the GM average for all age groups at 83.8% compared to 75.6% for Greater Manchester overall.

Stockport is above the GM average for booster doses for those currently eligible, and is second highest, with 82.8% compared to 75.3% for Greater Manchester overall.

### 2.2 To end of 18th January:

- 233,975 Stockport patients have received their first dose, 86.9% of 18+
  - 70.2% of those aged 16-17 and 56.9% of 12-15 year olds.
  - 474 first doses given in the last week
- 218,318 Stockport patients have received the second dose, 84.4% of 18+
  - 47.7% of those aged 16-17
  - 894 second doses given in the last week
- 174,574 Stockport patients have received the booster dose, 68.7% of 18+
  - 2,365 booster doses given in the last week
- For those over 50 years, 94.0% of people have had the first dose, 87.3% have had the booster. 7,510 people remain unvaccinated.
- For those who are clinically vulnerable 95.2% of those who are extremely vulnerable have been vaccinated 90.5% of those who have other priority conditions have been vaccinated 4,911 clinically vulnerable people remain unvaccinated, 3,260 aged <50.
- Taken together this means there are 10,770 eligible people in who are aged 50+ or clinically vulnerable who have not yet had their first vaccine.

- Over 626,867 doses have been given over the course of the programme, with a further 34,700 boosters due.

Age group ^	Eligible	Dose 1 by end 18 <sup>th</sup> Jan	Dose 2 by end 18 <sup>th</sup> Jan	Booster by end 18 <sup>th</sup> Jan	% dose 1 by end 18 <sup>th</sup> Jan	% dose 2 by end 18 <sup>th</sup> Jan	% booster total by end 18 <sup>th</sup> Jan
80+	16,984	16,459	16,394	15,982	96.9%	96.5%	94.1%
75-79	12,470	12,073	12,021	11,746	96.8%	96.4%	94.2%
70-74	15,614	14,960	14,884	14,516	95.8%	95.3%	93.0%
70+	<b>45,068</b>	<b>43,492</b>	<b>43,299</b>	<b>42,244</b>	<b>96.5%</b>	<b>96.1%</b>	<b>93.7%</b>
65-69	16,080	15,224	15,108	14,500	94.7%	94.0%	90.2%
60-64	19,036	17,765	17,583	16,412	93.3%	92.4%	86.2%
55-59	22,147	20,436	20,151	18,249	92.3%	91.0%	82.4%
50-54	22,348	20,252	19,923	17,479	90.6%	89.1%	78.2%
50 +	<b>124,679</b>	<b>117,169</b>	<b>116,064</b>	<b>108,884</b>	<b>94.0%</b>	<b>93.1%</b>	<b>87.3%</b>
40-49	42,830	36,534	35,565	28,218	85.3%	83.0%	65.9%
30-39	46,611	36,728	34,884	23,306	78.8%	74.8%	50.0%
18-29	39,777	30,296	27,729	13,967	76.2%	69.7%	35.1%
<b>TOTAL 18+</b>	<b>253,897</b>	<b>220,727</b>	<b>214,242</b>	<b>174,375</b>	<b>86.9%</b>	<b>84.4%</b>	<b>68.7%</b>
16-17	7,010	4,920	3,343	333	70.2%	47.7%	4.8%
12-15	15,131	8,616	1,369	6	56.9%	9.0%	

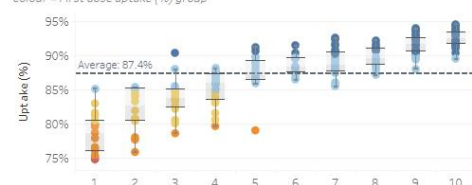
2.2 The table above demonstrates the inequity of uptake by age group. Additional inequity of uptake is seen by ethnicity and deprivation, shown in the map and charts below. It should be noted that whilst some areas fall below the Stockport average, all LSOA areas have an uptake of 74% or above.

## Vaccine uptake and deprivation

Geographic variation in uptake and the relationship with deprivation

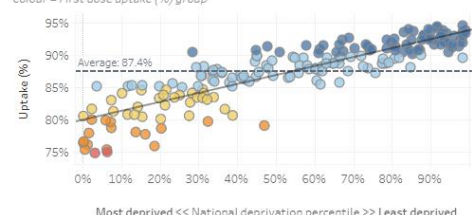
Boxplot of the LSOA variation in first dose uptake by deprivation decile

Colour = First dose uptake (%) group

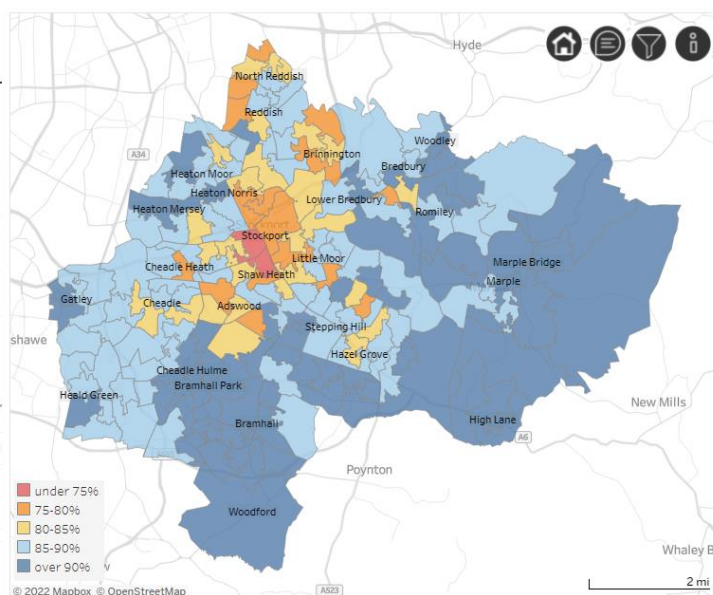


Scatterplot of LSOA national deprivation percentile by first dose uptake (%)

Colour = First dose uptake (%) group



Contains National Statistics data © Crown copyright and database right 2021. Contains Ordnance Survey data © Crown copyright 2021. | Author: graham.smith16@nhs.net



### 3. Latest announcements

3.1. The government has announced that the measures put in place under plan B in England will be lifted. You should continue to follow safer behaviours to protect yourself and others:

- Get vaccinated and get your booster dose
- Wear a face covering in most indoor public places and on public transport
- Let fresh air in if you meet indoors. Meeting outdoors is safer
- Get tested and self-isolate if required

3.2 From 19<sup>th</sup> January you are no longer asked to work from home if you can. You are advised to talk to your employer to agree arrangements to return to your workplace.

3.3 From 20<sup>th</sup> January staff and pupils in secondary schools and colleges will not be required to wear a face covering in classrooms.

3.4 From 27 January you will not be required to wear a face covering, including in communal areas of schools, but the government suggests you continue to wear one in crowded and indoor spaces where you may come into contact with people you do not normally meet. You'll no longer need to show your NHS COVID Pass at venues and events by law.

### 4. Our response

4.1 Our response remains focussed on improving vaccine uptake as much as possible, with a particular focus on equity of uptake. This work is being led by the vaccine inclusion group and works thorough our networks of community champions and VCSE partners to reach the communities with lower uptake. Additionally, in partnership with our GPs, we continue to reach out to those over 50 or clinically extremely vulnerable who are yet to have their first dose of the vaccine. A comprehensive set of frequently asked questions, including where to access your vaccine, are available on Stockport CCG website: [Stockport Clinical Commissioning Group Frequently Asked Questions \(FAQs\) about the COVID-19 Vaccination programme \(stockportccg.nhs.uk\)](https://www.stockportccg.nhs.uk/stockport-clinical-commissioning-group-frequently-asked-questions-faqs-about-the-covid-19-vaccination-programme).

4.2 Our messaging remains in line with national government and the key messages for the public remain – get your vaccine; test regularly (not a focus on before you do things, rather than twice weekly); using a face covering in indoor settings as appropriate.

4.3 The governance of our response remains through the Health Protection and Response Board reporting through to our Outbreak Management Board.