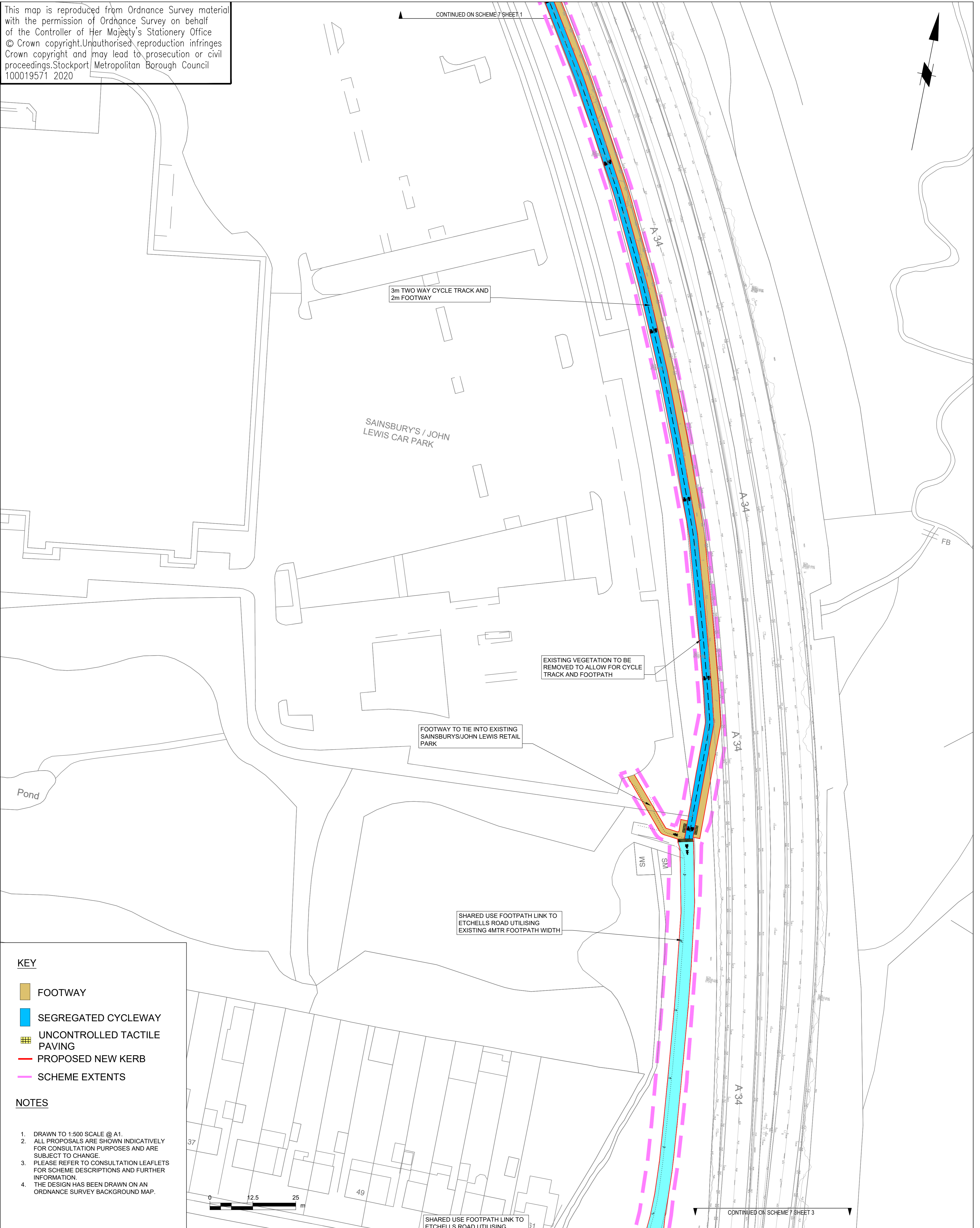
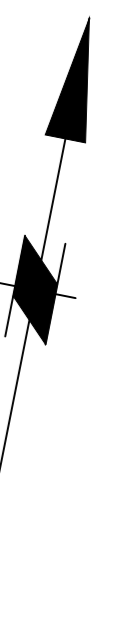


This map is reproduced from Ordnance Survey material with the permission of Ordnance Survey on behalf of the Controller of Her Majesty's Stationery Office © Crown copyright. Unauthorised reproduction infringes Crown copyright and may lead to prosecution or civil proceedings. Stockport Metropolitan Borough Council 100019571 2020

CONTINUED ON SCHEME 7 SHEET 1



**KEY**

- FOOTWAY
- SEGREGATED CYCLEWAY
- UNCONTROLLED TACTILE PAVING
- PROPOSED NEW KERB
- SCHEME EXTENTS

**NOTES**

1. DRAWN TO 1:500 SCALE @ A1.
2. ALL PROPOSALS ARE SHOWN INDICATIVELY FOR CONSULTATION PURPOSES AND ARE SUBJECT TO CHANGE.
3. PLEASE REFER TO CONSULTATION LEAFLETS FOR SCHEME DESCRIPTIONS AND FURTHER INFORMATION.
4. THE DESIGN HAS BEEN DRAWN ON AN ORDNANCE SURVEY BACKGROUND MAP.

CONTINUED ON SCHEME 7 SHEET 3



**STOCKPORT**  
METROPOLITAN BOROUGH COUNCIL

HIGHWAYS AND TRANSPORTATION  
STOPFORD HOUSE  
STOCKPORT SK1 3XE  
Tel: 0161 474

**FOR FEASIBILITY**

DRAWN HC	ENGINEER DO'G	CHECKED PH	APPROVED NW
DATE 24/11/20	DATE 25/11/20	DATE 27/11/20	DATE 13/01/21

SCALE 1:500	Revision B
DRAWING NUMBER F/0600/007/002	

CAROLINE SIMPSON  
CORPORATE DIRECTOR  
PLACE

Rev.	Drawn	Checked	Date	DESIGN REVIEW COMMENTS
B	ATC	JG	28/10/21	DESIGN REVIEW COMMENTS
A	HC	PH	25/11/20	FOR FEASIBILITY

JOB TITLE **A34 MRN CORRIDOR IMPROVEMENT PLAN**

DRAWING TITLE **SCHEME 7 - A34 FROM CHEADLE ROYAL TO BRADSHAW HALL LANE - OPT 2**