

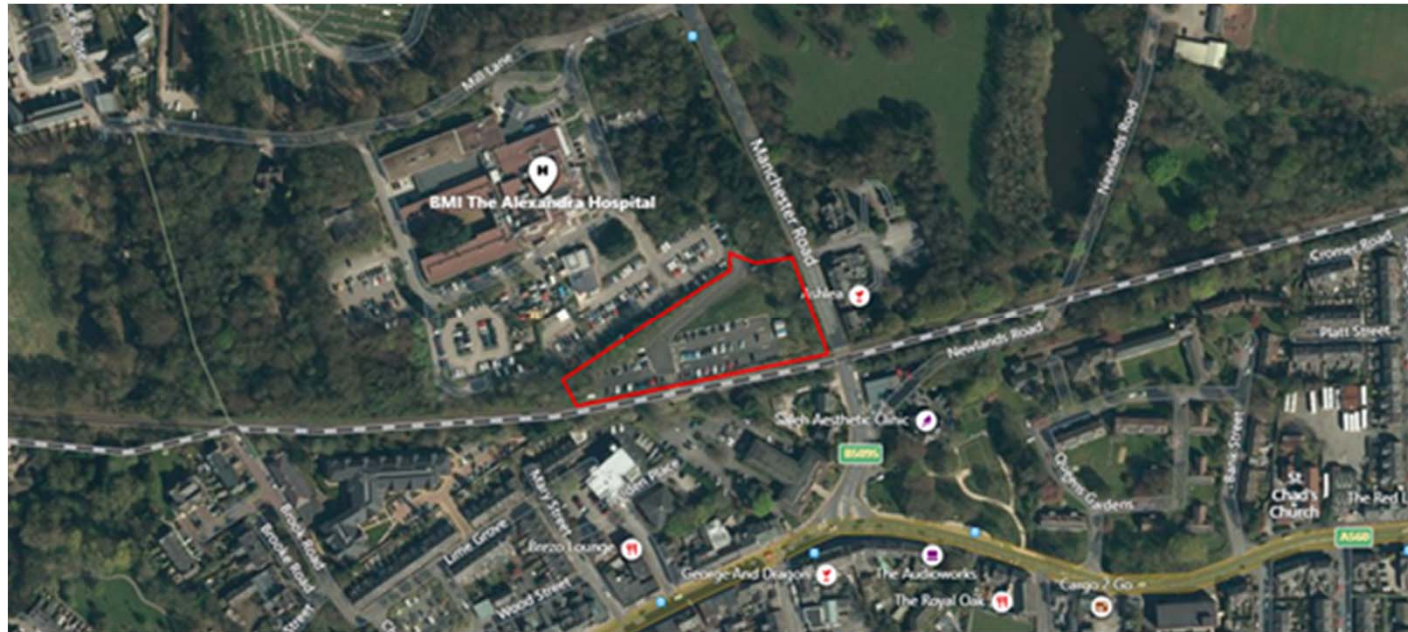


STOCKPORT
METROPOLITAN BOROUGH COUNCIL

New Cheadle Railway Station & Walking and Cycling Routes Consultation– Towns Fund



Background



The proposed location of the new station is on the Chester to Manchester (Mid Cheshire) rail line, located approximately 100m north of Cheadle High Street, off Manchester Road.



Cheadle Rail Station Project Overview

The new railway station is proposed to include the following facilities:

- A single platform and shelter which caters for trains in both directions -
- located to the north of the existing Chester to Manchester train line.
- Cycle parking.
- Associated car parking – with electric vehicle charging spaces and disabled accessible spaces.
- New vehicle, cycle and pedestrian access off Manchester Road, with new walking
- and cycling routes to and from the station.

Site Before



Site After



Cheadle Station - New Station View

Pell Frischmann



Cheadle Station - New Station Birds Eye View

Pell Frischmann



Cheadle Station - New Station View

Pell Frischmann



Cheadle Station - View Along New Platform

Pell Frischmann

Walking and Cycling Proposals Overview

To provide access to the new railway station and High Street and to connect to wider cycle routes on Manchester Rd and in Abney Hall Park, a package of walking and cycling measures has been developed. The package includes:

- A new access junction for the railway station along with new signalled crossing for pedestrians and cyclists on Manchester Road. A pedestrian and cycle route will be provided from the crossing to the new access to the station.
- A shared footway/cycleway on the eastern side of Manchester Road from Newland Road to the new crossing, underneath the railway bridge
- A new cycle route and separate footway through Queens Gardens from Stockport Road to Newland Road with associated parking restrictions and a new parking bay. The proposals do not include any changes to Cheadle Green.
- Access to Queens Gardens is changed to allow for a parallel pedestrian and cyclist signalised crossing on Stockport Road. Access to Queens Gardens will be via Bank Street with improvements to the junction with Stockport Road and additional waiting restrictions on Bank St / Queens Gardens.
- A signed on-carriageway cycle route, and pedestrian improvements, from Oak Road to Brookelds Park including some junction improvements.
- Improvements to the existing bridge and footpaths within Brookelds Park to accommodate shared footway/cycleways, including re-surfacing and the provision of lighting. Vehicle access controls will be reviewed to ensure that it is accessible for all users.
- A shared footway/cycleway on the western side of Shiers Drive.
- A new signalised crossing for pedestrians and cyclists on Cheadle Road between the Shiers Road junction and Bruntwood Lane.
- A new shared footway/cycleway to Bruntwood Lane.



Public Consultation

- 3 weeks to 7th November.
- Hosted on the Council website with full details of the project, including scheme descriptions, drawings and a survey - www.stockport.gov.uk/consultations.
- Two drop-ins:
 - Sat 23rd Oct, 10am-12noon, Cheadle Library (Ashfield Road, SK8 1BB)
 - Thurs 4th Nov, 2.30-6.30pm, Cheadle Village Hall (1 Brook Road, SK8 1PQ)
- General project enquiry phone line (0161 217 6043) and email address (Cheadletownsfund@stockport.gov.uk).

