



**STOCKPORT**  
METROPOLITAN BOROUGH COUNCIL

# Local Plan – Stakeholder and Community Engagement Update

August 2021



# Purpose

1. To update all area committees on the proposed approach to engaging with communities and stakeholders as we develop the Local Plan
2. To seek member input on any further opportunities to engage with local communities

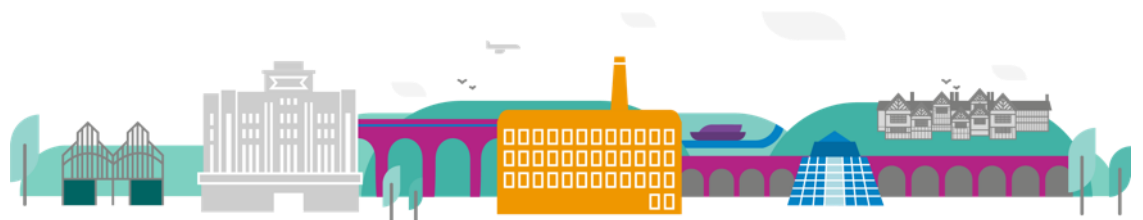
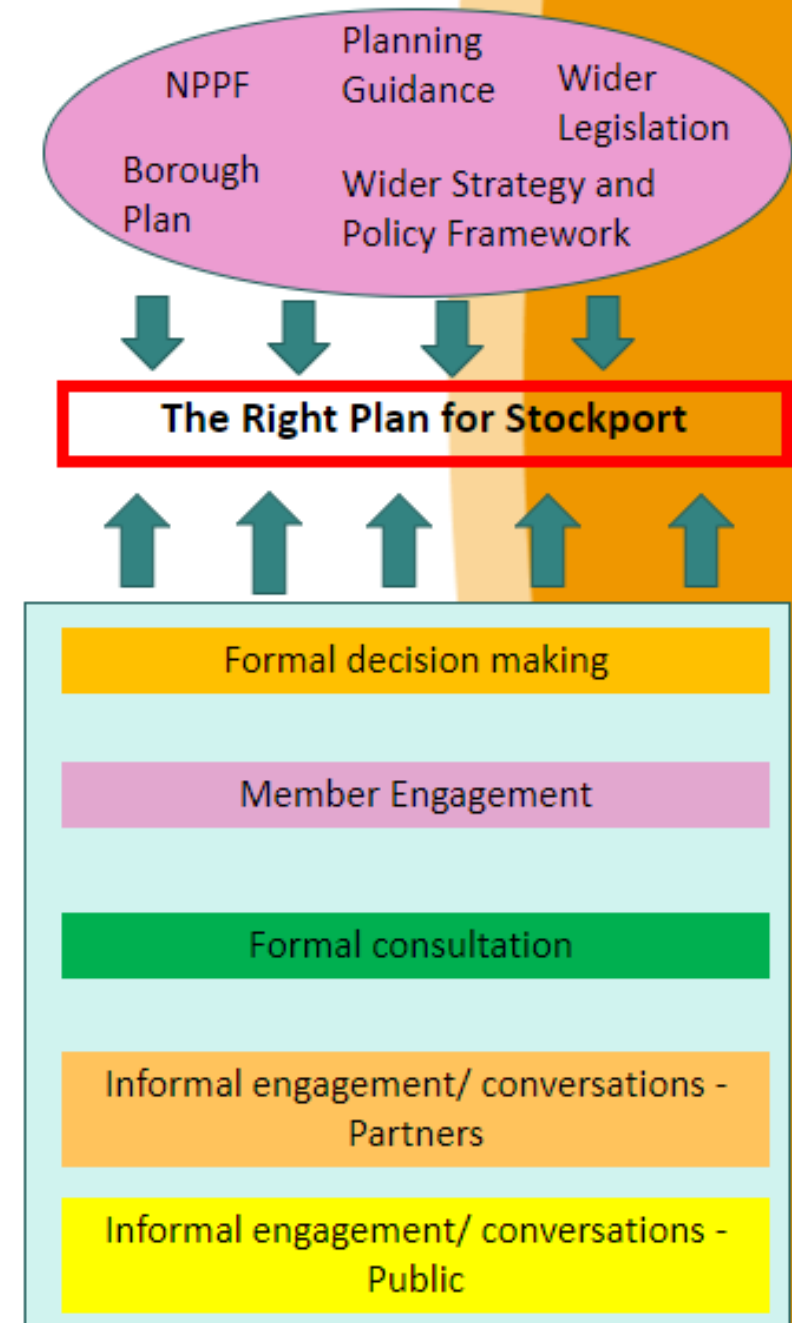


# A Bottom Up and Top-Down Approach

Opportunity to complement top-down strategic approach with bottom up, neighbourhood-led approach and build on relationships developed through Borough Plan process and covid response

## Principles:

1. Use broad range of mechanisms and forums – build on the Borough-plan approach
2. Ongoing input not just a one-off briefing/ presentation
3. Tailored engagement so content is relevant, appropriate and accessible
4. Give everyone the tools to be able to talk confidently about the Local Plan as they engage with residents and businesses
5. Give members the tools to be positive advocates for encouraging their communities to engage on the Local Plan.



# 5 Phases of Engagement

Our aims for engagement are to:

- Increase the understanding of our communities about the Local Plan, why we are doing it, and what it is trying to achieve.
- Increase opportunities for our communities to input to the Local Plan and provide their views as we draft our policies
- Increase knowledge amongst our communities about formal public consultation periods and how they can submit their views.
- Encourage a broad range of stakeholders and communities with different experiences to input into the engagement and consultation
- Ensure that all engagement activities are accessible for all



# Stakeholder and Community Engagement Update

- Overall Stakeholder and Community Engagement Plan shared with all members
- Detailed plan now mapped out for Phase 1 (July to Oct)
- Work ongoing to coordinate engagement with other key work areas (e.g. Economic Plan, CAN, Public Health) to improve efficiency and reduce "engagement fatigue" amongst our communities
- Work underway to plan proposed consultation activities for Autumn public consultation – update on this shortly



# Plan for Phase 1

## Stakeholder Groups

23 groups including Economic Alliance, College Leaders, Age Friendly Board, Housing Partnership Strategy Group and MPs.

## Thematic Groups

15 groups including Youth Engagement Group, Inter-Faith Group, Disability Access Forum and Older Person's Forum

## Neighbourhood Groups

- Work with the Team around the Place to target hard to reach areas (with potential support from Planning Aid England volunteers)
- X4 Neighbourhood Forums
- Stockport Homes Roadshow (August)

## Online Engagement

- Updated Council webpages
- Online survey
- Engaging social media and online content to raise awareness (to include talking heads and informational videos)



# Comments and Questions?

Based on the principles for our engagement and the activities already planned, are there any further opportunities to engage with local communities in this area over the summer period?

[Planning.policy@stockport.gov.uk](mailto:Planning.policy@stockport.gov.uk)

