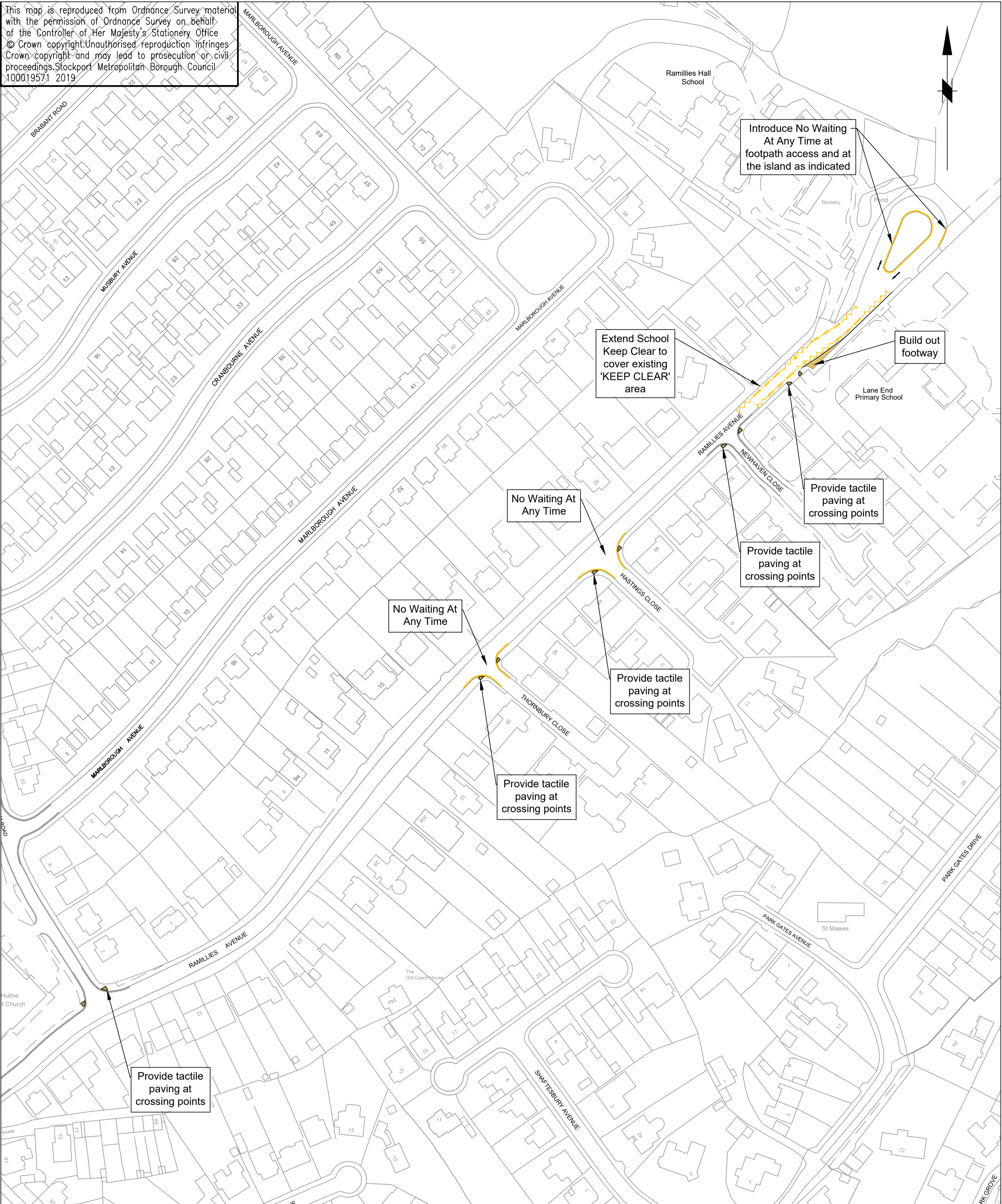


This map is reproduced from Ordnance Survey material with the permission of Ordnance Survey on behalf of the Controller of Her Majesty's Stationery Office © Crown copyright. Unauthorised reproduction infringes Crown copyright and may lead to prosecution or civil proceedings. Stockport Metropolitan Borough Council 100019571 2019



Introduce No Waiting At Any Time at footpath access and at the island as indicated

Extend School Keep Clear to cover existing 'KEEP CLEAR' area

Build out footway

Provide tactile paving at crossing points

Provide tactile paving at crossing points

No Waiting At Any Time

No Waiting At Any Time

Provide tactile paving at crossing points

Provide tactile paving at crossing points

Provide tactile paving at crossing points



STOCKPORT
METROPOLITAN BOROUGH COUNCIL

HIGHWAYS AND TRANSPORTATION
STOPFORD HOUSE
STOCKPORT SK1 3UR
TEL

CAROLINE SIMPSON
CORPORATE DIRECTOR
PLACE

JOB TITLE
Road Safety Around Schools

DRAWN AD	ENGINEER CAS	CHECKED CAS	APPROVED ES
DATE 18/03/21	DATE 18/03/21	DATE 18/03/21	DATE 18/03/21
SCALE 1:1000@A2			
DRAWING NUMBER 0305/36/001			Revision A
DRAWING TITLE Lane End Primary School			