

# The Stockport Council Plan 2021-22



**STOCKPORT**  
METROPOLITAN BOROUGH COUNCIL



# Contents

- Introduction
- Delivering for Stockport through the Covid-19 pandemic
- Our ambitions, values and how we will deliver our ambition
- Our priorities
- Our family of plans
- Delivery plans and accountability

# Introduction



This plan sets out Stockport Council's ambitions for the next 12 months, framed by the shared outcomes of our Borough Plan.

It is a plan developed as we've responded to –

and continue to respond to – the public health crisis presented by Covid-19. As a council, with our partners, communities and businesses, we've done our best to protect, support and help the people of Stockport through this continuing unprecedented and challenging time.

We are incredibly proud of how our council staff and services have pulled together with the people of Stockport to help each other deal with

the practical, economic and social impact of the pandemic.

There have been some fantastic examples of how the Council, communities and organisations have delivered humanitarian and financial aid to those needing it most - working with our partners from the Voluntary, Community and Social Enterprise (VCSE) sector and local businesses to distribute food vouchers to thousands of local families; distributing grants and financial support to local businesses and residents; and providing laptops, tablets and other devices to vulnerable children, care leavers and care homes.

Throughout all of this we've continued to deliver essential services and remained ambitious for the people of Stockport. We've progressed our exciting long-term regeneration plans through the Mayoral Development Corporation; set out our commitment to the environment through our Stockport Climate Action Now (CAN) plans; and launched a new co-produced strategy for our young people with

Special Educational Needs and Disabilities (SEND).

This plan builds on the strong relationships developed, positive lessons learned and opportunities that have been created through all of this. By continuing to work together for Stockport we can build a better future for everyone and face the significant financial and complex challenges ahead – responding to Covid-19, managing the impacts of the end of the EU transition period as well as the effects of climate change and exacerbated inequalities.

As an organisation we're committed to reshaping and working differently – with communities, digitally, in partnership and with our people - to deliver our ambitions for Stockport. Through the actions and approach outlined in this plan we'll ensure that Stockport continues to be a great place to live, work and play in the year ahead.

**Cllr Elise Wilson,  
Leader of Stockport Council**

# Delivering for Stockport through the Covid-19 pandemic

Even in the face of an unprecedented pandemic we have continued to deliver for our communities working together with partners, residents and businesses.

**We have led Stockport through this time with...**

**£62m** of support grants paid to 5,000 businesses affected by the pandemic

**£17m** of retail and hospitality grants paid to 1,000 businesses

**£1.3m** credited to 8,183 Council Tax accounts for residents in need of financial support

**£50,000** of Covid Community Support Grants paid to 57 voluntary and community groups

**£220,000** of external funding secured by Stockport voluntary and community groups



**Over 1,500,000** items of Personal Protective Equipment (PPE) distributed

**Over 7,000** vouchers sent to families to tackle holiday hunger

**8,562** calls from residents to the Coronavirus helpline

**2,761** outbound calls to vulnerable residents



**300** vulnerable and shielding households supported with a food shop

**2,261** emergency food parcels delivered by Stockport Homes

**Over 3,000** devices such as tablets, laptops and smartphones distributed to vulnerable children (via schools through Dept for Education), care leavers and care homes (amongst the first in the country to reach care homes)



**31** new mutual aid groups established and actively supporting communities

**600** individual new volunteers supporting the Stockport community

## We have also continued to deliver our services and remain ambitious for the Borough...

- Our ambitious regeneration plans continue to change the face of Stockport, with the redevelopment of Weir Mill, starting work on the transport interchange and BASF moving into Stockport Exchange.



- We have started to deliver the All Age Living Prospectus at St Thomas', helping older people to maintain their independence and look forward to a positive older age.
- We launched a new co-produced strategy for young people with Special Educational Needs and Disabilities (SEND), with One Stockport values of inclusion, collaboration and ambition at its core.
- An 'Early Help' Strategy has been developed to provide a total system of support, improving family resilience and outcomes, whilst reducing the chance of a problem getting worse.
- Public health programmes are helping to promote healthier communities and reduce health inequalities. Our work with health partners on the Victoria Intensive Project

(VIP) to support people with complex drug and alcohol issues was recognised as the best Public Health Improvement at the 2020 Municipal Journal (MJ) Awards.

- Our preventative programmes and commissioning are playing a key part during the pandemic. Stockport continues to record some of the highest flu vaccination rates in the country with more than 85% of over-65s vaccinated by the end of 2020 – something which bodes well for take-up of the Covid-19 vaccine as this is rolled out in 2021.
- Winning £14.5m of government funding from the Future High Streets Fund to support Stockport town centre to recover from the impacts of the pandemic. The bid was recognised for its forward-thinking and innovative proposals, contributing to the redevelopment of Mersey Square, bringing vacant retail units back into use as community and leisure facilities, and supporting local businesses and jobs.
- We've continued to progress our Affordable Housing Programme, with another 250 affordable homes due to be completed by March 2021, whilst bringing over 1,000 empty properties back into use.
- Promoting healthier, more active lifestyles ranging from supporting physical

development programmes within our early years settings to developing a peer mentoring scheme to help people with long term health conditions be more active, alongside wider promotion of walking and cycling.

- Launching our Stockport 'Climate Action Now' Plan setting out how we will work with our partners, communities and businesses to build a climate-friendly Stockport through reducing carbon emissions, increasing renewable energy, improving sustainable transport and protecting our natural environment.
- £4.7m of government funding has been awarded to improve energy efficiency and provide zero carbon heating in the most energy inefficient properties occupied by low income households across Greater Manchester.
- Developing a network of eight 'Teams Around the Place' spread across the Borough, linking broader community networks to these neighbourhoods and ensuring connections with wider services.
- Tackling digital exclusion to enable more people to get online during the pandemic, with remote sessions through the Digiknow scheme, a network of Digital Champions and expanding the digital lending library.

# Our ambitions and values - and how we will deliver them

## Our ambitions

This is our one-year Council Plan through which we are committed to delivering on our collectively agreed ambitions in the Borough Plan. It not only describes what we'll do but also crucially sets out how we will work as an organisation and with partners to do this.

In 2015, with our partners across the Borough, we shaped our aspirations for Stockport and committed to working together with our community to deliver **a set of core outcomes** that we believed would give our citizens the best possible opportunities to succeed<sup>1</sup>:

- 1 Stockport people are able to make positive choices and be independent and those who need support will get it
- 2 Stockport will benefit from a thriving economy
- 3 Stockport will be a place people want to live
- 4 Communities in Stockport will be safe, resilient and inclusive

---

<sup>1</sup> [Stockport's 5-year Borough Plan](#)

## Our values

Uniting our staff under a 'One Team' approach with our values as the foundation for how we work is the aim of our new People Plan.

Our values were designed with our workforce and launched in 2018 - these remain core to how we work and achieving our One Stockport ambitions through this Council Plan:

### Stockport

We are **ambassadors** for Stockport and the Council  
We **do what we say**, taking **responsibility** for our actions  
We **involve** and **listen** to people when designing our services

### team

We **work together** to achieve **shared goals**  
We are **committed** and **positive**, working to the **best of our ability**  
We feel **empowered** to give and receive **feedback**

### ambition

We encourage **new ideas** to make better use of our **resources**  
We have **courage** and **confidence** to **challenge** how we do things  
We are prepared to **take risks** and **learn from our mistakes**

### respect

We **support** each other and **celebrate success**  
We care about **diversity** and everybody's **wellbeing**  
We **work with people**, being **open** and **honest**

## How we will deliver our ambition

This plan has been developed amidst the Covid-19 pandemic and drawing on our shared experiences over the last year. The financial landscape ahead for local public services has never been more uncertain, volatile and inherent with risk, and this is likely to remain the case over the next few years.

Pic to be added

However, the joint work and collaboration prominent in our Covid response has changed the way we work forever and shaped a future direction with four unifying themes that define us:

- **We are a council that is built around our communities**
- **We are a council that maximises the opportunities of digital**
- **We are a council that values partnerships and collaboration**
- **We are a council that cares about our staff and engages them in the future**

This approach will be key to ensuring our ability to begin to deliver an ambitious and hopeful future for our Borough over the next 12 months.

<b>We are a council that is built around our communities</b>
Residents and communities are at the heart of everything we do, and our role is to empower and support kind, friendly and vibrant communities.
Working in this way we will deliver on several key strands of work set out in relation to our ambition for <i>safe, resilient and inclusive communities</i> (Priority 4).
<b>Priorities – Over the next 12 months, we will...</b>
<ul style="list-style-type: none"><li>• Work with partners to redesign how we work across public services and deliver our ONE neighbourhood model.</li><li>• Continue to engage with our communities and the VCSE sector to reshape how we work together.</li><li>• Develop and deliver our community champions model.</li><li>• Continue to improve citizens' experience of interacting with the Council through further review of customer journeys, colleague training and customer feedback</li></ul>



- Deliver the Council's Communications Strategy, focusing on the provision of good quality, planned and consistent communications aligned to the priorities set out in the Council Plan.
- Further develop and implement our approach to addressing inequality and championing equity across the Borough.
- Ensure that the Council remains financially resilient and provides value for money for all its residents.
- Support elected members to ensure robust governance and transparent decision making.

#### **We are a council that maximises the opportunities of digital**

We have the ambition to be a radically Digital Council and the key components of our digital strategy are:

- Digital Community... everyone is digitally included and new technology enables people to maintain independence.
- Digital Borough... a resilient and thriving economy responding to emerging and future opportunities and increasing digital skills.
- Digital Council... designed for people, able to respond to the future and leading the way.

#### **Priorities – Over the next 12 months, we will...**

Roll out our Digital Strategy to embed our shared digital aspiration and approaches to delivering the following priorities as a Digital Council:

- Improve customer experience with a focus on providing digital support to businesses, residents and colleagues during the Covid-19 pandemic, as well as ensuring our services are consistent, accessible and designed with people at the core.
- Embed Digital and Agile practices in service delivery to prioritise the activities that deliver most value, as well as redesigning how we work by exploiting our digital tools and supporting colleagues to work with more flexibility.
- Support intelligence-led decision making and service design through the availability of interactive service data and dashboards for all service managers, as well as continuing to automate data-related business processes and implement our Master Data Management Strategy.
- Build on reliable, secure technical foundations, ensuring the flexibility to adapt as needs change and for systems to be able to talk to each other so information can be shared and combined to achieve greater value.

#### **We are a council that values partnerships and collaboration**

We are stronger when we work together. Working in collaboration with our partners across the public, business and VCSE sectors will underpin everything we do.

**Priorities – Over the next 12 months, we will...**

- Develop delivery plans based on the vision set out in our shared One Stockport Borough Plan.
- Continue to develop the One Stockport leadership network and facilitate collaboration across sectors.
- Work with partners across health and care to design our locality model and respond to national changes regarding Integrated Care Systems.
- Continue to work with the business, voluntary and community sectors to support recovery from Covid-19.

**We are a council that cares about our staff and engages them in the future**

We are One Team - working together to improve outcomes for our residents and each other.

The five key pillars of our 'One Team' People Strategy are:

- We support each other
- We learn and develop
- We want you to join us
- We are inclusive
- We live our values

**Priorities – Over the next 12 months we will...**

- Embed flexible working practice and design the workplace of the future.
- Develop ONE Team awards and launch of 'not all heroes wear capes'.
- Launch a new Onboarding and Induction Programme.
- Create a strong, consistent employer brand and online presence.
- Review and enhance the current package of flexible benefits.
- Launch the Stockport Leader Programme.
- Develop an inclusion strategy which details our commitment to be an inclusive employer and how we will do this.
- Embed our values in everything we do, for example through new Performance and Development Reviews (PDRs), one to ones, recruitment, training, communication and engagement.

# One Stockport

In response to the Covid-19 pandemic we have seen public services, businesses and communities come together as One to support each other and protect the most vulnerable. One Stockport emerged from this response and a shared hope across communities, businesses and public services that, despite the challenges the pandemic has brought, we want to continue the spirit of collaboration to shape a hopeful and ambitious future.

We are working collaboratively with partners and our communities to develop a shared long-term vision and priorities for Stockport through a new Borough Plan. Stockport has so much to be proud of, but we know there are also significant challenges in the months and years ahead that it will be more important than ever to work together as One Stockport.

Pic to be added

In developing our collective plan, we wanted to reflect the voices and priorities of local communities, alongside understanding and

responding to insight gathered through impact studies, our Joint Strategic Needs Assessment (JSNA) and wider data analysis to shape how we stay together as One Stockport to provide the conditions and opportunities for happy, healthy, thriving and connected communities.

Throughout 2020 we spent time speaking to as many people as possible about their experiences, insight and aspirations for Stockport in 2030. We adapted our approach as Covid-19 reached our communities, working closely with local groups, businesses, community leaders and elected members, and public sector partners.

In total we heard from over 3,000 people, who either live or work in Stockport including 1,000 children and young people. We undertook online surveys, a virtual video booth and, most importantly, attended forums and facilitated discussion and debate.

The insight into experiences and aspirations that we've captured from these conversations together with what we know from wider analysis of our data about Stockport has helped us to get a better understanding of the opportunities and challenges ahead. This is shaping our One Stockport Borough Plan, which continues to be developed across partners during 2021, informing a shared long-term vision for the future of the Borough. Once agreed, this vision will be fully reflected in our future delivery plans.

# Our priorities

## 1. Our ambition is for... Stockport people to be able to make positive choices and be independent and for those who need support to get it.



Education, health and wellbeing has never been more important. We know that Covid-19 has had a significant impact on local people and

communities and the impact will be felt for

many years. Missed time at school, delayed access to services and lack of social contact has affected every one of us and increased existing inequalities.

However, we have seen compassion and kindness across Stockport as people have reached out to help friends, colleagues, neighbours and their community. More than ever before, we have worked together across

public services and beyond to support all of our residents especially the most vulnerable. We have not lost our high ambitions for our children and young people, adults and communities.

We have an opportunity to recover stronger, continuing to work together and putting people at the heart of our work.

## Our key priorities for 2021/22 to achieve this ambition will be...

### 1. Responding and recovering from the Covid 19 pandemic

- We will work with schools and wider partners to mitigate the impact of the pandemic on children and young people, including recovery planning and making up for missed time at school.
- We will work with our partners across health and care on key priorities including vaccination roll out, targeted testing at scale, contact tracing and outbreak management.
- We will support both in-house and external care providers in Stockport to respond to the challenges brought about by the pandemic and to help them to transition to the 'new normal' for service delivery.
- We will continue to provide a PPE hub for as long as it is required to keep our staff and communities safe.
- We will develop recovery plans so that we build back better, fairer and stronger.

**2. Supporting parents and carers to give children and young people the best start in life.**

- We will support children to start well and increase school readiness through delivery of our joint strategy.
- We will further integrate and align services across Stockport Family and Education, enhancing the Team Around the School Programme and extending to early years.
- We will develop and launch a plan for education, engagement and attainment, working with schools to outline priorities for an inclusive future with improved school facilities.
- We will help young people to prepare for adulthood – using One Stockport as a platform to work with schools, colleges and local businesses to inspire a future generation, launching a Youth Guarantee for those aged 16-30.
- We will equip children in care and care leavers with the skills needed to live a fulfilling, successful and rewarding life through delivery of the Corporate Parenting Strategy.

**3. Supporting children and young people with special educational needs and disabilities (SEND) to be happy, achieve their goals and feel part of their local community.**

- We will continue to deliver our SEND Strategy and address Ofsted's written statement of action.
- We will work with partners to develop jointly commissioned services and deliver the SEND joint commissioning plan.
- We will work with schools and other settings to improve inclusion so that children and young people can attend provision locally, in their own community.
- We will develop coordinated and timely emotional health & wellbeing support pathways including a single point of access to an early help offer in the community.

**4. Developing the way we deliver Adult Social Care to help the people of Stockport to live their best lives possible.**

- We will continue to embed and develop our operating model, working with partners, through prevention, reablement and a 'Home First' ethos.
- We will continue to develop the 'Enhanced Front Door' approach to accessing high quality support.
- We will develop the mental health service offer.
- We will review our seven day offer to ensure that it is fit for the future.
- We will continue to work on our Quality Improvement Programme for provider services.
- We will embed a strength and asset-based approach across all practice to provide high-quality person-centred services.
- We will use technology to support the delivery of care and enable independence, through digital referral routes and a workforce equipped to provide digitally enabled care.

**5. Improving health outcomes and reducing inequalities**

- We will have a radical focus on early help and prevention through co-designing a new model and recommissioning key services for 2022
- We will work with partners to undertake targeted action on inequalities through a new Population Health Plan.
- We will improve mental health and wellbeing through development of a joint Mental Health and Wellbeing Plan working with communities and businesses.
- We will undertake a Joint Strategic Needs Assessment (JSNA) in 2021 – with a focus on the impact of Covid-19 on health and health inequalities in Stockport.

**6. Joining up the way we work across health and care partners**

- We will work with partners across health and care to develop a Locality Plan and model that responds to national changes in Integrated Care Systems, ready for implementation in March 2022.
- We will continue to develop and embed the 'Discharge to Assess' model, ensuring that people coming out of hospital get the care and support they need in their own home or community setting.

## Measuring our impact

- Children are school-ready and young people prepared for adulthood.
- Raised attainment levels for all Stockport children and young people, including those in receipt of free school meals and with special educational needs and disabilities (SEND).
- More early years, primary and secondary school settings with the highest ratings from OfSTED.
- Number of children and young people in care, and number with a Child Protection Plan.
- Healthy lifestyles – more active people, fewer people smoking and drinking heavily.
- Reducing premature mortality rates and increasing healthy life expectancy, particularly in our more deprived areas.
- Improving access to psychological therapies for people experiencing mental health problems.
- More older people supported to live in their own home, without needing to go into hospital, residential or nursing care, or remaining at home following hospital discharge.
- High quality and timely care and support.

## 2. Our ambition is for... Stockport to benefit from a thriving economy.

Our £1bn town centre revival has already breathed new life into our historic Market Place and Produce Hall and delivered the new 'Redrock' leisure development anchored by the enormously successful Light cinema. A new commercial quarter in Stockport Exchange is now home to a number of major employers whilst new housing is redefining town centre living for the next generation. Businesses are relocating to Stockport, jobs are being created, new residents are moving in and we're making the most of the beautiful

heritage buildings and eye-catching new architecture that give Stockport its unique character. We know that Covid-19 has had a



long and lasting effect on the local economy, changing the way we shop, socialise and buy services forever. Unemployment has risen and many will feel financial hardship. However, businesses have come together throughout the pandemic and supported each other and local residents have proudly supported their local high streets.

We want to build back stronger, retaining our major ambitions for the Borough and supporting the economy to recover.

### Our key priorities for 2021/22 to achieve this ambition will be...

#### 1. Responding and recovering from the Covid-19 pandemic

- We will work with the Economic Resilience Forum to help businesses recover from Covid-19.
- We will continue to use the One Stockport campaign to encourage everyone to support local businesses.

#### 2. Delivering new regeneration, jobs, homes and infrastructure

- We will progress the Mayoral Development Corporation through ambitious investment in our Borough, in particular:
  - Restoration of Weir Mill into a thriving residential and commercial space – opening up public access to the waterside.
  - Delivering a new state-of-the-art transport Interchange further improving local transport connections, along with a new two-acre green park and high quality residential development.
  - Introducing new housing development into the town centre including the development of a new town centre neighbourhood.
  - Progressing preparations to bring Metrolink to Stockport.



<ul style="list-style-type: none"> <li>• We will create new innovation and business start-up space in the town centre.</li> </ul>
<p><b>3. Shaping the future of Stockport</b></p> <ul style="list-style-type: none"> <li>• We will develop a Local Plan which delivers the houses, infrastructure and public spaces needed by our Borough.</li> <li>• We will continue our ambitions to be a radically digital borough by designing a SMART Cities Programme supported by the necessary digital infrastructure.</li> <li>• We will invest in innovation space across the Borough to nurture digital entrepreneurship, including development of an innovation area in Merseyway; options appraisal for Stockport Exchange location; and developing proposals to attract investment for further co-working space.</li> </ul>
<p><b>4. Supporting the development of ‘good growth’</b></p> <ul style="list-style-type: none"> <li>• We will develop a broader framework for inclusive growth, promoting good development and taking action against poor quality housing and buildings to protecting the local environment.</li> <li>• In line with the Greater Manchester Local Industrial Strategy, we will support the development of the ‘Green Economy’ and businesses that will contribute to achieving reductions in carbon and eventually carbon zero.</li> <li>• We will work together to look at the goods and services we buy to keep the ‘Stockport Pound’ in Stockport and explore opportunities for social value and corporate social responsibility to support an inclusive economy.</li> </ul>
<p><b>5. Encouraging a successful and skilled Stockport</b></p> <ul style="list-style-type: none"> <li>• We will use One Stockport as a platform to connect schools, colleges, businesses and public services through a new Skills and Employment Programme that inspires a future generation and promotes inclusive employment, with the launch of a Youth Guarantee for those aged 16-30.</li> <li>• We will embed ethical employment and work collectively to support businesses to achieve the Good Employment Charter standard.</li> <li>• We will grow the Steps to Work scheme, supporting employers to recruit from our priority groups of young people, including Care Leavers, Young People with SEND, and young people that are Not in Education, Employment, or Training (NEET).</li> <li>• We will continue to promote apprenticeships as well as high quality Level 3 and 4 provision to ensure that we support those who need it to enter the labour market and to progress in their careers to higher levels of earnings in secure employment.</li> </ul>

## Measuring our impact

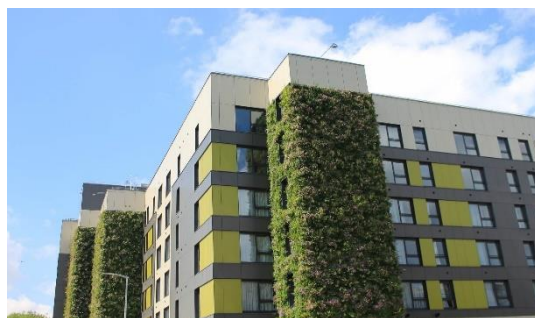
- Reducing unemployment and increasing skills across the workforce.
- More young people moving into apprenticeships, further education, employment or work-based training.
- More new jobs created and increased employment opportunities for all residents.
- Footfall and occupancy rates in our town and district centres.
- More business start-ups and re-locations.
- Increased economic productivity levels.

### 3. Our ambition is for... Stockport to be a place that people want to live.

When people think about where they live, as well as the people, they talk about their homes, their neighbourhood, their local parks, how safe they feel and whether their neighbourhood feels clean and welcoming.

Stockport is a great place to live with unique and diverse local areas, wonderful green spaces and a rich culture of sport, heritage and the arts. Our residents care deeply about Stockport, they're ambitious for our Borough,

and are worried about the impact of climate change.



The pandemic has resulted in many people rediscovering their local areas, enjoying the outdoors and walking and cycling more. We can build on this positivity as we continue to work together to make Stockport even better.

We can all play a part in meeting local climate change challenges - as an organisation and through our relationships with local public sector partners, businesses, communities and schools we will lead the way and enable action on climate change and sustainability.

#### Our key priorities for 2021/22 to achieve this ambition will be...

##### 1. Responding and recovering from the Covid 19 pandemic

- We will support the pandemic response by working with businesses and communities to encourage positive behaviour and take enforcement action where necessary.
- We will build on the behaviour change that has happened through the pandemic by continuing to focus on creating an environment that promotes physical activity such as walking and cycling.

##### 2. Taking action on climate change

- We will build a climate friendly Stockport, taking action through a 'climate community' of businesses, community and public sector organisations launched through our climate summit which will be held in summer 2021.
- We will put in place a new model of financial appraisal that will ensure climate impact is embedded into decision-making.
- We will create more low carbon and energy efficient homes and buildings, incorporating renewable energy into 40% of the Council's housing stock by the end of 2021 and installing renewable energy systems in over 100 private homes by Sept 2021.

- We will reduce the carbon emissions from our council services' buildings by 10% by the end of 2021.
- We will increase renewable energy by seeking funding to work with developers and local community groups to install large scale solar infrastructure in three locations within the Borough, whilst working with partners to enable further schemes to be developed.
- We will improve sustainable transport options by developing 14 walking and cycling schemes by 2023 and continuing to improve the public transport through introduction of the Metrolink, creation of a new Cheadle train station, and improvements through bus franchising.
- We will improve the air quality in Stockport by promoting walking, cycling and public transport ahead of the introduction of a GM Clean Air Zone in 2022.

### **3. Developing the homes we need**

- We will continue to explore how existing and future housing in the Borough can improve the life quality of our residents both now and in the future – with a focus on all age living and improving life chances for young people.
- We will promote an 'age-friendly' Stockport, including development of an innovative all-age living model of intergenerational housing along with a new intermediate and dementia care facility, supporting all our residents to live well into older age.
- We will work with Stockport Homes to shape and implement their delivery plan to support tenants and residents across the Borough.

### **4. Creating pride in our borough ensuring it is safe, clean and well maintained.**

- We will continue to maintain good standards of cleanliness, efficiency on bin collections and general maintenance of our green spaces and public realm through a neighbourhood-led approach.
- We will focus on keeping our highways safe and well maintained and take a strategic approach to parking services, public footpaths and other local infrastructure issues.
- We will protect and enhance our natural environment, working with communities to plant 11,500 standard trees, create new woodland and ensure we have an orchard in every ward and meadows across the Borough by 2030.

### **5. Living an active and healthy life**

- We will implement the Stockport Active Communities Strategy which will create the conditions for residents and communities to be as physically active as possible.
- We will implement new delivery arrangements for leisure and support community groups that deliver physical activity.

#### **6. Embracing our heritage and culture**

- We will co-create and launch a new Cultural Strategy for the Borough, celebrating Stockport's vibrant past, present and future.
- We will continue to support cultural networks, organisations and individuals working in the VCSE sector.
- We will progress our Forward Plan for Museums, adapting it as appropriate in response to Covid-19.

### **Measuring our Impact**

- More new and affordable homes for those in housing need.
- Fewer homeless people.
- A green, clean and well-maintained environment.
- More of our waste being recycled and less residual waste.
- More active communities, with greater levels of physical activity.
- Development of the all-age living campus.
- Reduced carbon emissions across council buildings.
- Planting new trees, woodland, grassland and community orchards across the Borough.

#### 4. Our ambition is for... Stockport communities to be safe, resilient and inclusive.

We feel happier and stronger when we feel we are safe and that we belong. Covid-19 has illustrated the strength of our communities coming together to support our most vulnerable. The response from local people has been inspirational.

Stockport is home to many local communities who are unique and diverse, communities which form from common interests, where people live and work, or from their faith beliefs. We know that different people

experience different outcomes across the Borough, and the pandemic has exacerbated this inequality, particularly impacting on some of our most marginalised communities.

We want to draw on this strength, passion and uniqueness in our communities to boldly address inequality, promote fairness and inclusion, continuing to create the conditions for our vibrant and innovative communities to flourish.

Pic to be added

ensure that everyone is digitally included.

Access to, and confidence with, digital technology has never been more vital. We want to maximise the opportunities of digital for all of our communities and

#### Our key priorities for 2021/22 to achieve this ambition will be...

##### 1. Responding and recovering from the Covid-19 pandemic

- We will work with the voluntary and community sector to respond and recover from Covid-19 including delivery of our Humanitarian Aid Programme.

## **2. Building connected and inclusive communities**

- We will empower local people and communities to solve their challenges themselves by unblocking barriers to action and exploring opportunities to work differently.
- We will invest in innovative ideas developed through the Stockport Local Fund and bring in external funding opportunities.
- We will co-design a shared strategy for our Voluntary, Community, Social Enterprise and Faith Sector – supported through cross-sector networks.
- We will build upon the existing VCSE forums to co-design an inclusive Voluntary, Community, Faith and Social Enterprise (VCFSE) assembly which celebrates and enables connectivity across communities.
- We will create a legacy of volunteering through the development of a Stockport volunteering hub, building on the growth of the support and mutual aid movement in response to the pandemic.
- We will develop our library offer against the national Department for Digital, Culture, Media & Sport (DCMS) libraries taskforce framework to support wider outcomes in our communities

## **3. Enabling all residents to benefit from local economic opportunities**

- We will introduce a new Food Network – building closer relationships across food poverty provision across Stockport.
- We will review and co-design a joined up financial inclusion support offer creating a clear and holistic route for people to be financially resilient and independent.

## **4. Embracing and celebrating equality, diversity and inclusion**

- We will promote and support inclusive employment practice to increase diversity in our workforce, sharing good practice and co-design anti-racism and unconscious bias development and training.
- We will empower our workforce with the skills and knowledge required to understand and address issues of equality and diversity.
- We will ensure timely and robust Equality Impact Assessments (EqIAs) are an essential and useful part of the planning and governance process and at the heart of our Covid-19 recovery plans.

#### **5. Working together across services to empower vibrant and safe neighbourhoods**

- We will develop our ONE Neighbourhood Partnership model to coordinate support for people and local places, empowering people to keep them independent and connected in their community.
- We will work with partners to refresh our Safer Stockport Partnership Strategy to promote safer communities and address crime and anti-social behaviour.
- We will implement the Youth Justice Plan and the Serious Youth Violence Strategy, working with young people to tackle youth offending and gang-related violence.

#### **6. Maximising digital opportunities and increasing inclusion**

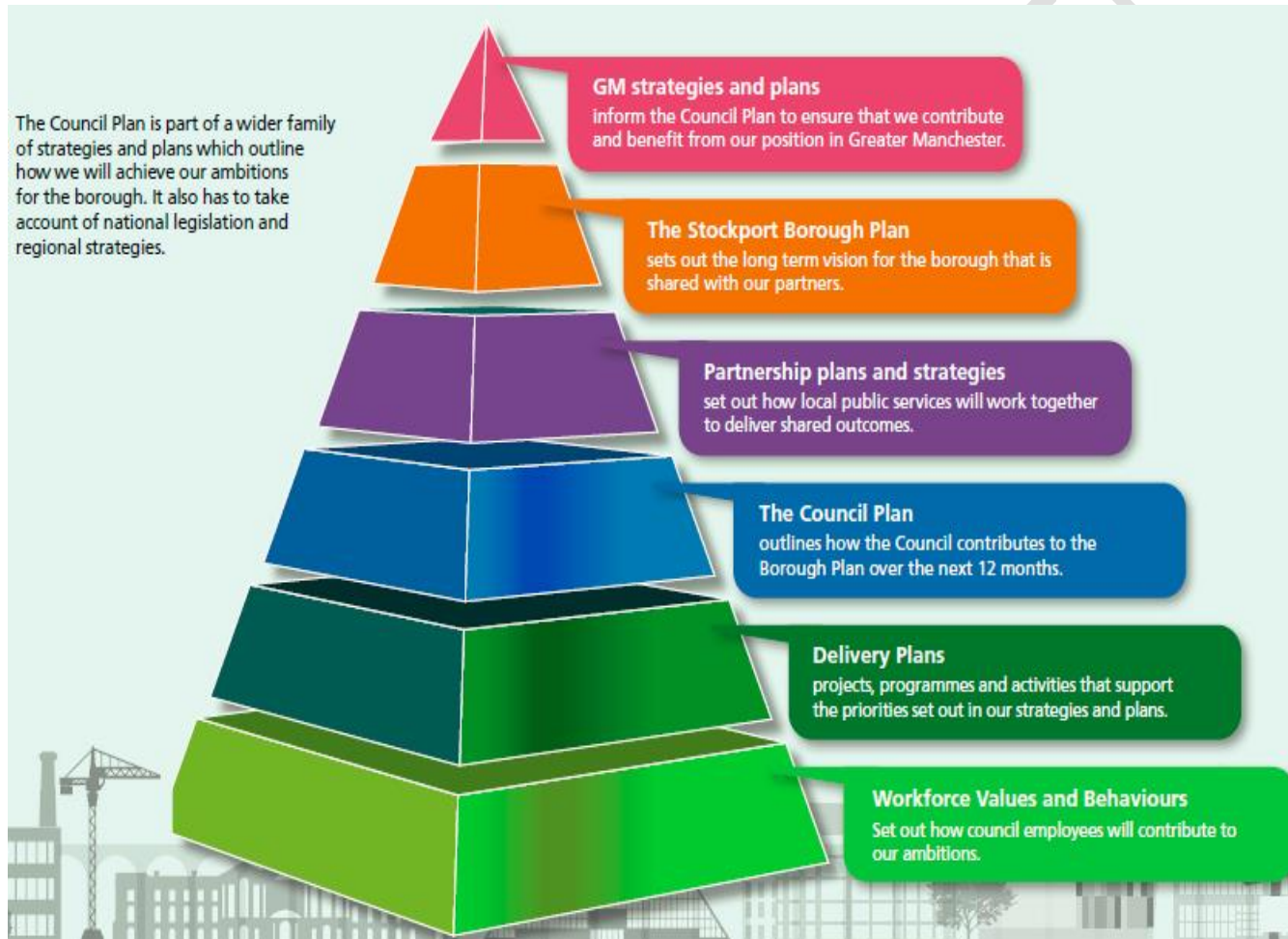
- We will develop a shared Digital Strategy to capture our shared digital aspiration, priorities and approaches to delivering these, including identifying shared opportunities to join up digital services and maximise investment opportunities.
- We will design a new joined-up preventative support offer which supports independence through information, advice and guidance along with digitally enabled social connectivity.
- We will further invest in tele-care and health, along with technology-assisted living to enable people to live independently. This will include investing in assistive technology in new intergenerational housing (All Age Living Campus) and investing in digital platforms for care homes.
- We will continue to build a sustainable Digital Inclusion movement, growing our lending library and internet of things, with an ambition to have a 100% digitally included borough.

### **Measuring our Impact**

- Reduced crime and anti-social behaviour.
- Fewer young people offending and re-offending.
- More confident, diverse and cohesive communities.
- Increased and sustained levels of volunteering.
- Improved outcomes for our residents in our priority areas.
- Digital inclusion and connected communities.
- More residents living independently assisted by technology.
- Improved perceptions of healthy and positive ageing.



# Our Family of Plans



# Delivery plans and accountability

More detail on the issues, planned activity and work in progress to deliver our priorities can be found in the following documents. We'll also be continuing to develop our strategies and plans during the year.

Stockport Borough Plan			
Council Plan			
Medium-Term Financial Plan			
Stockport people are able to make positive choices and be independent and those who need support to get it	Stockport benefits from a thriving economy	Stockport is a place people want to live	Communities in Stockport are safe and resilient
<ul style="list-style-type: none"> <li>• Children and Young People's Strategy 2020-23</li> <li>• Adult Social Care Operating Strategy and Delivery model</li> <li>• SEND Improvement Plan</li> <li>• One Health and Care Plan</li> <li>• Joint Health and Wellbeing Strategy</li> <li>• Locality Plan for Health and Care</li> <li>• Active Communities Strategy</li> <li>• Ageing Well Strategy</li> </ul>	<ul style="list-style-type: none"> <li>• Stockport Change Here</li> <li>• Mayoral Development Corporation Programme</li> <li>• Stockport Local Plan</li> <li>• Work and Skills Partnership</li> <li>• Digital Strategy</li> </ul>	<ul style="list-style-type: none"> <li>• Local Development Core Strategy</li> <li>• Housing Strategy</li> <li>• Stockport Homes Delivery Plan 2021-26</li> <li>• Healthy, Happy Homes – Stockport's All Age Living Prospectus</li> <li>• Empty Property Strategy</li> <li>• Cultural Strategy (to be developed in 2021)</li> <li>• Stockport Climate Action Now (CAN) Strategy</li> <li>• Active Communities Strategy</li> <li>• Walking and Cycling Strategy</li> </ul>	<ul style="list-style-type: none"> <li>• Neighbourhoods Strategy (to be developed in partnership during 2021)</li> <li>• ONE Stockport Communities Programme</li> <li>• Safer Stockport Plan</li> <li>• Digital Strategy</li> </ul>

Priorities and plans delivering on our ambitions will be developed with Cabinet Members and written into Portfolio Performance and Resource Agreements for 2021/22. These agreements include clear measures that allow councillors and residents to monitor service performance and the steps taken to reform the organisation.

Measures will be based on the ambitions and priorities set out above, incorporating those within the Greater Manchester Strategy.

Pic to be added

We will continue to report on measures and milestones on a regular basis, and using our new performance dashboards, to the Council's scrutiny committees, ensuring clear and transparent accountability to the Cabinet as set out below. Reports are published on the [council website](#).

Ambition	Portfolio	Scrutiny Committee
Stockport people are able to make positive choices and be independent and those who need support to get it.	Adult Care and Health Children, Family Services and Education	Adult Social Care and Health Children and Families
Stockport benefits from a thriving economy	Economy and Regeneration	Economy and Regeneration
Stockport is a place people want to live	Sustainable Stockport	Communities and Housing
Stockport communities are safe, resilient and inclusive	Inclusive Neighbourhoods	
A transformational and resilient council	Resources, Commissioning and Governance Citizen Focus and Engagement	Corporate, Resource Management and Governance