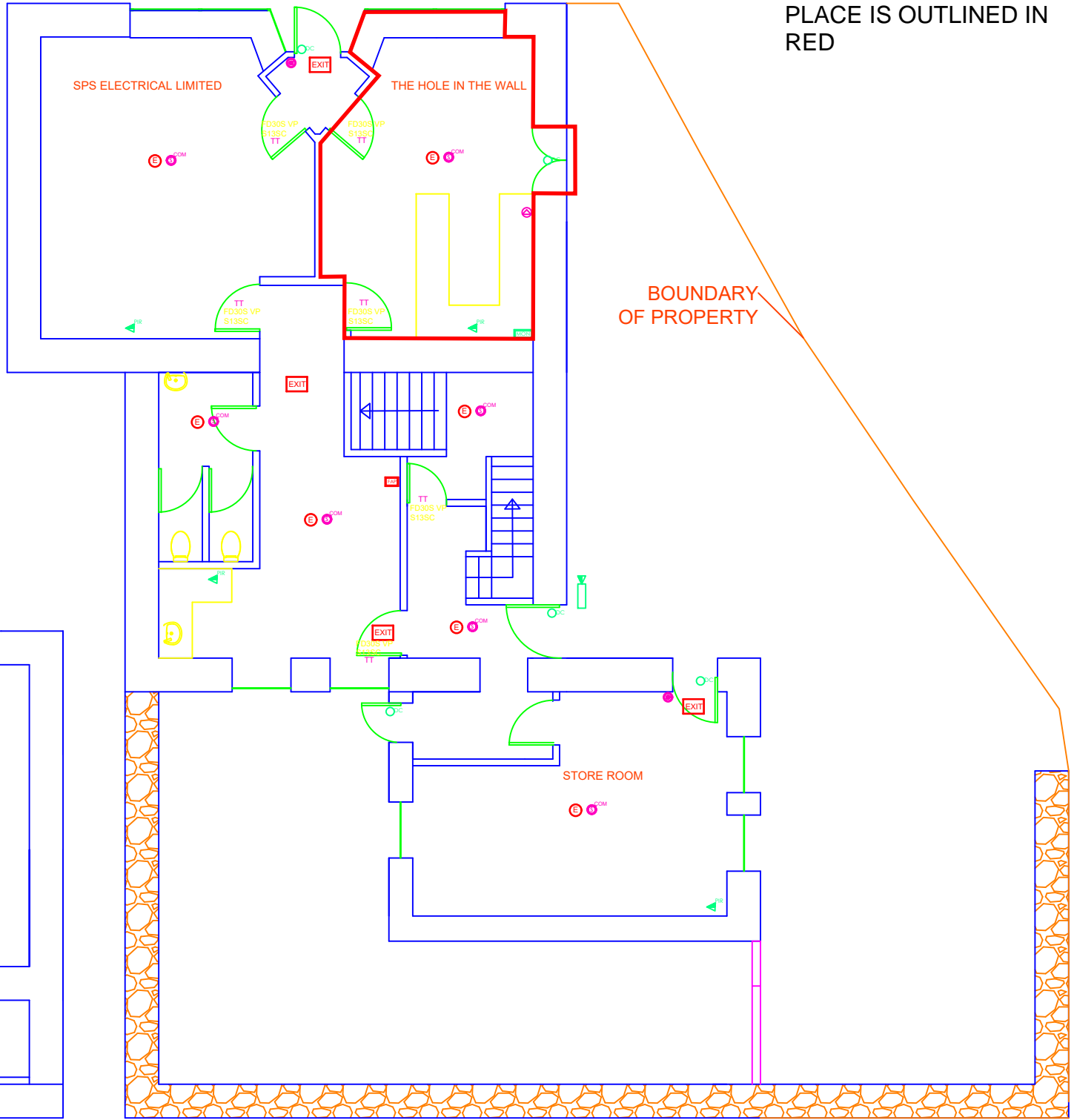


# GROUND FLOOR

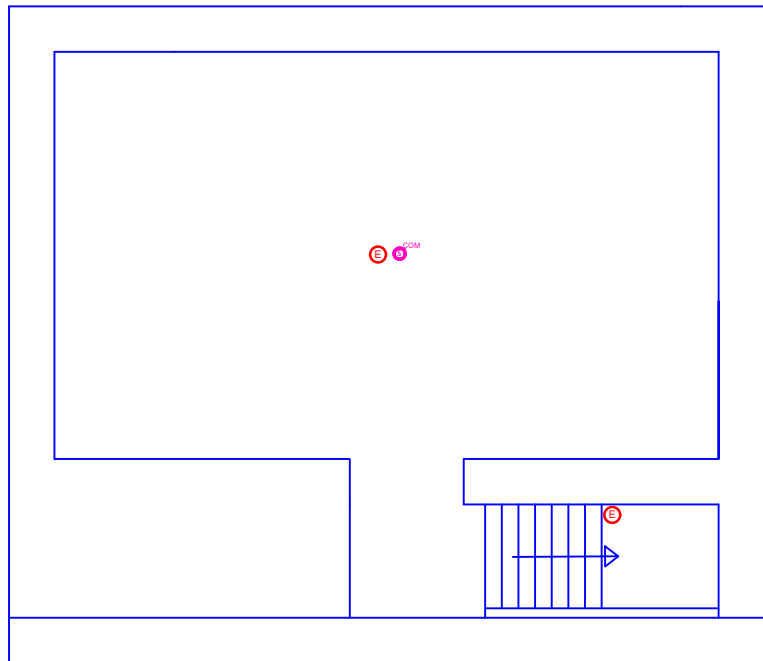
THE AREA WHERE LICENSABLE ACTIVITY IS PROPOSED TO TAKE PLACE IS OUTLINED IN RED

	SMOKE DETECTOR (CEILING MOUNT)		STATIC CCTV CAMERA
	MANUAL CALL POINT		FIRE SMOKE DETECTOR
	HEAT DETECTOR		DOOR CONTACT
	BREAKER DETECTOR		ACCESS CARD READER
	COMBINED SMOKE DETECTOR AND FIRE ALARM SIREN		CCTV MONITOR
	SIREN		RESISTOR TO EXIT SIGN/ACTIVE PUSH BUTTON
	STROKE SIREN		EMERGENCY BREAK GLASS (EXIT SIGN)
	FIRE ALARM PANEL		FISHEYE CAMERA
	FIXED FIRE ALARM PANEL		ACCESS CONTROL (HANDHELD)
	3 HR EMERGENCY DOWNLIGHT (BATTERY)		
	EXIT SIGN		
	FD30S VP S13SC 30 MINUTE EXISTING FIRE COORDINATE MARKING (EALC, VISION PANEL, GLASS AND FIBRE GLASS REINFORCED PLASTIC)		
	PB PUSH BAR		
	Fire BLANKET		
	TT SMALL THRU-TURN LOCK		



BOUNDARY OF PROPERTY

# CELLAR



**General Notes**

Items shown on this plan which do not form part of the statutory requirements are shown for indicative purposes only. This would include loose or fixed furniture the position of toilet cubicles, CCTV cameras and fire safety equipment not specified in the regulations. These are shown for illustrative purposes only and may be moved at the discretion of the license holder

LICENSING		6/20
No.	Revision/Issue	Date

SPS ELECTRICAL LIMITED

THE HOLE IN THE WALL  
32 UPPER HIBBERT LANE  
MARPLE  
SK6 7HX

Project	THE HITW	Sheet	
Date	15/06/2020		
Scale	1:100@A3		