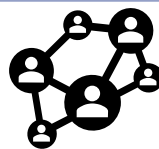




Central Stockport Infrastructure Delivery Plan Prospectus



September 2020

Foreword

Councillor Elise Wilson
Leader of the Council and Labour Group Leader

Stockport town centre is changing. Already one of the country's best-connected business locations, the town is growing and looking to the future. Over recent years we have created an iconic new commercial district and a new leisure complex, we've improved access into and around the town, and we've revived the town's historic heart. But our ambition goes much further.

In Stockport we know that the way in which people live and work - and where they choose to do so - is changing rapidly. The renaissance of city centres over recent decades has shown what can be done and we're helping to spearhead a town centre regeneration with a new approach to town centre living at its heart.

We've led the way with a hugely ambitious town centre regeneration programme over the last ten years and we've recently created the Stockport Town Centre West Mayoral Development Corporation (MDC) to deliver the comprehensive regeneration of Stockport's Town Centre West - Greater Manchester's newest, coolest, and greenest urban neighbourhood with up to 3,500 new homes and 1,000,000 ft2 of new employment floorspace. We're also aiming to deliver a further 1,500 new homes across the wider town centre resulting in a much larger town centre population.

To make all this happen, we need to provide world class infrastructure for the residents and visitors. The Council has declared a Climate Emergency and is taking the lead in bringing together all the stakeholders needed to ensure that Stockport plays its part in creating a sustainable future for its residents.

This Infrastructure Plan is an essential part of the work we need to undertake now to ensure that we are providing the best possible place for people to live, work, and play and to realise our long term ambition to make Stockport town centre the best place it can be.

The time is now right to focus on identifying the key and essential infrastructure interventions as part of the next stage of the town centre's transformation which will ensure its long-term success.

This is an ambitious plan for the infrastructure we need in the coming years but it is entirely in line with the overall ambition for the long term future of the town centre, its people, and Stockport as a whole that we're currently delivering.

Live. Work. Play. Connect.



Introduction



Welcome to Stockport. Now more than ever the importance of planning and investing ahead in our infrastructure, yet at the same time retaining flexibility for rapid changes in economic, social and environmental circumstances is paramount. The roles of towns and cities are set to change even more rapidly over forthcoming years and acceleration in planning and development of infrastructure planning is key to ensure future success.

The importance of the public sector in this will be to help plan, stimulate and facilitate such changes, working with infrastructure providers and the commercial world to ensure partnership delivery and effective investment.

Predicting the future is not an easy task, yet with our recently formed Mayoral Development Corporation and already accelerating programme of scheme delivery Stockport is well placed to be a leading beacon for infrastructure investment over the next 20 years.

This Infrastructure Delivery Plan (IDP) Prospectus seeks to set out our long term and coordinated approach to delivery in the town as a leading location for investment in the North of England. Greater Manchester City Region's Local Industrial Strategy sets out ambitious plans to become the UK's leading green and digital city-region. It is essential Stockport positions itself to take advantage of these proposals and creates the high quality, accessible and connected space and infrastructure to attract these types of industries and has people skilled and available to work in them. In addition, the city region has a stated aim of becoming carbon neutral by 2038. Having declared a Climate Emergency we will continue to redevelop the town centre in line with Greater Manchester's 5-year environment plan 2019, but will also be looking beyond to 2040.

This Prospectus is prepared alongside a Technical Report which contains some further background to the IDP should this be of interest.

We invite you to review this prospectus, engage with us and help us deliver this exciting infrastructure plan in an accelerated manner - starting now.

Importantly this plan will act as a catalyst for delivering sustainable growth ensuring that Stockport is well placed to take a central role in delivering the City Region's ambitious plans.

Our forward planning work has already started with the formation of Greater Manchester's first Mayoral Development Corporation and production of both a Strategic Regeneration Framework for the area to the immediate west of the town centre and an exciting Growth Hub focused on our key connectivity asset at and around Stockport Station.

There is a clear need to provide world class infrastructure to deal with the future challenges and create a sustainable and resilient place. The investment delivered to date and the road map described in this prospectus will ensure that Stockport is well placed and able to deal with the future challenges and uncertainties.

There is now a significant opportunity to build on the success of the projects completed to date and continue the transformation of the town centre into one which reflects both changing society and technology, while protecting the environment.

This plan is essential to ensure that infrastructure helps us thrive, as opposed to becoming a constraint. The opportunities and rewards are substantial. Our work over recent years means we are well placed to look forward to the next steps.

Achieving Great Things

But aiming higher still...

Stockport town centre is subject to an ambitious regeneration plan that has already had a transformational impact. The investment to date has provided the key building blocks, infrastructure and momentum to support further change and deliver a thriving and future facing town centre. It also demonstrates our ability to deliver, working alongside partners.

INVESTMENT

The centre of Stockport is undergoing a radical and ambitious £1 billion programme of investment. In the last 10 years around £200m has been invested that has been invested in improving the connectivity and the transport networks, created a new iconic business district and leisure complex (Stockport Exchange) and revived the town's historic heart.

Landmark investments which have enhanced central Stockport include:-

- **Improved connectivity:** Through the town centre Access Plan, a £73m scheme to improve roads and junctions and enhance cycling and walking routes across Stockport Town Centre;
- **Enhancing and diversifying the town centre offering:** £45m investment in the Redrock Leisure Complex offering a 10 screen state of the art cinema and bars, restaurants and gym; and
- **Green infrastructure:** Planning permission has been granted for the £120m redevelopment of the bus station which will result in the delivery of a state of the art transport hub, public realm and signature residential development in the centre of Stockport.

So what does a future ready town look like?

Town centres and urban areas are undergoing and experiencing a significant period of change as a result of a number of key wider societal, demographic and economic challenges and trends and Stockport is no different. These trends and influences are wide ranging and have many causes. They reflect the operation of a modern society, how we choose to travel, how our access to daily activities is changing and the major environmental challenges that we are facing.

The resilience of town centres and the need to be future ready to deal with a range of challenges is a critical priority. The changing retail sector, the increasing importance of digital in our daily lives and societal changes will all continue to have an impact. The 2020 Pandemic has simply accelerated such need even more. At the centre of our approach is the need to address these challenges:

- **Places** – the need to create vibrant and sustainable places;
- **Economy** – the need to increase productivity in a smart manner; and
- **People** – the need to improve the health and quality of life of all our residents and visitors.



FUTURE READY

A successful Future Ready town is one that is able to capture and capitalise on the technological, social, environmental and economic benefits and trends. It will provide a resilient and sustainable environment for residents and businesses to thrive. At its heart will be enhanced digital connectivity and communications; less polluting but reliable, low carbon energy sources; cleaner, more efficient ways to travel; resilience to drought and flood; and the ability to recycle more and waste less.

NET ZERO

Stockport Council share the Greater Manchester region-wide ambition to be carbon-neutral by 2038, and this target is likely to drive a considerable amount of investment decision-making over the next couple of decades. In practical terms, this means measures such as all new homes and commercial/industrial buildings being required to have a net zero carbon impact. The generation of on-site renewable and low carbon energy will have a significant role to play in this. Transport will also have a key role in delivering net zero, with Stockport working locally and alongside TfGM (through the GM 2040 Transport Strategy) to improve sustainable transport provisions.

SMART TOWNS

Places that apply Smart Town principles are built around integrated, self-organising digital networks, using technologies such as the Internet of Things (IoT), Open Data Systems, Cloud and Edge Computing and Integrated Sensor Systems, which all allow us to reduce costs and make the town more efficient and attractive. Attractive and sustainable living environments hold the key to attracting skilled workers and creative talent. Improved public spaces, green networks and pedestrian and cycling projects will make Stockport an unbeatable place to live and work, and a truly sustainable community of the future.



11,500
new residents. A major
market in itself

100%
more urban green
space and better use
of what we already
have

**Where is Stockport
now and where are we
aiming for?**



95%
Recycling, reuse or
composting of waste in
Central Stockport up from
59% at borough level in
2016/17

100%
Zero or low emission
vehicle use

DIGITAL

Stockport will need its digital connectivity to match its excellent physical connectivity. 5G will transform the digital landscape and wider society, supporting everyone's daily activities through fast, reliable and 'always on' connections. Communities will be seamlessly connected to services and assets, and digital advancements will help Stockport be a truly 'smart' town through the intelligent management of infrastructure. With a strong underlying infrastructure often invisible 'add-on' benefits will be possible to aid day to day life.

RESILIENT AND LOW CARBON

We understand our role in tackling the climate emergency and the vital role that the built environment plays in ensuring that communities are sustainable and resilient long into the future. The key foundations upon which this change will be delivered relate to:

- Building in low carbon through construction;
- Heating and energy - electrified, efficient and smart;
- Local energy generation, storage and use;
- Active travel being central to low carbon mobility; and
- Supported by alternative fuelled vehicles, particularly as manufacturers stop building petrol and diesel vehicles as low or no emissions become critical requirements.



AGILE WORKING

The way people live and work is changing. The jobs that we do now will evolve as technology evolves over the next 20 years. Stockport's diverse economy and skilled workforce is well placed to support the jobs of the future but will need to be able to respond flexibly to new opportunities and technologies. We have opportunities to support innovative approaches to working, providing flexible co-working spaces and business networks. The current pandemic has taught us new ways of doing things already – and over 20 years these changes will be major. Stockport's position between city and country makes it an ideal intermediate location for many to take up these flexible opportunities.

THRIVING COMMUNITIES

There are significant plans for growth across Central Stockport. With proposals for around 5,000 more homes in our town centre, including 3,500 new homes in Town Centre West and a further 1,500 homes across the wider town centre (housing up to 11,500 extra residents), our existing and future communities will increasingly be able to live, work, play and learn in the very heart of Stockport and represent a significant new market in themselves. Homes will reflect wider society with a mix of housing types, tenures and densities – Stockport already does this as a borough, but our aim is to bring this together in our centre. A low car strategy will be promoted taking advantage of world class public transport, walking and cycling infrastructure.

GREEN NETWORKS

The importance of green networks and urban spaces is increasingly recognised as an essential benefit to the well-being of people and nature. By 2040 we will have implemented a much larger network of green routes throughout the town centre, which will link to the existing parks and green spaces within the communities in and surrounding the town centre. Green routes will be brought back into the heart of the town, using core assets such as the River Mersey to their full potential. We already have the largest green wall in the North of England.

STREETS FOR ALL

There will be a focus on walking and cycling rebalancing movement to more sustainable travel and improving choice. Delivering balanced streets which prioritise space for people we will adjust our established networks as future capacity demand changes - removing unnecessary traffic from the core of our urban area to focus on people, their health and to improve air quality.

Having set out our vision of the future, we next look at how we get there in terms of:

- Connectivity
- Digital
- Place
- Smart Utilities / Infrastructure
- Regeneration & Investment



Stockport's strategic location is one of the town's key assets. Developing a future ready transport network that improves access and supports people, businesses and organisations meet their daily needs will be integral to Stockport's continued success. The network will:-

- Support the economic growth of Stockport, while providing increased options and resilience at City Region level;
- Meet the demand across Stockport and support access to employment, education, healthcare, retail, leisure and tourism;
- Provide and maintain an inclusive and reliable transport network to strengthen Stockport's economy and communities; and
- Help address environmental challenges and impact of travel.

METROLINK IS KEY

We will work with partners to deliver the extension of Metrolink from East Didsbury to our town centre. This will improve connectivity to Greater Manchester and be at the heart of new communities such as Brinksway. Metrolink infrastructure can also open up the opportunity for TramTrain connections to operate into central Stockport. These could include new east-west rapid transit routes towards Altrincham and Manchester Airport. This additional influence will further enhance Stockport's role as a place of 360 degree connectivity, and expand network resilience. As a new mode, it will also broaden opportunities and reduce pressures elsewhere on the network.

OUR STATION AS A GROWTH HUB

Our station will become a leading hub, with business, supporting retail and other space not only making it a place in itself but also linking communities. Short term the key will be replacing the Greek Street Bridge to improve the operation of the highway and support future delivery of Metrolink. We envisage over £250m of investment to create this change, including new connections across the railway, better

use of amenities and innovative solutions to address severances created by the existing rail infrastructure. This will link directly with Stockport Interchange bus hub.

STRATEGIC & LOCAL CONNECTIVITY

Enhancing Stockport's strategic and local connectivity as well as improving the resilience of the network will be integral to the growth and development of the town centre. In recent years, Stockport Council have secured local Growth Deal funding from Greater Manchester Combined Authority (GMCA) for the Town Centre Access Plan (TCAP) which has delivered a number of significant transport enhancements including major highways infrastructure (such as the new Travis Brow Link Road) and neighbourhood improvements (such as along Higher Hillgate). These will deliver a more resilient network, reducing congestion and helping to prioritise non-car traffic in the town centre. We will continue to manage the impact of strategic traffic within the urban core to help rebalance movement to more sustainable modes and improve connectivity. Connectivity for active modes is also important, and work to reduce the severance created by the M60 to the north of central Stockport will also be essential.

REBALANCING MOVEMENT TOWARDS ACTIVE TRAVEL

We will continue to rebalance movement towards more sustainable forms of travel. Removing strategic traffic from our urban core, we will improve choice and deliver balanced streets which prioritise space for people.

That process has already started on the A6 corridor, using signalling to hold back traffic, but there are many more opportunities to ensure that the 'golden' infrastructure (highways and public realm) of Stockport is for everyone.

We aim to further enhance our walking and cycling network improving the permeability of

Connectivity

the town centre. Further work is required to improve access over the A6 which currently acts as a barrier to movement between the town centre and the train station/ MDC area.

We are already making progress and through the delivery of the Town Centre Access Plan (TCAP) and Stockport Exchange, a number of key improvements have been made to the network in the town centre and train station. Funding secured via the Mayoral Challenge Fund will help to improve cycling and walking between the town centre and surrounding residential areas. New hubs containing space for approximately 50 bikes has also been delivered at the NCP car park, supplementing the 41 spaces located at the TfGM bike hub.

These will be the first small steps towards much bigger things, expanding these hubs to address electric vehicle and fleet provision for those that need to use such vehicles. The need to own a car will change, not because it is forced, but because alternatives are better.

The Council have developed business cases to secure funding from the Greater Manchester Mayor's Challenge Fund to deliver several walking and cycling infrastructure projects across the district. These will include new crossings which will improve the link between central Stockport and Offerton, and measures which will improve the connections into Edgeley which lies beyond the Town Centre West area.



Stockport Mixed Use Interchange, £100m investment to be delivered by 2023



Digital is having an increasing importance in our daily lives, changing the way we access services. Digital infrastructure is increasingly enabling people and businesses to gain access to their needs via non-physical means and a much wider range of needs can be served remotely - no longer requiring physical movement of people.

Technology is rapidly evolving, and communities and businesses will need to be seamlessly connected to services and assets.

A fundamental part of Stockport's development will be ensuring its digital connectivity matches its excellent physical connectivity. Investing in the necessary infrastructure to support these digital advancements will help Stockport to develop as a truly 'smart' town. This applies to both the underlying infrastructure to support digital services, including utilities and cabling, but also the provision of the add on benefits that are often more visible but end up being taken for granted as a 'new normal' - for example smart sustainable lighting that varies with changes in the way the environment around is set to operate or with road markings that alter according to network conditions and need. In the future critical spaces will become enabled and flexible with ability to rapidly change the way in which they operate.

DIGITAL ECONOMY

The way people live and work is changing. The jobs that we do now will evolve as technology evolves over the next 20 years.

Stockport's diverse economy and skilled workforce is well placed to support the jobs of the future and take advantage of opportunities at a city region level including Greater Manchester's leading position in a range of sectors including the digital and creative sectors.

Greater Manchester's Local Industrial Strategy sets out ambitious plans to become the UK's

leading green and digital city-region and seeks to build on Greater Manchester's position as a leading European digital city region. It looks to maximise growing assets in cyber security, enable the digitalisation of all sectors and capitalise on the links between digital and creative industries that feed internationally significant clusters in broadcasting, content creation and media.

Through responding flexibly to the new opportunities Stockport will be able to take advantage of these proposals and create the necessary high quality, accessible and connected workspace and infrastructure needed to attract these types of industries.

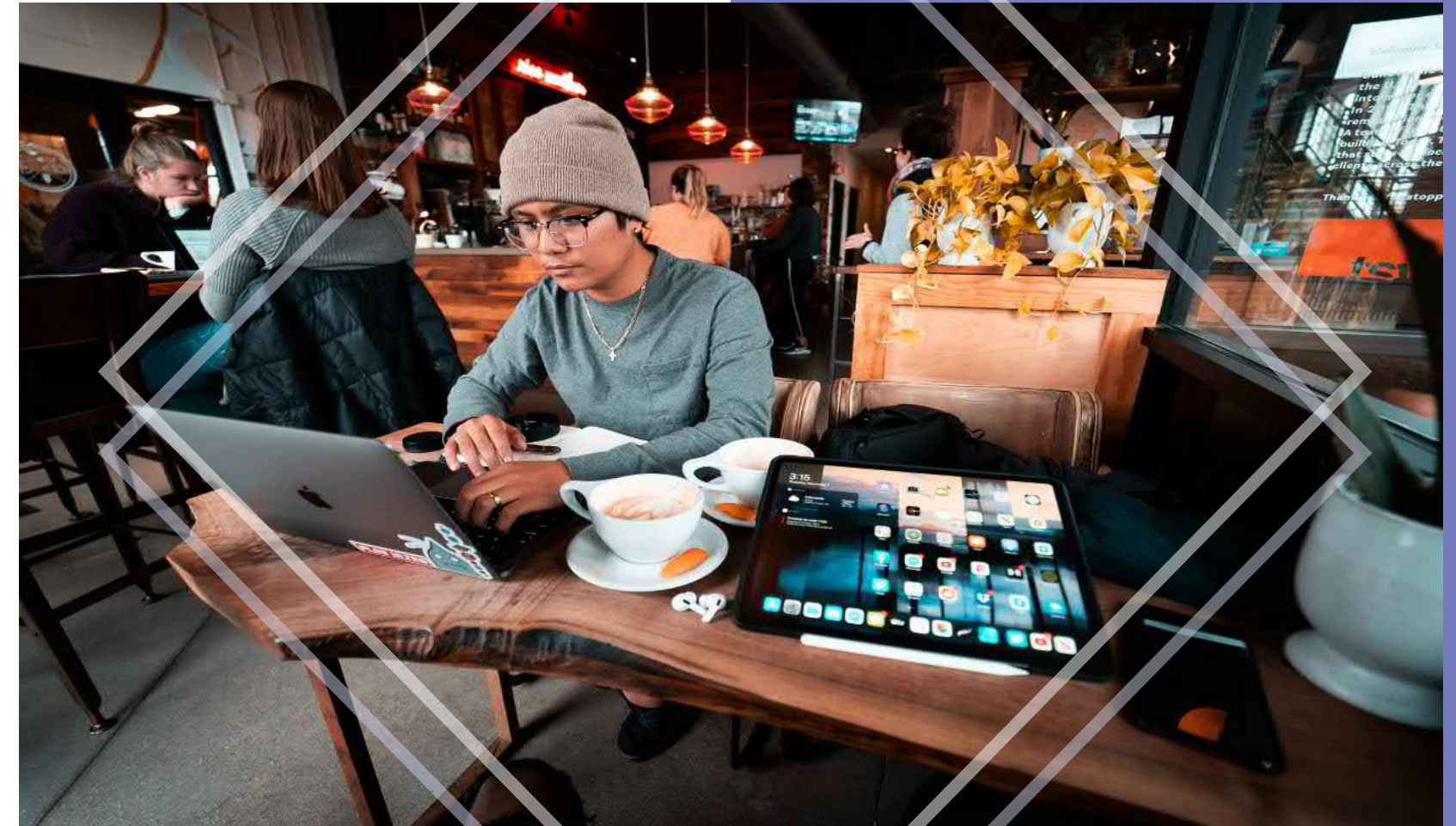
DELIVERING DIGITAL INFRASTRUCTURE

To support the delivery of these networks we will:

- Develop relationships with mobile operators to encourage information sharing and influence the development of signal coverage;
- Work with Government's Barrier Busting Task Force and other Stakeholders to create a strategy to deliver 4G and 5G infrastructure in Central Stockport;
- Lay ducting and enable connectivity in conjunction with highway works to improve efficiency of delivery. This will mean thinking ahead and planning for the future at an early stage. While precise capacity requirements are constantly evolving we can ensure that service corridors are built into plans now, rather than adapted later;
- Ensure that new development incorporates digital infrastructure into design at all levels - from public space to buildings;
- Work with consumers and suppliers to understand the additional hardware opportunities that are available and encourage commercial investment in resilient systems that add real value;

Digital

- Ensure networks have integrated resilience, through measures like laying secondary fibre; and
- Ensure that all buildings and public spaces have the infrastructure which enables complete wireless and/or wired connectivity across sites.





Stockport has a rich history and a strong identity which sets it apart from neighbouring towns. It is blessed with a characterful landscape, heritage and setting, centred around the River Mersey valley, the viaduct and the Victorian streetscape.

The future will increasingly be about digital connectivity but celebrating the uniqueness and setting of a place will still be key. In Stockport the new will respect and complement the old, enhancing identity through preserving and supporting local heritage. Placemaking and community will continue to be central - capitalising on unique assets, creating public spaces to host events and activities. By leading the way with a sustainable approach, Stockport can become a high benchmark whilst protecting our existing heritage.

STREETS FOR ALL

Through rebalancing movement towards more sustainable forms of travel we will deliver balanced streets. Walking, cycling and public space will move to the top of our hierarchy and there will be a renewed focus on people, their health and well-being. This will help create high quality urban spaces and sustainable environments where residents and visitors are able to spend time ultimately increasing footfall and dwell time.

GREEN NETWORKS

The importance of 'greening' is increasingly recognised as an essential benefit to the well-being of people and nature. This will be brought back into the heart of the town using core assets such as the River Mersey to their full potential. Existing green wall projects at The Mailbox and at Redrock have started the process. The new living green wall installed at the Mailbox residential development on the A6 is the largest in the North of England, including almost 115,000 plants. There will be an increasing focus on improving well-being, air quality and carbon capture. By 2040 we will

have implemented a much larger network of green routes. These will link to existing parks, green spaces and communities in and around the town centre. We will also make more use of what we have, re-thinking the way in which we use assets such as Hollywood Park, both as green spaces and community places. The Covid-19 Pandemic has demonstrated the value of accelerating such changes as well as the way we manage these spaces. We want the commercial world to work with us on such changes recognising these places as assets.

Green does not only have to be about formal spaces, and we will seek to create and support wider opportunities which build on the same principles, for example urban allotments and farming initiatives. We want to support commercial ventures (such as vertical farms above buildings), as well as community greening projects which can provide well-being benefits to their participants as well as produce which can benefit the whole community and help to diminish the challenges of food poverty.

A RESILIENT CARBON TOWN

In March 2019 Stockport Council declared a climate emergency and pledged support towards Greater Manchester's ambition of becoming a carbon-neutral city region by 2038. Key to meeting this target will be delivering sustainable and resilient communities. We will look to ensure that all new developments across Stockport:

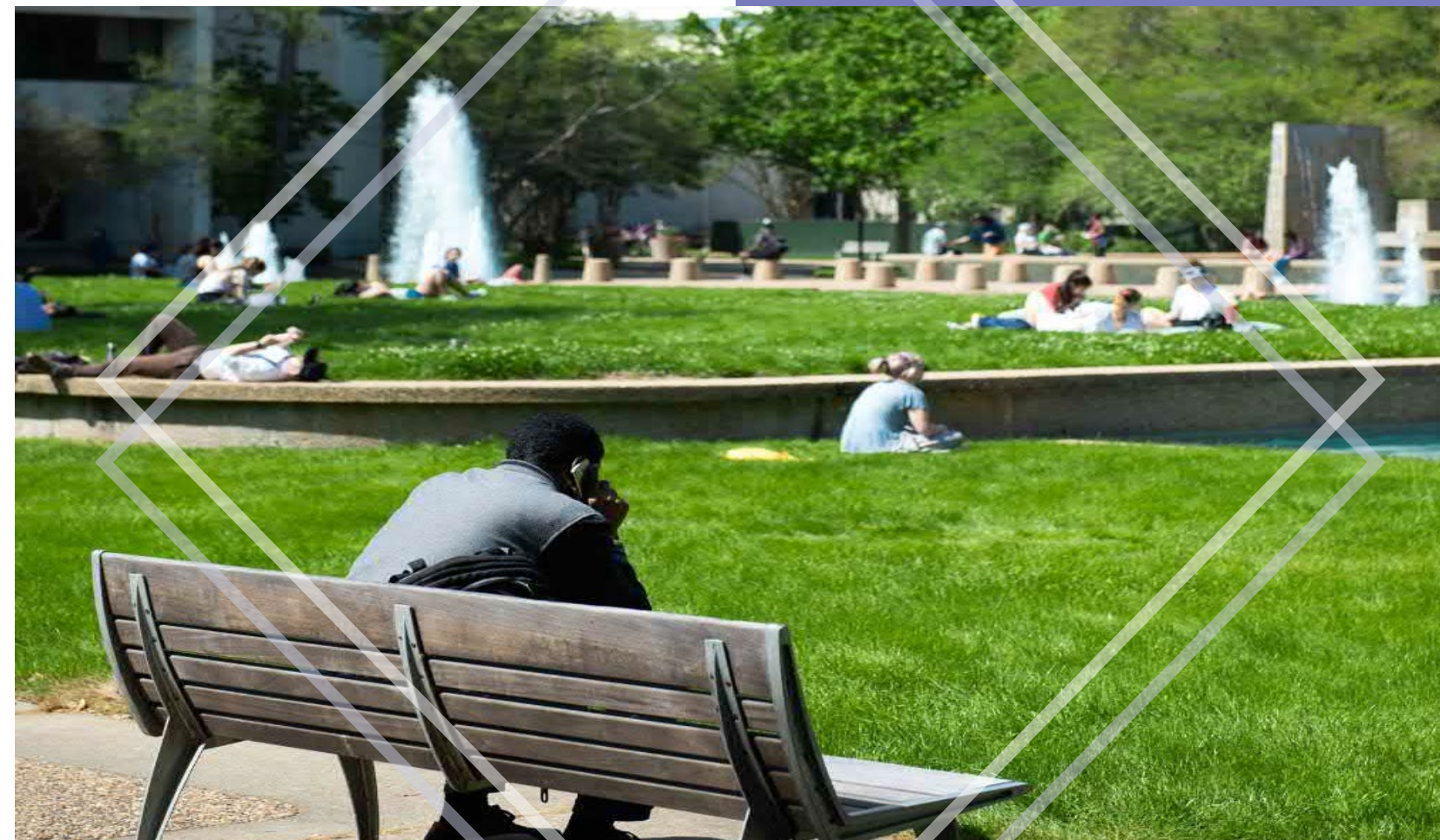
- Implement a carbon free construction approach;
- Build in local energy generation, storage and use;
- Adopt a net zero approach and are electrified, efficient and smart;
- Are accessible and connected with active travel and public transport central to planning and delivery; and
- Integrate Electric Vehicle charging points in technology into their design.

Place

ELECTRIC VEHICLES Technology is rapidly changing with a momentum to shift to electric vehicle (EV) technology. There is an increasing urgency to address the impact of greenhouse gases from transport with the trajectory towards zero tailpipe emissions established in governmental policy. Hybrid, self-charging and plug-in electric vehicles are readily available, and Government Policy is driving and supporting this shift by setting out the minimum requirements for new developments.

We recognise the need to support the shift to EV technology. As a fundamental building block for reducing carbon emissions from transport we will roll out our charging points in more locations and deliver a number of multi-storey parking 'hubs' where EV technology will be integrated. We want to be 100% electric by 2040 across all vehicles and fleets.

Government data shows that by the end of 2020 Q1, the Stockport district has had more Ultra Low Emission Vehicles licensed than any other GM district. Stockport also had more new vehicles licensed in the last three months than in any other district. This demonstrates there is a growing local market and desire to adopt these technologies, and further charging infrastructure is needed to support people making this green change.





Over the coming years, utilities will become increasingly smart. Our energy, water and waste will become increasingly connected, digitised and intelligent, capable of collecting data that helps deliver services more efficiently and reliably. Ultimately this will help our urban areas be more sustainable, more resilient and responsive to a changing climate, and healthier for its residents. Utilities will become seamlessly integrated with place, transport and well-being.

ENERGY

Beyond 2030 it is expected that the future of power, especially in towns and cities, is increasingly electric which will impact our cars, heating and our day to day life. Electricity will mainly be generated by renewables or by carbon captured fossil fuel which have a profound effect on city air quality and noise.

Technological advancements will result in a greater use of 'Big Data', intelligent systems, ubiquitous sensors and internet of things for asset management. There will be an increased use of innovative measurement and maintenance technologies and new information and communication technologies which will provide data that allows quick detection of failure all of which change the way we manage our assets.

Smart grid technologies will also have a significant impact on our homes. Local energy networks are likely to become more common and EV and customer home batteries to be used as grid storage assets – using intelligent charging.

We recognise that the generation of on-site renewable and low carbon energy will have an important role in helping to meet Greater Manchester's net zero targets. There is significant physical space across the town centre available for installation and retrofit of renewable energy technology including

solar photo-voltaic panels on buildings and air source heat pumps. Stockport Homes are already leaders in sustainable housing and have installed 2,300 solar PV panels as well as biomass heating for 2,100 homes across the whole of the borough.

WATER

Climate change will continue to have an impact on our management and use of water across our homes and communities. The rise in peak temperatures in towns and cities by the middle of the century, drier summers and increased risk of extreme weather events will all impact on the way we manage water assets and infrastructure. New information and communication technologies will provide data that allows quick detection of failure. Intelligent systems, internet of things and big data are also expected to lead to optimised asset management.

In the near future, we expect rainfall harvesting for local use to become more common. We will aim for all new developments to incorporate rainfall harvesting systems to reduce the amount of water required for uses such as flushing toilets. We also look to use Sustainable Urban Drainage systems (SUDs) as widely as possible to provide a holistic approach to the management of surface water, and to reduce the amount of rainwater entering the sewer system. The main sources of flooding to Stockport town centre are the River Tame, River Goyt, the River Mersey and Hempshaw Brook - the use of SUDs will also be key in managing the amount of rainwater entering combined sewer system. The use of these rivers as 'places' will also become increasingly important.

WASTE Over the near future the circular economy – recovering resources from waste is expected to become more mainstream with increasing numbers of products designed for re-use and recycling. Land filling will also become much more expensive and less common.

Smart Utilities / Infrastructure

Stockport is already leading the way in how we manage waste. In 2016/17, the percentage of household waste sent for reuse, recycling or composting was 59.0% in Stockport. We also signed the Plastic Free Stockport Pledge to reduce the amount of avoidable single-use plastic being used. Opportunities exist to remove bins from the street allowing for the reduction of space dedicated to refuse and recycle bins in new developments. Instead we can prioritise active uses that contribute positively to the streetscene and the wider town centre community.

Stockport is already setting a strong example through the way that waste is managed. In 2018/19, the percentage of household waste sent for reuse, recycling or composting in Stockport was 58.3%, placing it second of the ten GM district by this metric.

We also signed the Plastic Free Stockport Pledge to reduce the amount of avoidable single-use plastic being used.



LEC Lyon



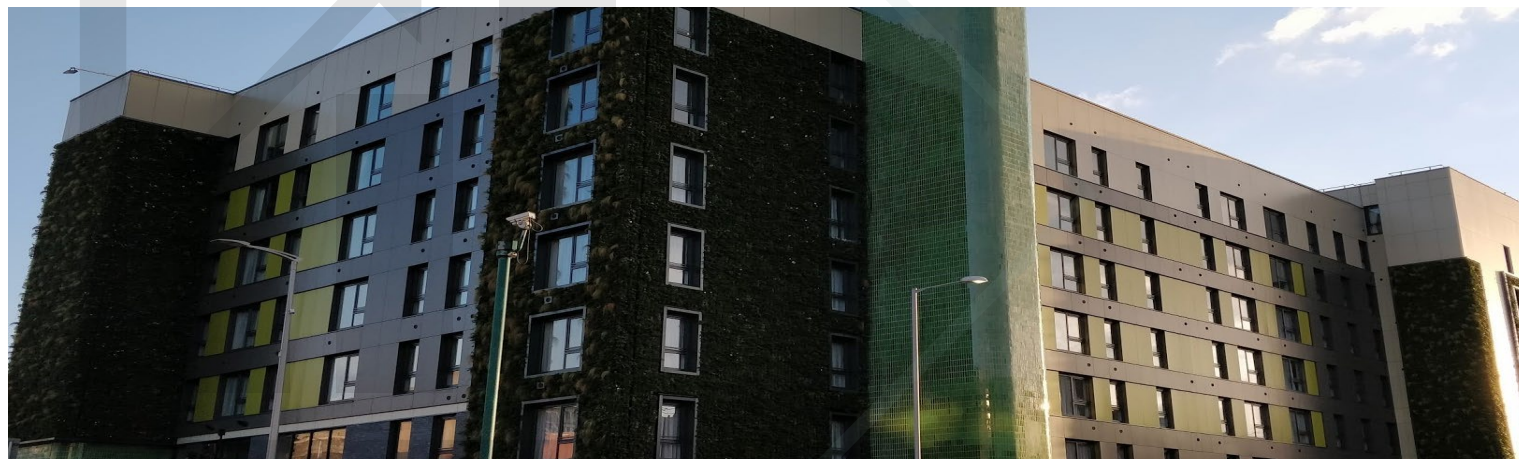


Central Stockport is already exciting investors, and there has been a phenomenal level of investment already channelled into infrastructure and development projects in recent years. Collectively, this has helped with the re-positioning of the town centre offer, and it is now better equipped to face the evolving needs of its population and businesses.

Regeneration in itself provides the opportunity to upgrade infrastructure, and build back better and greener. These opportunities are ones with it will be important to capitalise on.

A development and infrastructure pipeline is set out in Chapter 4 of the IDP Technical Report, identifying the next stage of infrastructure, residential and commercial development projects for the next 5 years. These proposals may have an impact on how existing infrastructure operates, particularly where available capacity is close to limits. It will also provide evidence to support the provision of new infrastructure intervention, where it is most necessary to support the continued delivery of new schemes.

Regeneration & Investment



Stockport Station

Cycle lane

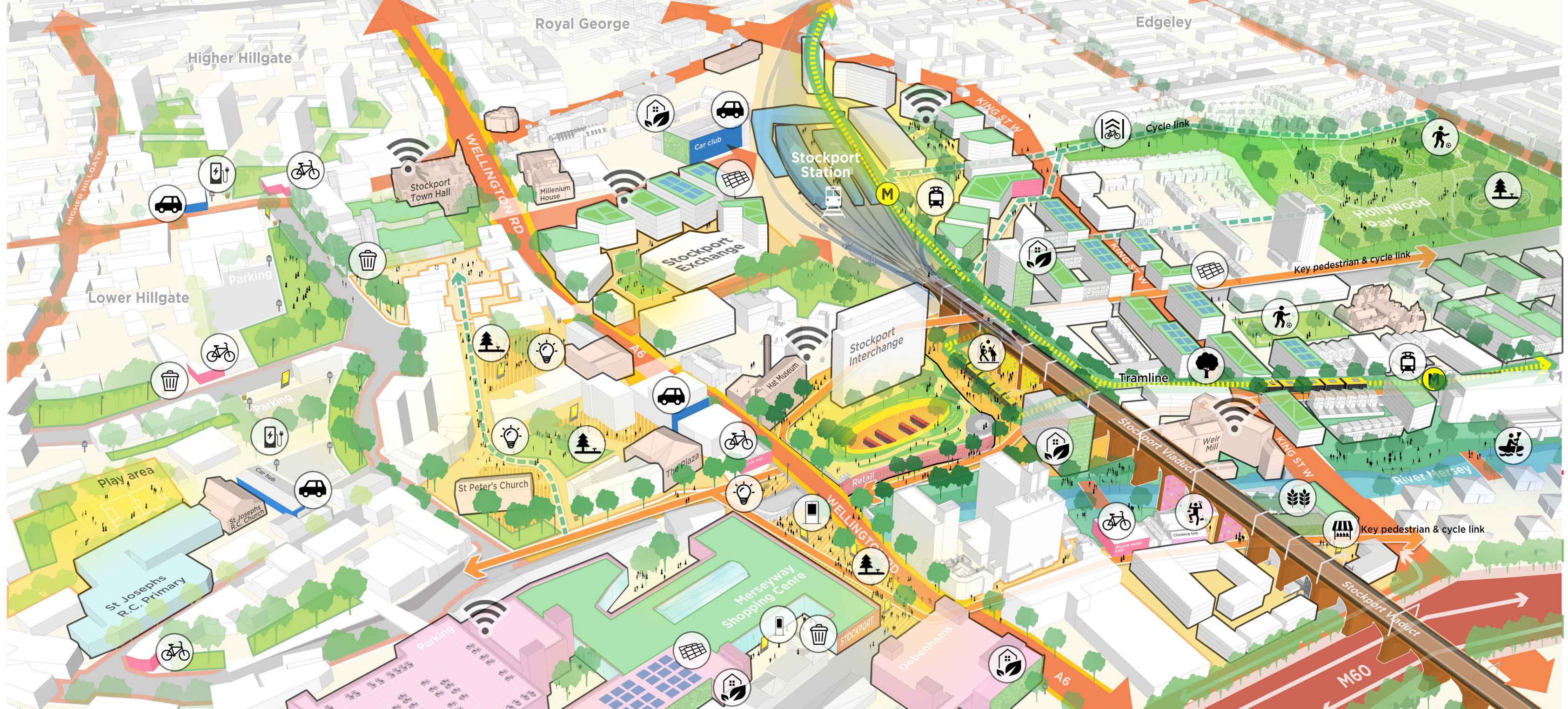
Flexible space

EV Charging

Green building

Digital totem

Cycle hub



Sports amenity

PV on green roof

Green network

Tram stop

River kayaking

Vertical farming

Viaduct play

Central Stockport Infrastructure Delivery Plan

The development of this IDP has taken us through the following stages:

- A review of international good practice in infrastructure planning within towns that share similar ambitions with Stockport. The case studies have demonstrated real world instances where meaningful outcomes have been delivered for communities. This has helped set a focus on the future that can be realistically achieved within Stockport;
- A review of the baseline, existing physical infrastructure provision across the town centre (including across Town Centre West) to understand where we currently are. This has highlighted issues and opportunities, showing where focused investment in infrastructure is required; and
- A review of the infrastructure and development pipeline which has demonstrated there is an impressive amount of new investment planned across the central Stockport area, which will sit alongside the ‘business as usual’ upkeep and renewal programmes.

Building on all of this evidence, the comprehensive infrastructure delivery plan for Stockport town centre and Town Centre West has been developed.

These projects are realistic yet ambitious, and will help us achieve our aspirations for an additional 11,500 people calling the town centre ‘home’. By being delivered in a co-ordinated manner, these projects can collectively have a transformational effect on central Stockport, positioning the town at the heart of rapidly evolving GM city region plans and achieving the Council’s future vision for ‘Smart Town’ Stockport.

Success cannot be delivered by Stockport Council alone, and realising ambitions will need support, funding and resources to be brought together from a range of stakeholders. The real power of planning our infrastructure comprehensively and in advance is in its integration, and the Council will be responsible for driving forward the plan, using internal and external experience and expertise to deliver.

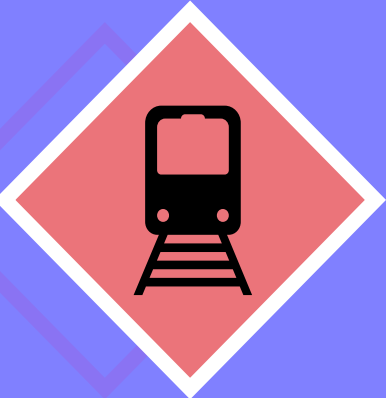
A key part of this responsibility will be identifying and securing the necessary funding. The Council will capitalise on existing and potential funding opportunities where possible but securing finance to the level required to cover the complete IDP plans is likely to be challenging. A successful strategy will rely on maximising existing partnerships to secure external funding, as well as identifying opportunities to secure internal funding. There will also be many projects where we will need the private sector to take a lead, and the substantial plans for growth in Central Stockport offer extensive opportunities for third-party funding to be used. In particular there is the chance to work with developers to create highly sustainable homes and neighbourhoods, and this will have a considerable impact on the feel and character of the town centre.

Good cases make good investment, and we will work with public and private sector partners to help create conditions for positive cases to be made. Ultimately, having this IDP in place helps us to make a strong case when bidding for funding, demonstrating our long term and advanced thinking, and the strategic importance of our proposals.

It should also be noted that this IDP has been prepared at a time when Government are proposing significant reforms to the planning system in England. Stockport Council will adapt to changes in national process, and continue to use all planning tools available to maintain and accelerate the speed of high quality regeneration and placemaking across central Stockport.

An example of this good practise is Local Development Orders (LDO), which can currently provide permitted development rights for specified types of development in defined locations. We are exploring how we can use LDOs to simplify the introduction of expanded heat networks around central Stockport.

Projects



The Infrastructure Delivery Plan sets out a list of over 58 projects, presented across 5 themes - Transport, Energy, Digital, Waste and Blue/Green/Golden.

In total, this represents around £1.3bn of investment into central Stockport. Transport is expected to require the largest amount of funding although the Metrolink and Tram Train projects identified in the plan account for a majority of the costs subsequently identified.

The bullet points below showcase examples of the exciting and ambitious projects included in this IDP, with full information available to be viewed in Chapter 5 of the supporting IDP Technical Report. They are by no means an exhaustive list and there are projects at all levels that cumulatively make a difference.

While some projects in the plan are short term, many are longer term investments or ones that develop over time. This means that the actions we are taking today need to consider ‘where we want to get to’ and be future proofed in order to maintain relevance.

TRANSPORT - 25 Projects as set out in Section 5.1 of the Technical Report, including:

- **‘Growth Hub’ Station**–Doubled commercial space with Tram & HS2 linkage delivered in first 10 years. New cross railway links for all and a new gateway place. (Project references, as in Chapter 5 of the Technical Report,T1).
- **East Didsbury to Stockport Metrolink** – offering new orbital travel and increasing resilience, running sensitively through the heart of our new neighbourhoods to create great accessibility (T2).
- **Tram Train Hub With links to Manchester Airport, Altrincham plus Mid Cheshire Rail** - Trebling urban public transport access on core routes over the next 20 years. 360 degree connectivity to towns and suburbs (T3).
- **Electric Stockport Charging Hubs and all electric development** – moving to 100% electric cars and vans by 2035 as we move away from petrol and diesel (T13).
- **An Accessible A6** - Targeted works along the A6 to make it less imposing and easier to cross by pedestrians and cyclists, in the context of a wider movement plan around the town centre network. Works are under consideration near to the Stockport College site and near Railway Road (as part of a wider MCF route) (T12,T15,T16,T17).
- **Connectivity Hubs** - A programme of hubs that incorporate parking, hire, cycle amenities and facilities that are built from now to evolve as car use and ownership changes. Investing from now to allow changes to other uses such as PV or vertical farms as mobility demand changes (T6).
- **Edgeley Active Neighbourhood** - Complementing the Station and Hollywood Park ‘green hub’ to create Greater Manchester’s foremost active neighbourhood where placemaking is activated by cycle and walking initiatives that make them mode of choice and provide seamless connection with Central Stockport (T8).

ENERGY - 11 Projects as set out in Section 5.2 of the Technical Report, including:

- **Ground Source Heat Pumps** – All suitable new dwellings to have ground or air source heat pumps and new ground-source pumps in Hollywood Park area to supply adjacent residences. The latest feasibility work and techno-economic modelling has set out a potential heat network aligned to the River Mersey which could serve both new development and existing heat loads within central Stockport. Reducing resident heat costs and environmental implications (E2).
- **Solar Photo Voltaics Town** – PV to be installed on all new buildings (apart from technically based exceptions – with alternatives) and shorter term retrofit to key buildings. Part of area wide neutral impact power generation by 2035 (E8).
- **Hydrogen Energy Central** – working with partners to ensure that Hydrogen in both fleets and properties is developed. Stockport to be leading hydrogen town by 2030 (E11).
- **Housing heat retrofit** – 100% coverage scheme across the area in conjunction with solar and district heat programmes. By 2030 to support GM Zero Carbon 2038 (E5).



DIGITAL - 10 Projects as set out in Section 5.3 of the Technical Report, including:

- **Full Fibre Future**– Ensuring Full Fibre Ducting to all key sites in 5 years, with all premises having this within the plan. Smart thinking ahead to minimise retrospective disruption (D1).
- **Smart Lighting Central**– to connect Local Full Fibre Networks with public owned street infrastructure. 100% smart lighting in 10 years and interactive ‘add on’ capabilities (D2).
- **Digi-Port** – shorter term project to ensure all town centre walking routes are digital mapped to allow relevant app development and use for commercial and public benefit – for example historic trail, but linked to local business opportunities. Within first 3 years (D6).

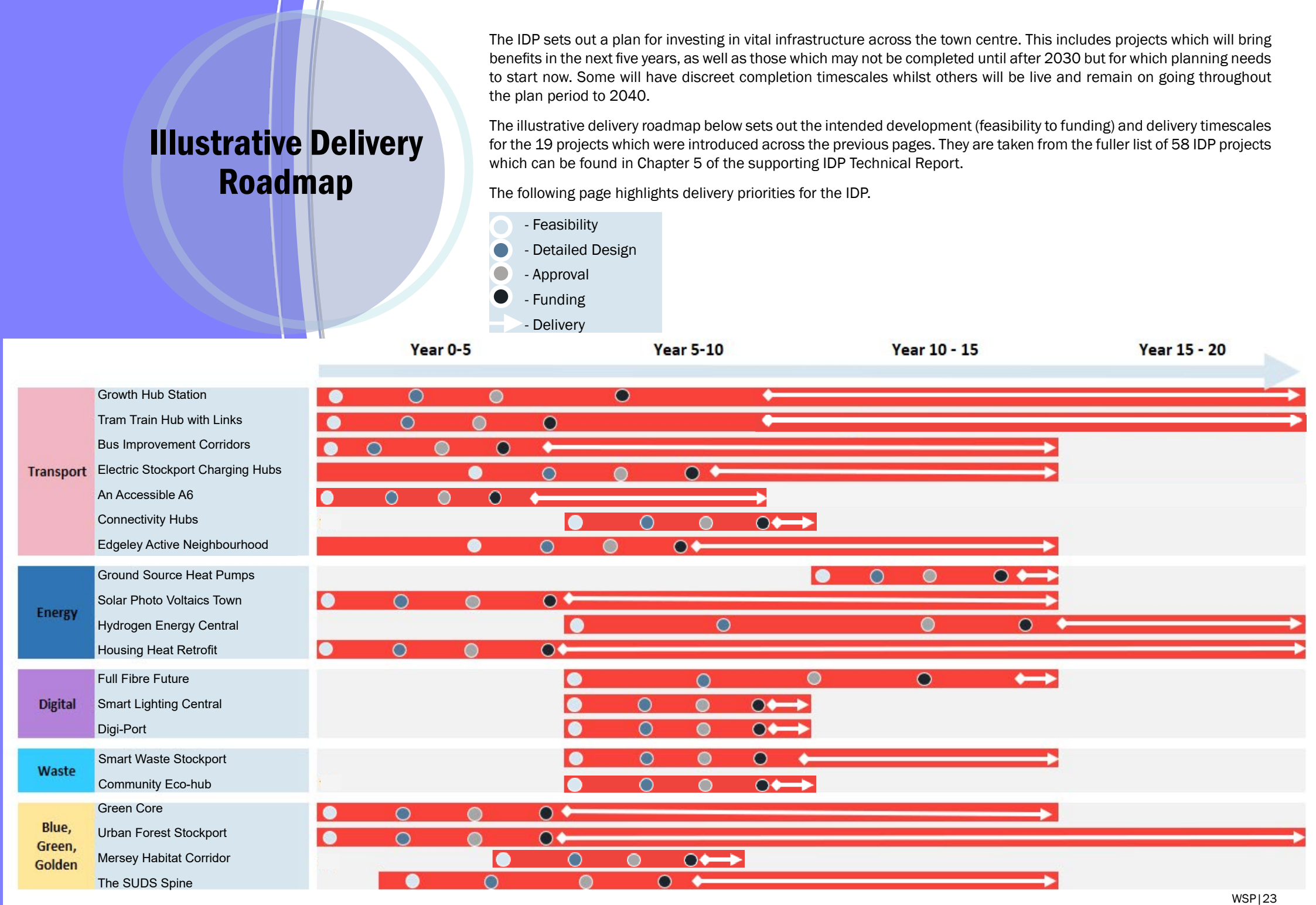
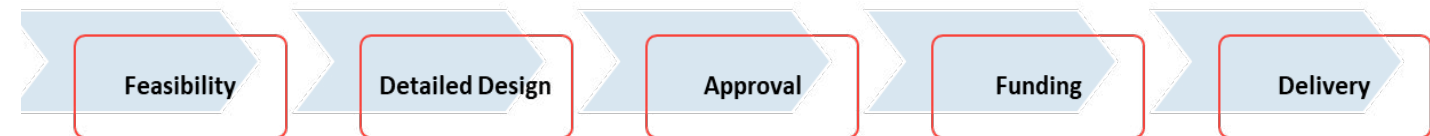
WASTE - 5 Projects as set out in Section 5.4 of the Technical Report, including:

- **‘Smart Waste Stockport’** - Combination of schemes including; 100% electric refuse fleet, underground collection & community eco/ recycling hubs within old and new development. Reducing waste volume & impact by 80%+ (W1, W2).
- **Community Eco Hub** - Community facility that includes a reuse & repair shop/ cafe. Enables domestic items/ furniture to be checked, cleaned, repaired and redistributed or sold back to the community (W3).

BLUE / GREEN / GOLDEN - 7 Projects as set out in Section 5.5 of the Technical Report, including:

- **‘Green Core’** – To double our central greenspace by area in 20 years, within spaces, allotments and vertical/building greenery as well as our parks and river valley (BGG1-6).
- **Urban Forest Stockport** – Double the number of trees (1000+) to address climate change (BGG6).
- **Mersey Habitat Corridor** – rebuilding natural habitat, combining with water filtration and leisure activity to make this a dynamic place. Doubling habitat value and leisure use during the plan (BGG5).
- **The SUDS Spine** - A core east-west route linked with the Mersey corridor to manage drainage and act as a key biodiversity and living space. Removal of peak flood risk by 2030 (BGG2).

Delivery of such major infrastructure interventions requires a number of different stages to be completed. Whilst each stage will be unique to each project depending on matters such as complexity, funding and stakeholders, the following key process is likely to occur in most cases.





METROLINK

We want to work with partners to accelerate early delivery of Metrolink and tram train to Stockport town centre. We will work extensively to reduce both technical and process delays and fast-track schemes. The advantage of early intervention is increased resilience and the ability to build new communities such as Brinksway around the tram rather than around the car.

STATION GROWTH HUB

We have developed our initial masterplan for the station growth hub. This evolves from early interventions such as a new pedestrian route across the tracks to a fully integrated 'place' at the heart of both communities and commercial development. Replacing the Greek Street Bridge will also be important as this will support the delivery of Metrolink into Stockport. Accelerated delivery processes in conjunction with Network Rail, TFGM and other partners will be facilitated by Stockport Council.

DIGITAL

We will work with utilities providers to develop our comprehensive plan to deliver a grid of infrastructure that enables the supply of 5G and other digital enabling amenities by supplying a new threshold or platform of amenity. While this may involve early costs and extensive planning the benefits of valuing such services in a more co-ordinated manner will be less disruption, more efficient delivery and flexible supply over forthcoming years. Digital 'add ons' will bring our places and spaces to life – we actively encourage innovation and setting of digital amenities into our environments.

GREENING STOCKPORT

We will at least double the amount of green space in Central Stockport over the next 20 years, including both horizontal and vertical interventions. This starts by using what we have better (particularly the river corridors and our park spaces), embedding green into both formal and informal public spaces and setting new standards for supply of greenery, including ambitious tree planting. We want to work with key agencies and commercial developers and operators in achieving this. This is not an option but a necessity.

Priorities

WASTE

We will develop a comprehensive waste management plan for Stockport town centre, including development of an intrinsic waste servicing system for our major new development at Brinksway, setting a European Benchmark for waste reduction and management. Addressing waste will include minimising unnecessary use of Energy.

ENERGY

To help meet Greater Manchester's ambition to be carbon-neutral by 2038 we will ensure that all new homes and commercial/industrial buildings are net zero carbon by 2028. This will include supporting the development of electrified, efficient and low carbon homes with local energy generation and storage and use.

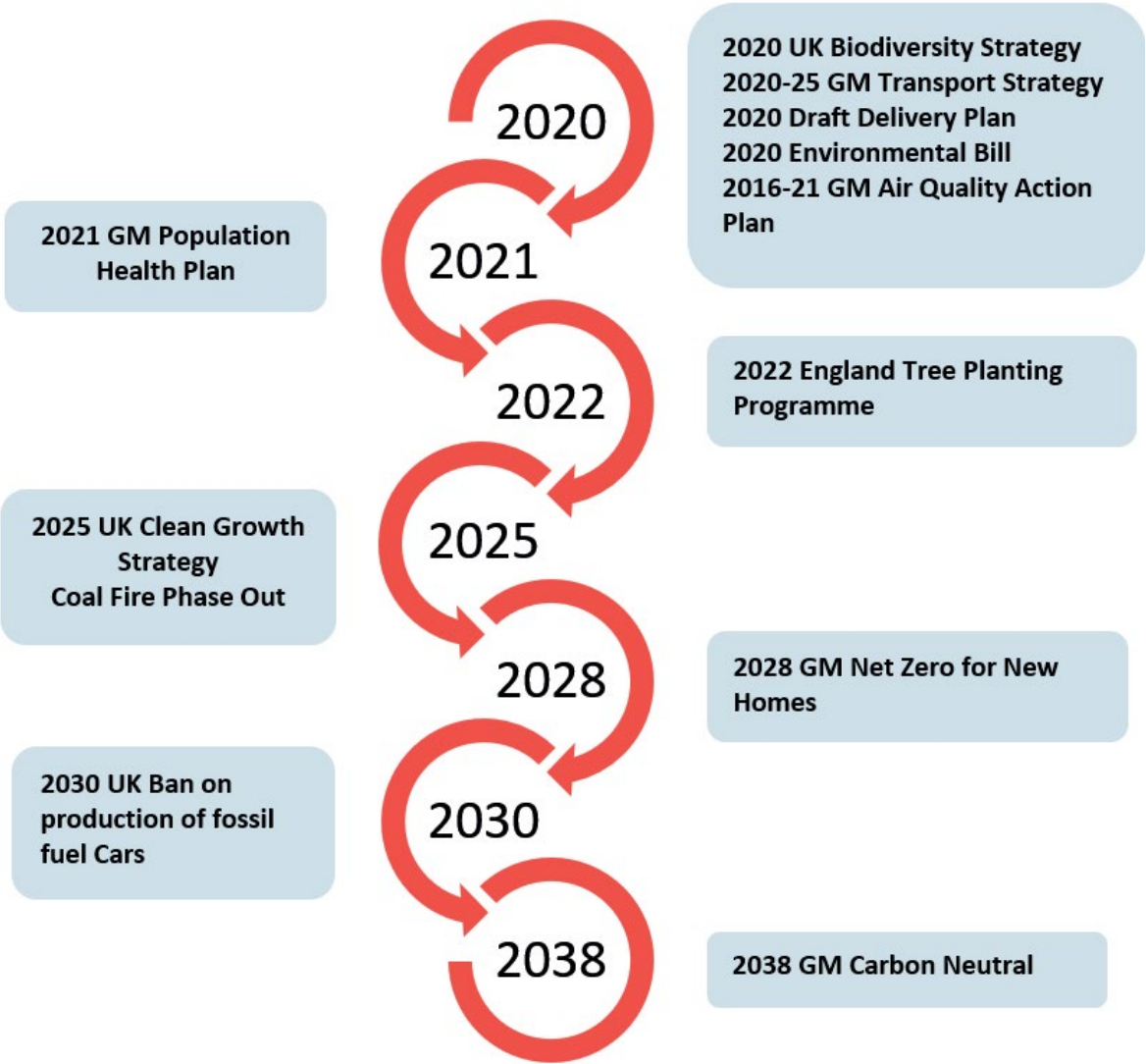
As well as each of these significant interventions we do not underestimate the cumulative value of the smaller opportunities suggested that lead to a significant difference and which can be added throughout our plan. Indeed, we recognise that while these priorities are 'game-changing' in themselves it is imperative that we develop our series of wider interventions into 'ready to go' schemes to enable swift delivery, ability to react to changing environments and commercial, funding and social changes quickly.

Delivering in Support of Environmental Milestones



The implementation of projects will take Stockport town centre forward, but must be responsibly delivered and fit into the wider context of local, regional and national commitments to save our environment.

There are a number of key environmental policy milestones and targets related to UK and Greater Manchester policies that are set to have an influence during the 2020 to 2040 period when projects in this IDP are planned to be delivered. There are set out in the timeline, building towards Greater Manchester achieving carbon neutrality by 2038.





Investment costs

Whilst the proposed coordinated approach to delivery set out in the roadmap should help deliver cost and delivery efficiencies, including co-ordination and resources, delivery of such an ambitious vision for Stockport will take significant investment.

Whilst further detailed feasibility studies are required to assess the full scope and detailed costs of the individual projects, it has been possible to assess the overall indicative costs of achieving the infrastructure vision for Stockport.

These costs have been totalled by themes to demonstrate an indicative ask for investment. It should be noted that a considerable portion of the £1.3bn Transport costs are related to the connection of Metrolink and Tram Train into central Stockport. Moreover, these include elements where there are overlapping themes such as public realm/streetscape.

£5m+
Digital

£10m+
Blue Green Golden

£1.3bn+
Transport

£19m+
Waste

£11m+
Energy



Delivery, funding & how you can help

This prospectus includes a range of interventions that collectively will have a transformational effect on central Stockport positioning the town at the heart of a rapidly evolving GM city region. The real power of planning our infrastructure comprehensively and in advance is in the integration.

It cannot be delivered by Stockport Borough Council alone and the delivery and success of the infrastructure plan is dependent on support, funding and resources from a range of Stakeholders with some elements being wholly delivered by external partners and organisations.

The Council will continue to bring together stakeholders from a range of disciplines using their collective experience and expertise to deliver the plan. We will also capitalise on existing and potential future funding opportunities and steer the short, medium and long term implementation of the plan's measures.

Funding will be key to achieving the objectives and delivering the plan and it is recognised that this is likely to remain a challenge. Identifying, providing and securing funding will be a fundamental role of the Council. Collaborating to secure external funding and ascertaining possibilities of combining internal funding will be a key task in the delivery of the infrastructure plans measures. Good cases make good investment. We will work with public and private sector partners to plan such investment and help create conditions for positive cases to be made.

A number of measures do not rely on public sector funding and have the potential to deliver significant long-term benefits, helping to save money by reducing the need for significant

investment in the future. Long term thinking for critical infrastructure is key.

The substantial plans for growth in the Stockport area offers extensive opportunities to secure third-party funding and collaboration in embedding sustainable infrastructure into new developments through both capital and revenue funded measures. This may only require relatively small budgetary contributions from the public purse but has the potential to contribute considerably towards the plan's 2040 vision.

As set out at the beginning of this prospectus delivering the infrastructure described in this plan will result in:

- A best in class digital network;
- A talented, growing workforce in an agile work environment; and
- A thriving community in a green, sustainable and resilient town centre.

Looking forward by 2040 Stockport's investors, businesses and community will be reaping the rewards from the planning and investment they put in now.

WE INVITE YOU TO JOIN US ON THIS JOURNEY...



Engage with Stockport Council and Partners to explore these opportunities further

Contribute to our ongoing development of this plan (including subsequent detailed document)

Help support our need for accelerated delivery processes, streamlining systems and processes, and ensuring case-making targets the challenges of the future

Talk to your partners about what you can contribute collectively

How you can join us for this important journey

Stockport Council
Fred Perry House
Edward Street
Stockport
SK1 3UR

September 2020