



# SEND IMPROVEMENT JOURNEY

Health and Wellbeing Board  
August 2020



*An Inclusion Strategy and action plan will be co-produced with partners, parents & carers and young people across Stockport*

**Stockport Health and Well-being Board**

**Stockport Family Partnership Board**

## **SEND Joint Commissioning Board**

Made up of the CCG and Council as the main commissioners of services and drawing on the advice of others, to implement the joint commissioning plan within available funds

## **The SEND Board**

The SEND Board has developed the SEND Strategy which sets out the ambition for what we are trying to achieve together for children and families

**The SEND Board owns...**

### Written Statement of Action

The steps we are taking to improve the arrangements and deliver the strategy

### Outcomes Framework

How we will assess the progress we are making

### Risk Log

Identifying risks to delivery of the plan, and ways to deal with them or highlight them to Board

**SEND Joint Commissioning**

**SEND Support and EHCP**

**Co-production, Information and the Local Offer**

**Workforce Development Plan**

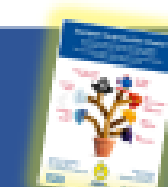
**Communications and Engagement Plan**

## **Co-Production Charter**



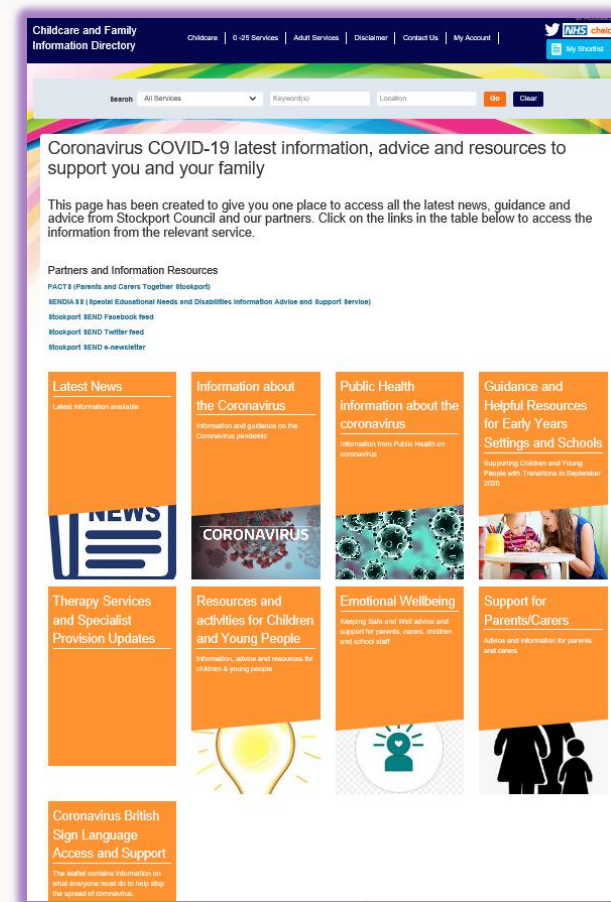
All of our work is co-produced with parents/carers and children and is on our Local Offer website

Link: <http://sensupportstockport.co.uk>



## Covid-19 response

- Multi-agency emotional well-being and SEND Hub launched as part of revised early help offer. The largest area has been emotional well-being. Over 70 cases have been discussed at the hubs since inception.
- Covid risk assessments undertaken on the EHCP cohort and reviews underway
- Multi- agency webinars co-delivered with PACTS (Parent/carers forum) for parent/carers on relevant topics such as: sleep, home schooling, children's therapies, teenage mental health, the local offer, emotional well-being, SENDIASS and planning aids for young people with complex needs
- Local authority covid-19 newsletter to settings produced, sharing communication across the borough and sectors, including latest guidance and support offers. Issue 53 was published on Friday
- [School Enquiries email](#) has received 160 referrals of which 6 (4%) refer to children with SEND. 100% have been resolved successfully



## Return to schools/setting in September

- Transition group established with over 50 representatives (both professional and parents) focussing on each transition stage. Materials produced and distributed to schools/setting and on local offer
- Transition webinars undertaken for both settings and parent/carers
- Inclusion webinar undertaken for settings and parent/carers
- All special schools have specific transition plans in place, including transition days, some use of video tours etc
- All special schools have had at least 34% of children in last month, with some having 80% attendance on a rota system
- Actual attendance in school higher than DFE reported figures, for example in primary sector there are 541 children with an EHCP and 318 (56%) in school and 250 (44%) not in school. The DFE reported figures are 171 in attendance - this is due to part time timetables
- Working group set up with representatives to look at a revised emotional wellbeing offer. Joint training by Educational Psychology and Pennine Care in formation of team around the school staff and school/setting staff for start of the term



## Key Programme highlights

- SEND Improvement programme has continued at pace despite covid-19
- Virtual **recruitment** which included young people undertaken:
  - New Strategic Lead for SEND and Inclusion in post - Bev Milway
  - Operational lead started- John Gelder
  - Interim deputy operational lead in post- Alison Poyser
  - 4 new interim staff starting as Assessment and Reviewing officers to bolster capacity
- Key **governance documents** co-produced – co-production charter, SEND strategy and quality assurance framework – focus on embedding as best practice and evidencing impact
- **SEND community** inclusion group established and meeting virtually monthly
- Network of champions set up - over 100 champions (parents and professionals) meeting virtually
- Local offer reviewed, co-created with input from young people, parents and professionals and new version now live
- Emotional wellbeing hub and SEND hub launched
- DSG review recommendations approved, public consultation will start in September
- Monthly SEND scrutiny meetings - elected members also have access to the data dashboard
- Start Well approach – identified in SEND inspection as area of joint working for 0-5 year olds – further emphasised in early years peer review



# Joint Commissioning

Memorandum of understanding between local authority and CCG

Joint investment plan across local authority and CCG - £1.4mil

Joint priorities for commissioning as detailed in the joint commissioning plan

1. Effective early help for all children and families
2. Timely access to services
3. Family and Parental support
4. Mental Health and Emotional Wellbeing
5. Speech, Language and Communication
6. Personal Budgets and Individual Commissioning
7. Preparing for adulthood



# Outcomes Framework

*The draft Outcomes Framework has been consulted on numerous times and has won consensus. It has the potential to drive improvements in services and support across all partners and contractors and thereby improve the lived experience of children and young people with SEND.*

*PACTS – Stockport Parent Carer Forum*



I FEEL SAFE

I FEEL PART OF MY LOCAL COMMUNITY

MY VOICE IS HEARD AND ACTED UPON

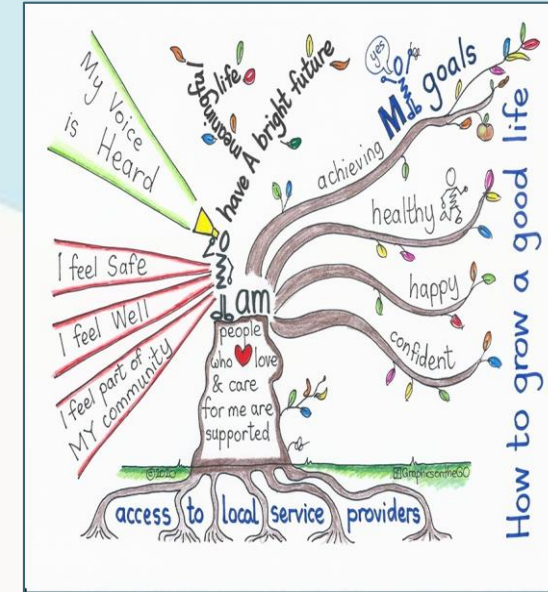
I ENJOY GOOD HEALTH AND WELL BEING

I AM HAPPY AND HAVE PEOPLE I CAN TRUST

I AM CONFIDENT AND ABLE TO REACH MY GOALS

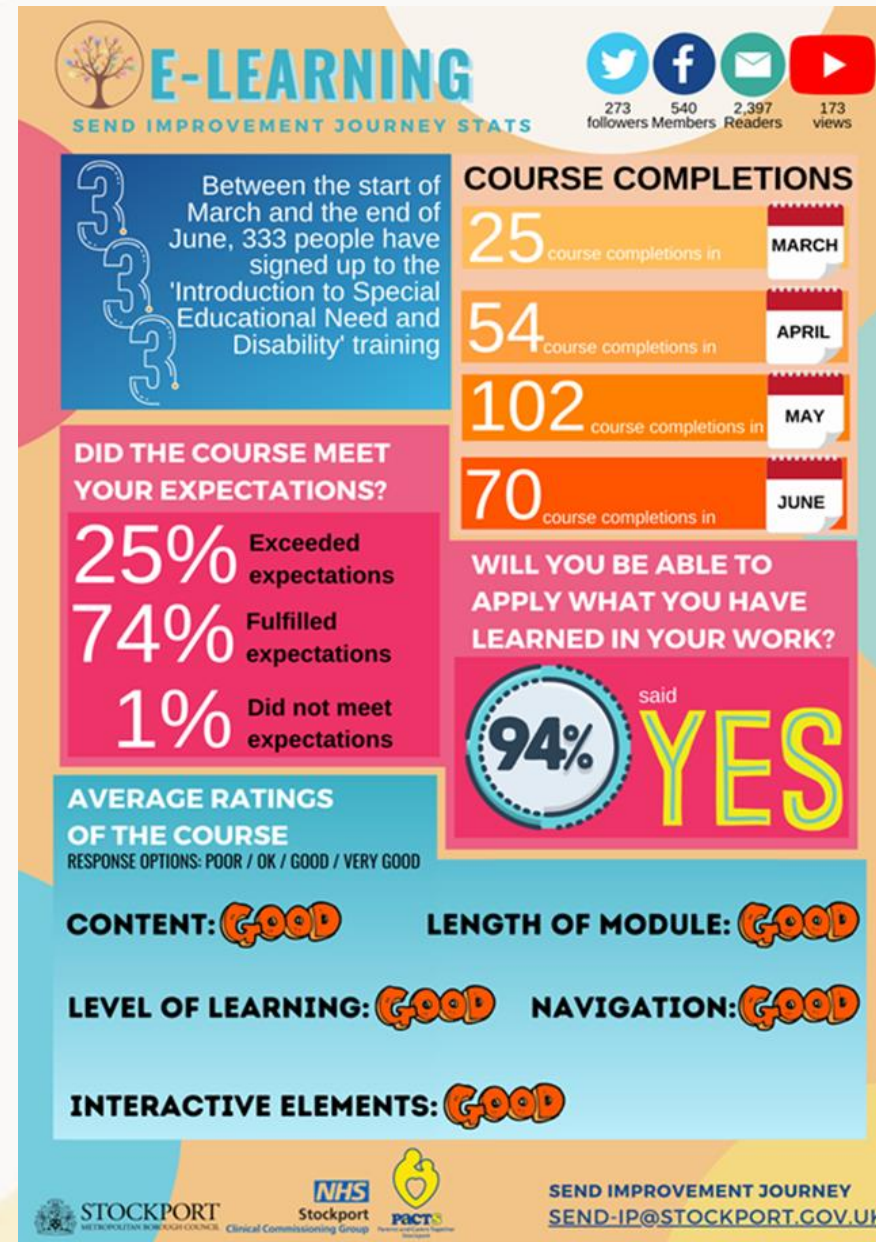
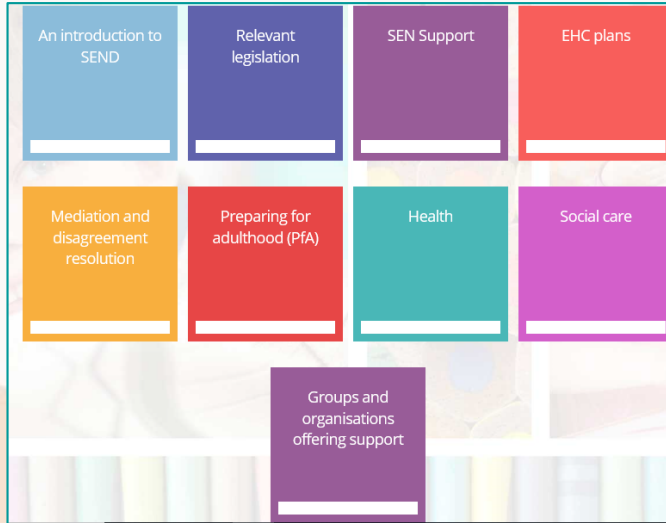
THE PEOPLE WHO LOVE AND CARE FOR ME ARE  
ENABLED TO DO THIS

- Outcomes framework co-produced with parent carers/young people and professionals
- Input gained from Council for Disabled Children to shape the development of the outcomes framework and future training being planned
- Working group across sector to agree on data matrix
- Implementation plan being produced to be signed off in August
- Focus will then be on embedding the outcomes through the EHCP and annual review process and underpinning future commissioned contracts





# SEND E-Learning



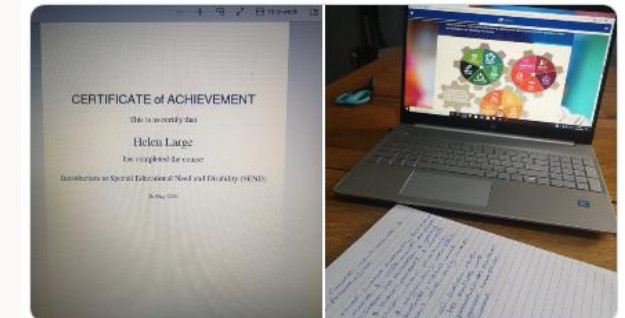
SMBC SEND @SMBC\_SEND · 27 May  
 Well done Helen 🏆 and thanks for the great feedback! Our e-learning for SEND is for anyone with an interest - Visit Stockport's Learning Pool to take part... and yes, there is a certificate 📄💖 #SEND #Stockport #sendchampion



Helen Large @lively\_helen · 26 May  
 Did my e-learning today via Stockport gov learning pool. Was really informative and I really enjoyed it 😊  
 @BevMilway @SMBC\_SEND @woodford\_claire @PACTSTOCKPORT



Did my e-learning today via Stockport gov learning pool. Was really informative and I really enjoyed it 😊  
 @BevMilway @SMBC\_SEND @woodford\_claire @PACTSTOCKPORT



9:51 pm · 26 May 2020 · Twitter for Android

8 Retweets and comments 30 Likes

Bev Milway @BevMilway · 26 May  
 Replying to @lively\_helen, @SMBC\_SEND and 2 others  
 Brilliant, spread the word!

Helen Hayes @HelenMHayes1 · 26 May  
 Done mine too, a great resource 🙌🙌🙌  
 Glad I could answer the questions 🙌



## DFE Feedback Meeting

- Dfe commended the Stockport Covid-19 response which is regarded as very thorough
- Impressed with continuation of SEND Improvement work through covid
- Will need to look at trajectories of waiting lists
- Formal monitoring will commencing in November 2020 against written statement of action
- Confident that monitoring on EHCP timeliness in place

*Great progress and well done to all the team.  
There isn't any complacency here so good to see\**

*\*quotes from the lead DfE advisor*

*There is a real wealth of information about clear progress\**

## Key priorities for the SEND programme

	Actions
<b>Timeliness of EHCPs</b>	<ul style="list-style-type: none"> <li>• Robust recovery action plan with clear trajectory for improvement monitored and overseen by SEND board and children's SMT</li> </ul>
<b>Personal Budgets</b>	<ul style="list-style-type: none"> <li>• Progress reviewed and action plan in place</li> </ul>
<b>Workforce Development</b>	<ul style="list-style-type: none"> <li>• SEND eLearning developed and disseminated</li> <li>• Virtual training, webinars, learning circles and consultation being delivered due to covid</li> <li>• Induction programme being developed for Stockport Family and education services - SEND will be embedded in this.</li> </ul>
<b>Increased demand</b>	<ul style="list-style-type: none"> <li>• Implementation of the DSG recommendations - assessing role of specialist settings, sufficiency of places and inclusion and outcomes</li> <li>• Two special schools are going to be re-built, but there is an increasing complexity of needs</li> <li>• The impact on demand will be further emphasised by covid-19</li> </ul>
<b>Joint Commissioning</b>	<ul style="list-style-type: none"> <li>• Joint commissioning now established as part of the CCG and council working practices with stronger relationships and better links to partnership boards such as CAHMs (renamed). Consideration for new Learning Disability ASD All Age Board to be worked up in September.</li> <li>• Delivery underway for strategic priorities outlined in joint commissioning plan - action plans being developed for each key area.</li> </ul>

## EHCP and annual review process

- The 2019/20 SEN2 data return for Stockport identified historical issues in relation to calculating timeliness.
- The appropriate adjustments resulted in a reduction in timeliness to 45.6% for 2019/20.
- A robust recovery and action plan is in place which has been signed off by SEND board. It is being delivered with pace and rigour and monitored by the board
- The confident projection is that Stockport will return a rate of 85% EHCPs completed within 20 weeks for 2020/21.
- Timeliness issues in relation to EHCP completion is a regional and national challenge as evidenced by recent SEN2 data return. The average timeliness for the North West is 59.1%
- Annual review processes – being progressed
- Review of operational guidance and paperwork
- Robust staff training package in delivery, including outcomes training/lived experience/liquidlogic and legal
- New quality assurance framework to ensure consistency and quality, co-produced and signed off by board
- New socialcare protocol in relation to advice co-produced

## Next Steps

- Progression with Designated Schools Grant (DSG – high needs block) review recommendations- recruitment of programme manager
- Embedding co-production charter and linking into workforce development across the local area partnerships
- SEND e-learning- recommendation for this to be mandatory across the council and partners
- Further work on joint commissioning- action planning on priority areas including waiting times
- Work across Stockport in relation to the covid-19 recovery offer including attendance and emotional well-being
- Embed outcomes framework in practice and commissioning
- Exploration underway to develop a young inspectors programme to support quality assurance
- DfE formal monitoring of the written statement of action to resume in November
- Re-inspection expected early 2021.