

NPS Stockport Ltd  
Atlas House, Hercules Office Park  
Bird Hall Lane, Cheadle Heath  
Stockport, SK3 0UX

NPS Stockport Ltd

Tel No. 0161 495 6000

Fax No. 0161 495 6138

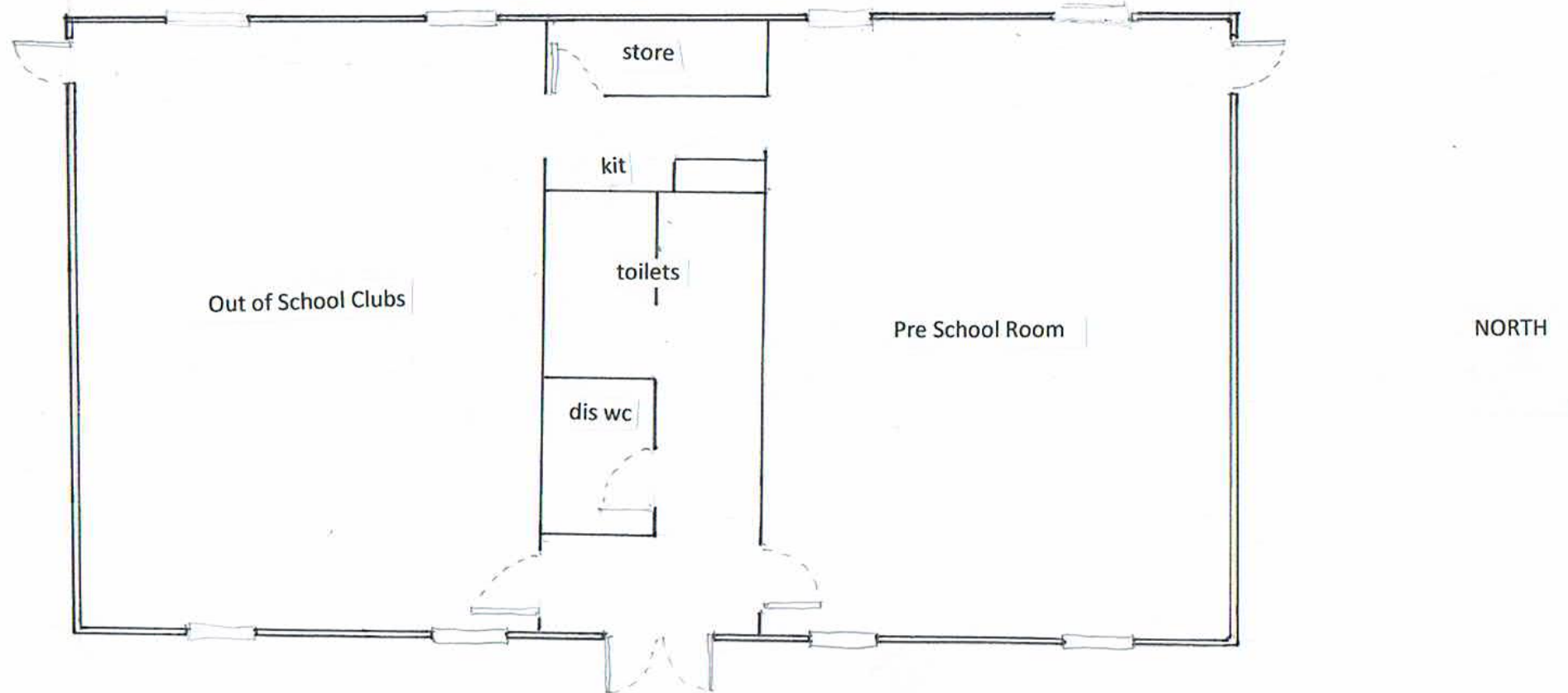


Title: Land and Buildings at Romiley Primary School

Date: 06/04/2011

Scale: 1:1250

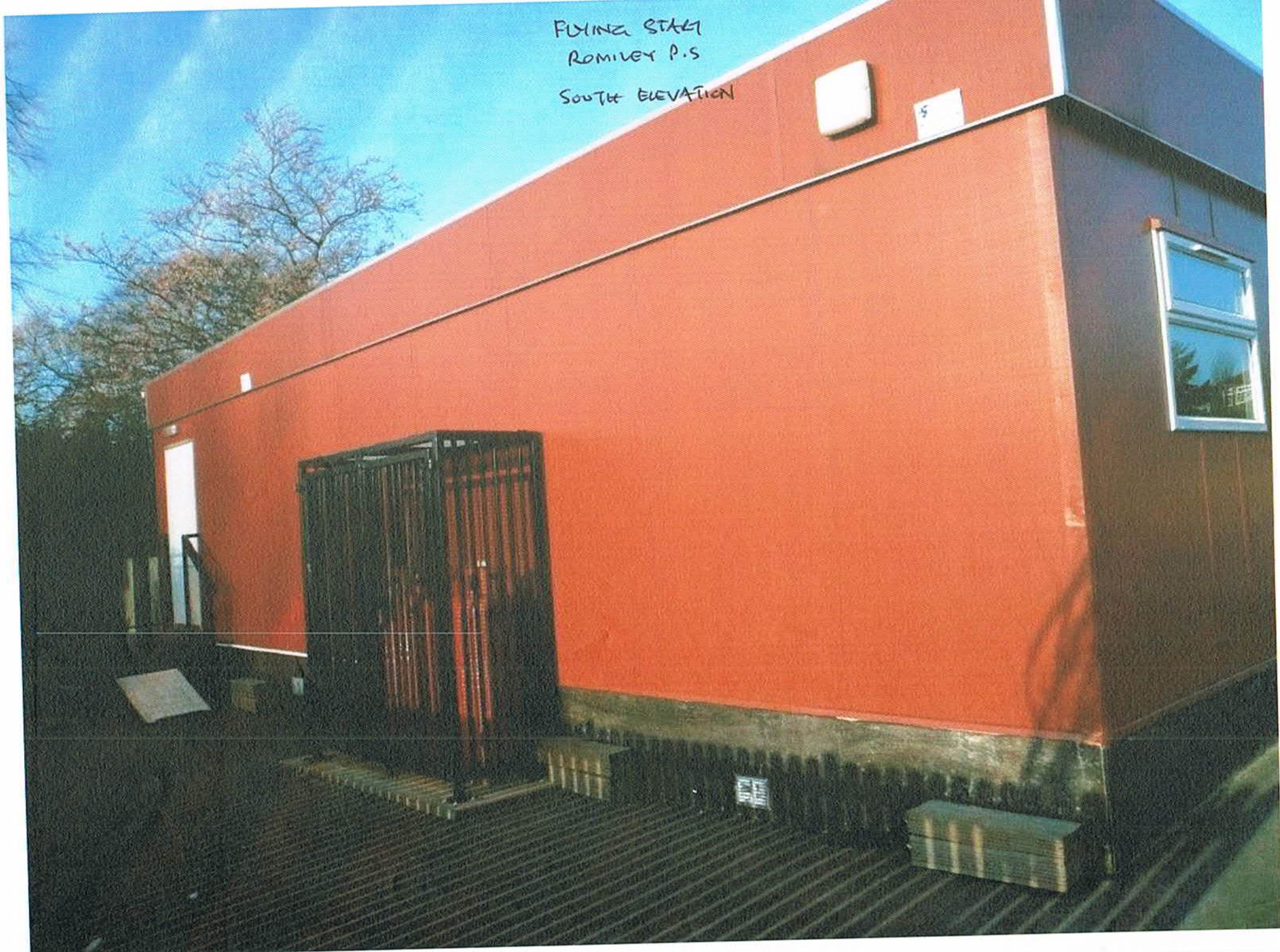
Reproduced from the 2011 Ordnance Survey 1:1250 mapping with the permission of the controller of Her Majesty's Stationery Office. Crown Copyright. Stockport MB 0161 495 6000. Unauthorised reproduction infringes Crown Copyright and may lead to prosecution or civil proceedings.



ROMILEY PRIMARY SCHOOL – PRESCHOOL AND OUT of SCHOOL CLUBS BUILDING



FLYING START  
ROMILEY P.S  
SOUTH ELEVATION



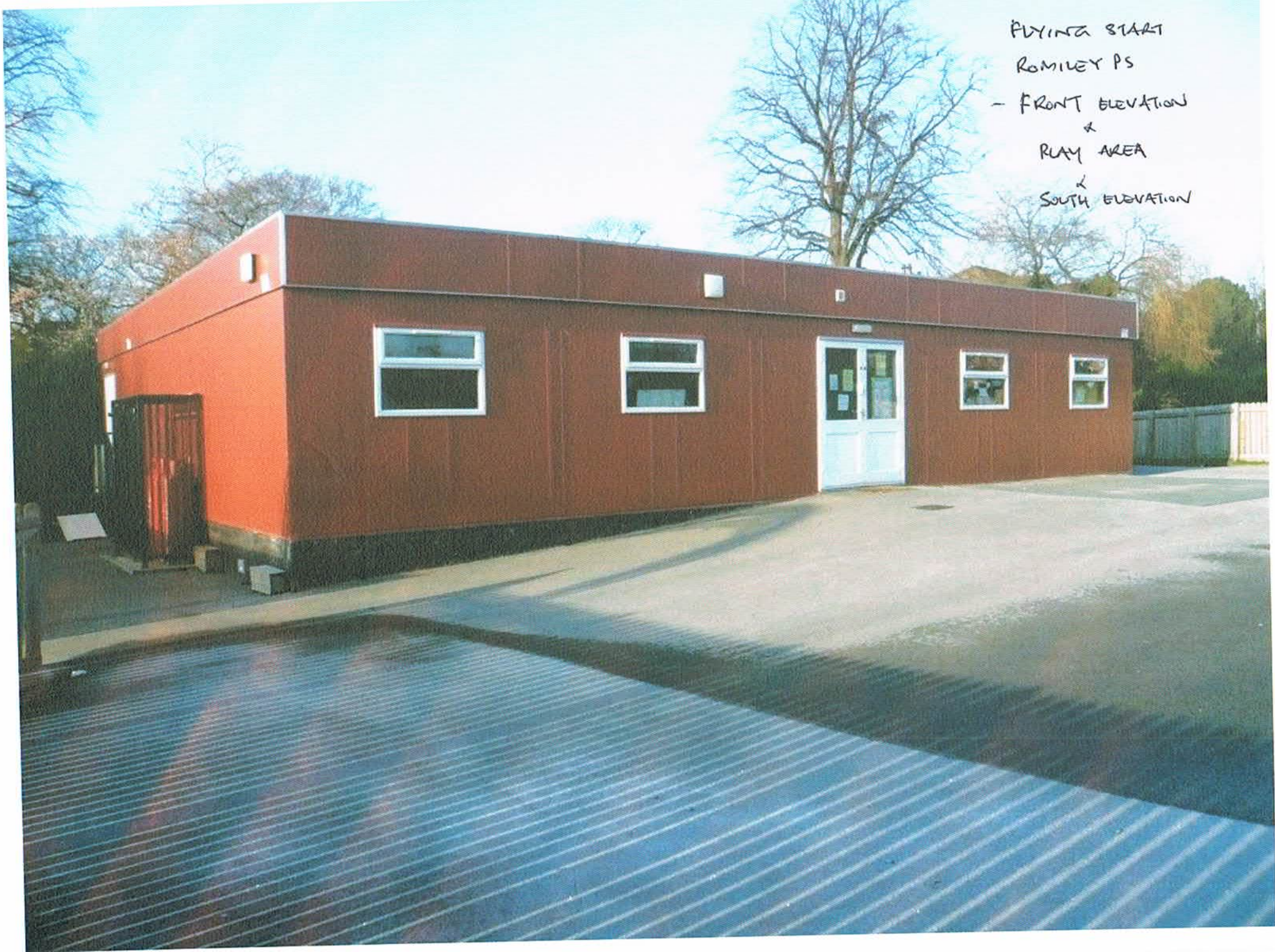


FLYING START  
ROMILEY P.S.  
NORTH ELEVATION





FLYING START  
ROMILEY PS  
- FRONT ELEVATION  
x  
PLAY AREA  
x  
SOUTH ELEVATION





PLYING STAIR  
ROMILEY P.S  
CHILDRENS TOILETS





PILING START  
ROMILEY P.S  
PLAY AREA  
+  
CONTAINER  
USED BY PTA





FLYING START

ROMILEY P.S

OUT of SCHOOL clubs ROOM





Flying Start  
Romney PS  
Pre School Room





FLYING START

ROMNEY PS

: PRAY ROOM LEFT

- OUT OF SCHOOL  
CLUBS





FLYING START  
ROMNEY  
REAR  
ELEVATION







FLYING STAR

ROMNEY P.S.

: DISABLED TOILET





POINZ START

ROMILEY P.S.

: REAR ELEVATION