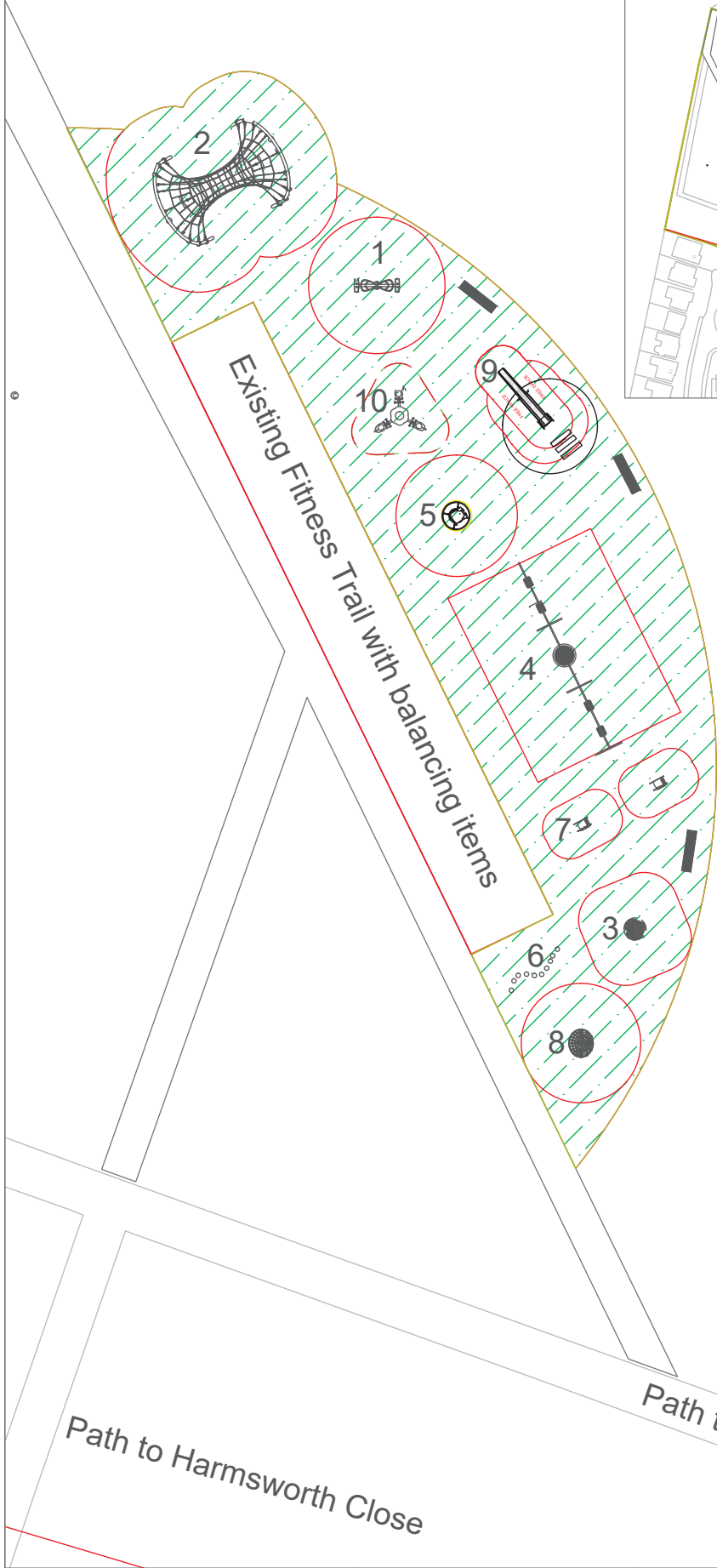


Path to Kingston Grove



Proposed Play Equipment

- 1 Surf spinner - dynamic rotator.
- 2 Arc net climber - 2.5 metre high
- 3 Ground level trampoline
- 4 Three bay swing with inclusive nest seat
- 5 Simulator - Inclusive rocker
- 6 Balancing pods
- 7 Springy play
- 8 Access Whirl - Inclusive rotator
- 9 Embankment slide
- 10 Junior see saw

Path to Harmsworth Close

Path to Buckingham Road



STOCKPORT
METROPOLITAN BOROUGH COUNCIL

AMENDMENTS				
DRAWN	CHECKED	DATE	No	AMENDMENT

JOB TITLE
HEATONS_NORTH
DRAWING TITLE
PEEL_MOAT_INDICATIVE_DESIGN

Filename			
Drawn	Engineer	Checked	Approved
Date	Date	Date	Date
Scale 1:200 @ A3			
Drawing No.			Revision