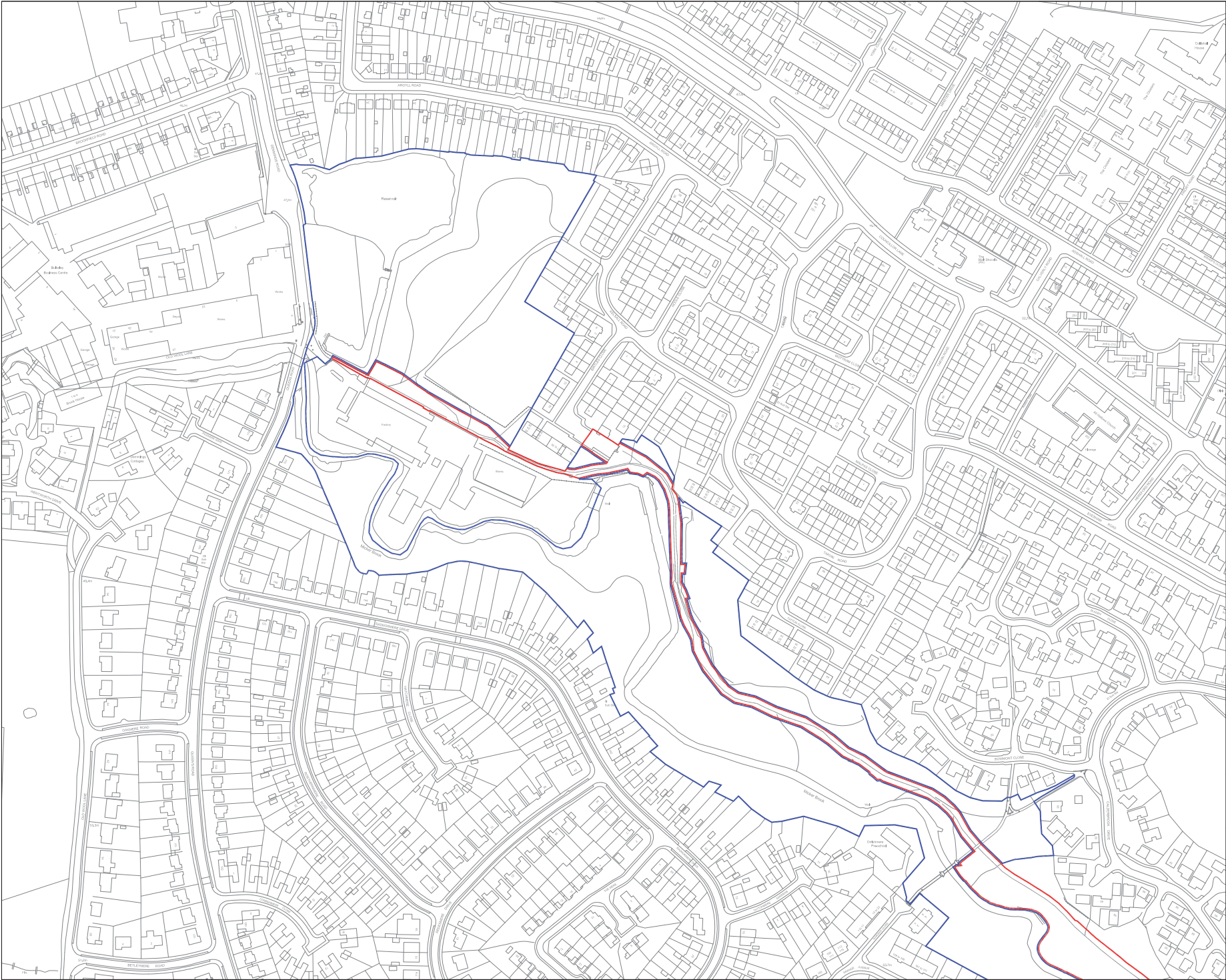



This map is reproduced from Ordnance Survey material with the permission of Ordnance Survey on behalf of the Controller of Her Majesty's Stationary Office
© Crown copyright. Unauthorised reproduction infringes Crown copyright and may lead to prosecution or civil proceedings. Stockport Metropolitan Borough Council
100019571 2016



Rev.	Drawn	Checked	Date	Revision Details
AMENDMENTS				



STOCKPORT
METROPOLITAN BOROUGH COUNCIL
STOCKPORT HOUSE
STOCKPORT
CHESHIRE SK9 1JF

Job Title
**CHEADLE HULME
CYCLE PACKAGE**

Drawing Title
**APPLICATION BOUNDARY
SHEET 1 of 4**

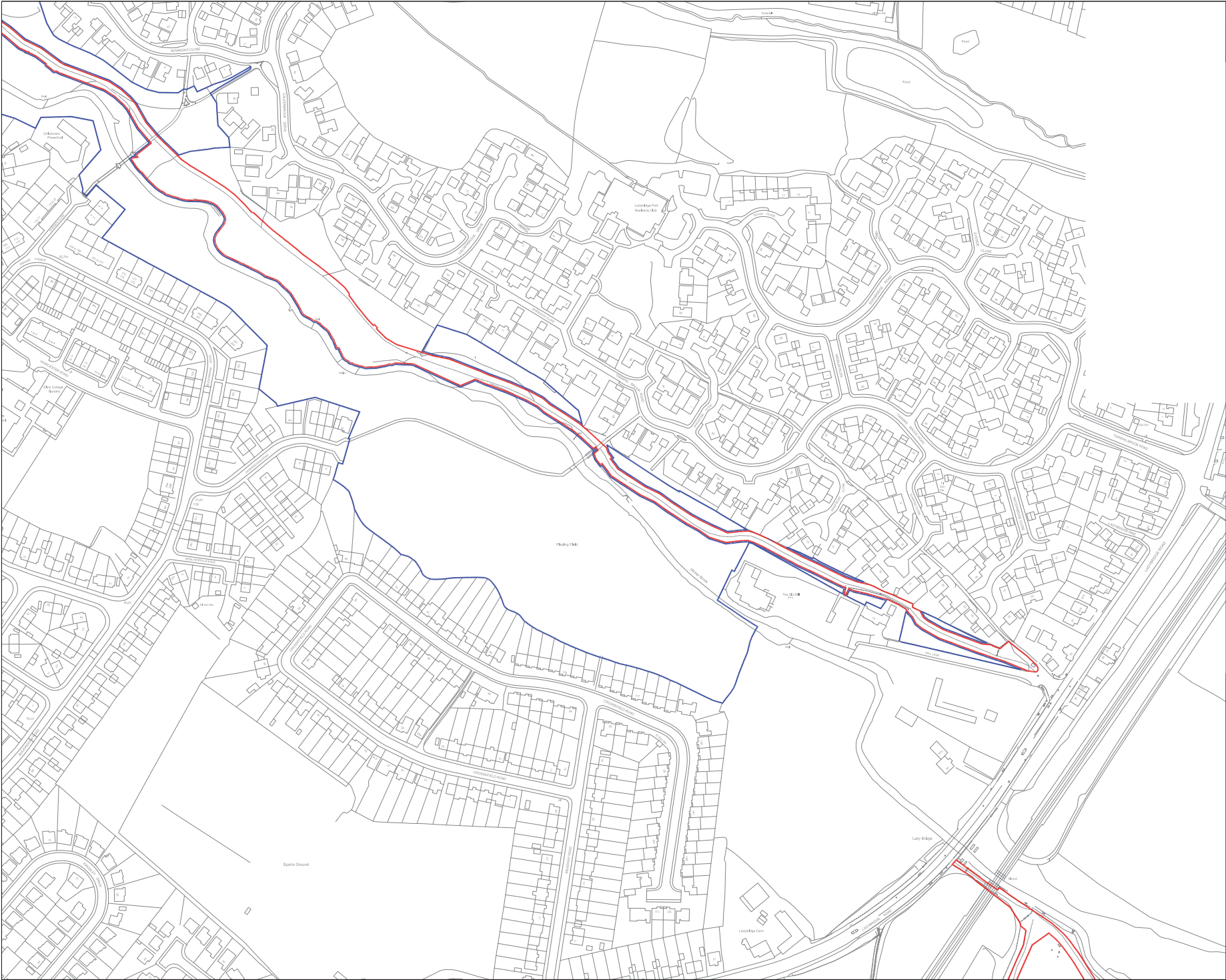
Drawn	Engineer	Checked	Approved
ALB	ALB	MJ	NW
Date	Date	Date	Date
21/03/17	21/03/17	23/03/17	23/03/17
Size	Scale		
A1	1:1250		

SCS No. Filename


Drawing No. Revision

0255_P_003 A

This map is reproduced from Ordnance Survey material with the permission of Ordnance Survey on behalf of the Controller of Her Majesty's Stationary Office
© Crown copyright. Unauthorised reproduction infringes Crown copyright and may lead to prosecution or civil proceedings. Stockport Metropolitan Borough Council
100019571 2016



Rev.	Drawn	Checked	Date	Revision Details
AMENDMENTS				





STOCKPORT
METROPOLITAN BOROUGH COUNCIL
CHADDS CLIFF ROAD STOCKPORT CHESHIRE SK11 1BS

Job Title
**CHEADLE HULME
CYCLE PACKAGE**

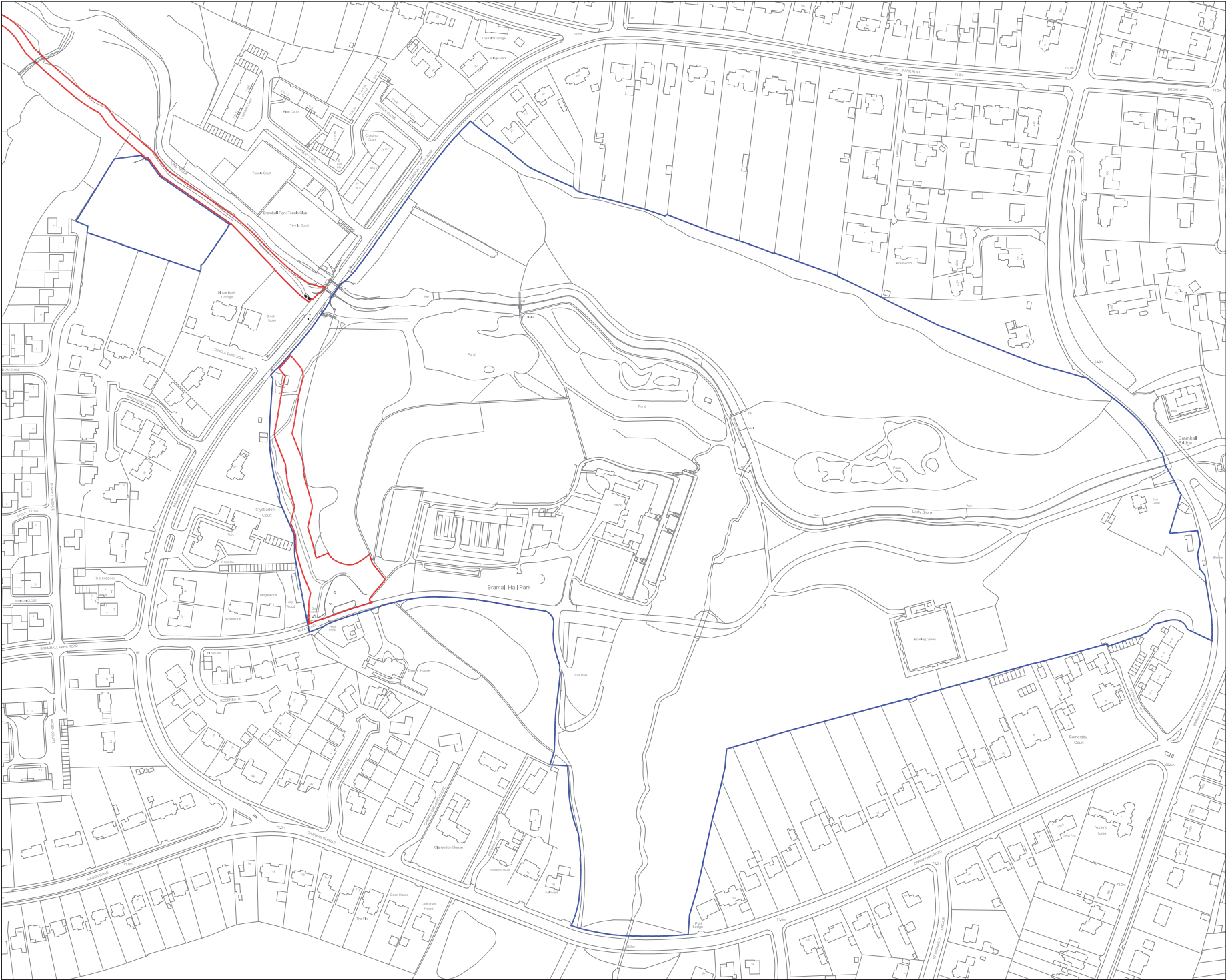
Drawing Title
**APPLICATION BOUNDARY
SHEET 2 of 4**


Drawn	Engineer	Checked	Approved
ALB	ALB	MJ	NW
Date 21/03/17	Date 21/03/17	Date 23/03/17	Date 23/03/17
Size A1	Scale 1:1250	A1	

SCD No.	Filename
Drawing No. 0255_P_004	Revision A

Rev.	Drawn	Checked	Date	Revision Details
AMENDMENTS				
 <div style="display: inline-block; vertical-align: middle; text-align: center;"> <h1 style="margin: 0;">STOCKPORT</h1> <p style="margin: 0;">METROPOLITAN BOROUGH COUNCIL</p> <p style="margin: 0; font-size: small;">STOCKPORT HOUSE STOCKPORT, CHESHIRE SK6 1JH</p> </div>				
<div style="display: flex; justify-content: space-between;"> <div style="width: 30%;"> <p style="font-size: x-small; margin: 0;">COUNCIL PERSON NAME</p> <p style="font-size: x-small; margin: 0;">COUNCIL POSITION NAME</p> </div> <div style="width: 60%;"> <p style="font-size: x-small; margin: 0;">JOB Title</p> </div> </div>				
<h2 style="margin: 0;">CHEADLE HULME CYCLE PACKAGE</h2>				
Drawing Title				
<h1 style="margin: 0;">APPLICATION BOUNDARY</h1> <h2 style="margin: 0;">SHEET 3 of 4</h2>				
Drawn	Engineer	Checked	Approved	
ALB	ALB	MJ	NW	
Date	Date	Date	Date	
21/03/17	21/03/17	23/03/17	23/03/17	
Size	Scale			
A1	1:12500 			
SGC No.	Filename			
Drawing No.			Revision	
0255_P_005			A	

This map is reproduced from Ordnance Survey material with the permission of Ordnance Survey on behalf of the Controller of Her Majesty's Stationary Office
© Crown copyright. Unauthorised reproduction infringes Crown copyright and may lead to prosecution or civil proceedings. Stockport Metropolitan Borough Council 100019571 2016



Rev.	Drawn	Checked	Date	Revision Details
AMENDMENTS				
				
STOCKPORT METROPOLITAN BOROUGH COUNCIL				
COUNCIL AREA STOCKPORT				STOCKPORT HOUSE STOCKPORT, ST. 20 Tel: 0161 255 1100
Job Title				
CHEADLE HULME CYCLE PACKAGE				
Drawing Title				
APPLICATION BOUNDARY SHEET 4 of 4				
Drawn	Engineer	Checked	Approved	
ALB	ALB	MJ	NW	
Date	Date	Date	Date	
21/03/17	21/03/17	23/03/17	23/03/17	
Size	Scale			
A1	1:1250@A1			
SCD No.	Filename			
Drawing No.				Revision
0255_P_006				A

This map is reproduced from Ordnance Survey material with the permission of Ordnance Survey on behalf of the Controller of Her Majesty's Stationary Office
© Crown copyright. Unauthorised reproduction infringes Crown copyright and may lead to prosecution or civil proceedings. Stockport Metropolitan Borough Council 100019571 2016



Key

- Existing Tree
- Tree to be Removed
- Proposed Tree
- Proposed Woodland Under storey Planting
- Proposed Ground Flora / Grassland
- Flexi-Pave Surfacing
- Flexi-Pave - Build Up Construction in Areas of Poor Drainage
- Flexi-Pave - Vehicular Construction
- Flexi-Pave - Build Up Construction (Areas Close to / adjacent to Japanese Knotweed)
- Brideway Gate
- Access Gate
- Proposed Post and Rail Timber Fence Refer to Dwg 0255_P_072
- Existing Fence to be Removed

C	BL	AJB	07/08/17	Division of New and Best from the plant schedule
B	BL	AJB	04/04/17	Addition of Best schedule
A	BL	AJB	10/03/17	Amended to key
Rev.	Drawn	Checked	Date	Revision Details

AMENDMENTS

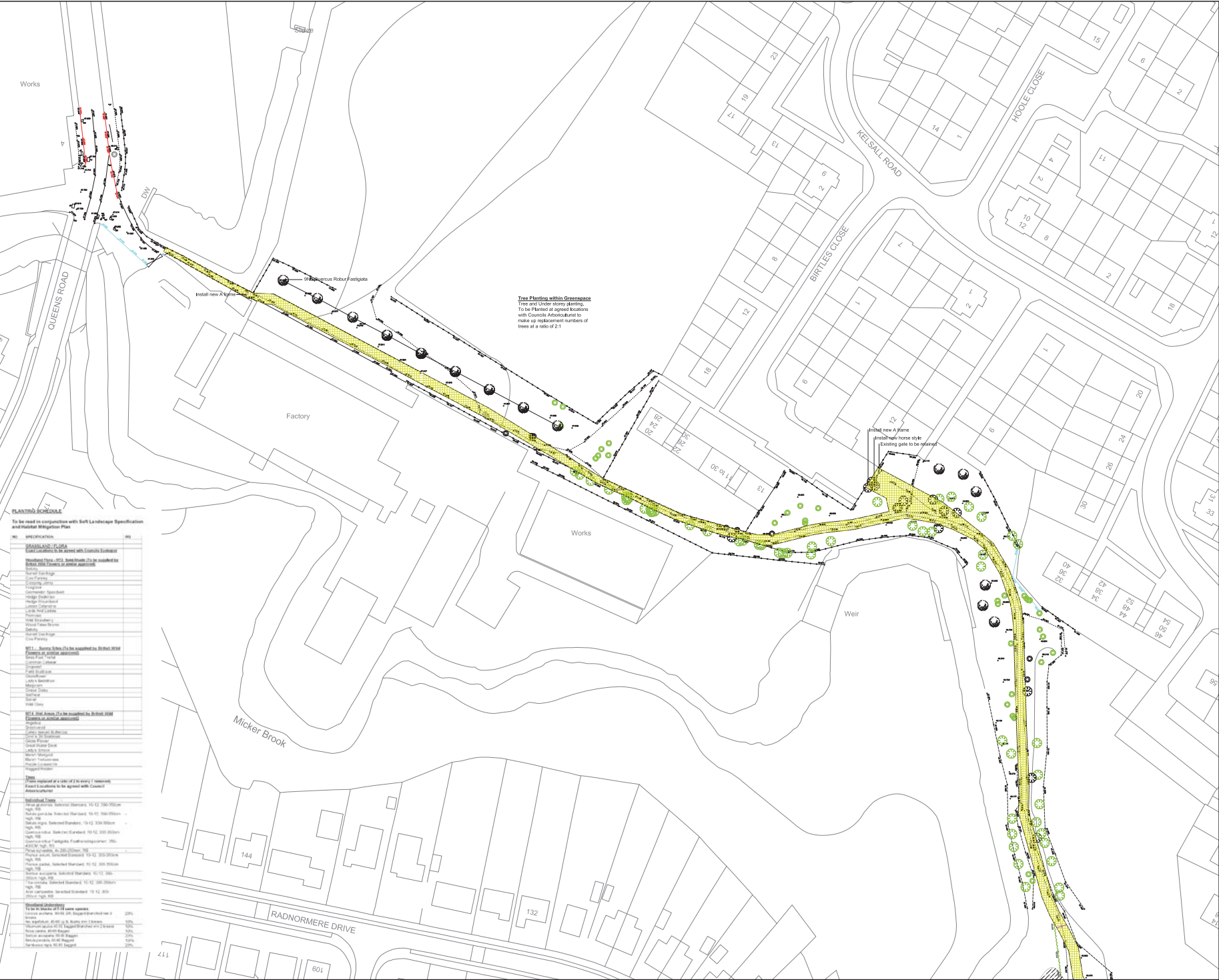
STOCKPORT
METROPOLITAN BOROUGH COUNCIL
STOCKPORT HOUSE
12-14 DE LA RUE PLACE
STOCKPORT, CHESHIRE SK7 6JF

Job Title
**CHEADLE HULME
CYCLE PACKAGE**

Drawing Title
**GENERAL ARRANGEMENT
SHEET 1 of 9**

Drawn	Engineer	Checked	Approved
ALB	ALB	BL	MJ
Date	Date	Date	Date
13/03/17	13/03/17	23/03/17	23/03/17
Size	Scale		
A1	1:500@A1		
SCD No.	Filename		

Drawing No. **0255_P_030** Revision **C**



PLANTING SCHEDULE

To be read in conjunction with the Landscape Specification and Habitat Mitigation Plan

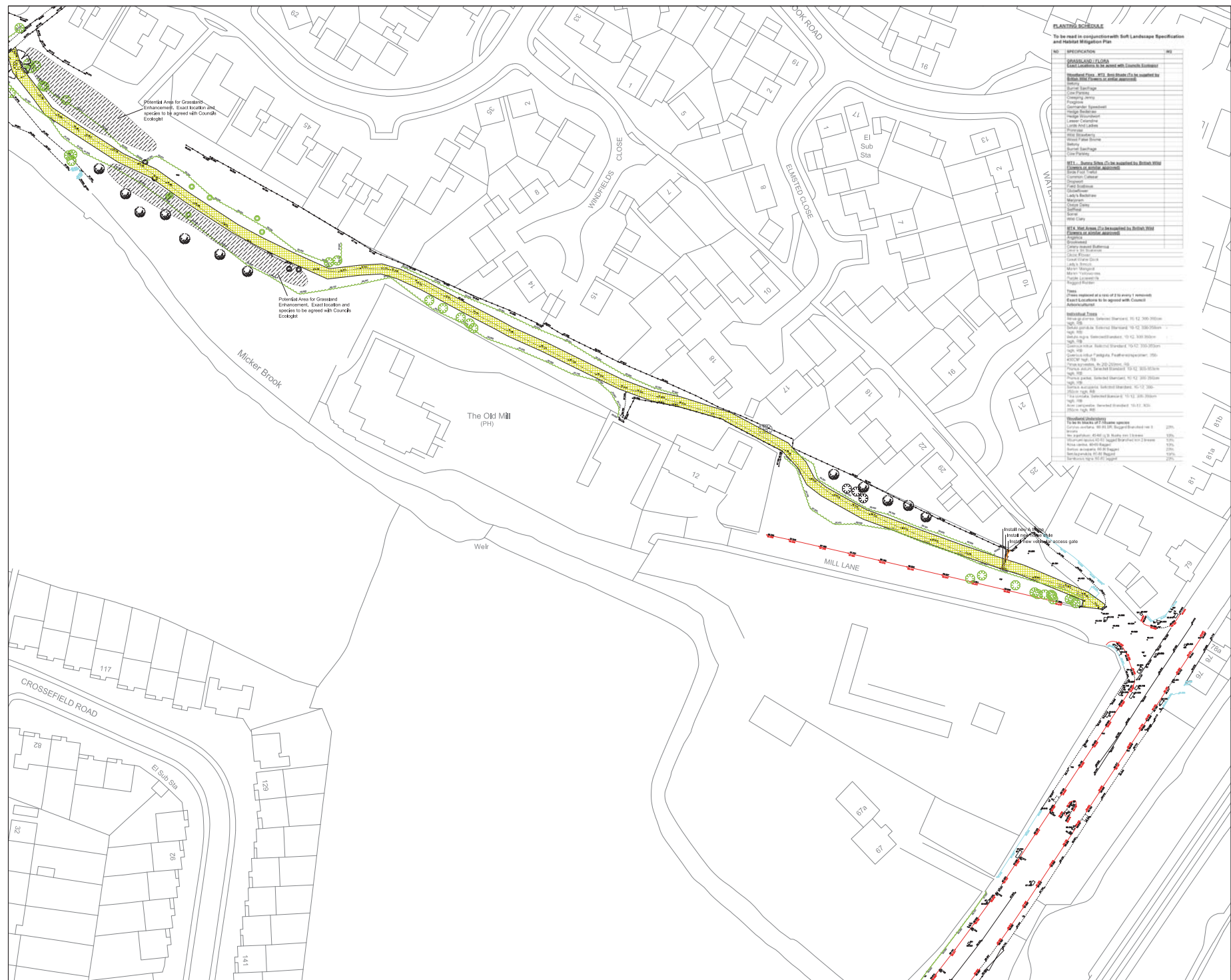
NO.	SPECIFICATION	NO.
WATERWAYS / DRAINAGE		
Cable Locations to be agreed with Councils Arboricultural		
Standard Pipe: 450mm dia. 150mm depth (To be installed by Councils Arboricultural at agreed locations)		
Notes:		
1. Cable Location		
2. Cable Depth		
3. Cable Material		
4. Cable Spacing		
5. Cable Protection		
6. Cable Installation		
7. Cable Maintenance		
8. Cable Replacement		
9. Cable Removal		
10. Cable Disposal		
11. Cable Storage		
12. Cable Transport		
13. Cable Handling		
14. Cable Lifting		
15. Cable Lowering		
16. Cable Tying		
17. Cable Untying		
18. Cable Cutting		
19. Cable Joining		
20. Cable Sealing		
21. Cable Painting		
22. Cable Marking		
23. Cable Labeling		
24. Cable Identification		
25. Cable Tracking		
26. Cable Mapping		
27. Cable Recording		
28. Cable Reporting		
29. Cable Review		
30. Cable Audit		
31. Cable Inspection		
32. Cable Monitoring		
33. Cable Assessment		
34. Cable Evaluation		
35. Cable Analysis		
36. Cable Synthesis		
37. Cable Interpretation		
38. Cable Communication		
39. Cable Collaboration		
40. Cable Coordination		
41. Cable Cooperation		
42. Cable Consensus		
43. Cable Consistency		
44. Cable Continuity		
45. Cable Coherence		
46. Cable Comprehensiveness		
47. Cable Completeness		
48. Cable Correctness		
49. Cable Accuracy		
50. Cable Precision		
51. Cable Reliability		
52. Cable Validity		
53. Cable Trustworthiness		
54. Cable Credibility		
55. Cable Reputability		
56. Cable Respectability		
57. Cable Dignity		
58. Cable Honor		
59. Cable Prestige		
60. Cable Status		
61. Cable Rank		
62. Cable Position		
63. Cable Level		
64. Cable Grade		
65. Cable Class		
66. Cable Order		
67. Cable Sequence		
68. Cable Series		
69. Cable Set		
70. Cable Group		
71. Cable Collection		
72. Cable Aggregate		
73. Cable Mass		
74. Cable Bulk		
75. Cable Volume		
76. Cable Quantity		
77. Cable Amount		
78. Cable Sum		
79. Cable Total		
80. Cable Grand Total		

This map is reproduced from Ordnance Survey material with the permission of Ordnance Survey on behalf of the Controller of Her Majesty's Stationary Office © Crown copyright. Unauthorised reproduction infringes Crown copyright and may lead to prosecution or civil proceedings. Stockport Metropolitan Borough Council 100019571 2016

Key

- Existing Tree
- Tree to be Removed
- Proposed Tree
- Proposed Woodland under storey Planting
- Proposed Ground Flora / Grassland
- Flexi-Pave Surfacing
- Flexi-Pave - Build Up Construction in Areas of Poor Drainage
- Flexi-Pave - Vehicular Construction
- Flexi-Pave - Build Up Construction (Areas Close to / adjacent to Japanese Knotweed)
- Bridleway Gate
- Access Gate
- Proposed Post and Rail Timber Fence
Refer to Dwg 0255_P_072
- Existing Fence to be Removed

PLANTING SCHEDULE		
To be read in conjunction with Soft Landscape Specification and Detailed Mitigation Plan		
NO.	SPECIFICATION	HT
OVERALL TOTAL PLANTING		
Landscaping to be agreed with Councils Ecologist		
Proposed Trees - HTL (see details to be provided by Ecologist / Arboriculturist)		
	Small Tree	10-12
	Small Tree	10-12
	Small Tree	10-12
	Small Tree	10-12
	Small Tree	10-12
	Small Tree	10-12
	Small Tree	10-12
	Small Tree	10-12
	Small Tree	10-12
	Small Tree	10-12
	Small Tree	10-12
	Small Tree	10-12
	Small Tree	10-12
	Small Tree	10-12
	Small Tree	10-12
	Small Tree	10-12
	Small Tree	10-12
	Small Tree	10-12
	Small Tree	10-12
	Small Tree	10-12
	Small Tree	10-12
	Small Tree	10-12
	Small Tree	10-12
	Small Tree	10-12
	Small Tree	10-12
	Small Tree	10-12
	Small Tree	10-12
	Small Tree	10-12
	Small Tree	10-12
	Small Tree	10-12
	Small Tree	10-12
	Small Tree	10-12
	Small Tree	10-12
	Small Tree	10-12
	Small Tree	10-12
	Small Tree	10-12
	Small Tree	10-12
	Small Tree	10-12
	Small Tree	10-12
	Small Tree	10-12
	Small Tree	10-12
	Small Tree	10-12
	Small Tree	10-12
	Small Tree	10-12
	Small Tree	10-12
	Small Tree	10-12
	Small Tree	10-12
	Small Tree	10-12
	Small Tree	10-12
	Small Tree	10-12
	Small Tree	10-12
	Small Tree	10-12
	Small Tree	10-12
	Small Tree	10-12
	Small Tree	10-12
	Small Tree	10-12
	Small Tree	10-12
	Small Tree	10-12
	Small Tree	10-12
	Small Tree	10-12
	Small Tree	10-12
	Small Tree	10-12
	Small Tree	10-12
	Small Tree	10-12
	Small Tree	10-12
	Small Tree	10-12
	Small Tree	10-12
	Small Tree	10-12
	Small Tree	10-12
	Small Tree	10-12
	Small Tree	10-12
	Small Tree	10-12
	Small Tree	10-12
	Small Tree	10-12
	Small Tree	10-12
	Small Tree	10-12
	Small Tree	10-12
	Small Tree	10-12
	Small Tree	10-12
	Small Tree	10-12
	Small Tree	10-12
	Small Tree	10-12
	Small Tree	10-12
	Small Tree	10-12
	Small Tree	10-12
	Small Tree	10-12
	Small Tree	10-12
	Small Tree	10-12
	Small Tree	10-12
	Small Tree	10-12
	Small Tree	10-12
	Small Tree	10-12
	Small Tree	10-12
	Small Tree	10-12
	Small Tree	10-12
	Small Tree	10-12
	Small Tree	10-12
	Small Tree	10-12
	Small Tree	10-12
	Small Tree	10-12
	Small Tree	10-12
	Small Tree	10-12
	Small Tree	10-12
	Small Tree	10-12
	Small Tree	10-12
	Small Tree	10-12
	Small Tree	10-12
	Small Tree	10-12
	Small Tree	10-12
	Small Tree	10-12
	Small Tree	10-12
	Small Tree	10-12
	Small Tree	10-12
	Small Tree	10-12
	Small Tree	10-12
	Small Tree	10-12
	Small Tree	10-12
	Small Tree	10-12
	Small Tree	10-12
	Small Tree	10-12
	Small Tree	10-12
	Small Tree	10-12
	Small Tree	10-12
	Small Tree	10-12
	Small Tree	10-12
	Small Tree	10-12
	Small Tree	10-12
	Small Tree	10-12
	Small Tree	10-12
	Small Tree	10-12
	Small Tree	10-12
	Small Tree	10-12
	Small Tree	10-12
	Small Tree	10-12
	Small Tree	10-12
	Small Tree	10-12
	Small Tree	10-12
	Small Tree	10-12
	Small Tree	10-12
	Small Tree	10-12
	Small Tree	10-12
	Small Tree	10-12
	Small Tree	10-12
	Small Tree	10-12
	Small Tree	10-12
	Small Tree	10-12
	Small Tree	10-12
	Small Tree	10-12
	Small Tree	10-12
	Small Tree	10-12
	Small Tree	10-12
	Small Tree	10-12
	Small Tree	10-12
	Small Tree	10-12
	Small Tree	10-12
	Small Tree	10-12
	Small Tree	10-12
	Small Tree	10-12
	Small Tree	10-12
	Small Tree	10-12
	Small Tree	10-12
	Small Tree	10-12
	Small Tree	10-12
	Small Tree	10-12
	Small Tree	10-12
	Small Tree	10-12
	Small Tree	10-12
	Small Tree	10-12
	Small Tree	10-12
	Small Tree	10-12
	Small Tree	10-12
	Small Tree	10-12
	Small Tree	10-12
	Small Tree	10-12
	Small Tree	10-12
	Small Tree	10-12
	Small Tree	10-12
	Small Tree	10-12
	Small Tree	10-12
	Small Tree	10-12
	Small Tree	10-12
	Small Tree	10-12
	Small Tree	10-12
	Small Tree	10-12
	Small Tree	10-12
	Small Tree	10-12
	Small Tree	10-12
	Small Tree	10-12
	Small Tree	10-12
	Small Tree	10-12
	Small Tree	10-12
	Small Tree	10-12
	Small Tree	10-12
	Small Tree	10-12
	Small Tree	10-12
	Small Tree	10-12
	Small Tree	10-12
	Small Tree	10-12
	Small Tree	10-12
	Small Tree	10-12
	Small Tree	10-12
	Small Tree	10-12
	Small Tree	10-12
	Small Tree	10-12
	Small Tree	10-12
	Small Tree	10-12
	Small Tree	10-12
	Small Tree	10-12
	Small Tree	10-12
	Small Tree	10-12
	Small Tree	10-12
	Small Tree	10-12
	Small Tree	10-12
	Small Tree	10-12
	Small Tree	10-12
	Small Tree	10-12
	Small Tree	10-12
	Small Tree	10-12
	Small Tree	10-12
	Small Tree	10-12
	Small Tree	10-12
	Small Tree	10-12
	Small Tree	10-12
	Small Tree	10-12
	Small Tree	10-12
	Small Tree	10-12
	Small Tree	10-12
	Small Tree	10-12
	Small Tree	10-12
	Small Tree	10-12
	Small Tree	10-12
	Small Tree	10-12
	Small Tree	10-12
	Small Tree	10-12
	Small Tree	10-12
	Small Tree	10-12
	Small Tree	10-12
	Small Tree	10-12
	Small Tree	10-12
	Small Tree	10-12
	Small Tree	10-12
	Small Tree	10-12
	Small Tree	10-12
	Small Tree	10-12
	Small Tree	10-12
	Small Tree	10-12
	Small Tree	10-12
	Small Tree	10-12
	Small Tree	10-12
	Small Tree	10-12
	Small Tree	10-12
	Small Tree	10-12
	Small Tree	10-12
	Small Tree	10-12
	Small Tree	10-12
	Small Tree	10-12
	Small Tree	10-12
	Small Tree	10-12
	Small Tree	10-12
	Small Tree	10-12
	Small Tree	10-12
	Small Tree	10-12
	Small Tree	10-12
	Small Tree	10-12
	Small Tree	10-12
	Small Tree	10-1



This map is reproduced from Ordnance Survey material with the permission of Ordnance Survey on behalf of the Controller of Her Majesty's Stationery Office © Crown copyright. Unauthorised reproduction infringes Crown copyright and may lead to prosecution or civil proceedings. Stockport Metropolitan Borough Council 100019571 2016

Key



Existing Tree



Tree to be Removed



Proposed Tree



Proposed Woodland Under storey Planting



Proposed Ground Flora / Grassland



Areas of Poor Drainage



B A	BL BL	AJB AJB	07/06/17 00/03/17	Omission of Yew and Basil from the plant schedule Amendment to key
--------	----------	------------	----------------------	---



STOCKPORT
METROPOLITAN BOROUGH COUNCIL
HIGHWAYS AND TRANSPORTATION
STOCKPORT STAFF HOUSE
STOCKPORT SK10 3JG
TEL 0161 474 2434

corporate director PLACE	corporate director PLACE
-----------------------------	-----------------------------

HEADLE HULME
CYCLE PACKAGE

Drawing Title

GENERAL ARRANGEMENT

SHEET 4 of 9

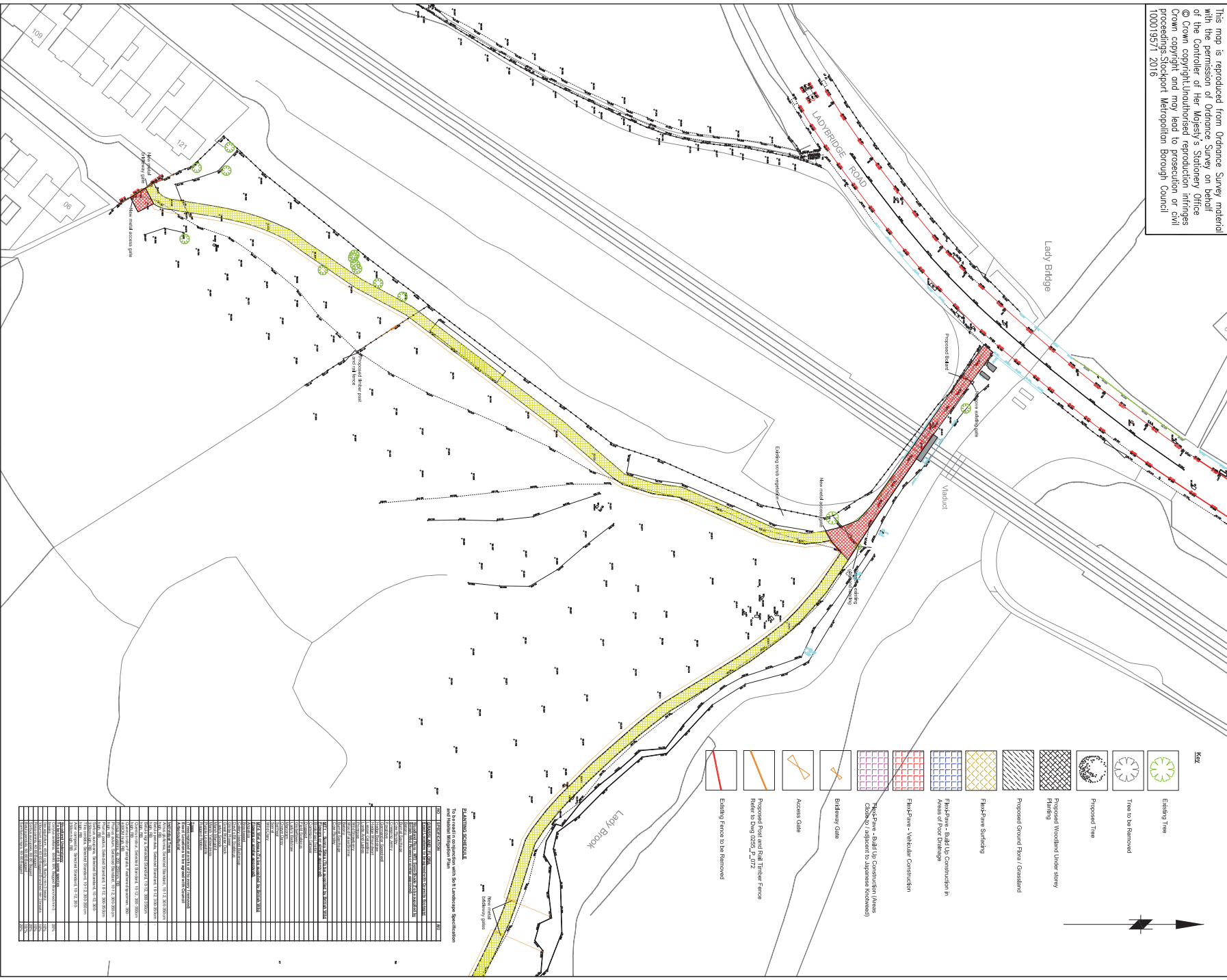
Drawn ALB	Engineer ALB	Checked BL	Approved MJ
Date 13/03/17	Date 13/03/17	Date 23/03/17	Date 23/03/17
Size A1	Scale 1:500@A1		
SCG No.	Filename		

500	1000	1500	2000	2500	3000	3500	4000	4500	5000	5500	6000	6500	7000	7500	8000	8500	9000	9500	10000
-----	------	------	------	------	------	------	------	------	------	------	------	------	------	------	------	------	------	------	-------


0255_P033

B

This map is reproduced from Ordnance Survey material with the permission of Ordnance Survey on behalf of the Controller of Her Majesty's Stationery Office. © Crown copyright/unauthorised reproduction infringes Crown copyright and may lead to prosecution or civil proceedings. Stockport Metropolitan Borough Council 100019571 2016



REVISIONS	
NO.	DESCRIPTION
1	Issue for approval
2	Issue for approval
3	Issue for approval
4	Issue for approval
5	Issue for approval
6	Issue for approval
7	Issue for approval
8	Issue for approval
9	Issue for approval
10	Issue for approval
11	Issue for approval
12	Issue for approval
13	Issue for approval
14	Issue for approval
15	Issue for approval
16	Issue for approval
17	Issue for approval
18	Issue for approval
19	Issue for approval
20	Issue for approval
21	Issue for approval
22	Issue for approval
23	Issue for approval
24	Issue for approval
25	Issue for approval
26	Issue for approval
27	Issue for approval
28	Issue for approval
29	Issue for approval
30	Issue for approval
31	Issue for approval
32	Issue for approval
33	Issue for approval
34	Issue for approval
35	Issue for approval
36	Issue for approval
37	Issue for approval
38	Issue for approval
39	Issue for approval
40	Issue for approval
41	Issue for approval
42	Issue for approval
43	Issue for approval
44	Issue for approval
45	Issue for approval
46	Issue for approval
47	Issue for approval
48	Issue for approval
49	Issue for approval
50	Issue for approval
51	Issue for approval
52	Issue for approval
53	Issue for approval
54	Issue for approval
55	Issue for approval
56	Issue for approval
57	Issue for approval
58	Issue for approval
59	Issue for approval
60	Issue for approval
61	Issue for approval
62	Issue for approval
63	Issue for approval
64	Issue for approval
65	Issue for approval
66	Issue for approval
67	Issue for approval
68	Issue for approval
69	Issue for approval
70	Issue for approval
71	Issue for approval
72	Issue for approval
73	Issue for approval
74	Issue for approval
75	Issue for approval
76	Issue for approval
77	Issue for approval
78	Issue for approval
79	Issue for approval
80	Issue for approval
81	Issue for approval
82	Issue for approval
83	Issue for approval
84	Issue for approval
85	Issue for approval
86	Issue for approval
87	Issue for approval
88	Issue for approval
89	Issue for approval
90	Issue for approval
91	Issue for approval
92	Issue for approval
93	Issue for approval
94	Issue for approval
95	Issue for approval
96	Issue for approval
97	Issue for approval
98	Issue for approval
99	Issue for approval
100	Issue for approval



STOCKPORT
METROPOLITAN BOROUGH COUNCIL

HOVINGS AND TRANSPORTATION
STOCKPORT
STOCKPORT SK1 3WE
Tel: 0161 474 2434

GENERAL ARRANGEMENT

CHHEADLE HULME CYCLE PACKAGE

DATE 13/03/17

SCALE 1:500@A1P

DRAWING NUMBER 0255_P034

REVISION B

DESIGNED BL

ENGINEER BL

CHECKED AB

APPROVED MJ

DATE 13/03/17

DATE 13/03/17

DATE 23/03/17

DATE 23/03/17



This map is reproduced from Ordnance Survey material with the permission of Ordnance Survey on behalf of the Controller of Her Majesty's Stationery Office
© Crown copyright. Unauthorised reproduction infringes Crown copyright and may lead to prosecution or civil proceedings. Stockport Metropolitan Borough Council
100019571 2016



Key



Existing Tree



Tree to be Removed



Proposed Tree



Proposed Woodland Understorey



Proposed Ground Flora / Grassland



Flexi-Pave Surfacing



Flex-Pave - Build Up Construction In



Flexi-Pave - Vehicular Construction



Flexi-Pave - Build Up Construction (Areas Close to / adjacent to Japanese Knotweed)



Bridleway Gate



Access Gate



Proposed Post and Rail Timber Fence
Refer to Draw 0255, P. 072



Existing Fence to be Removed

B	BL	AJB	07/06/17	Deletion of Yew and Bass from the plant schedule
A	BL	AJB	30/03/17	Amendment to key
Rev.	Drawn	Checked	Date	Revision Details

Item	Origin	Character	Use	Revision Details
AMENDMENTS				

CORPORATE DIRECTOR
PLACE

Job Title

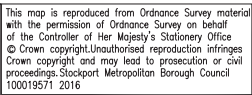
CHEADLE HULME
CYCLE PACKAGE

Drawing Title

GENERAL ARRANGEMENT

SHEET 6 of 9

Drawn BL	Engineer BL	Checked AB	Approved MJ
Date 13/03/17	Date 13/03/17	Date 23/03/17	Date 23/03/17
Size A1	Scale 1:500		
SCG No.	Filename		
Drawing No. 0255_P035			Revision B




Key



Existing Tree


Tree to be Removed

Proposed Tree

 Proposed Woodland Under storey Planting Proposed Ground Flora / Grassland Flexi-Pave Surfacing

Flexi-Pave - Build Up Construction in Areas of Poor Drainage

Flexi-Pave - Vehicular Construction



Flexi-Pave - Build Up Construction (Areas Close to / adjacent to Japanese Knotweed)



Existing Fence to be Removed



Rev.	Drawn	Checked	Date	Revision Details
AMENDMENTS				

AMENDMENTS



CHEADLE HULME
CYCLE PACKAGE

Drawing Title

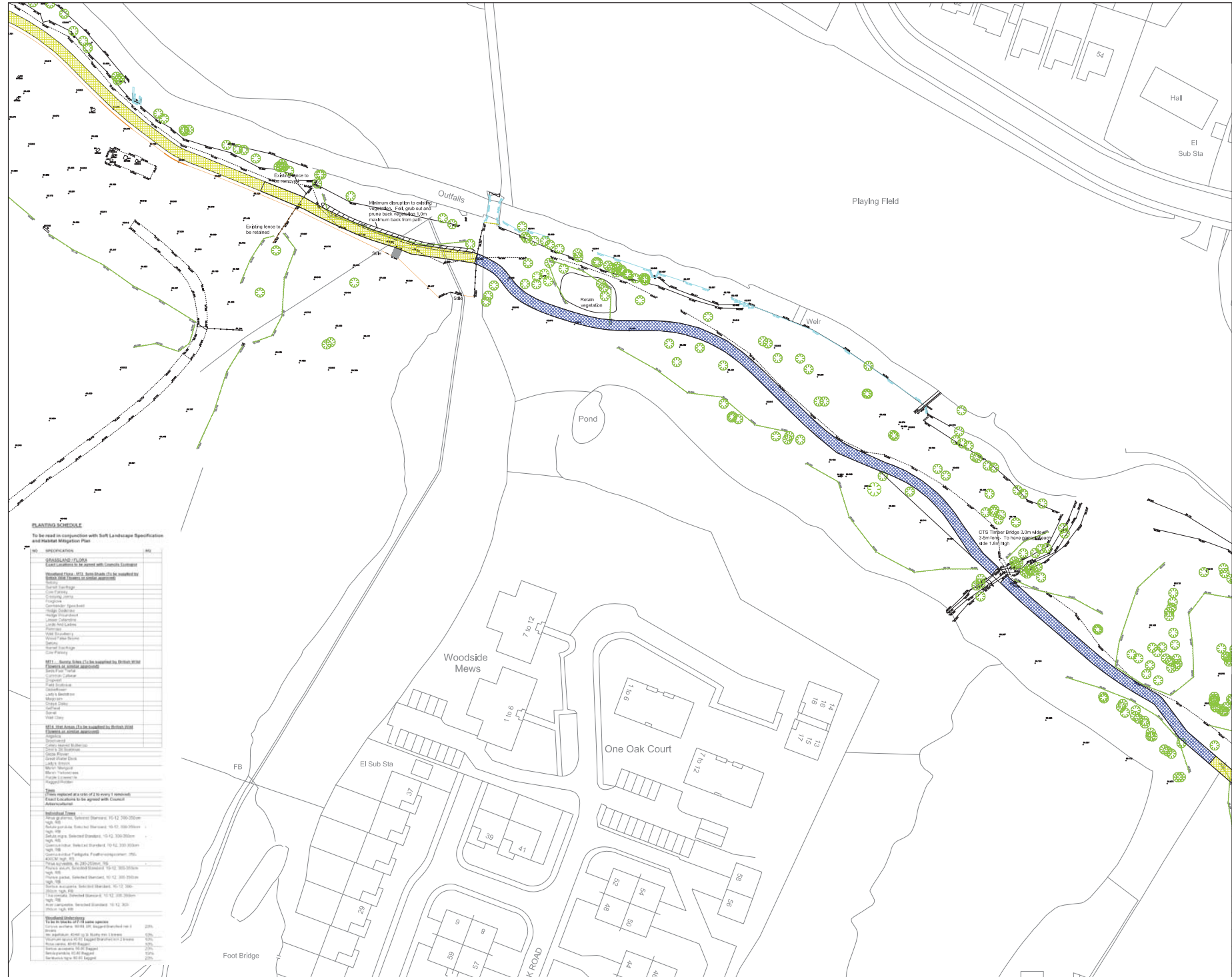
GENERAL ARRANGEMENT

SHEET 7 of 9

Drawn BL	Engineer BL	Checked AB	Approved MJ
Date 13/03/17	Date 13/03/17	Date 23/03/17	Date 23/03/17

A1	1:500 A1
SCG No.	Element

0255_P036

Revision
B

PLANTING SCHEDULE

To be read in conjunction with Soft Landscape Specification
and Habitat Mitigation Plan

[illegible]



PLANTING SCHEDULE		
To be read in conjunction with both Landscape Specification and Habitat Mitigation Plan		
NO	SPECIFICATION	Qty
EXISTING VEGETATION TO BE REMOVED		
1	Woodland Flora - 10% to be removed by 10/12/2025	
2	Ground Flora - 10% to be removed by 10/12/2025	
3	Grassland - 10% to be removed by 10/12/2025	
4	Grassland - 10% to be removed by 10/12/2025	
5	Grassland - 10% to be removed by 10/12/2025	
6	Grassland - 10% to be removed by 10/12/2025	
7	Grassland - 10% to be removed by 10/12/2025	
8	Grassland - 10% to be removed by 10/12/2025	
9	Grassland - 10% to be removed by 10/12/2025	
10	Grassland - 10% to be removed by 10/12/2025	
11	Grassland - 10% to be removed by 10/12/2025	
12	Grassland - 10% to be removed by 10/12/2025	
13	Grassland - 10% to be removed by 10/12/2025	
14	Grassland - 10% to be removed by 10/12/2025	
15	Grassland - 10% to be removed by 10/12/2025	
16	Grassland - 10% to be removed by 10/12/2025	
17	Grassland - 10% to be removed by 10/12/2025	
18	Grassland - 10% to be removed by 10/12/2025	
19	Grassland - 10% to be removed by 10/12/2025	
20	Grassland - 10% to be removed by 10/12/2025	
21	Grassland - 10% to be removed by 10/12/2025	
22	Grassland - 10% to be removed by 10/12/2025	
23	Grassland - 10% to be removed by 10/12/2025	
24	Grassland - 10% to be removed by 10/12/2025	
25	Grassland - 10% to be removed by 10/12/2025	
26	Grassland - 10% to be removed by 10/12/2025	
27	Grassland - 10% to be removed by 10/12/2025	
28	Grassland - 10% to be removed by 10/12/2025	
29	Grassland - 10% to be removed by 10/12/2025	
30	Grassland - 10% to be removed by 10/12/2025	
31	Grassland - 10% to be removed by 10/12/2025	
32	Grassland - 10% to be removed by 10/12/2025	
33	Grassland - 10% to be removed by 10/12/2025	
34	Grassland - 10% to be removed by 10/12/2025	
35	Grassland - 10% to be removed by 10/12/2025	
36	Grassland - 10% to be removed by 10/12/2025	
37	Grassland - 10% to be removed by 10/12/2025	
38	Grassland - 10% to be removed by 10/12/2025	
39	Grassland - 10% to be removed by 10/12/2025	
40	Grassland - 10% to be removed by 10/12/2025	
41	Grassland - 10% to be removed by 10/12/2025	
42	Grassland - 10% to be removed by 10/12/2025	
43	Grassland - 10% to be removed by 10/12/2025	
44	Grassland - 10% to be removed by 10/12/2025	
45	Grassland - 10% to be removed by 10/12/2025	
46	Grassland - 10% to be removed by 10/12/2025	
47	Grassland - 10% to be removed by 10/12/2025	
48	Grassland - 10% to be removed by 10/12/2025	
49	Grassland - 10% to be removed by 10/12/2025	
50	Grassland - 10% to be removed by 10/12/2025	
51	Grassland - 10% to be removed by 10/12/2025	
52	Grassland - 10% to be removed by 10/12/2025	
53	Grassland - 10% to be removed by 10/12/2025	
54	Grassland - 10% to be removed by 10/12/2025	
55	Grassland - 10% to be removed by 10/12/2025	
56	Grassland - 10% to be removed by 10/12/2025	
57	Grassland - 10% to be removed by 10/12/2025	
58	Grassland - 10% to be removed by 10/12/2025	
59	Grassland - 10% to be removed by 10/12/2025	
60	Grassland - 10% to be removed by 10/12/2025	
61	Grassland - 10% to be removed by 10/12/2025	
62	Grassland - 10% to be removed by 10/12/2025	
63	Grassland - 10% to be removed by 10/12/2025	
64	Grassland - 10% to be removed by 10/12/2025	
65	Grassland - 10% to be removed by 10/12/2025	
66	Grassland - 10% to be removed by 10/12/2025	
67	Grassland - 10% to be removed by 10/12/2025	
68	Grassland - 10% to be removed by 10/12/2025	
69	Grassland - 10% to be removed by 10/12/2025	
70	Grassland - 10% to be removed by 10/12/2025	
71	Grassland - 10% to be removed by 10/12/2025	
72	Grassland - 10% to be removed by 10/12/2025	
73	Grassland - 10% to be removed by 10/12/2025	
74	Grassland - 10% to be removed by 10/12/2025	
75	Grassland - 10% to be removed by 10/12/2025	
76	Grassland - 10% to be removed by 10/12/2025	
77	Grassland - 10% to be removed by 10/12/2025	
78	Grassland - 10% to be removed by 10/12/2025	
79	Grassland - 10% to be removed by 10/12/2025	
80	Grassland - 10% to be removed by 10/12/2025	
81	Grassland - 10% to be removed by 10/12/2025	
82	Grassland - 10% to be removed by 10/12/2025	
83	Grassland - 10% to be removed by 10/12/2025	
84	Grassland - 10% to be removed by 10/12/2025	
85	Grassland - 10% to be removed by 10/12/2025	
86	Grassland - 10% to be removed by 10/12/2025	
87	Grassland - 10% to be removed by 10/12/2025	
88	Grassland - 10% to be removed by 10/12/2025	
89	Grassland - 10% to be removed by 10/12/2025	
90	Grassland - 10% to be removed by 10/12/2025	
91	Grassland - 10% to be removed by 10/12/2025	
92	Grassland - 10% to be removed by 10/12/2025	
93	Grassland - 10% to be removed by 10/12/2025	
94	Grassland - 10% to be removed by 10/12/2025	
95	Grassland - 10% to be removed by 10/12/2025	
96	Grassland - 10% to be removed by 10/12/2025	
97	Grassland - 10% to be removed by 10/12/2025	
98	Grassland - 10% to be removed by 10/12/2025	
99	Grassland - 10% to be removed by 10/12/2025	
100	Grassland - 10% to be removed by 10/12/2025	

This map is reproduced from Ordnance Survey material with the permission of Ordnance Survey on behalf of the Controller of Her Majesty's Stationary Office. © Crown copyright. Unauthorised reproduction infringes Crown copyright and may lead to prosecution or civil proceedings. Stockport Metropolitan Borough Council 100019571 2016

Key

- Existing Tree
- Tree to be Removed
- Proposed Tree
- Proposed Woodland under storey Planting
- Proposed Ground Flora / Grassland
- Flexi-Pave Surfacing
- Flexi-Pave - Build Up Construction in Areas of Poor Drainage
- Flexi-Pave - Vehicular Construction
- Flexi-Pave - Build Up Construction (Areas Close to / adjacent to Japanese Knotweed)
- Bideway Gate
- Access Gate
- Proposed Post and Rail Timber Fence Refer to Dwg 0255_P_072
- Existing Fence to be Removed

B	BL	AJB	13/03/17	Creation of New and Build from the plant schedule
A	BL	AJB	13/03/17	Amendment to key
Rev.	Drawn	Checked	Date	Revision Details

AMENDMENTS

STOCKPORT
METROPOLITAN BOROUGH COUNCIL
ROADS AND TRANSPORTATION
COUNCIL OFFICE
100019571 2016

Job Title

A
CYCLE PACKAGE

Drawing Title

GENERAL ARRANGEMENT
SHEET 8 of 9

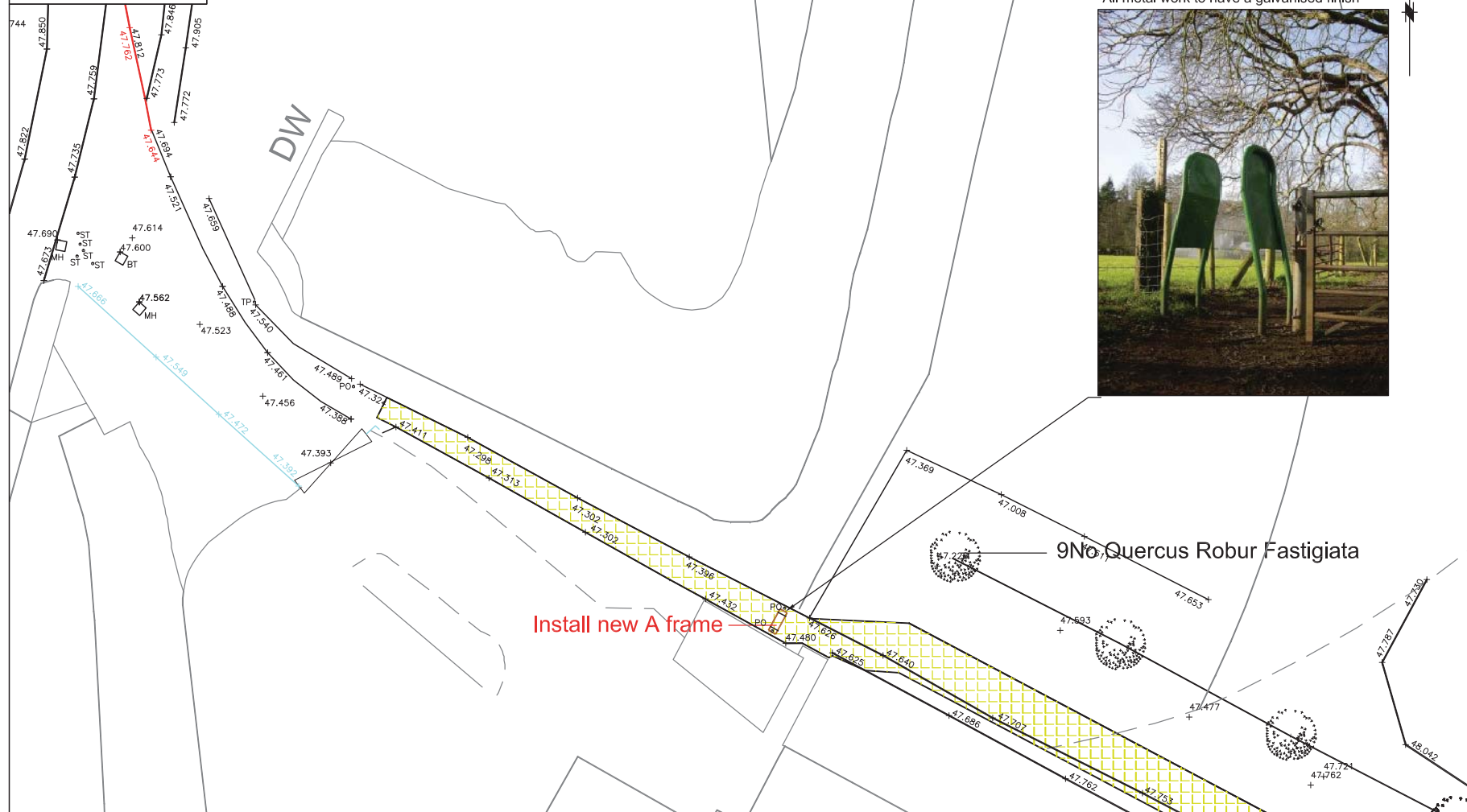
Drawn	Engineer	Checked	Approved
BL	BL	AB	B
Date	Date	Date	Date
13/03/17	13/03/17	23/03/17	23/03/17
Size	Scale	Scale	Scale
A1	1:500	A1	A1
SCS No.	Filename		
Drawing No.			Revision
0255_P037			B

This map is reproduced from Ordnance Survey material with the permission of Ordnance Survey on behalf of the Controller of Her Majesty's Stationery Office
© Crown copyright. Unauthorised reproduction infringes Crown copyright and may lead to prosecution or civil proceedings. Stockport Metropolitan Borough Council



Q1	Q2	Q3	Q4
1	2	3	4
5	6	7	8
9	10	11	12
13	14	15	16
17	18	19	20
21	22	23	24
25	26	27	28
29	30	31	32
33	34	35	36
37	38	39	40
41	42	43	44
45	46	47	48
49	50	51	52
53	54	55	56
57	58	59	60
61	62	63	64
65	66	67	68
69	70	71	72
73	74	75	76
77	78	79	80
81	82	83	84
85	86	87	88
89	90	91	92
93	94	95	96
97	98	99	100
101	102	103	104
105	106	107	108
109	110	111	112
113	114	115	116
117	118	119	120
121	122	123	124
125	126	127	128
129	130	131	132
133	134	135	136
137	138	139	140
141	142	143	144
145	146	147	148
149	150	151	152
153	154	155	156
157	158	159	160
161	162	163	164
165	166	167	168
169	170	171	172
173	174	175	176
177	178	179	180
181	182	183	184
185	186	187	188
189	190	191	192
193	194	195	196
197	198	199	200
201	202	203	204
205	206	207	208
209	210	211	212
213	214	215	216
217	218	219	220
221	222	223	224
225	226	227	228
229	230	231	232
233	234	235	236
237	238	239	240
241	242	243	244
245	246	247	248
249	250	251	252
253	254	255	256
257	258	259	260
261	262	263	264
265	266	267	268
269	270	271	272
273	274	275	276
277	278	279	280
281	282	283	284
285	286	287	288
289	290	291	292
293	294	295	296
297	298	299	300
301	302	303	304
305	306	307	308
309	310	311	312
313	314	315	316
317	318	319	320
321	322	323	324
325	326	327	328
329	330	331	332
333	334	335	336
337	338	339	340
341	342	343	344
345	346	347	348
349	350	351	352
353	354	355	356
357	358	359	360
361	362	363	364
365	366	367	368
369	370	371	372
373	374	375	376
377	378	379	380
381	382	383	384
385	386	387	388
389	390	391	392
393	394	395	396
397	398	399	400
401	402	403	404
405	406	407	408
409	410	411	412
413	414	415	416
417	418	419	420
421	422	423	424
425	426	427	428
429	430	431	432
433	434	435	436
437	438	439	440
441	442	443	444
445	446	447	448
449	450	451	452
453	454	455	456
457	458	459	460
461	462	463	464
465	466	467	468
469	470	471	472
473	474	475	476
477	478	479	480
481	482	483	484
485	486	487	488
489	490	491	492
493	494	495	496
497	498	499	500
501	502	503	504
505	506	507	508
509	510	511	512
513	514	515	516
517	518	519	520
521	522	523	524
525	526	527	528
529	530	531	532
533	534	535	536
537	538	539	540
541	542	543	544
545	546	547	548
549	550	551	552
553	554	555	556
557	558	559	560
561	562	563	564
565	566	567	568
569	570	571	572
573	574	575	576
577	578	579	580
581	582	583	584
585	586	587	588
589	590	591	592
593	594	595	596
597	598	599	600
601	602	603	604
605	606	607	608
609	610	611	612
613	614	615	616
617	618	619	620
621	622	623	624
625	626	627	628
629	630	631	632
633	634	635	636
637	638	639	640
641	642	643	644
645	646	647	648
649	650	651	652
653	654	655	656
657	658	659	660
661	662	663	664
665	666	667	668
669	670	671	672
673	674	675	676
677	678	679	680
681	682	683	684
685	686	687	688
689	690	691	692
693	694	695	696
697	698	699	700
701	702	703	704
705	706	707	708
709	710	711	712
713	714	715	716
717	718	719	720
721	722	723	724
725	726	727	728
729	730	731	732
733	734	735	736
737	738	739	740
741	742	743	744
745	746	747	748
749	750	751	752
753	754	755	756
757	758	759	760
761	762	763	764
765	766	767	768
769	770	771	772
773	774	775	776
777	778	779	780
781	782	783	784
785	786	787	788
789	790	791	792
793	794	795	796
797	798	799	800
801	802	803	804
805	806	807	808
809	810	811	812
813	814	815	816
817	818	819	820
821	822	823	824
825	826	827	828
829	830	831	832
833	834	835	836
837	838	839	840
841	842	843	844
845	846	847	848
849	850	851	852
853	854	855	856
857	858	859	860
861	862	863	864
865	866	867	868
869	870	871	872
873	874	875	876
877	878	879	880
881	882	883	884
885	886	887	888
889	890	891	892
893	894	895	896
897	898	899	900
901	902	903	904
905	906	907	908
909	910	911	912
913	914	915	916
917	918	919	920
921	922	923	924
925	926	927	928
929	930	931	932
933	934	935	936
937	938	939	940
941	942	943	944
945	946	947	948
949	950	951	952
953	954	955	956
957	958	959	960
961	962	963	964
965	966	967	968
969	970	971	972
973	974	975	976
977	978	979	980
981	982	983	984
985	986	987	988
989	990	991	992
993	994	995	996
997	998	999	1000

This map is reproduced from Ordnance Survey material with the permission of Ordnance Survey on behalf of the Controller of Her Majesty's Stationary Office. © Crown copyright. Unauthorised reproduction infringes Crown copyright and may lead to prosecution or civil proceedings. Stockport Metropolitan Borough Council 100019571 2016



Proposed Metal 'A' Frame

All metal work to have a galvanised finish



Install new A frame

9 No Quercus Robur Fastigiata

SCG JOB No.



STOCKPORT
METROPOLITAN BOROUGH COUNCIL

STOPFORD HOUSE
STOCKPORT SK1 3XE
Tel : 0161 474

CAROLINE SIMPSON
CORPORATE DIRECTOR
PLACE

AMENDMENTS

DRAWN	CHECKED	DATE	No	AMENDMENT

JOB TITLE

CHEADLE HULME CYCLE PACKAGE

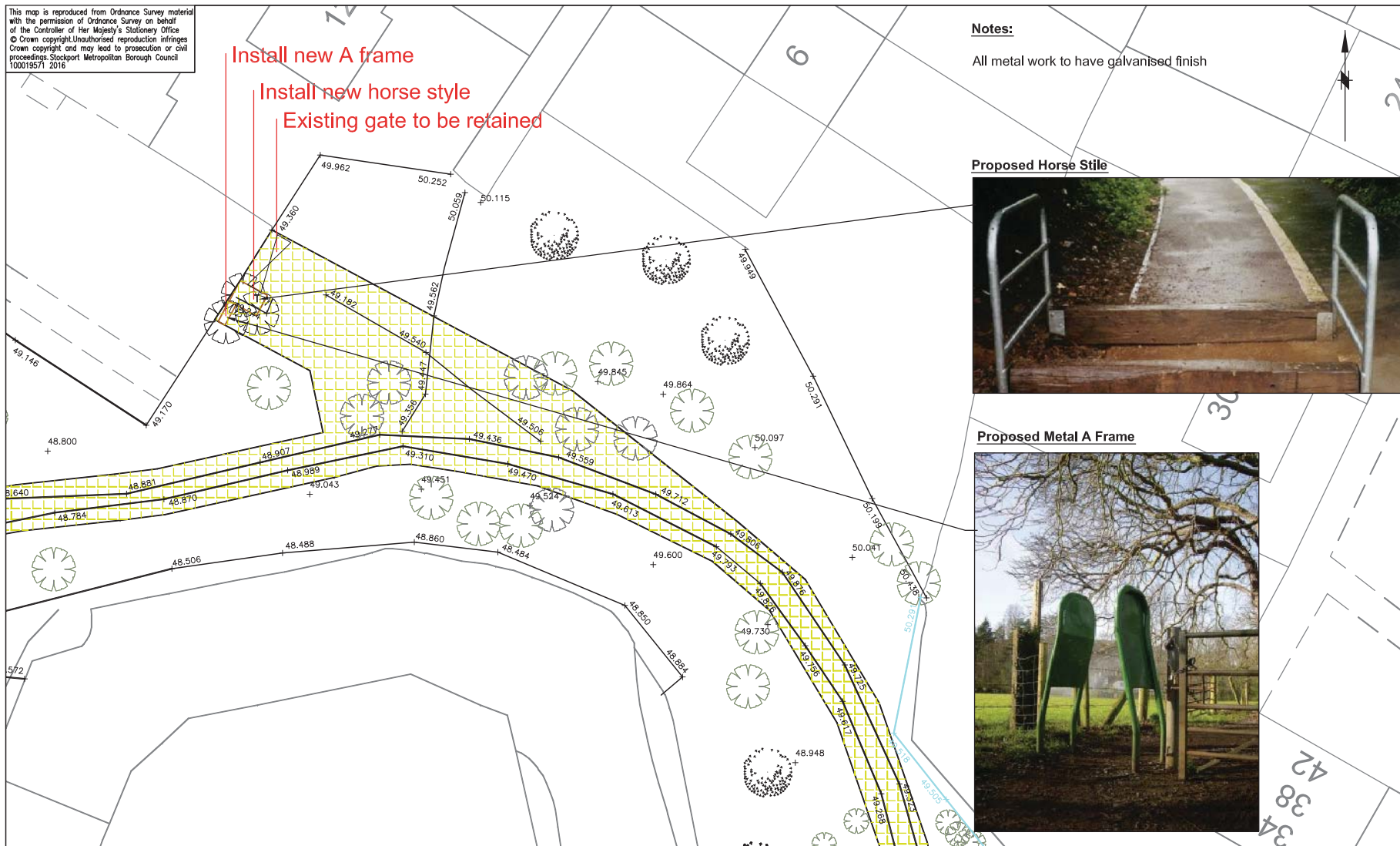
DRAWING TITLE

Detail Access Arrangement - Queens Road

Filename

Drawn BL	Engineer ALB	Checked ALB	Approved MDJ
Date 21/03/2017	Date 21/03/2017	Date 30/03/17	Date 30/03/17
Scale 1:250@A3			
Drawing No. 0255_P_041			Revision

This map is reproduced from Ordnance Survey material with the permission of Ordnance Survey on behalf of the Controller of Her Majesty's Stationary Office. © Crown copyright. Unauthorised reproduction infringes Crown copyright and may lead to prosecution or civil proceedings. Stockport Metropolitan Borough Council 100019571 2016



Notes:

All metal work to have galvanised finish

Proposed Horse Style



Proposed Metal A Frame



SCG JOB No.



STOCKPORT
METROPOLITAN BOROUGH COUNCIL

CAROLINE SIMPSON
CORPORATE DIRECTOR
PLACE

STOPFORD HOUSE
STOCKPORT SK1 3XE
Tel : 0161 474

AMENDMENTS

DRAWN	CHECKED	DATE	No	AMENDMENT

JOB TITLE

CHEADLE HULME CYCLE PACKAGE

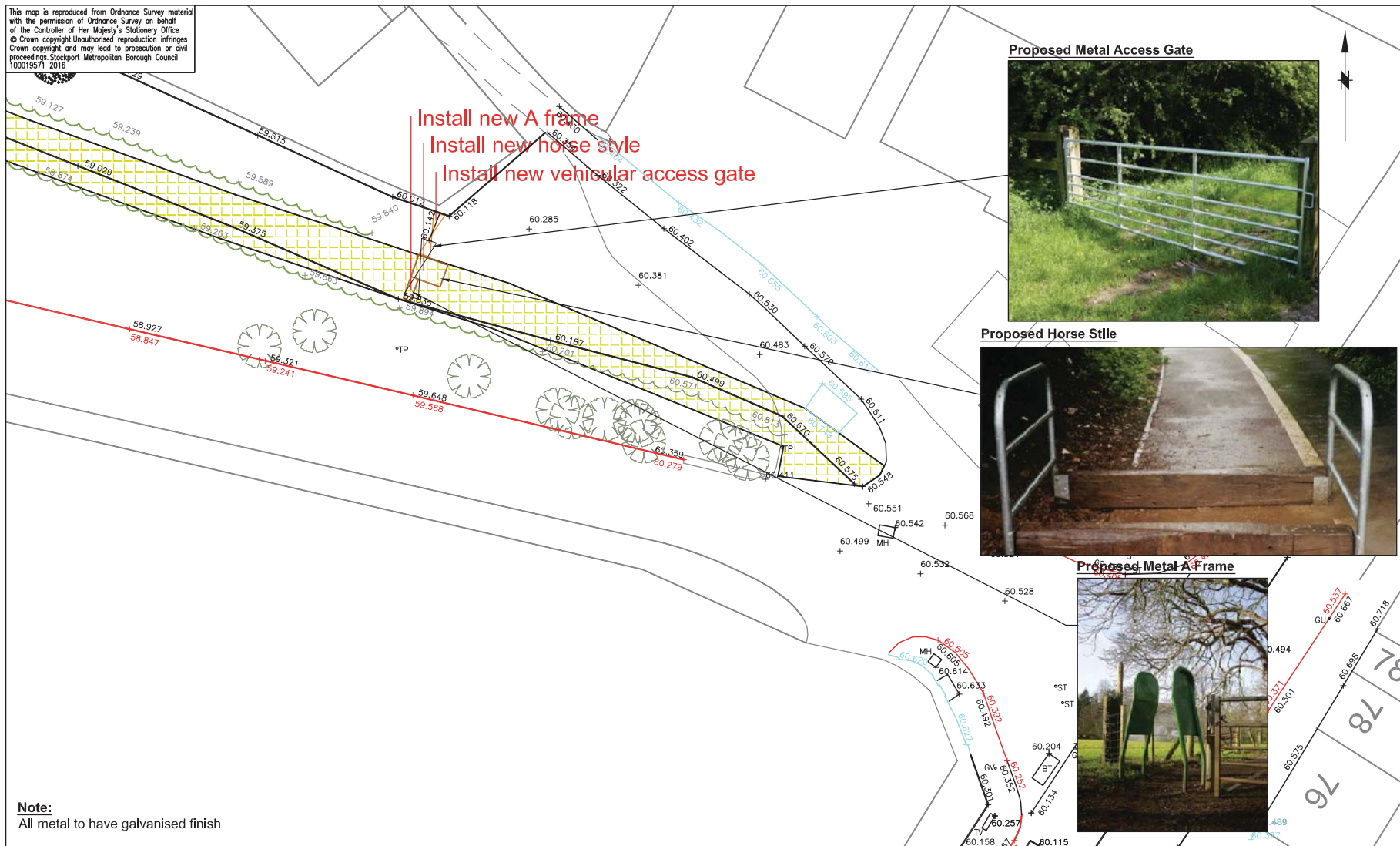
DRAWING TITLE

Detail Access Arrangement - Birtells Close

Filename

Drawn ALB	Engineer BL	Checked ALB	Approved MDJ
Date 21/03/2017	Date 21/03/2017	Date 30/03/2017	Date 30/03/2017
Scale 1:250@A3			
Drawing No. 0255_P_042			Revision

This map is reproduced from Ordnance Survey material with the permission of Ordnance Survey on behalf of the Controller of Her Majesty's Stationary Office
 © Crown copyright. Unauthorised reproduction infringes Crown copyright and may lead to prosecution or civil proceedings. Stockport Metropolitan Borough Council 10001957/1 2016



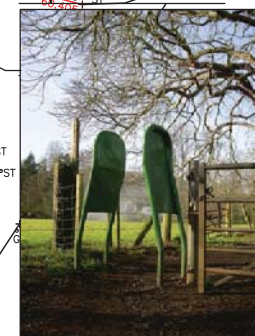
Proposed Metal Access Gate



Proposed Horse Stile



Proposed Metal A Frame



Note:
 All metal to have galvanised finish

SCG JOB No.



STOCKPORT
 METROPOLITAN BOROUGH COUNCIL

STOPFORD HOUSE
 STOCKPORT SK1 3XE
 Tel : 0161 474 4424

CAROLINE SIMPSON
 CORPORATE DIRECTOR
 PLACE

AMENDMENTS

DRAWN	CHECKED	DATE	No	AMENDMENT

JOB TITLE

CHEADLE HULME CYCLE PACKAGE

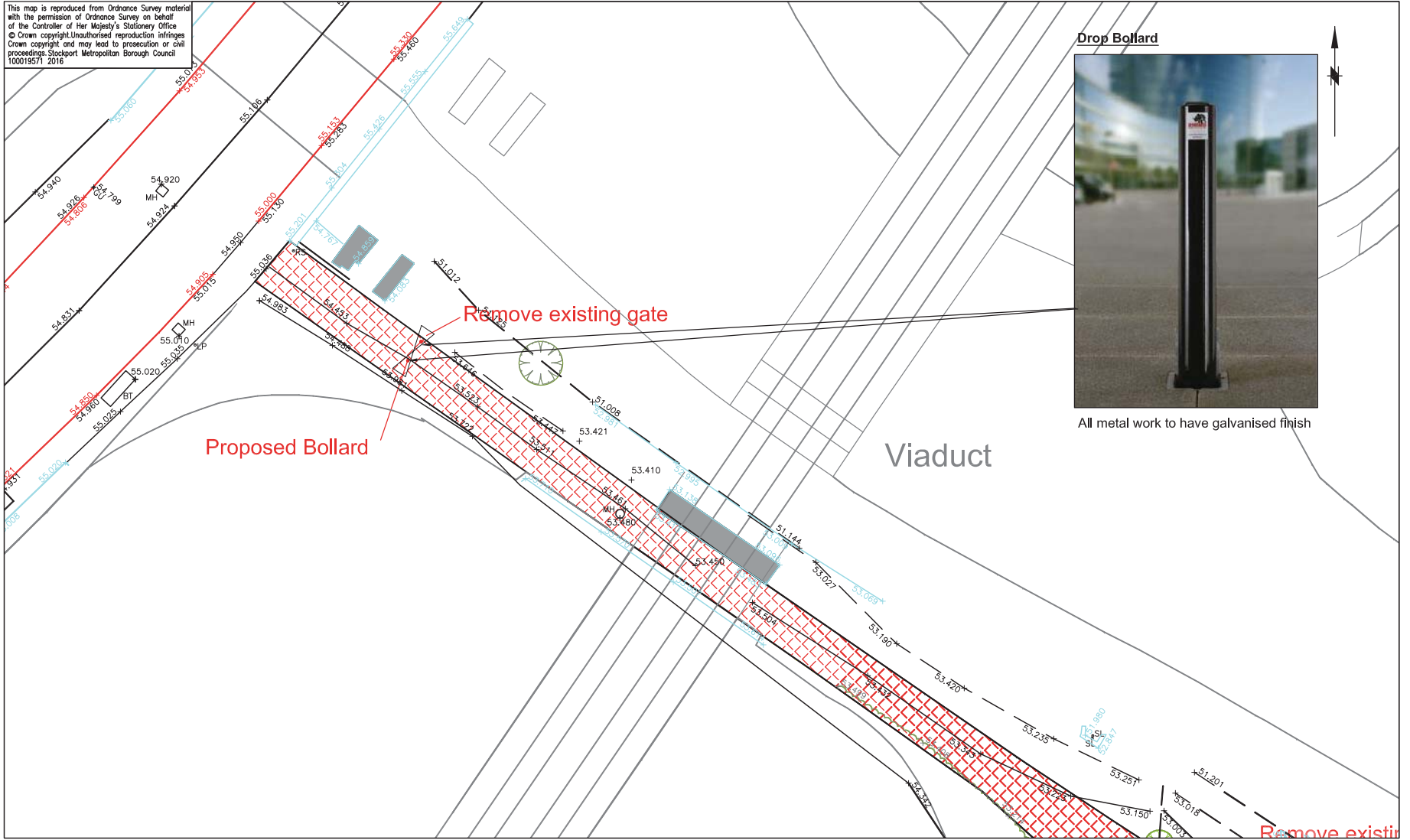
DRAWING TITLE

Detail Access Arrangement - Lady Bridge Road West

Filename

Drawn BL	Engineer BL	Checked ALB	Approved MDJ
Date 21/03/2017	Date 21/03/2017	Date 30/03/2017	Date 30/03/2017
Scale 1:250@A3			
Drawing No. 0255_P_043			Revision

This map is reproduced from Ordnance Survey material with the permission of Ordnance Survey on behalf of the Controller of Her Majesty's Stationary Office. © Crown copyright. Unauthorised reproduction infringes Crown copyright and may lead to prosecution or civil proceedings. Stockport Metropolitan Borough Council 100019571 2016



SCG JOB No.



STOCKPORT
METROPOLITAN BOROUGH COUNCIL

STOPFORD HOUSE
STOCKPORT SK1 3XE
Tel : 0161 474

CAROLINE SIMPSON
CORPORATE DIRECTOR
PLACE

AMENDMENTS

DRAWN	CHECKED	DATE	No	AMENDMENT

JOB TITLE

CHEADLE HULME CYCLE PACKAGE

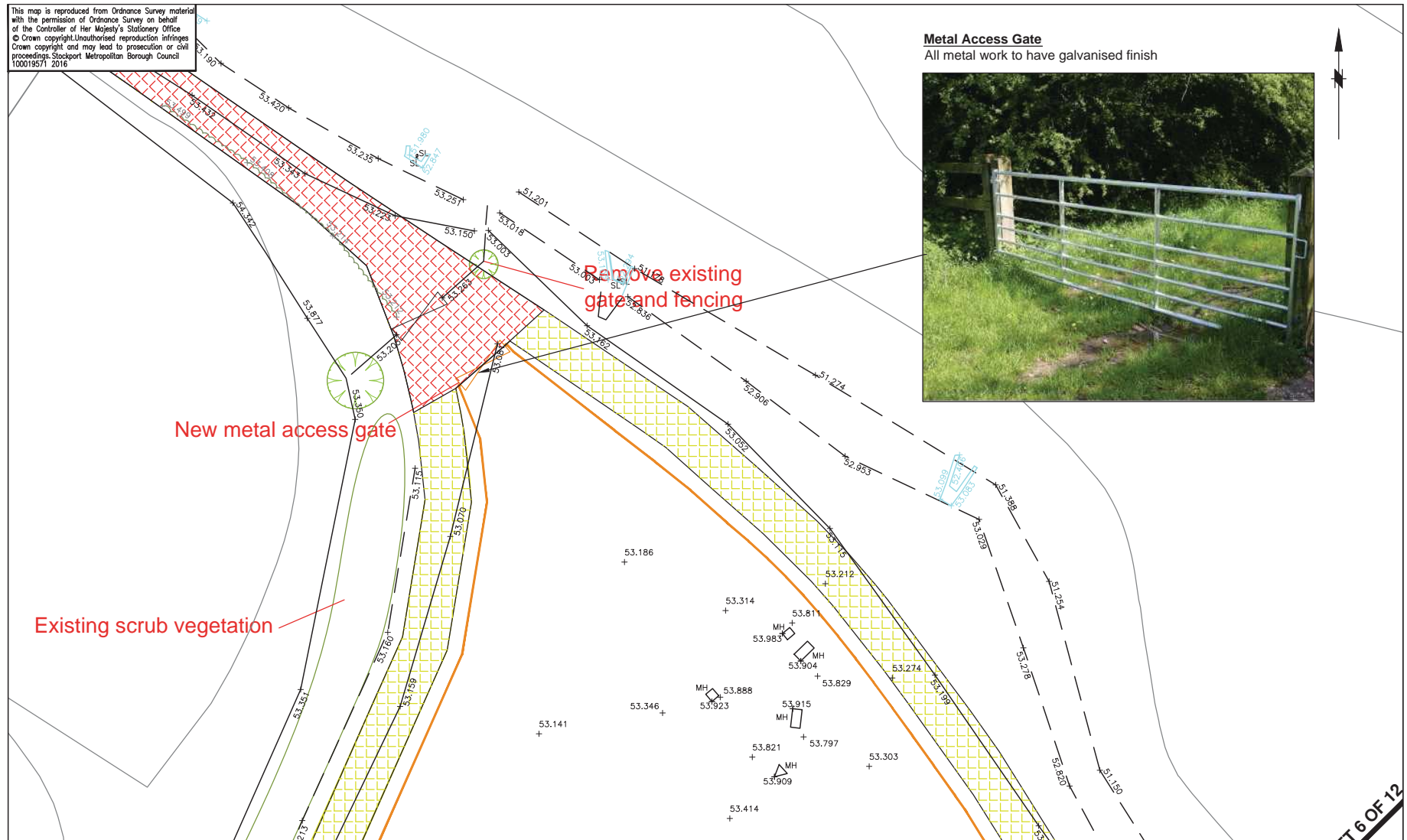
DRAWING TITLE

Detail Access Arrangement - Lady Bridge Road East

Filename

Drawn	Engineer	Checked	Approved
BL	BL	ALB	MDJ
Date	Date	Date	Date
21/03/2017	21/03/2017	30/03/2017	30/03/2017
Scale			
1:250@A3			
Drawing No.			Revision
0255_P_044			

This map is reproduced from Ordnance Survey material with the permission of Ordnance Survey on behalf of the Controller of Her Majesty's Stationary Office
 © Crown copyright. Unauthorised reproduction infringes Crown copyright and may lead to prosecution or civil proceedings. Stockport Metropolitan Borough Council
 1000195/1 2016



STOCKPORT
 METROPOLITAN BOROUGH COUNCIL

STOPFORD HOUSE
 STOCKPORT SK1 3XE
 Tel : 0161 474

CAROLINE SIMPSON
 CORPORATE DIRECTOR
 PLACE

AMENDMENTS

DRAWN	CHECKED	DATE	No	AMENDMENT

JOB TITLE

CHEADLE HULME CYCLE PACKAGE

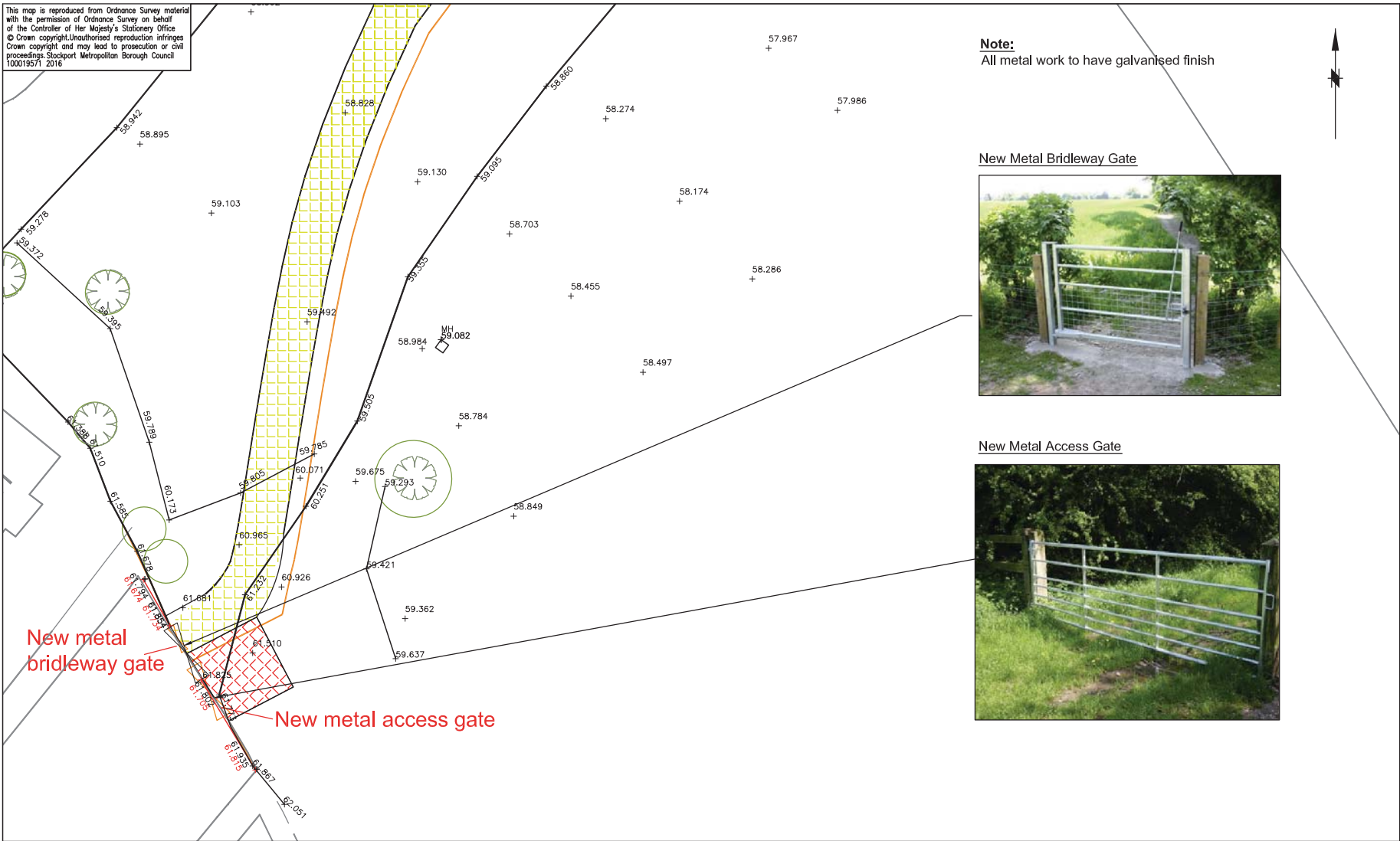
DRAWING TITLE

Detail Access Arrangement - Viaduct Access Works

Filename

Drawn ALB	Engineer ALB	Checked BL	Approved MJ
Date 10/04/2017	Date 10/04/2017	Date 10/04/2017	Date 10/04/2017
Scale 1:250@A3			
Drawing No. 0255_P_045			Revision

This map is reproduced from Ordnance Survey material with the permission of Ordnance Survey on behalf of the Controller of Her Majesty's Stationery Office
© Crown copyright. Unauthorised reproduction infringes Crown copyright and may lead to prosecution or civil proceedings. Stockport Metropolitan Borough Council
100019571 2016



Note:
All metal work to have galvanised finish

New Metal Bridleway Gate



New Metal Access Gate



SCG JOB No.



STOCKPORT
METROPOLITAN BOROUGH COUNCIL

STOPFORD HOUSE
STOCKPORT SK1 3XE
Tel : 0161 474 4424

AMENDMENTS				
DRAWN	CHECKED	DATE	No	AMENDMENT

JOB TITLE

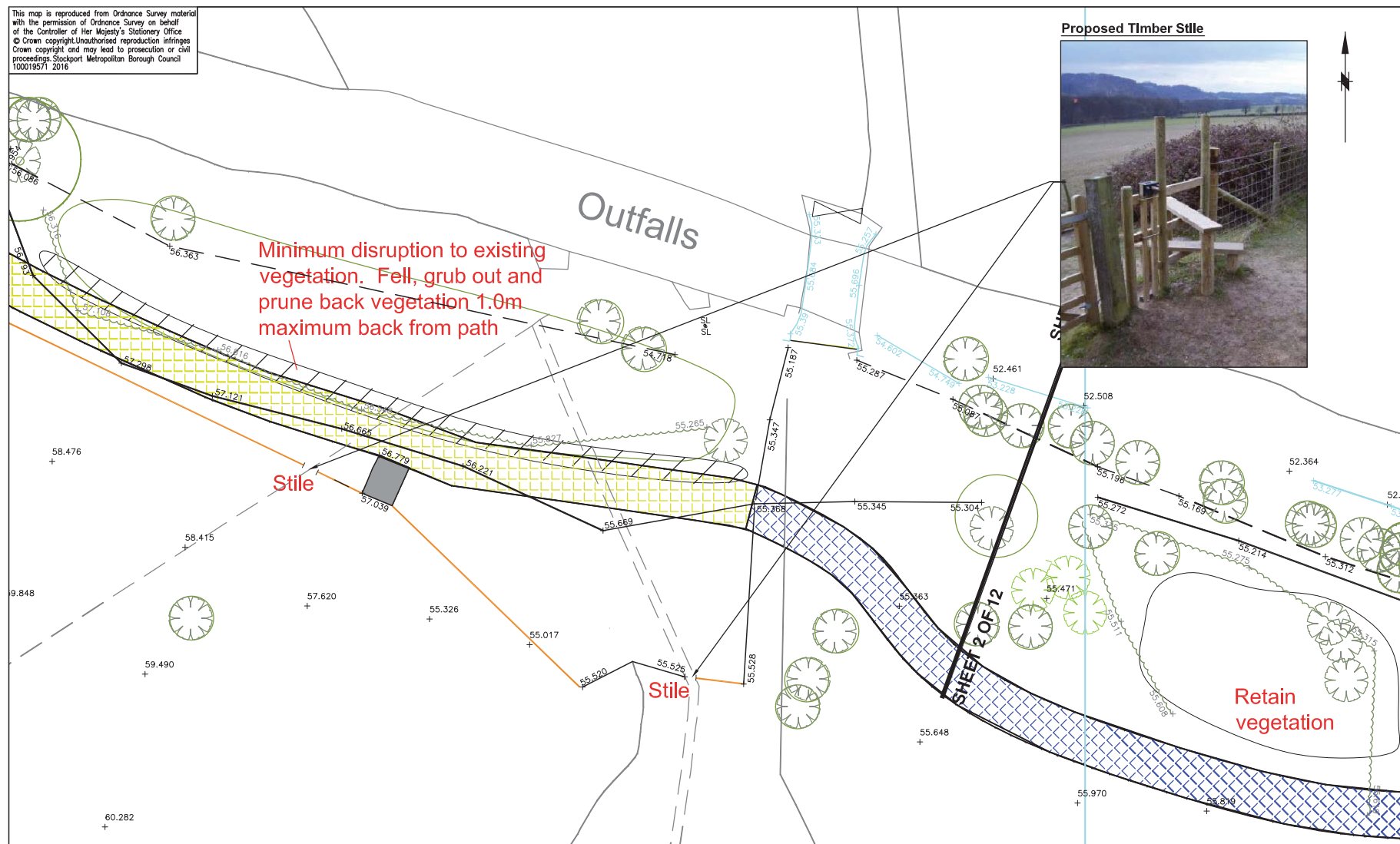
CHEADLE HULME CYCLE PACKAGE

DRAWING TITLE

Detail Access Arrangement - Blenheim Road

Filename			
Drawn BL	Engineer BL	Checked ALB	Approved MDJ
Date 21/03/2017	Date 21/03/2017	Date 30/03/2017	Date 30/03/2017
Scale 1:250@A3			
Drawing No. 0255_P_046			Revision

This map is reproduced from Ordnance Survey material with the permission of Ordnance Survey on behalf of the Controller of Her Majesty's Stationary Office © Crown copyright. Unauthorised reproduction infringes Crown copyright and may lead to prosecution or civil proceedings. Stockport Metropolitan Borough Council 100019571 2016



SCG JOB No.



STOCKPORT
METROPOLITAN BOROUGH COUNCIL

STOPFORD HOUSE
STOCKPORT SK1 3XE
Tel : 0161 474 4424

CAROLINE SIMPSON
CORPORATE DIRECTOR
PLACE

AMENDMENTS

DRAWN	CHECKED	DATE	No	AMENDMENT

JOB TITLE

CHEADLE HULME CYCLE PACKAGE

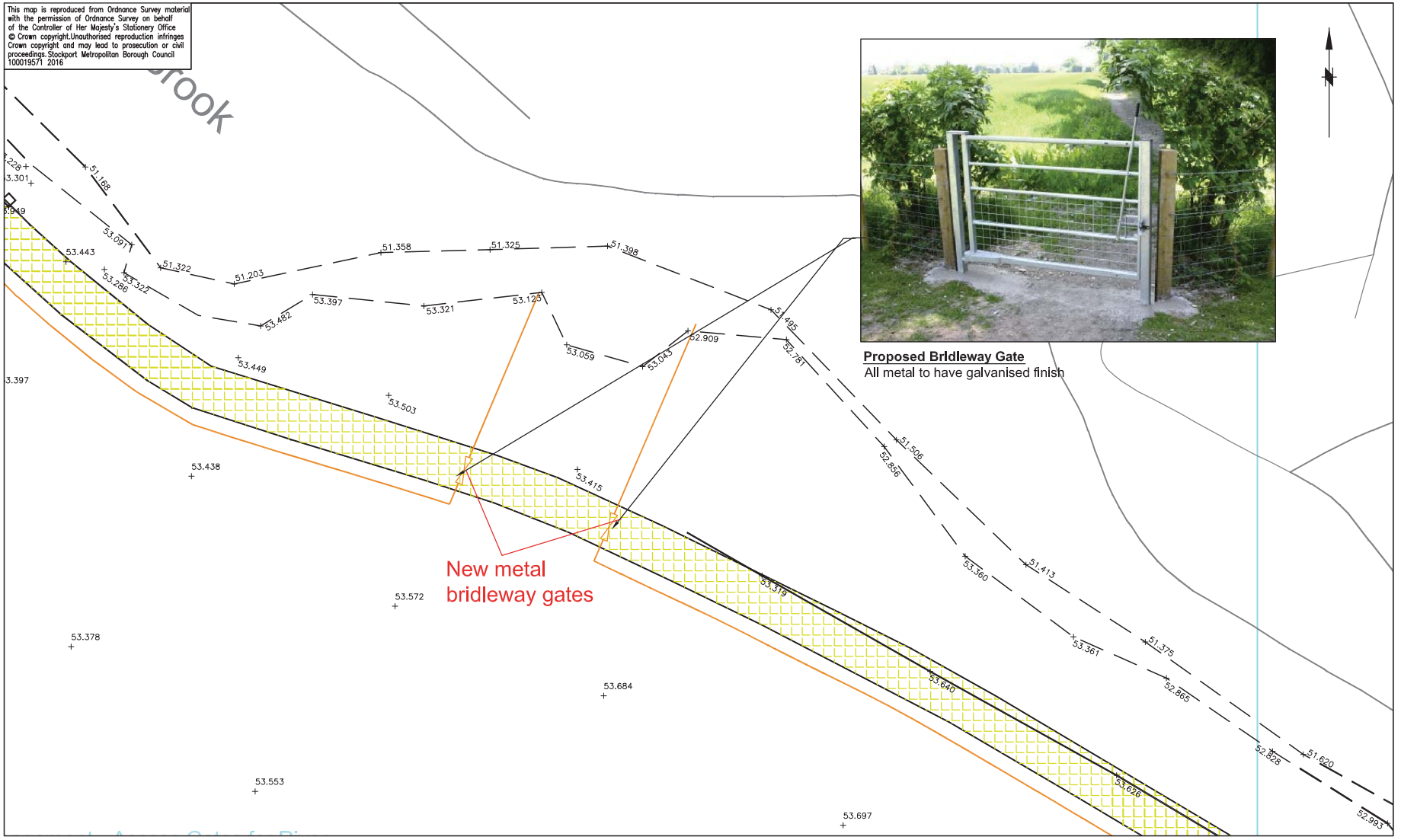
DRAWING TITLE

Detail Access Arrangement - Below Ramillies Avenue

Filename

Drawn BL	Engineer BL	Checked ALB	Approved MDJ
Date 21/03/2017	Date 21/03/2017	Date 30/03/2017	Date 30/03/2017
Scale 1:250@A3			
Drawing No. 0255_P_047			Revision

This map is reproduced from Ordnance Survey material with the permission of Ordnance Survey on behalf of the Controller of Her Majesty's Stationary Office
 © Crown copyright. Unauthorised reproduction infringes Crown copyright and may lead to prosecution or civil proceedings. Stockport Metropolitan Borough Council 100019571 2016



Proposed Bridleway Gate
 All metal to have galvanised finish

**New metal
 brideway gates**

SCG JOB No.



STOCKPORT
 METROPOLITAN BOROUGH COUNCIL

STOPFORD HOUSE
 STOCKPORT SK1 3XE
 Tel : 0161 474 4424

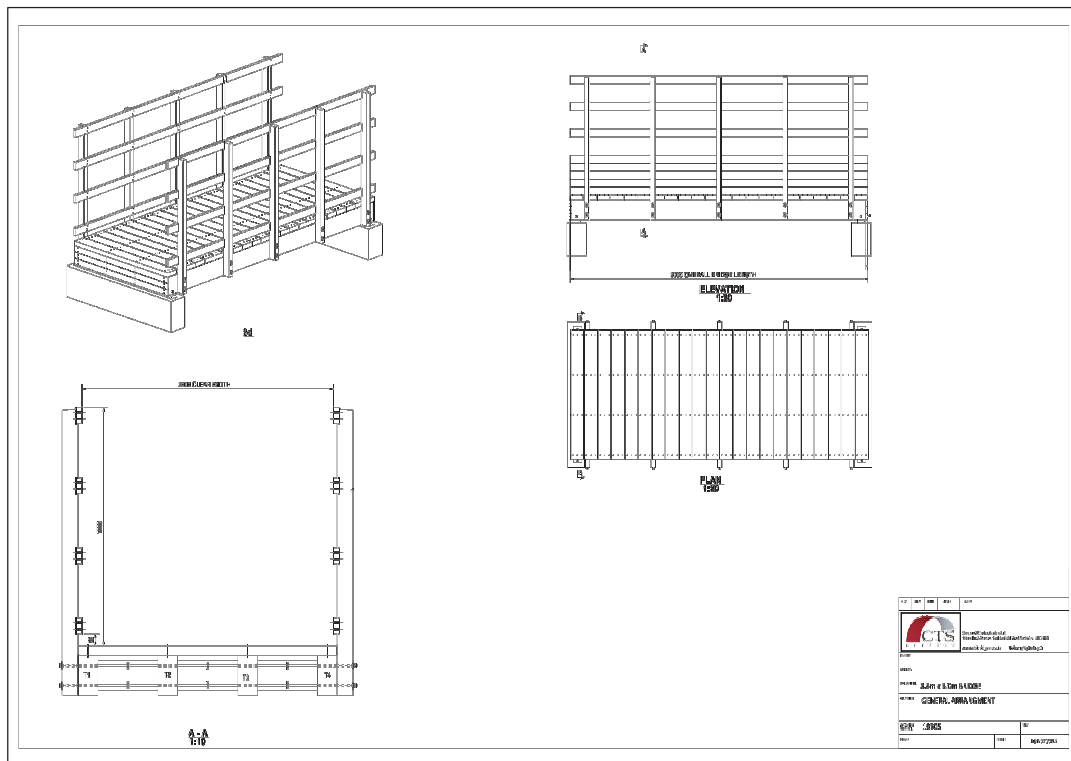
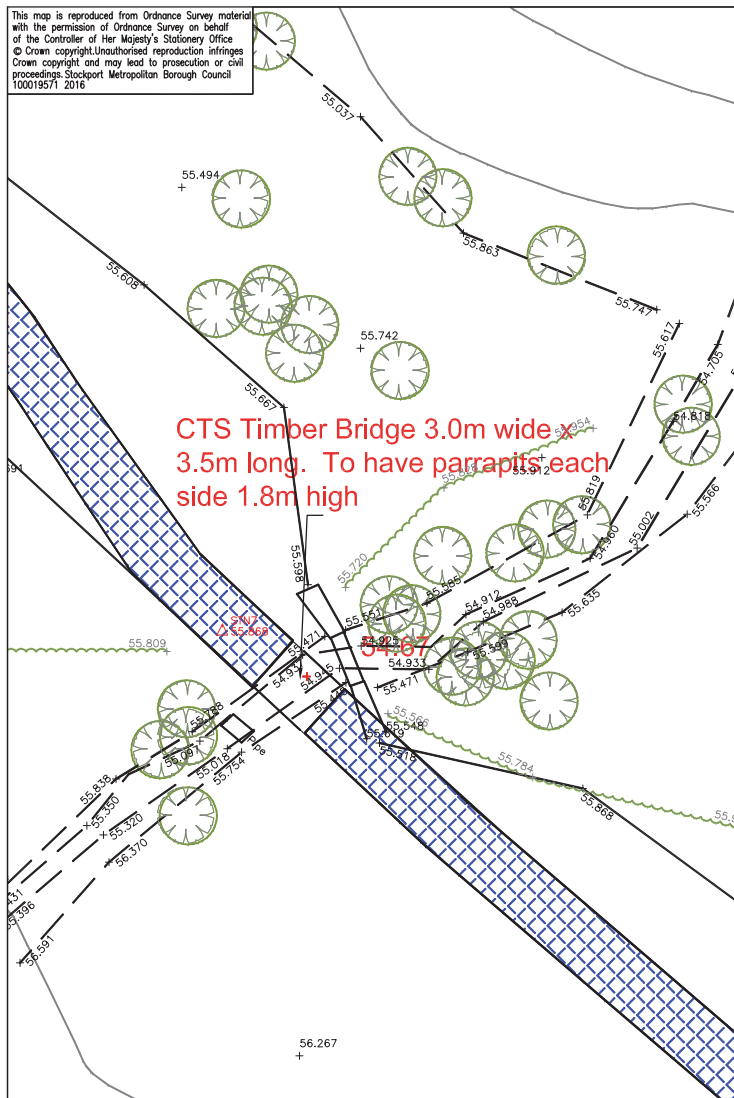
CAROLINE SIMPSON
 CORPORATE DIRECTOR
 PLACE

AMENDMENTS				
DRAWN	CHECKED	DATE	No	AMENDMENT

JOB TITLE
CHEADLE HULME CYCLE PACKAGE
DRAWING TITLE
Detail Access Arrangement - Access Gates to River

Filename			
Drawn	Engineer	Checked	Approved
BL	BL	ALB	MDJ
Date	Date	Date	Date
21/03/2017	21/03/2017	30/03/2017	30/03/2017
Scale			
1:250@A3			
Drawing No.			Revision
0255_P_048			

This map is reproduced from Ordnance Survey material with the permission of Ordnance Survey on behalf of the Controller of Her Majesty's Stationery Office. © Crown copyright. Unauthorised reproduction infringes Crown copyright and may lead to prosecution or civil proceedings. Stockport Metropolitan Borough Council 100019571 2016



SCG JOB No.



STOCKPORT
METROPOLITAN BOROUGH COUNCIL

CAROLINE SIMPSON
CORPORATE DIRECTOR
PLACE

STOPFORD HOUSE
STOCKPORT SK1 3XE
Tel : 0161 474 4424

AMENDMENTS

DRAWN	CHECKED	DATE	No	AMENDMENT

JOB TITLE

CHEADLE HULME CYCLE PACKAGE

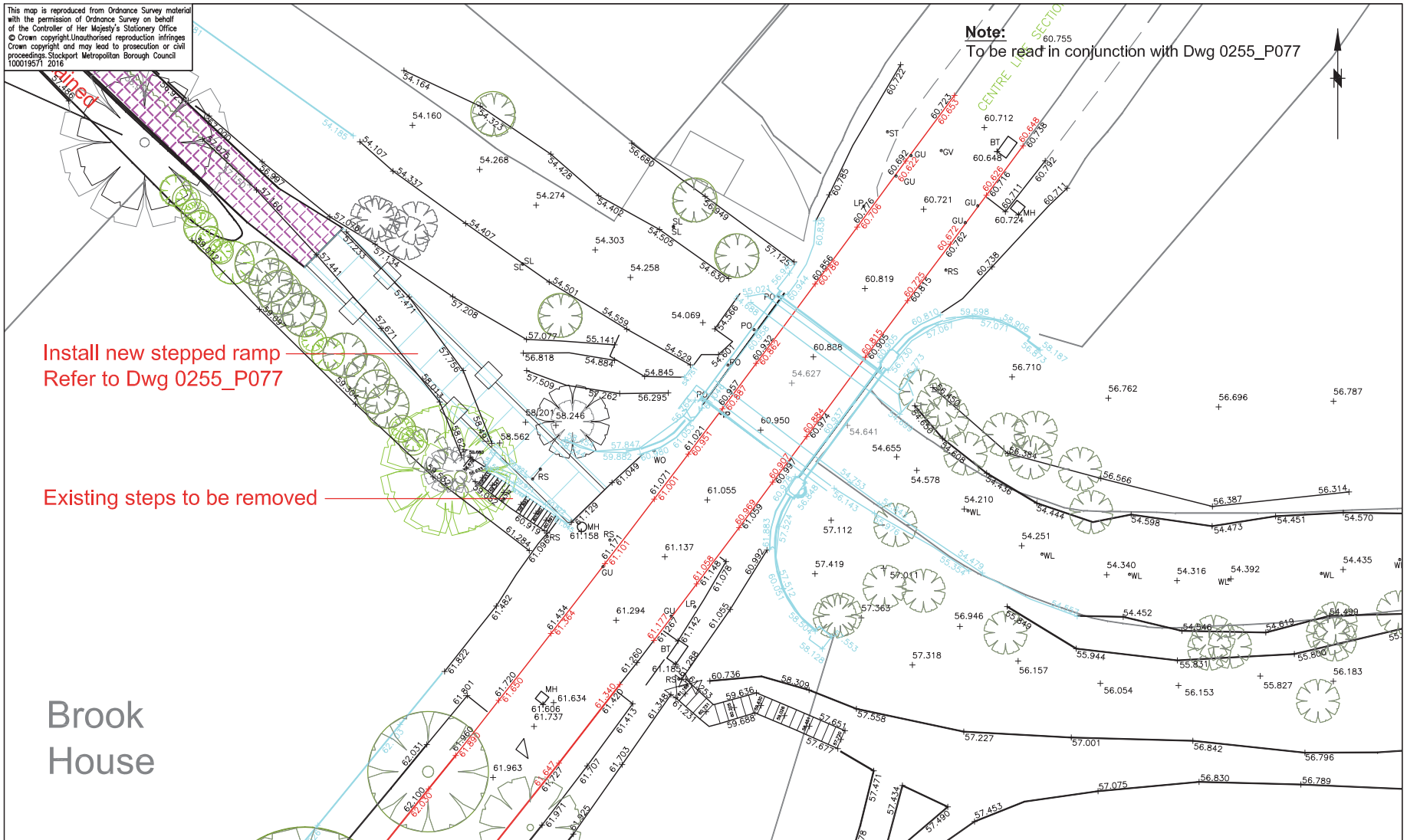
DRAWING TITLE

Detail Access Arrangement - Brook Crossing Detail

Filename

Drawn BL	Engineer BL	Checked ALB	Approved MDJ
Date 21/03/2017	Date 21/03/2017	Date 30/03/2017	Date 30/03/2017
Scale 1:250@A3			
Drawing No. 0255_P_049			Revision

This map is reproduced from Ordnance Survey material with the permission of Ordnance Survey on behalf of the Controller of Her Majesty's Stationary Office. © Crown copyright. Unauthorised reproduction infringes Crown copyright and may lead to prosecution or civil proceedings. Stockport Metropolitan Borough Council 100019571 2016



SCG JOB No.



STOCKPORT
METROPOLITAN BOROUGH COUNCIL

STOPFORD HOUSE
STOCKPORT SK1 3XE
Tel : 0161 474 4424

CAROLINE SIMPSON
CORPORATE DIRECTOR
PLACE

AMENDMENTS

DRAWN	CHECKED	DATE	No	AMENDMENT

JOB TITLE

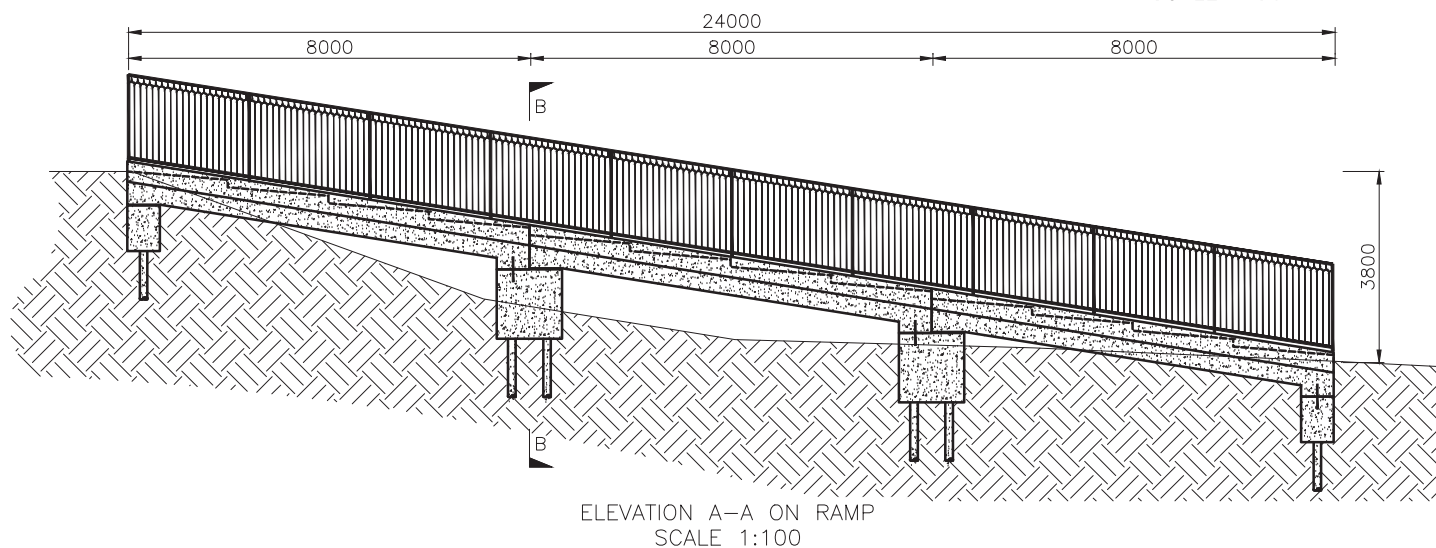
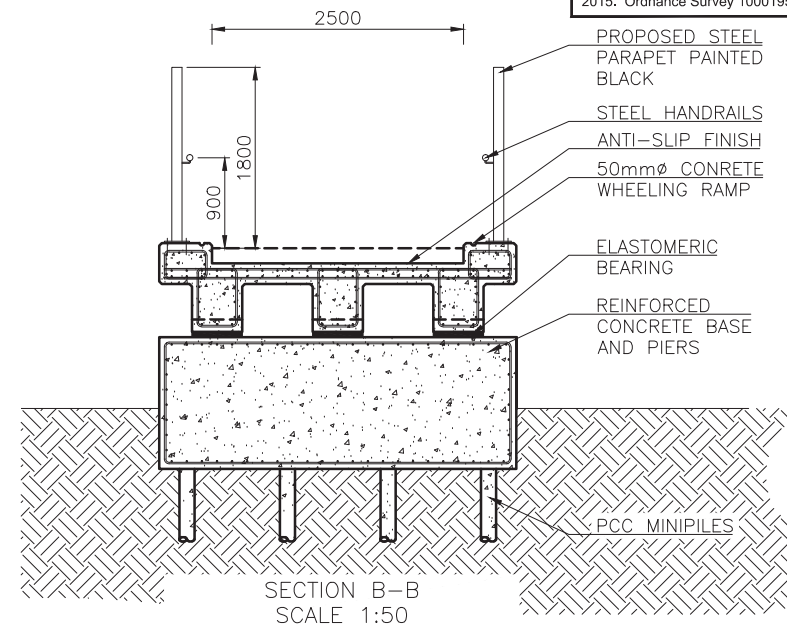
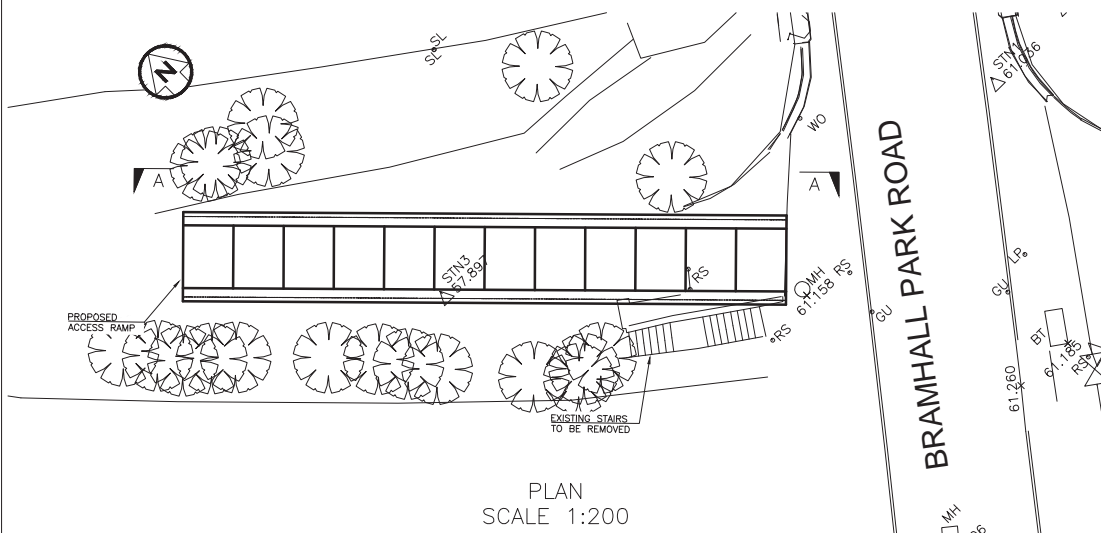
CHEADLE HULME CYCLE PACKAGE

DRAWING TITLE

Detail Access Arrangement - Bramhall Park Road

Filename

Drawn BL	Engineer BL	Checked ALB	Approved MDJ
Date 21/03/2017	Date 21/03/2017	Date 30/03/2017	Date 30/03/2017
Scale 1:250@A3			
Drawing No. 0255_P_051			Revision



STOCKPORT
METROPOLITAN BOROUGH COUNCIL

STOPFORD HOUSE
STOCKPORT SK1 3XE

PAUL LAWRENCE
CORPORATE DIRECTOR
PLACE

AMENDMENTS

DRAWN	CHECKED	DATE	No	AMENDMENT

JOB TITLE

CHEADLE HULME CYCLE PACKAGE

DRAWING TITLE

BRAMHALL PARK ROAD STEPPED RAMP

Filename

Drawn SC	Engineer SC	Checked AS	Approved MJ
Date MAR17	Date MAR17	Date MAR17	Date MAR17
Scale AS SHOWN@A3			
Drawing No. 0255_P077			Revision